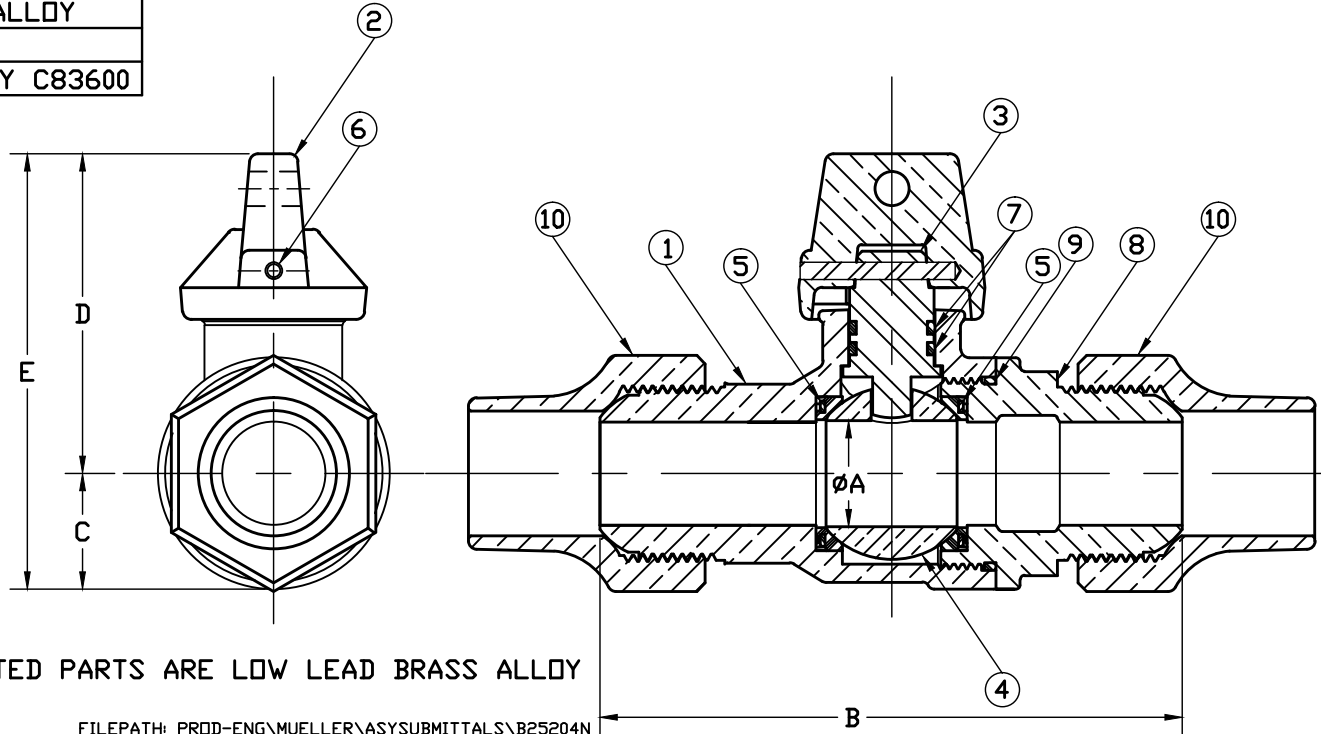


No.	DESCRIPTION	MATERIAL DESCRIPTION
1	BODY	CAST LOW LEAD BRASS ALLOY
2	CAP	CAST BRASS ASTM B62 ALLOY C83600
3	STEM	LOW LEAD BRASS ALLOY
4	BALL	LOW LEAD BRASS ALLOY
5	GASKET	ASTM D2000 (NITRILE)
6	SOLID PIN	AISI 303 STAINLESS STEEL
7	O-RING	ASTM D2000 (EP)
8	END PIECE	CAST LOW LEAD BRASS ALLOY
9	O-RING	ASTM D2000 (EP)
10	TUBE NUT	CAST BRASS ASTM B62 ALLOY C83600

SIZE	ØA	B	C	D	E
3/4"R	.63	4.06	.75	2.12	2.87
3/4"	.75	4.22	.84	2.32	3.16
1"R	.75	4.78	.84	2.32	3.16
1"	1.00	5.53	1.15	2.57	3.72
1 1/2"	1.50	6.97	1.50	3.37	4.87
2"	2.00	8.71	1.82	3.92	5.74



NOTE: ALL WETTED PARTS ARE LOW LEAD BRASS ALLOY

FILEPATH: PROD-ENG\MUELLER\ASYSUBMITTALS\B25204N

PART NUMBER
B25204N
44E-MRKTG

DRFTR	JGarvin	6/14/10	Mueller Co.		
CHKR					
ENGR					
MGR					
			UNLESS OTHERWISE NOTED	THIRD ANGLE PROJECTION	
			SURFACE PREPARATION:	REF. No. SCALE	
			BREAK CORNER(S) ---- .000		
			SURFACE FINISH --XXX RMS	FULL	
			TOLERANCE(S):		
			LINEAR ----- ± .000		
			ANGULAR ----- ± 0°00'		
			BY DATE		
			STK No:		
			MAT'L:		
			DESCR.		
			INLINE BALL CURB VALVE	PART NUMBER	
			LOW LEAD BRASS(CS x CS)	B25204N	
REV	ECR	DESCRIPTION	DATE	BY	CHKR
PER EST NO: X-XXXX EST FIN WT = 0.0000 lbs					