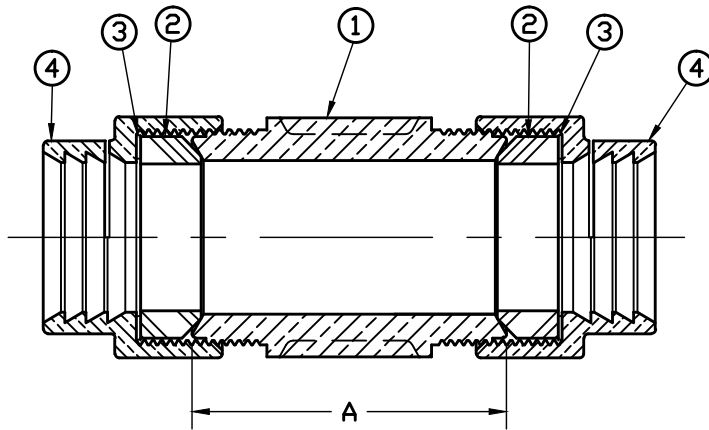


| No. | QTY. | DESCRIPTION | MATERIAL |
|-----|------|--------------|----------------------------------|
| 1 | 1 | SPUD | CAST LOW LEAD BRASS ALLOY |
| 2 | 2 | GASKET | NITRILE ASTM D2000 |
| 3 | 2 | WASHER | POLYPROPYLENE |
| 4 | 2 | COUPLING NUT | CAST BRASS ASTM B62 ALLOY C83600 |



| SIZE | A |
|---------|------|
| 3/4 | 2.28 |
| 1 | 2.64 |
| 1 x 3/4 | 2.15 |
| 1 1/4 | 3.38 |
| 1 1/2 | 3.35 |
| 2 | 2.95 |

NOTE: ALL WETTED PARTS ARE LOW LEAD BRASS ALLOY

FILEPATH: PROD-ENG\MUELLER\ASYSUBMITTALS\E15404N

| | | | | | | | | | | | | |
|---|-----|-------------|------|----|------|---|-----|----------|--------------------|--|----------|------------------------|
| | | | | | | DRFTR | RWB | 12/21/09 | Mueller Co. | UNLESS OTHERWISE NOTED THIRD ANGLE PROJECTION SURFACE PREPARATION: BREAK CORNER(S) ---- .000 SURFACE FINISH -- XX RMS TOLERANCE(S): LINEAR ----- ± .000 ANGULAR ----- ± 0°00' | REF. No. | SCALE NONE |
| | | | | | | CHKR | | | | | | |
| | | | | | | ENGR | | | | | | |
| | | | | | | MGR | | | | | | |
| | | | | | | | BY | DATE | | | | |
| | | | | | | | | STK No: | | | | |
| | | | | | | | | MAT'L: | | | | |
| REV | ECR | DESCRIPTION | DATE | BY | CHKR | DESCR. STRAIGHT SERVICE FITTING LOW LEAD BRASS (IPS PJ x IPS PJ) | | | | | | PART NUMBER E15404N |
| PER EST NO: DXXXX EST FIN WT = 0.0000 lbs | | | | | | | | | | | | |

PART NUMBER
E15404N
442-MRKTNG