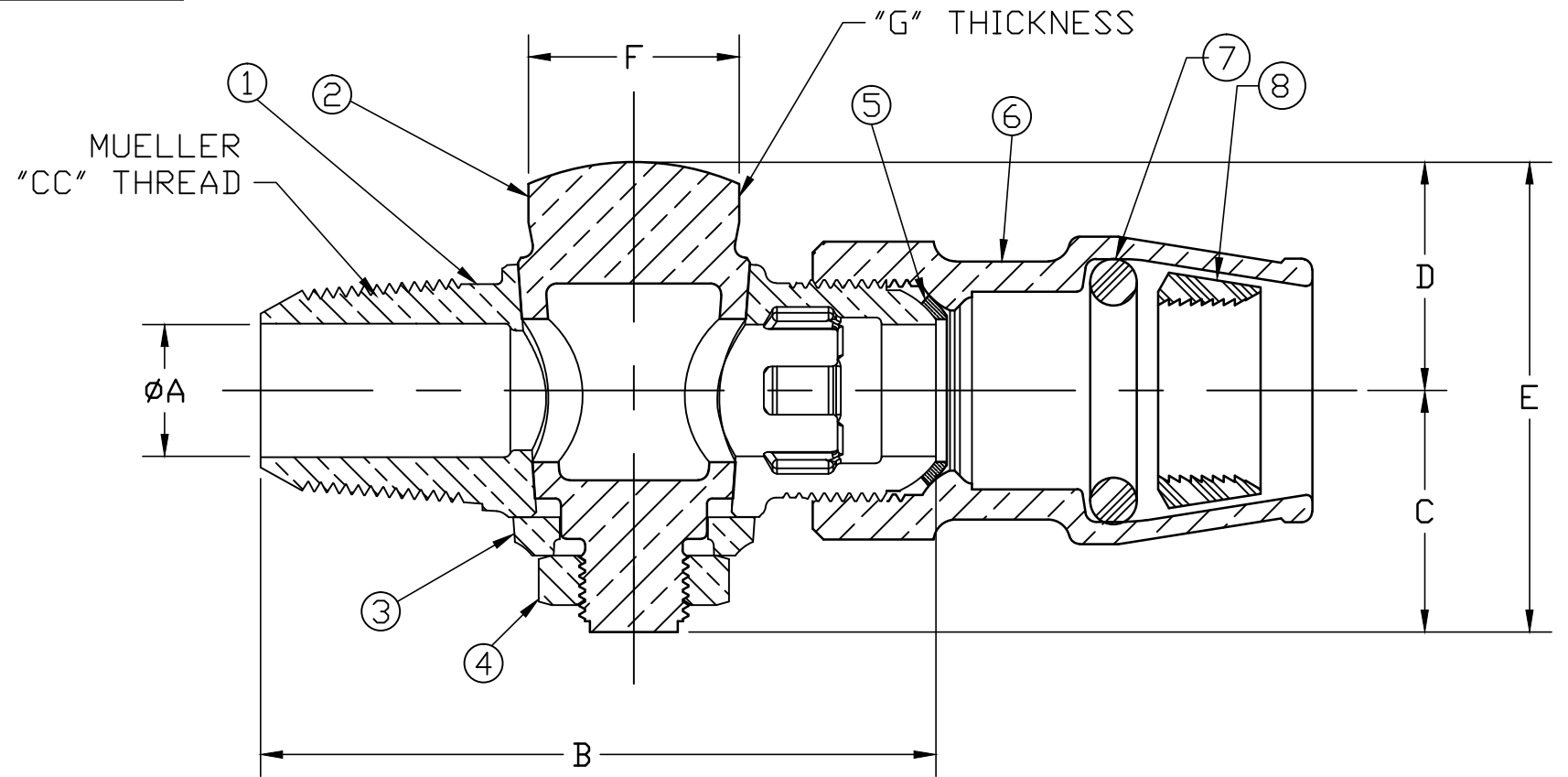


No.	DESCRIPTION	MATERIAL
1	BODY	CAST LOW LEAD BRASS ALLOY
2	KEY	CAST LOW LEAD BRASS ALLOY
3	KEY WASHER	CAST BRASS ASTM B62 ALLOY C83600
4	KEY NUT	CAST BRASS ASTM B62 ALLOY C83600
5	COPPER GASKET	COPPER SHEET ASTM B152 UNS C11000
6	INSTA-TITE BODY	CAST LOW LEAD BRASS ALLOY
7	O-RING	EP ASTM D2000
8	GRIP RING	CELCON M90 NATURAL CF2001

SIZE	ØA	B	C	D	E	F	G
3/4	.75	3.84	1.38	1.30	2.68	1.20	.38
3/4 x 1	.75	4.25	1.38	1.30	2.68	1.20	.38
1	.92	4.52	1.46	1.41	2.87	1.48	.38



NOTE: ALL WETTED PARTS ARE LOW LEAD BRASS ALLOY

FILEPATH: PROD-ENG\MUELLER\ASYSUBMITTALS\H15005N

						DRFTR	RWB	1/15/13			UNLESS OTHERWISE NOTED SURFACE PREPARATION: BREAK CORNER(S) ---- .000 SURFACE FINISH -- XX RMS TOLERANCE(S): LINEAR ----- ± .000 ANGULAR ----- ± 0°00'		THIRD ANGLE PROJECTION  REF. No.    SCALE FULL	
					CHKR									
					ENGR									
					MGR									
							BY	DATE	STK No:					
							MAT'L:		DESCR.		CORPORATION STOP LLB (CC THR'D x INSTA-TITE)			
											DWG NUMBER H15005N			
TITLE TO AND OWNERSHIP OF THIS ENGINEERING DATA REMAINS IN Mueller Co. NO USE IS TO BE MADE OF THIS DATA EXCEPT AS SPECIFICALLY AUTHORIZED BY Mueller Co. ASSENT ON THE PART OF THE RECIPIENT TO THESE CONDITIONS IS PRESUMED										PER EST NO: DXXXX EST FIN WT = 0.0000 lbs				

DWG NUMBER  
H15005N  
442-MRKTG