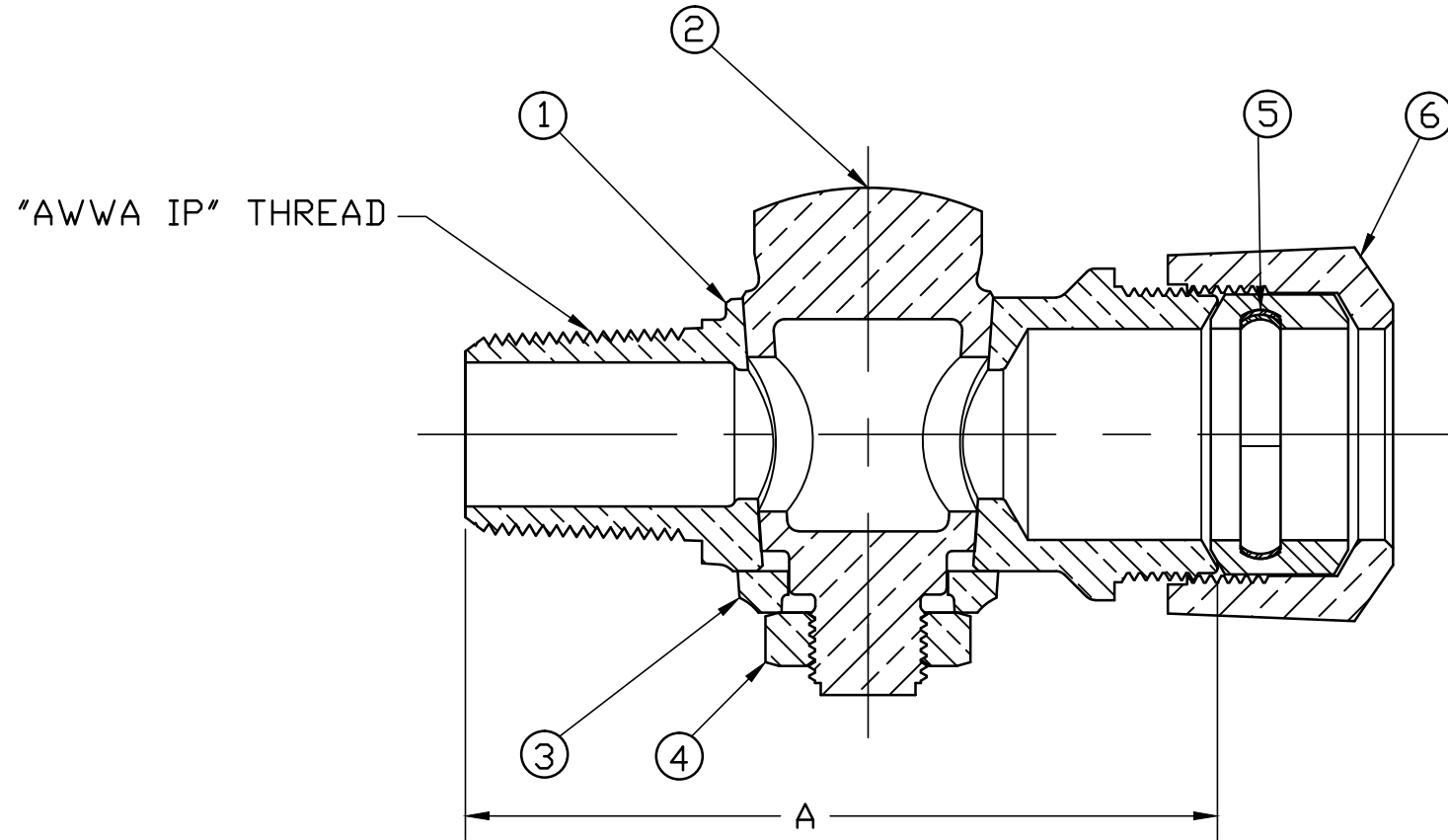


No.	DESCRIPTION	MATERIAL
1	BODY	CAST LOW LEAD BRASS ALLOY
2	KEY	CAST LOW LEAD BRASS ALLOY
3	KEY WASHER	CAST BRASS ASTM B62 ALLOY C83600
4	KEY NUT	CAST BRASS ASTM B62 ALLOY C83600
5	IPS PE GSKT	ASTM D2000(SBR)&410 STAINLESS STEEL
6	CONN NUT	CAST BRASS ASTM B62 ALLOY C83600



VALVE SIZE	A
3/4"	3.97
1"	5.98

ALL WETTED PARTS ARE LOW LEAD BRASS ALLOY

FILEPATH: PROD-ENG\MUELLER\ASYSUBMITTALS\H15029N

						DRFTR	RWB	5/2/13	Mueller Co.	UNLESS OTHERWISE NOTED THIRD ANGLE PROJECTION SURFACE PREPARATION: BREAK CORNER(S) ---- .000 SURFACE FINISH -- XX RMS TOLERANCE(S): LINEAR ----- ± .000 ANGULAR ----- ± 0°00'	REF. No.	SCALE
						CHKR						
						ENGR						
						MGR						
									BY	DATE		
									STK No:			
									MAT'L:			
									DESCR.	GROUND KEY CORPORATION LLB VALVE (AWWA IP x 110IPS)		DWG NUMBER H15029N
REV	ECR	DESCRIPTION	DATE	BY	CHKR							

DWG NUMBER
H15029N
442-MRKTG

TITLE TO AND OWNERSHIP OF THIS ENGINEERING
DATA REMAINS IN Mueller Co. NO USE IS TO BE
MADE OF THIS DATA EXCEPT AS SPECIFICALLY
AUTHORIZED BY Mueller Co. ASSENT ON THE PART
OF THE RECIPIENT TO THESE CONDITIONS IS PRESUMED