

COVER BOLTS/NUTS		
TYPE	MATERIAL	
STANDARD	STEEL/ZINC	✓
S1	304 STN. STEEL	
S3	316 STN. STEEL	

Marking

18  
CCNE  
150 PSI  
AWWA C508  
CI

200  
CI  
SERIES 8000

Remark - Flanged dimensions follow ANSI B16.1 CL. 125

NO.	PARTS	MATERIAL	ASTM DESIGNATION	Q'TY
462	Retaining Plug	Brass	B 21	1
414	Arm B	Zinc Coated Steel	A 36	1set
351	O-Ring	Rubber (Buna N)	D 2000 BK 707	2
329	Cover O-Ring	Rubber (Buna N)	D 2000 BK 807	1
327	Gasket	Rubber (Buna N)	D 2000 BK 807	2
324	Cover Gasket	Rubber (Buna N)	D 2000 BK 807	1
262	Disc Bolt	Stainless Steel	A 276 Type 304	1
194	Cover Bolt & Nut	SEE COVER BOLT TABLE		1set
172	Spring	Zinc Coated Steel	A 36	1
166	Plug $\phi 1/2"$	Stainless Steel	A 276 Type 304	1
161	Key	Stainless Steel	A 276 Type 304	1
159	Hinge Pin	Stainless Steel	A 276 Type 304	1
155	Weight Arm	Ductile Iron	A 536 Gr. 65-45-12	1
153	Bolt	Zinc Coated Steel	A 307 Grade B	2
088	Seat Nut	Brass	B 21	1
062	Disc Seat Ring	Rubber (Buna N)	d 2000 BK 807	1
061	Body Seat Ring	Bronze	B 62	1
023	Arm	Ductile Iron	A 536 Gr. 65-45-12	1
020	Sleeve	Stainless Steel	A 276 Type 304	1
014	Cover	Cast Iron	A 126 Class B	1
003	Disc	Cast Iron	A 126 Class B	1
001	Body	Cast Iron	A 126 Class B	1

MATERIAL LIST			
HYDRO SHELL		300	PSI.
HYDRO VALVE SEAT		150	PSI.
HYDRO BACK SEAT		—	PSI.
AIR SEAT		—	PSI.
STEAM		—	PSI.

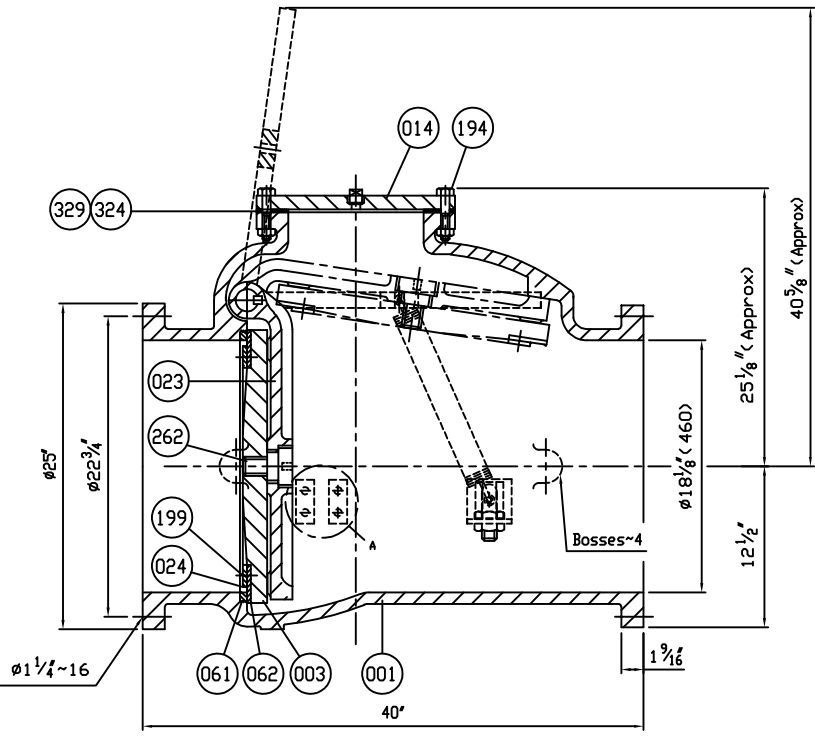
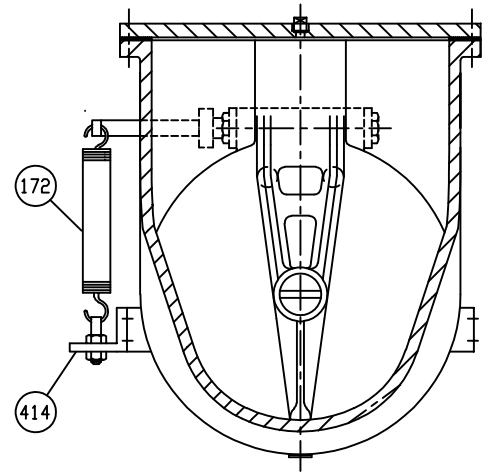
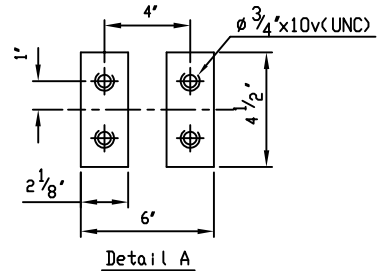
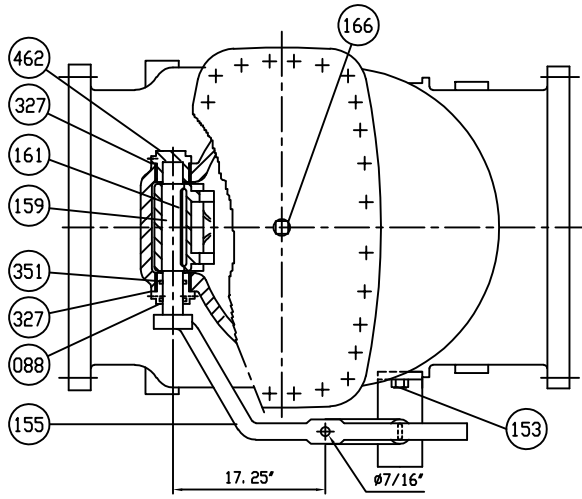
TEST PRESSURE			
WORKING PRESSURE		150	PSI.



SCALE	DR. ALEX ADAMS	DATE 08/21/12	REF. DWG.
N.T.S.	CHK. JON COLPANA	APP. JACKSON	USA1258C

TITLE  
SIZE 18" SWING CHECK VALVE AWWA C508  
BRONZE BODY SEAT RING & BUNA N DISC SEAT RING  
WITH ONE LEVER AND SPRING

TYPE:	8001AB1LS	DWG NO.	M80042	REV.	3
-------	-----------	---------	--------	------	---



DS01 ISSUED : 240640 REVISED:-