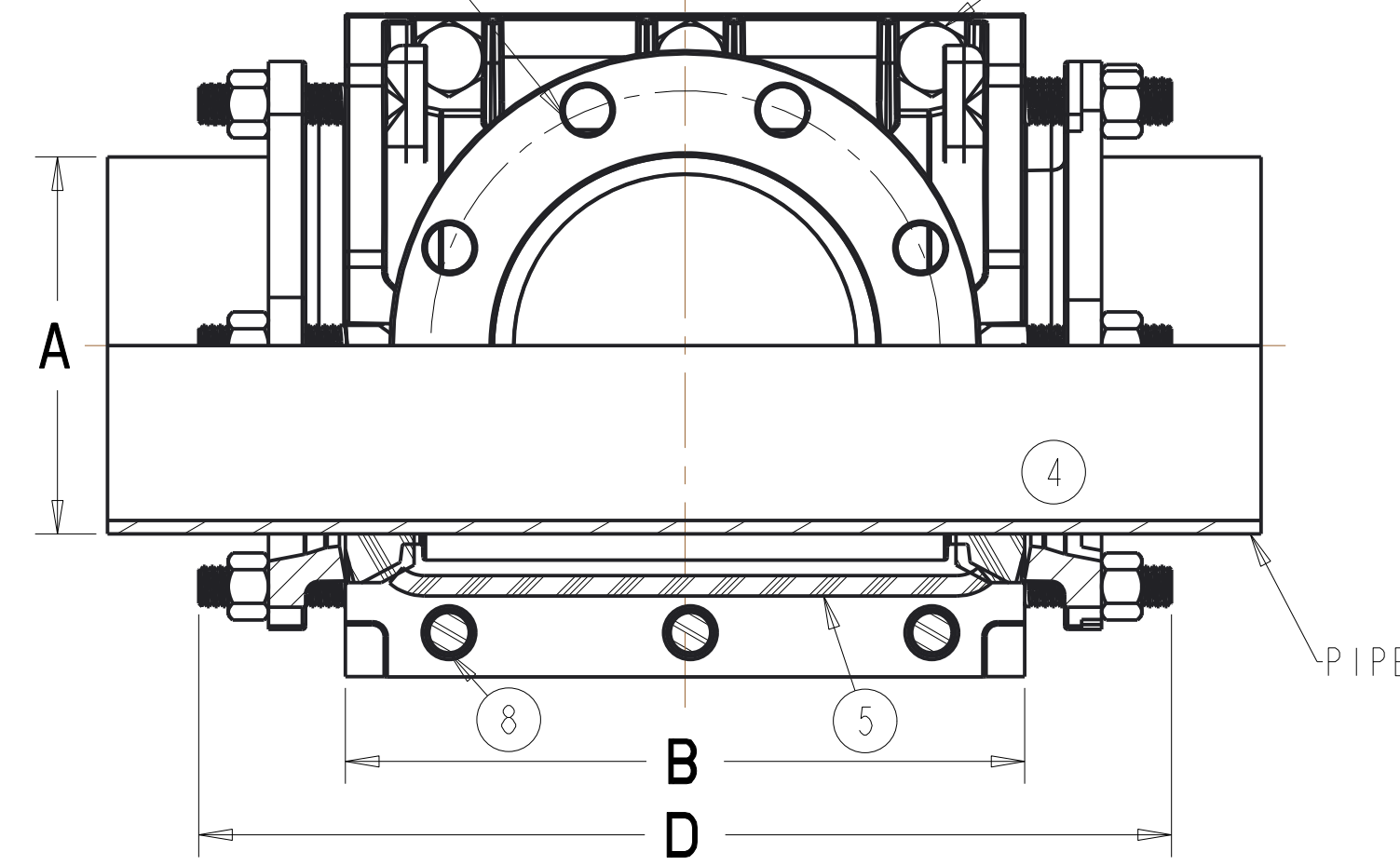


SIZE	A (H-619) O.D. RANGE	B	C	D REF	E	F	G	H	J	K	L	M	N	P	S
4x4	4.97 - 5.57	10.94	9.875	16.51	9.00	5.032	7.000	4.25	.250	.655	8 - .750	8.25	8 - .750	6 - .750	7.50
6x4	7.05 - 7.60	12.66	12.250	18.17	9.00	5.035	8.000	5.96	.250	.715	8 - .750	10.38	12 - .750	6 - .750	7.50
6x6					11.00	7.060			.313						8 - .875
8x4	9.22 - 9.79	11.97	14.375	18.36	9.00	5.065	8.825	7.19	.250	.685	8 - .750	12.75	12 - .750	6 - .750	7.50
8x6		11.97		18.36	11.00	7.065	9.342		.313	.765	8 - .875			9.50	
8x8		14.86		21.25	13.50	9.080	9.539		.313	.775	8 - .875			11.75	
10x4	11.77 - 12.25	13.50	17.188	19.13	9.00	5.016	11.125	8.33	.250	.938	8 - .750	15.44	16 - .750	8 - .875	7.50
10x6		13.50		19.13	11.00	7.016	11.000		.313	1.000	8 - .875			9.50	
10x8		18.63		24.25	13.50	9.016	11.000		.313	1.125	8 - .875			11.75	
10x10		18.63		24.25	16.00	11.016	11.000		.313	1.188	8 - 1.000			14.25	
12x4	14.03 - 14.51	13.50	19.688	19.00	9.00	5.016	12.00	9.44	.250	.938	8 - .750	17.81	16 - .750	8 - .875	7.50
12x6		13.50		19.00	11.00	7.016			.313	1.000	8 - .875			9.50	
12x8		15.50		21.00	13.50	9.016			.313	1.125	8 - .875			11.75	
12x10		21.75		27.25	16.00	11.016			.313	1.188	12 - 1.000			14.25	
12x12		21.75		27.25	19.00	13.016			.313	1.250	12 - 1.000		16 - .750	14 - .875	17.00

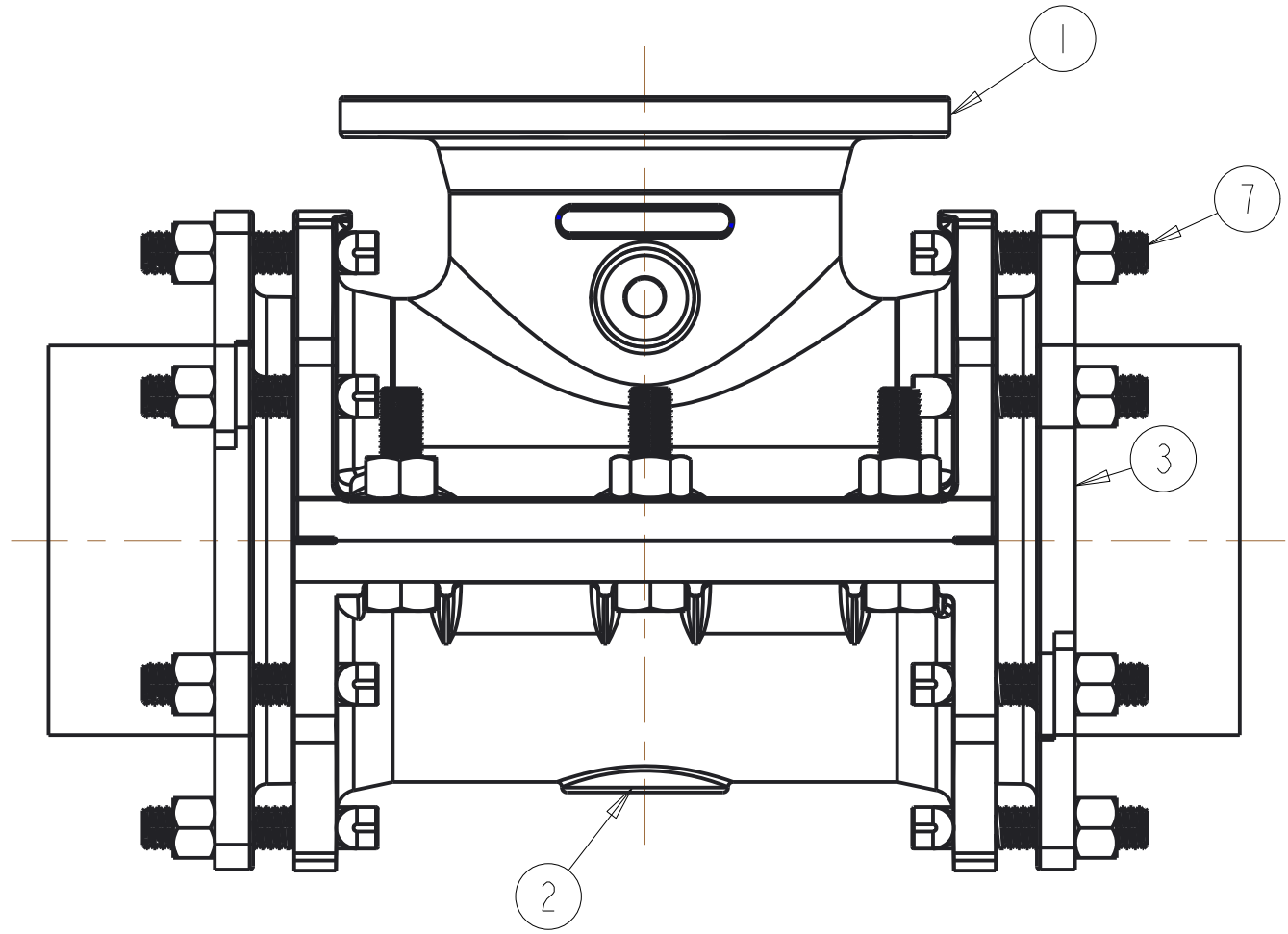
"L" NO. & SIZE OF HOLES ON "S" B.C. STRADDLE

"P" NO. & SIZE OF BOLTS

"N" NO. & SIZE OF BOLTS INCLUDING BOTH ENDS



SECTION A-A



PARTS LIST					
ITEM	DESCRIPTION	REQ'D	MATERIAL	ASTM	NOTES
1	OUTLET	1	DUCTILE IRON	A536 65-45-12	
2	CAP	1	DUCTILE IRON	A536 65-45-12	
3	PIPE GLAND	2	CAST IRON	A126 CLASS B	
4	MJ GASKET	2	EPDM		MUELLER RUBBER SPEC R42
5	SIDE GASKET	2	EPDM		MUELLER RUBBER SPEC R46
6	PIPE PLUG	1	CAST IRON		
7	PIPE GLAND BOLTS & NUT	"N"	588 OR A242	GRADE B OR TYPE I	
8	SQUARE SIDE BOLT NUTS	"P"	STEEL ZINC PLATED	GRADE B	SC3

6806 4"-12" H619 MECH JOINT TAPPING SLEEVE ASSEMBLY FOR A-C PIPE

APPROVED
By Jason W. Bradley at 2:03 pm, Jun 02, 2009

DR BY: CCH	5/29/09	UNLESS OTHERWISE NOTED	THIRD ANGLE PROJECTION	C.D. NO.
CHKD: BMR	6/02/09	BREAK CAST CORNERS!		PART. NO.
ENGR: JWD	6/02/09	BREAK MACH CORNERS!		
MGR:		TOLERANCES	PURCH. FINISH	ASSY
MFG:		UNLESS OTHERWISE NOTED	REF. NO.	SCALE
TOOL:		LINER	±	NONE
FBY:		ANGULAR	±	STR. NO.
MATERIAL NOTED				
DESCR. 4"-12" H619 MECH JOINT TAPPING SLEEVE ASSEMBLY FOR A-C PIPE			NUMBER 6806	