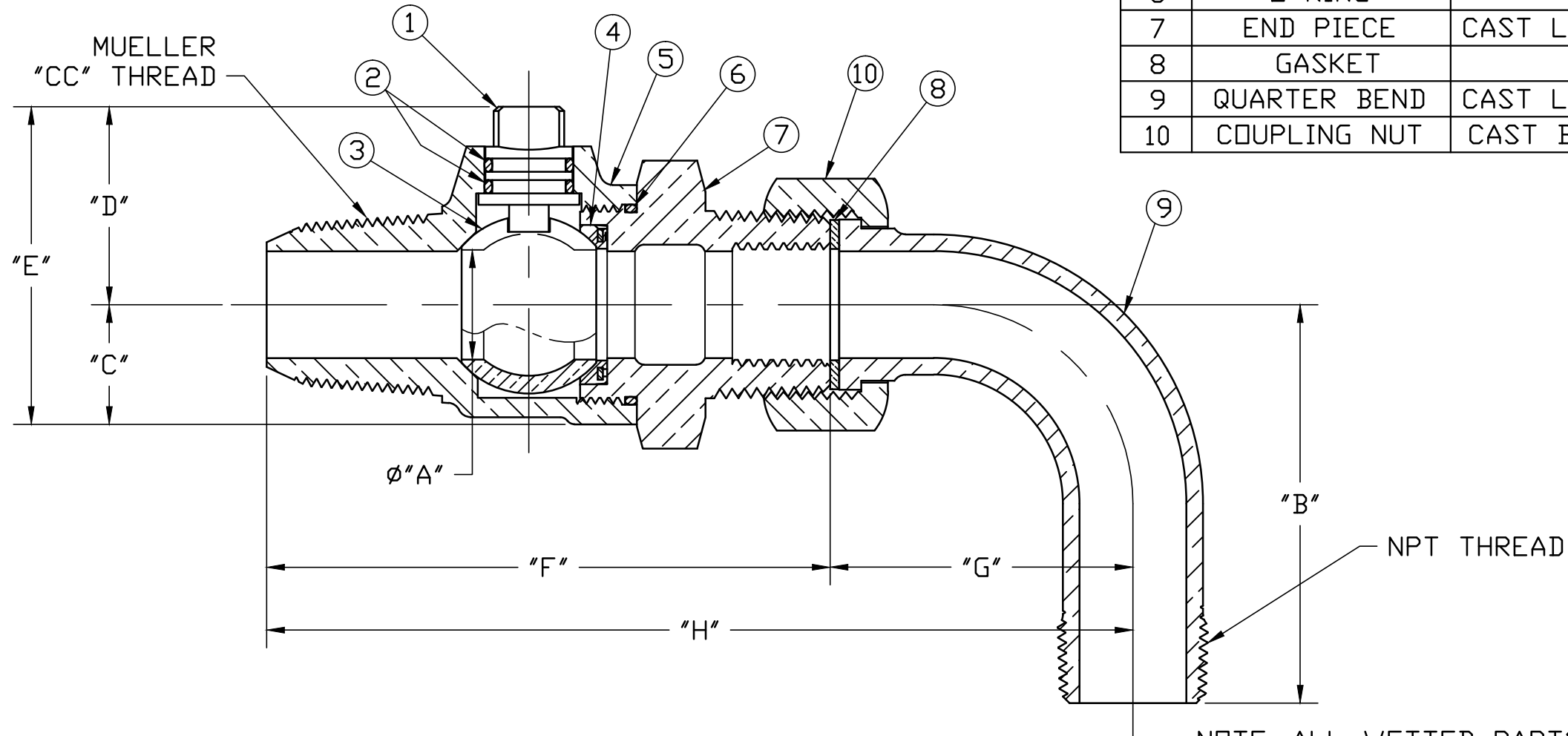


SIZE	ØA	B	C	D	E	F	G	H
3/4	.750	2.797	.840	1.390	2.203	3.955	2.124	6.079
1	1.000	2.562	1.150	1.591	2.714	4.588	2.453	7.041
1-1/2	1.500	3.812	1.500	2.235	3.735	5.395	2.906	8.301
2	2.000	4.328	1.820	2.557	4.377	6.246	3.296	9.542

No.	DESCRIPTION	MATERIAL
1	STEM	LOW LEAD BRASS ALLOY C89833
2	O-RING	EPDM D2000
3	BALL	LOW LEAD BRASS ALLOY C89833
4	GASKET - SEAL	NITRILE D2000
5	BODY	CAST LOW LEAD BRASS ALLOY C89833
6	O-RING	EPDM D2000
7	END PIECE	CAST LOW LEAD BRASS ALLOY C89833
8	GASKET	FIBER
9	QUARTER BEND	CAST LOW LEAD BRASS ALLOY C89833
10	COUPLING NUT	CAST BRASS ASTM B62 ALLOY C83600



NOTE: ALL WETTED PARTS ARE LOW LEAD BRASS ALLOY

FILEPATH: PROD-ENG\MUELLER\ASYSUBMITTALS\B2000302N

						DRFTR	RWB	2/23/16	<b>Mueller Co.</b>	UNLESS OTHERWISE NOTED SURFACE PREPARATION: BREAK CORNER(S) ---- .000 SURFACE FINISH -- XX RMS TOLERANCE(S): LINEAR ----- ± .000 ANGULAR ----- ± 0°00'	THIRD ANGLE PROJECTION	
						CHKR					REF. No.	SCALE
						ENGR						
						MGR						
							BY	DATE	STK No:			
									MAT'L:			
									DESCR.			
									LLB BALL CORPORATION 300 PSI WP VALVE W/ 90° BEND ("CC" x MIP)			
											DWG NUMBER	
											B2000302N	
									PER EST NO: DXXXX		EST FIN WT = 0.0000 lbs	

DWG NUMBER  
B2000302N  
442-MRKTG

TITLE TO AND OWNERSHIP OF THIS ENGINEERING  
DATA REMAINS IN Mueller Co. NO USE IS TO BE  
MADE OF THIS DATA EXCEPT AS SPECIFICALLY  
AUTHORIZED BY Mueller Co. ASSENT ON THE PART  
OF THE RECIPIENT TO THESE CONDITIONS IS PRESUMED