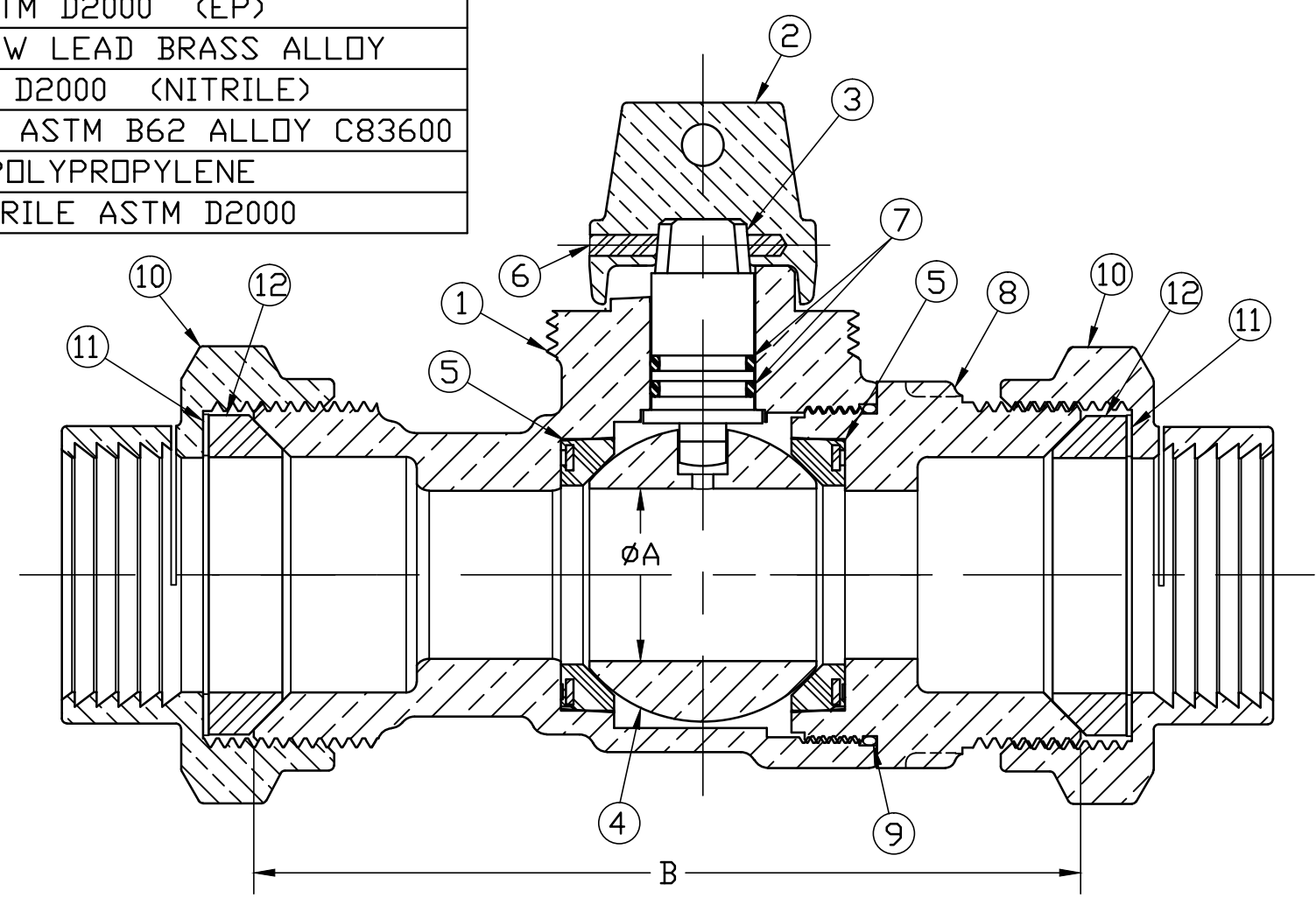
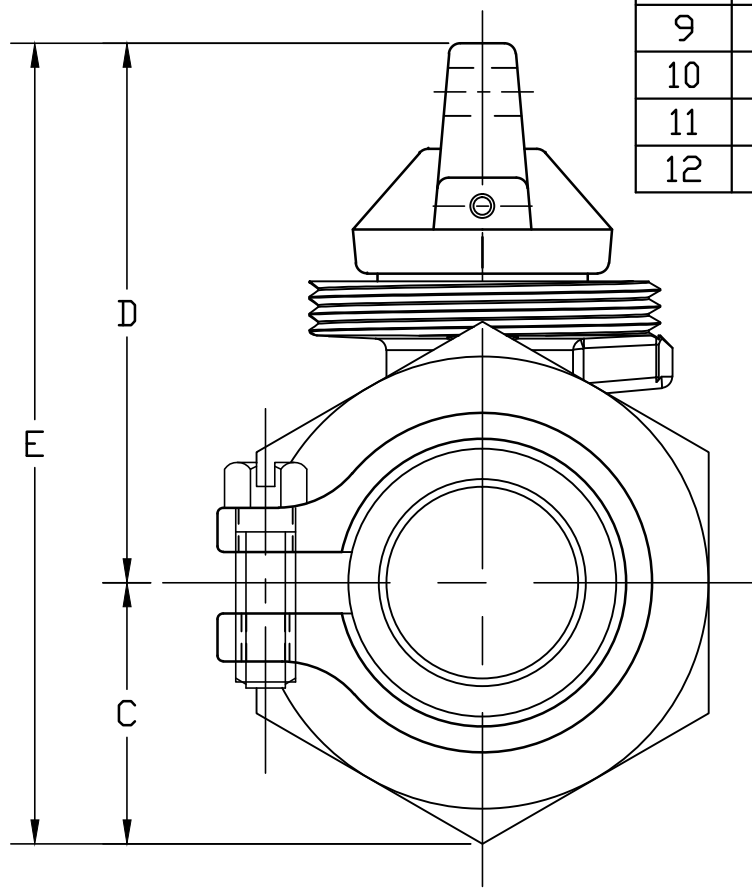


No.	DESCRIPTION	MATERIAL DESCRIPTION
1	BODY	CAST LOW LEAD BRASS ALLOY
2	CAP	CAST BRASS ASTM B62 ALLOY C83600
3	STEM	LOW LEAD BRASS ALLOY
4	BALL	LOW LEAD BRASS ALLOY
5	GASKET	ASTM D2000 (NITRILE)
6	SOLID PIN	AISI 303 STAINLESS STEEL
7	O-RING	ASTM D2000 (EP)
8	END PIECE	CAST LOW LEAD BRASS ALLOY
9	O-RING	ASTM D2000 (NITRILE)
10	COUP. NUT	CAST BRASS ASTM B62 ALLOY C83600
11	WASHER	POLYPROPYLENE
12	GASKET	NITRILE ASTM D2000



SIZE	ØA	B	C	D	E
1"	1.00	4.92	1.36	2.81	4.17
1 1/2"	1.50	5.50	1.66	3.43	5.09
2"	2.00	6.57	1.82	3.79	5.61

ALL WETTED PARTS ARE LOW LEAD BRASS ALLOY

FILEPATH: PROD-ENG\MUELLER\ASYSUBMITTALS\E25142N

DRFTR RWB 2/6/15								UNLESS OTHERWISE NOTED THIRD ANGLE PROJECTION SURFACE PREPARATION: BREAK CORNER(S) ---- .000 SURFACE FINISH ---XXX RMS TOLERANCE(S): LINEAR ----- ± .000 ANGULAR ----- ± 0°00'	
CHKR									
ENGR						BY		DATE	
MGR						STK No:			
MAT'L:						DESCR.		DWG NUMBER	
REV ECR DESCRIPTION DATE BY CHKR						INLINE LLB MINN TOP BALL CURB VALVE (IPS-PE PJ x IPS-PE PJ)		E25142N	
PER EST NO: DXXXX EST FIN WT = 0.0000 lbs									

DWG NUMBER  
E25142N  
442-MRKTG

TITLE TO AND OWNERSHIP OF THIS ENGINEERING DATA REMAINS IN Mueller Co. NO USE IS TO BE MADE OF THIS DATA EXCEPT AS SPECIFICALLY AUTHORIZED BY Mueller Co. ASSENT ON THE PART OF THE RECIPIENT TO THESE CONDITIONS IS PRESUMED