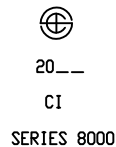


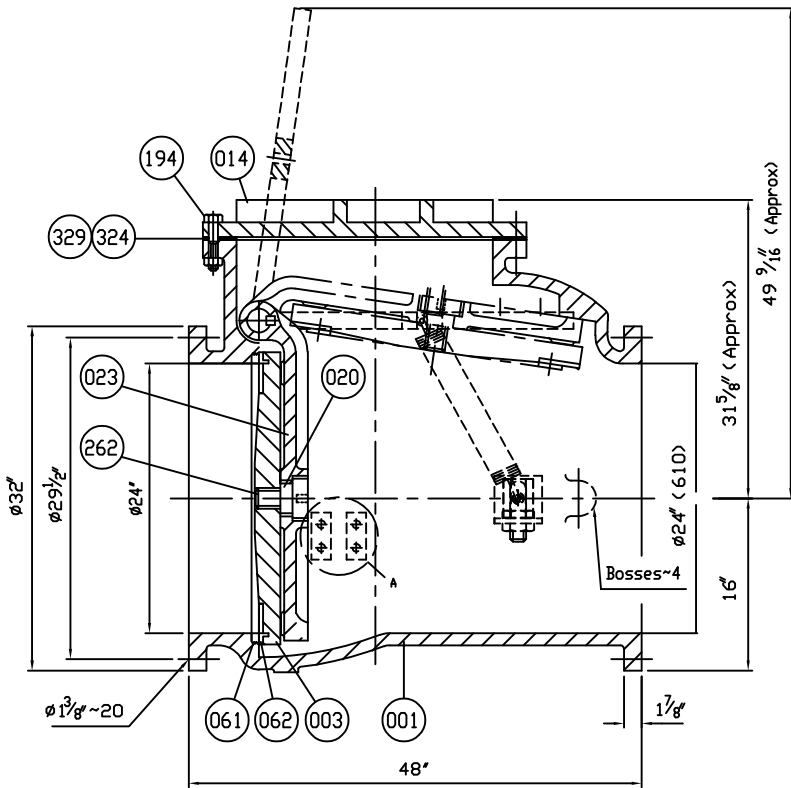
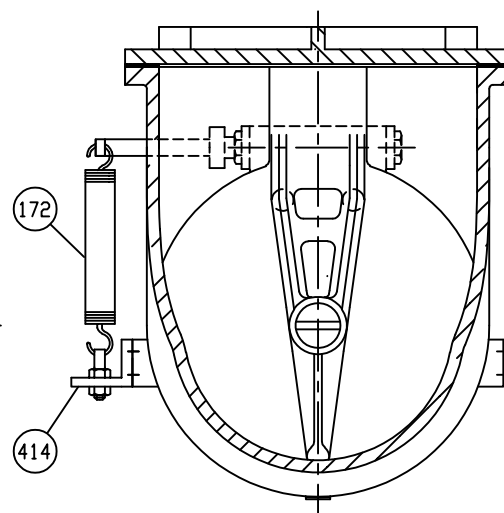
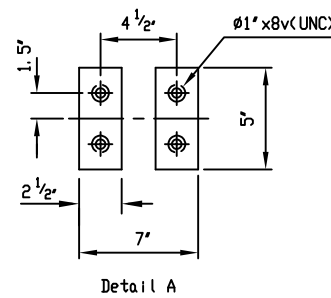
Marking

- 24 CCNE
- 150 PSI AWWA C508
- CI



COVER BOLTS/NUTS		
TYPE	MATERIAL	
STANDARD	STEEL/ZINC	✓
S1	304 STN. STEEL	
S3	316 STN. STEEL	

Remark - Flanged dimensions follow ANSI, B16.1 CL. 125



NO.	PARTS	MATERIAL	ASTM DESIGNATION	QTY
462	Retaining Plug	Brass	B 21	1
414	Arm B	Zinc Coated Steel	A 36	1
351	O-Ring	Rubber (Buna N)	D 2000 BK 707	2
329	Cover O-Ring	Rubber (Buna N)	D 2000 BK 807	1
327	Gasket	Rubber (Buna N)	D 2000 BK 807	2
324	Cover Gasket	Rubber (Buna N)	D 2000 BK 807	1
262	Disc Bolt	Stainless Steel	A 276 Type 304	1
194	Cover Bolt & Nut	SEE COVER BOLT TABLE		1 set
172	Spring	Zinc Coated Steel	A 36	1
166	Plug $\phi 1/2'$	Stainless Steel	A 276 Type 304	1
161	Key	Stainless Steel	A 276 Type 304	1
159	Hinge Pin	Stainless Steel	A 276 Type 304	1
155	Weight Arm	Ductile Iron	A 536 Gr. 65-45-12	1
153	Bolt	Zinc Coated Steel	A 307 Grade B	2
088	Seat Nut	Brass	B 21	1
062	Disc Seat Ring	Rubber (Buna N)	D 2000 BK 807	1
061	Body Seat Ring	Bronze	B 62	1
023	Arm	Ductile Iron	A 536 Gr. 65-45-12	1
020	Sleeve	Stainless Steel	A 276 Type 304	1
014	Cover	Cast Iron	A 126 Class B	1
003	Disc	Cast Iron	A 126 Class B	1
001	Body	Cast Iron	A 126 Class B	1

MATERIAL LIST

HYDRD SHELL	300	PSI.
HYDRD VALVE SEAT	150	PSI.
HYDRD BACK SEAT	—	PSI.
AIR SEAT	—	PSI.
STEAM	—	PSI.

TEST PRESSURE

WORKING PRESSURE	150	PSI.
------------------	-----	------



SCALE	DR.	DATE	REF. DWG.
N.T.S.	JON COLPAN	10/17/11	USA1260D

TITLE
 SIZE 24" SWING CHECK VALVE AWWA C508
 BRONZE BODY SEAT RING & BUNA N DISC SEAT RING
 WITH ONE LEVER AND SPRING

TYPE	DWG NO.	REV.
8001AB1LS	M80036	3

REVISION 1, ADDED COVER O-RING TO MATERIAL TABLE AND REMOVED PAINT NOTE, AA, 11/28/17
 REVISION 3. UPDATED NEW LOGOS, TT/JL, 07/19/19

REVISION 2. ADDED COVER BOLT TABLE, TT/JL, 06/06/19