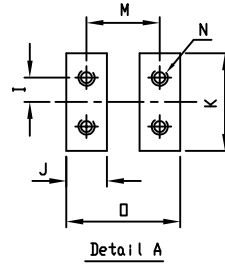
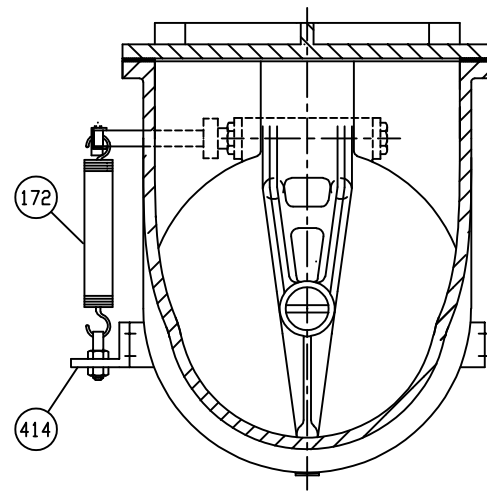
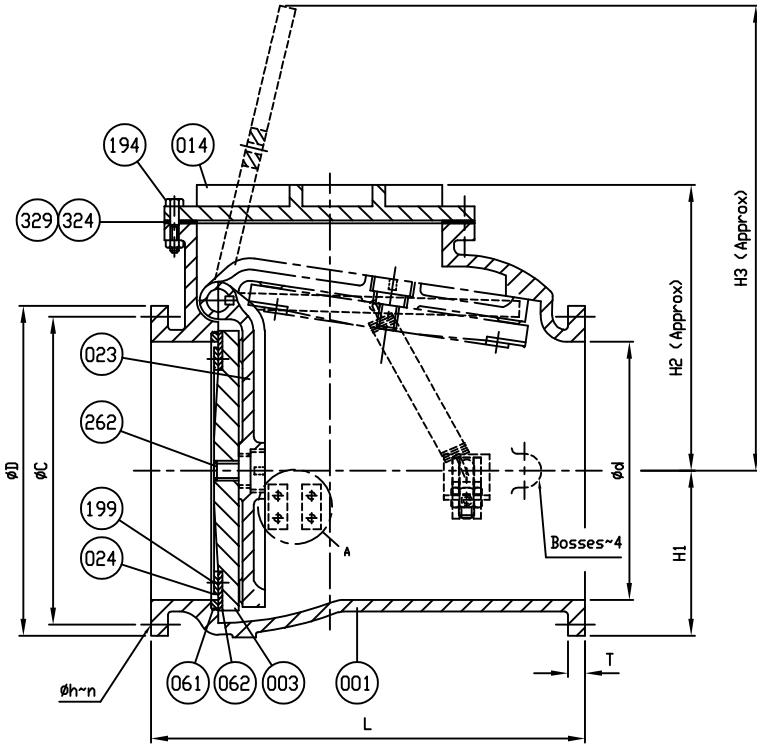


Marking
 SIZE (INCH)
 CCNE
 150 PSI
 AWWA C508
 CI

200-
 CI
 SERIES 8000



COVER BOLTS/NUTS		✓
TYPE	MATERIAL	
STANDARD	STEEL/ZINC	
S1	304 STN. STEEL	
S3	316 STN. STEEL	



462	Retaining Plug	Brass	B 21	1
414	Arn B	Zinc Coated Steel	A 36	1
351	O-Ring	Rubber (Buna N)	D 2000 BK 707	2
329	Cover O-Ring	Rubber (Buna N)	D 2000 BK 807	1
327	Gasket	Rubber (Buna N)	D 2000 BK 807	2
324	Cover Gasket	Rubber (Buna N)	D 2000 BK 807	1
262	Disc Bolt	Stainless Steel	A 276 Type 304	11
199	Seat Holder Bolt	Stainless Steel	A 276 Type 304	1 set
194	Cover Bolt & Nut	SEE COVER BOLT TABLE		set
172	Spring	Zinc Coated Steel	A 36	1
166	Plug 1/2"	Stainless Steel	A 276 Type 304	1
161	Key	Stainless Steel	A 276 Type 304	1
159	Hinge Pin	Stainless Steel	A 276 Type 304	1
155	Weight Arm	Ductile Iron	A 536 Gr. 65-45-12	1
153	Bolt	Zinc Coated Steel	A 36	2
088	Seat Nut	Brass	B 21	1
062	Disc Seat Ring	Rubber (Buna N)	D 2000 BK 807	1
061	Body Seat Ring	Bronze	B 62	1
024	Seat Holder	Ductile Iron	A 536 Gr. 65-45-12	1
023	Arn	Ductile Iron	A 536 Gr. 65-45-12	1
014	Cover	Cast Iron	A 126 Class B	1
003	Disc	Cast Iron	A 126 Class B	1
001	Body	Cast Iron	A 126 Class B	1
NO.	PARTS	MATERIAL	ASTM DESIGNATION	Q'TY

MATERIAL LIST			
HYDRO SHELL		300	PSI.
HYDRO VALVE SEAT		150	PSI.
HYDRO BACK SEAT		—	PSI.
AIR SEAT		—	PSI.
STEAM		—	PSI.
TEST PRESSURE			
WORKING PRESSURE		150	PSI.



SIZE	L	ANSI B16.1 CL. 125					H1	H2	H3	L1	I	J	K	M	N	□
		∅D	∅C	∅h	n	T										
30	52 1/2	38 3/4	36	1 3/8	28	2 1/8	19 3/8	36 3/8	62 5/8	27 3/4	2 1/2	3 1/8	7 1/2	5 1/2	5/8x11v(UNC)	8 1/16
36	60 1/2	46	42 3/4	1 5/8	32	2 3/8	23	40	65 3/8	17 1/2	2 1/2	3 1/8	7 1/2	5 1/2	5/8x11v(UNC)	8 1/16

SCALE	DR. ALEX ADAMS	DATE 09/26/12	REF. DWG.
N.T.S.	CHK. JON COLPANA	APP. JACKSON	E.C.N. USA1326C
TITLE	SIZE 30" AND 36" SWING CHECK VALVE AWWA C508 BRONZE BODY SEAT RING & BUNA N DISC SEAT RING WITH ONE LEVER AND SPRING		
TYPE:	8001AB1LS	DWG NO.	M80044
			REV. 3

DS01 ISSUED : 240640 REVISED: -USA1326B->ADD THREAD UNC