

Mueller® Angle Meter Dual Check Valve

GENERAL

All parts of the Mueller Angle Meter Dual Check Valve are corrosion resistant for many years of dependable service. As of January 4, 2014, body and endcap are made from low lead brass that complies with AWWA C800. Dual poppet assemblies are made of acetal plastic material with natural rubber gaskets, and springs are stainless steel.

All internal parts of Mueller Angle Meter Dual Check Valves are replaceable without removing the valve from the line. The O-ring sealed end-cap provides full,

easy access to working parts. Each poppet valve, with attached gasket and spring, can be replaced individually if desired. In addition, both in-line and angle styles use the same replacement parts for a given size, which simplifies parts inventory.



Application

Normally, install in-line or angle Mueller Angle Meter Dual Check Valves on the outlet of a meter to prevent the backflow of possibly contaminated water into

the potable water system. Mueller Dual Check Valves installed after the meter can also prevent hot water back-up damage to meter parts and eliminate meter box flooding when making meter changes.

FIELD TESTING PROCEDURE

NOTE: The Mueller Angle Meter Dual Check Valve normally does not have to be removed from the line for testing. If valve is removed from the line for testing, each check can be tested in the valve by removing the other check (poppet & spring).

1. Disconnect inlet end of valve from line or meter.
2. Check the valve inlet for leakage for 1 minute. The first check is sealing if no

leakage occurs and, after pushing the 1st poppet inward*, a small amount of water sprays out the end of the valve.

NOTE: If no water sprays out the inlet end after pushing the 1st poppet inward, the 2nd poppet was sealing instead of the 1st poppet.

3. If 1st poppet sealed, hold 1st poppet open and check 2nd poppet 1 minute for leakage. If no leakage, the 2nd poppet is sealing.

4. If both check valves are sealing, replace in line or meter.

5. If either or both checks leak, obtain a seal repair kit from your authorized Mueller distributor. Mueller Co. suggests replacing all parts furnished in the kit. Then, retest the valve for leakage for backpressure prior to replacing in line.

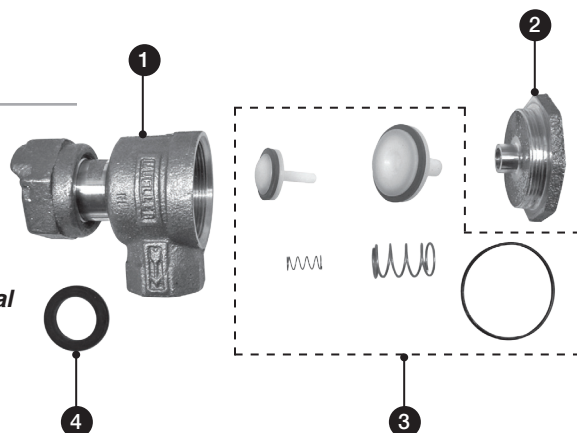
*Above 100psig, the 1st poppet is difficult to push open with your finger. Tester may wish to remove valve from line for testing.

REPAIR PARTS

ID	PART	DESCRIPTION
1	DC-1	Body
2	DC-2	Cap
3	DC-3	Sealing Kit (see note 1)
4	DC-4	Rubber Meter Washer

NOTE 1: For all size ASSE approved Dual Check Valves and includes:

- A. 1st Poppet & Gasket
- B. 2nd Poppet & Gasket
- C. O-ring - 2nd Poppet I.D. Seal
- D. Spring - 1st Check
- E. Spring - 2nd Check
- F. O-ring - Cap Seal



Water (U.S.)
1.800.423.1323
www.muellercompany.com
moreinfo@muellercompany.com

International
1.423.490.9555
www.mueller-international.com
international@muellercompany.com

Form 11515 – Rev 06/16