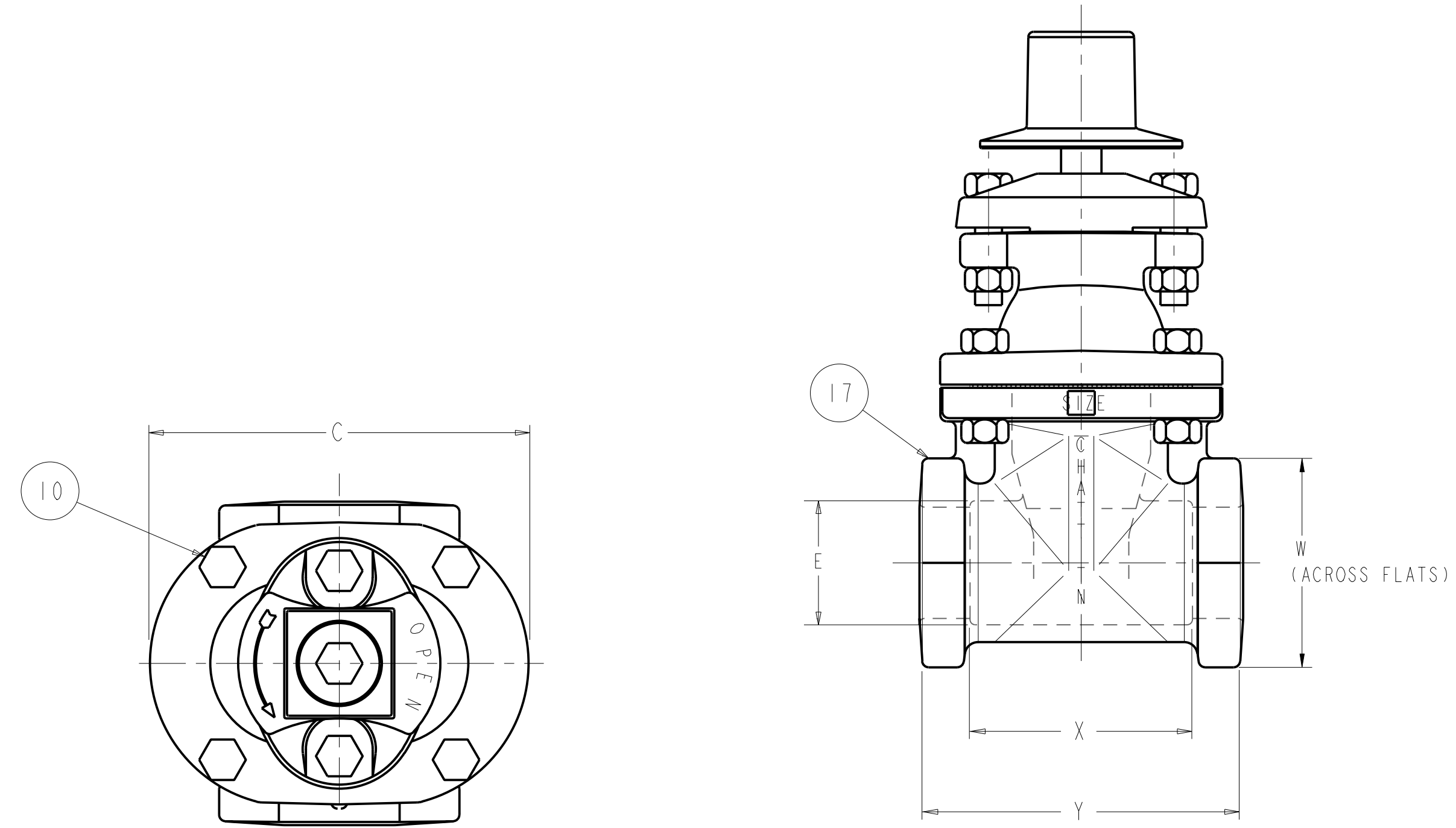
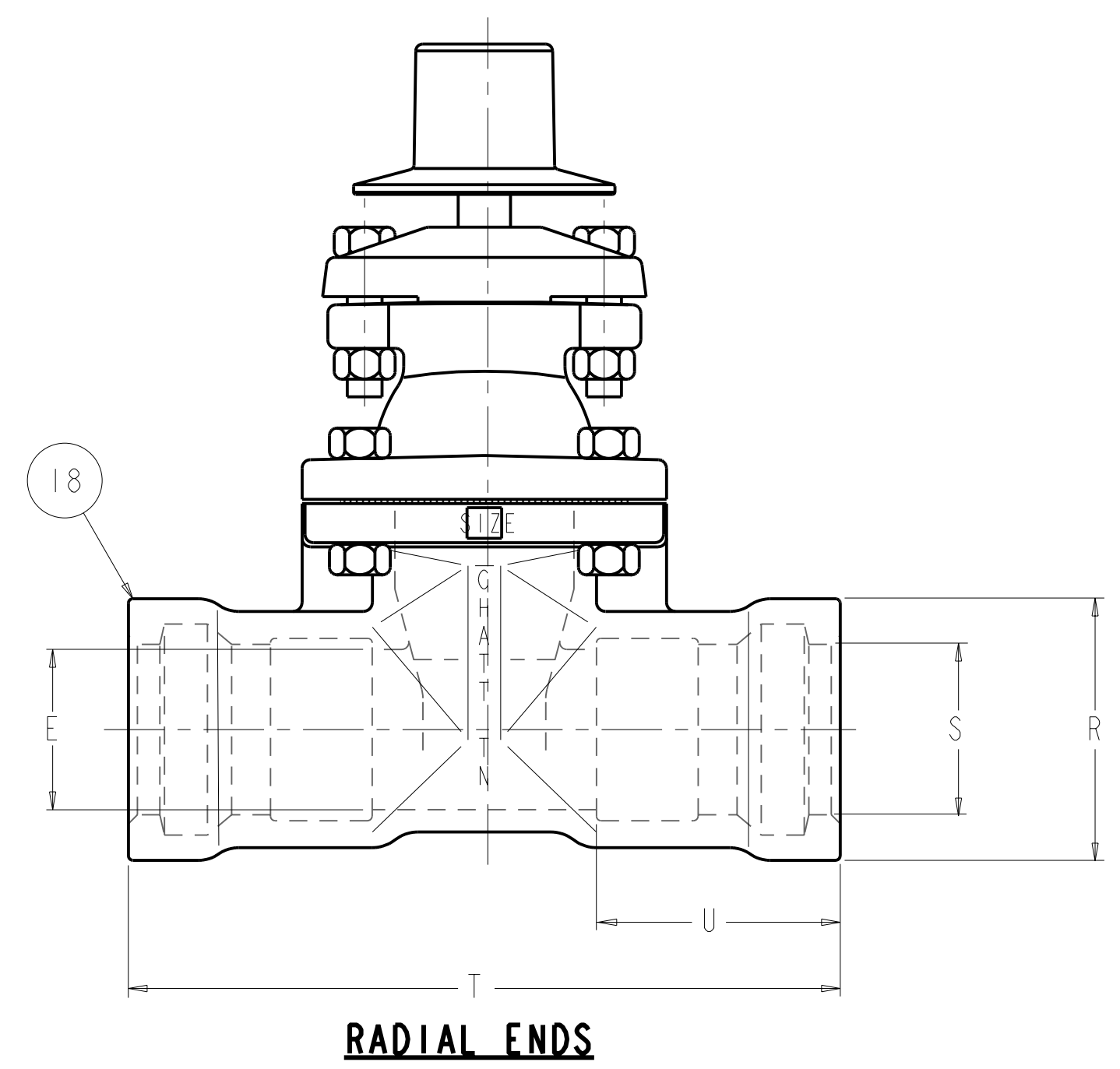


PART LIST					
ITEM	DESCRIPTION	REQ'D	MATERIAL	ASTM	
1	CAP SCREW	1	304 STAINLESS STEEL	A193	GRADE 8B
2	WRENCH NUT	1	CAST IRON [SEE NOTE 2]	A126	CLASS B
3	STEM	1	BRONZE	B138	ALLOY C67600
4	STUFFING BOX	1	CAST IRON [SEE NOTE 2]		CLASS B
5	STUFFING BOX BOLT STUFFING BOX NUT	2	304 STAINLESS STEEL 304 STAINLESS STEEL	A193 F594	GRADE B8 GROUP 1
6	O-RING	3	RUBBER		NITRILE
7	O-RING	1	RUBBER		NITRILE
8	ANTI-FRICTION WASHER	2	CELCON		
9	BONNET	1	CAST IRON [SEE NOTE 2]	A126	CLASS B
10	BONNET BOLT BONNET NUT	"Z"	304 STAINLESS STEEL 304 STAINLESS STEEL	A193 F594	GRADE B8 GROUP 1
11	BONNET GASKET	1	RUBBER	D2000	NEOPRENE
12	DISC NUT	1	BRONZE	B62	
13	DISC	1	SEE NOTE 1 & 2		
14	GUIDE CAP	2	CELCON		
15	BODY - FLANGE ENDS	1	CAST IRON [SEE NOTE 2]	A126	CLASS B
16	BODY - M.J. ENDS	1	CAST IRON [SEE NOTE 2]	A126	CLASS B
17	BODY - SCREW ENDS	1	CAST IRON [SEE NOTE 2]	A126	CLASS B
18	BODY - PVC ENDS	1	CAST IRON [SEE NOTE 2]	A126	CLASS B

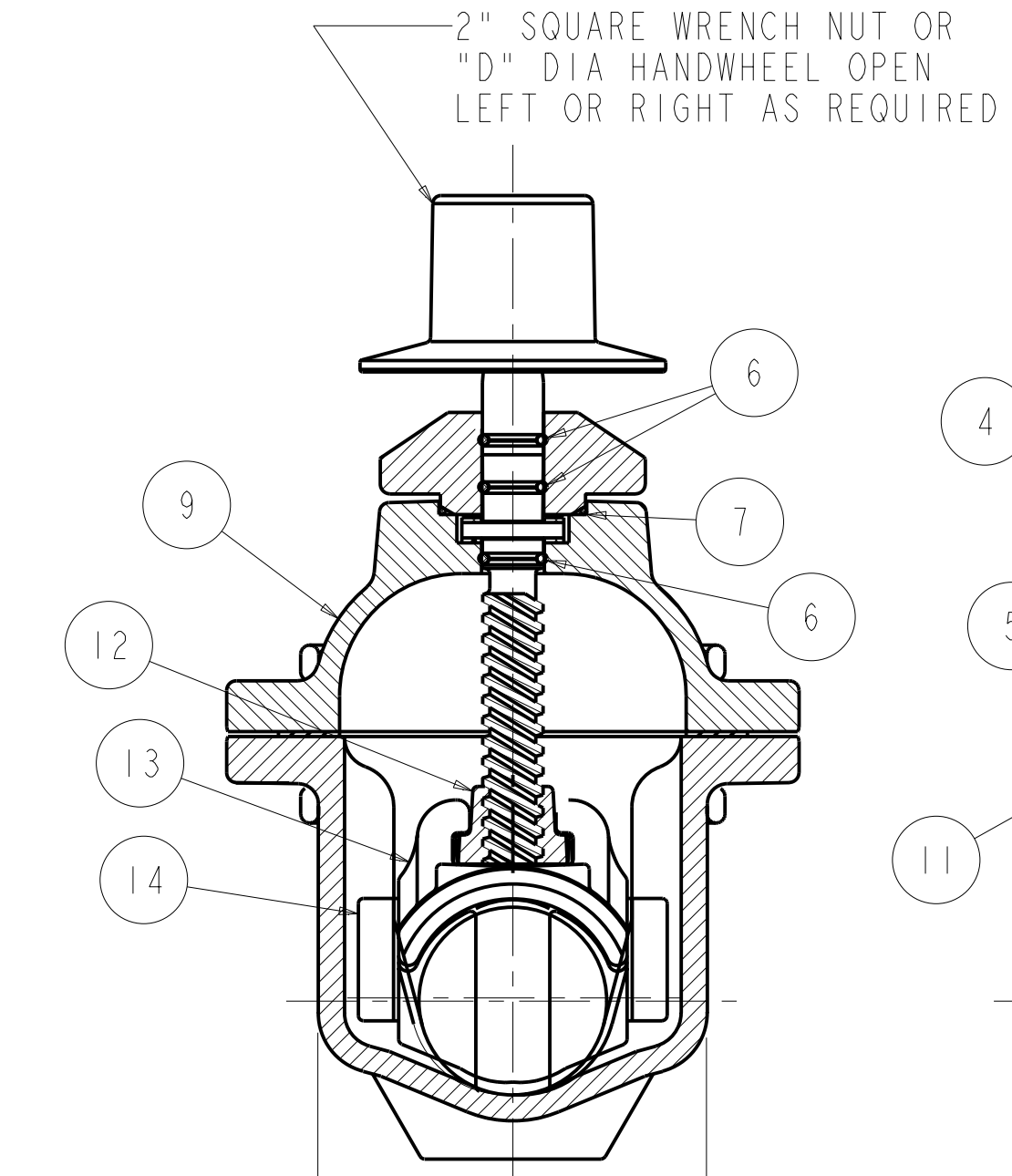


**SCREW ENDS**

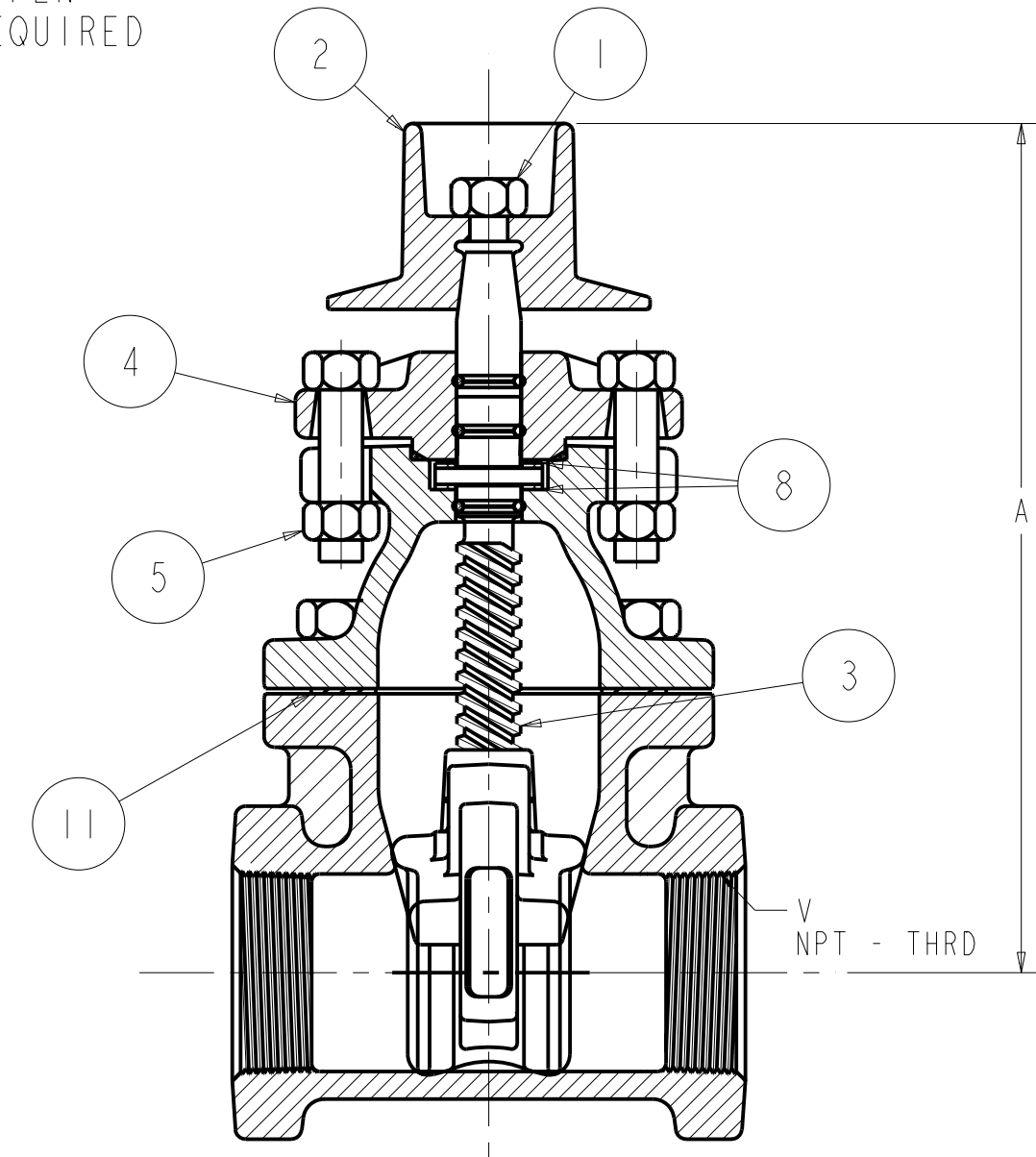


**RADIAL ENDS**

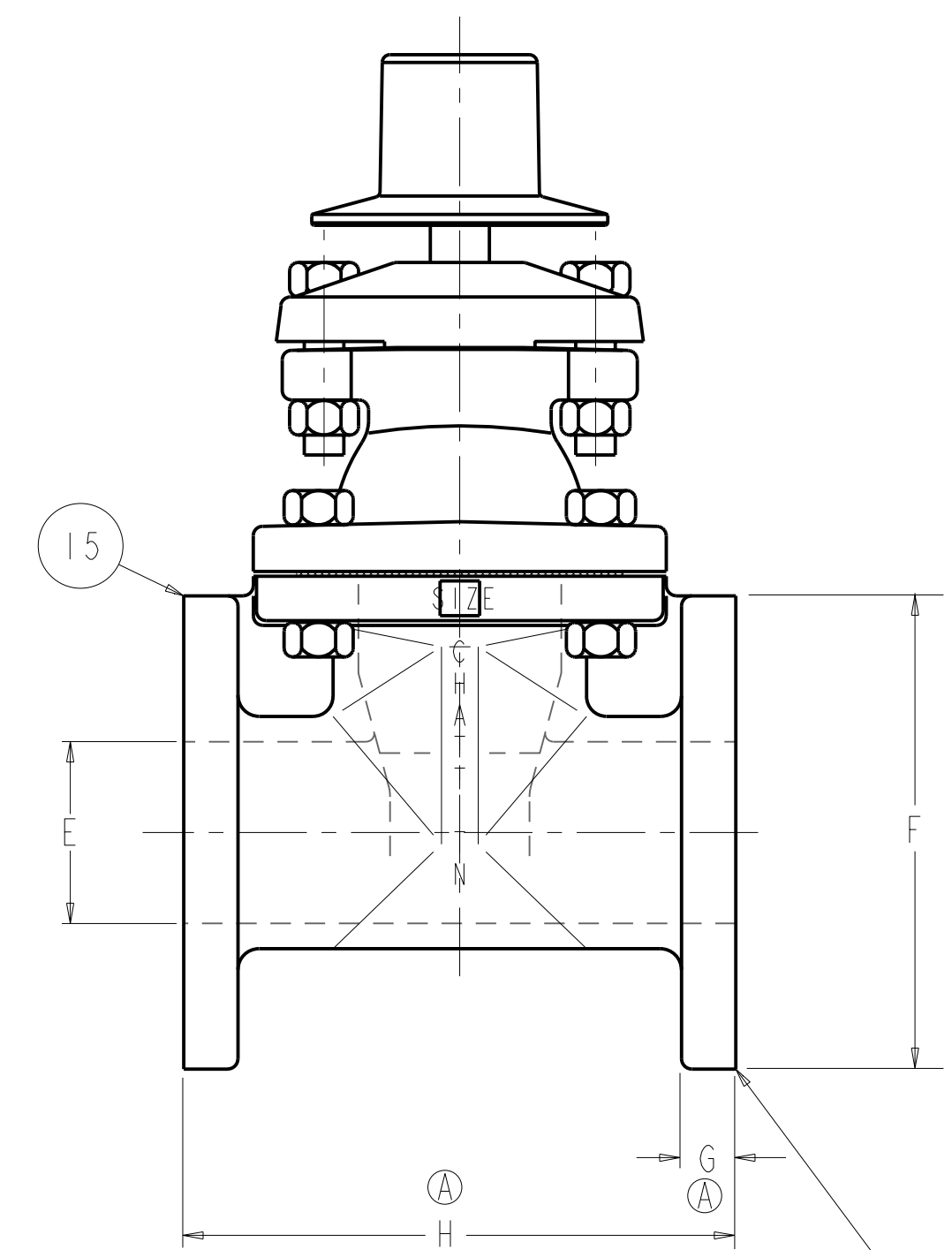
- 1. RUBBER ENCAPSULATED CAST IRON DISC  
CAST IRON - ASTM A126 CLASS B  
RUBBER - SBR - ASTM D2000
- 2. MANUFACTURER'S OPTION TO UPGRADE MAT'L  
TO D1 - A536 GR 65-45-12



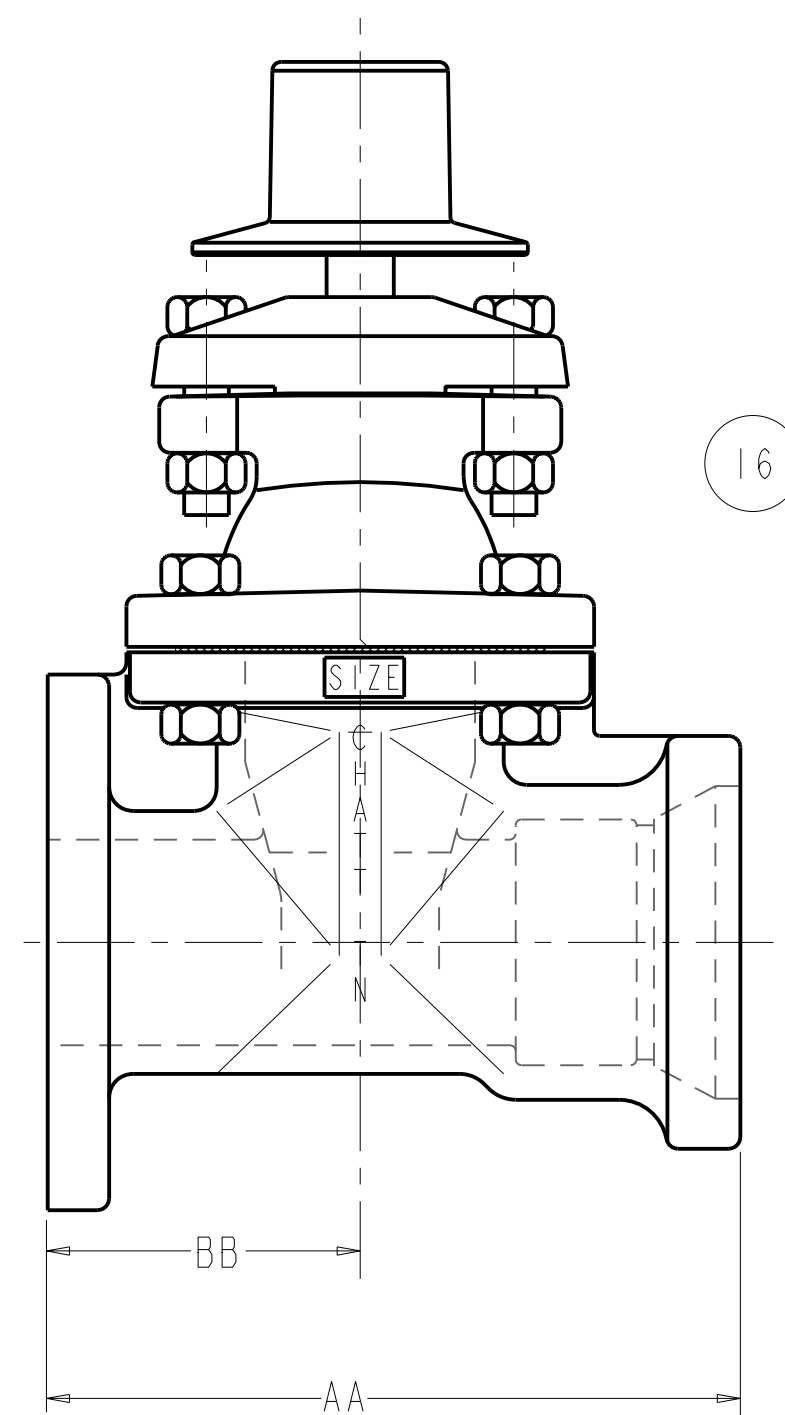
**SCREW ENDS**



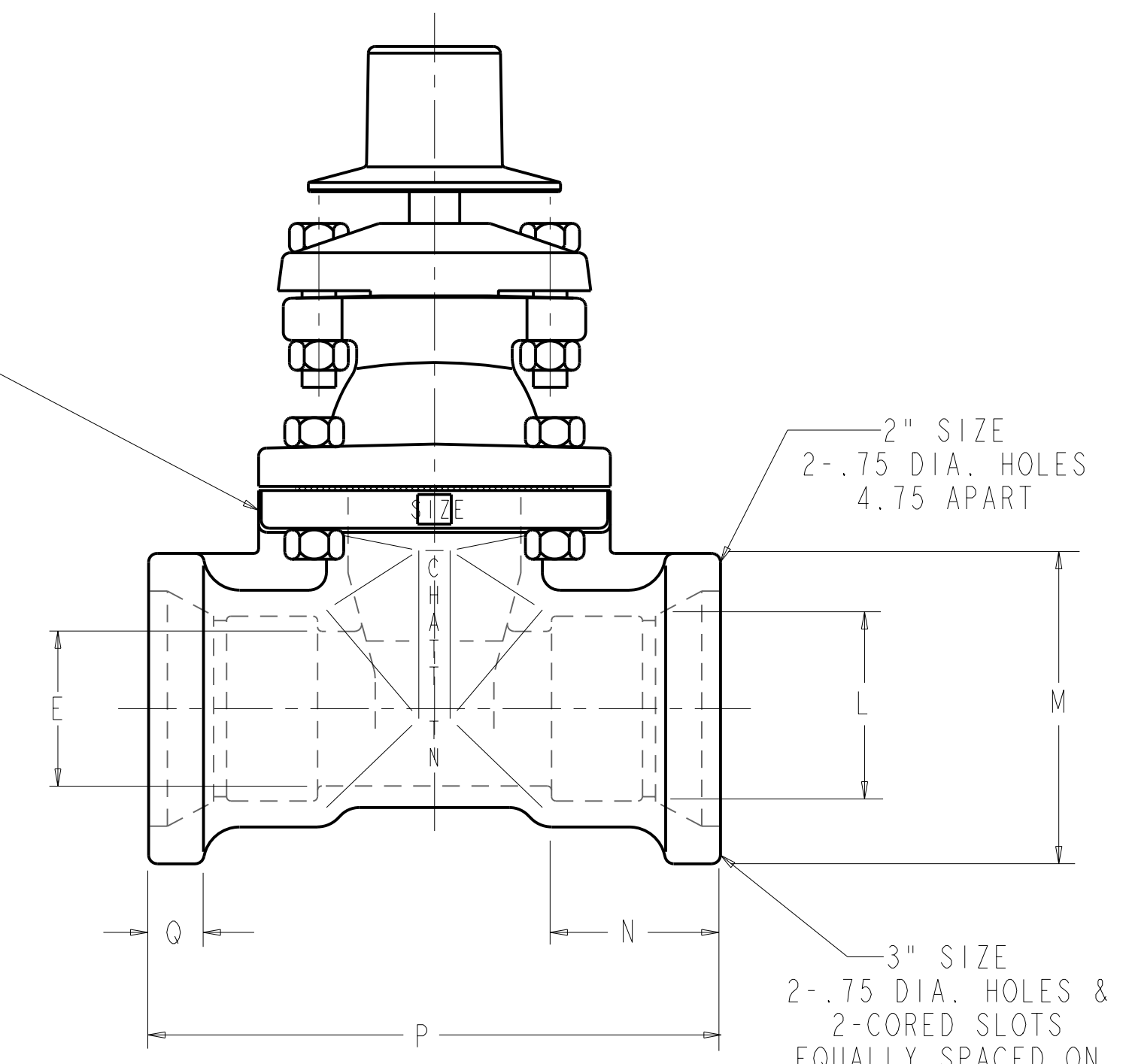
**SCREW ENDS**



**FLANGE ENDS**



**FLANGE x MECH. JOINT ENDS**



**MECH. JOINT ENDS**

J-NO. & SIZE HOLES  
EQUALLY SPACED ON  
K-B.C. - STRADDLE

\* MUELLER DOES NOT OFFER A 2.5" FL X MJ VALVE

**DIMENSIONS - INCHES (ths drawing only)**

VALVE SIZE	A	B	C	D	E	F	G	H	J	K	L	M	N	P	Q	R	S	T	U	V	W	X	Y	Z	AA	BB	TURN TO OPEN
2	9.88	4.77	7.02	6.00	2.30	6.00	Ø.69	7.00	4 - .75	4.75	Ø2.61	4.62	2.50	8.50	.81	3.75	2.44	10.25	3.50	2 - 11.5	3.88	4.12	5.88	4	8.39	4.36	8
2.5	12.38	6.01	8.63	6.00	2.80	7.00	Ø.75	7.50	4 - .75	5.50	N/A	N/A	N/A	N/A	N/A	Ø4.44	Ø2.93	Ø12.24	3.69	2.5 - 8	Ø4.38	4.12	Ø6.76	6	N/A *	N/A *	11
3	12.38	6.01	8.63	6.00	3.30	7.50	Ø.80	8.00	4 - .75	6.00	4.08	7.50	2.50	9.62	Ø.94	Ø5.16	3.56	11.75	4.12	3 - 8	Ø5.12	5.12	6.88	6	8.80	4.55	11

ECO 1343620 CHANGED TO STAINLESS BOLTS & NUTS WERE STEEL REVERSED G & H TO MAINTAIN CONSISTENCY CAP 04/06/05

ECO 1345262 REMOVED NOTES ADDED ITEM 19 WIPER RING CAP 04/28/05

ECO 1365159 REMOVED NOTES REMOVED WIPER RING ONLY ON 4-12 CAP 11/07/05

ECO 1382063 5.16 WAS 5.19 .69 WAS .62 12.24 WAS 10.75 2.93 WAS 2.99 4.38 WAS 4.25

ECO 1453116 ADDED MANUFACTURER'S OPTION NOTE 1 WAS "\*" & ADDED NOTE 2 MCB 11/8/07

ECO 1544739 ADDED FL X MJ VIEW ADDED "AA" & "BB" COLUMNS ADDED NOTE REMOVED DUST SEAL FROM SCREW END VIEW RAB 8/28/10

**APPROVED**  
By Charles Hines at 2:25 pm, Sep 08, 2010

DR BY: JLC	DATE: 4/3/00	UNLESS OTHERWISE NOTED	THIRD ANGLE PROJECTION	C.D. NO.
CHKD: TRJ	DATE: 4/10/00	BREAK CAST CORNERS!		
ENGR: RWV	DATE: 4/10/00	BREAK MACH CORNERS!		
MFR:		TOLERANCES	REF. NO.	FINISH
INS:		UNLESS OTHERWISE NOTED	SCALE	ASSY
TOOL:		LINEAR	ANGULAR	NONE
FBKT:		±	±	
MAT'L NOTED		DESCR.		NUMBER
Mueller Co.		A-2360-6, -8, -23, & -27 NRS - AWWA - 250W - 500 TEST		6605-4