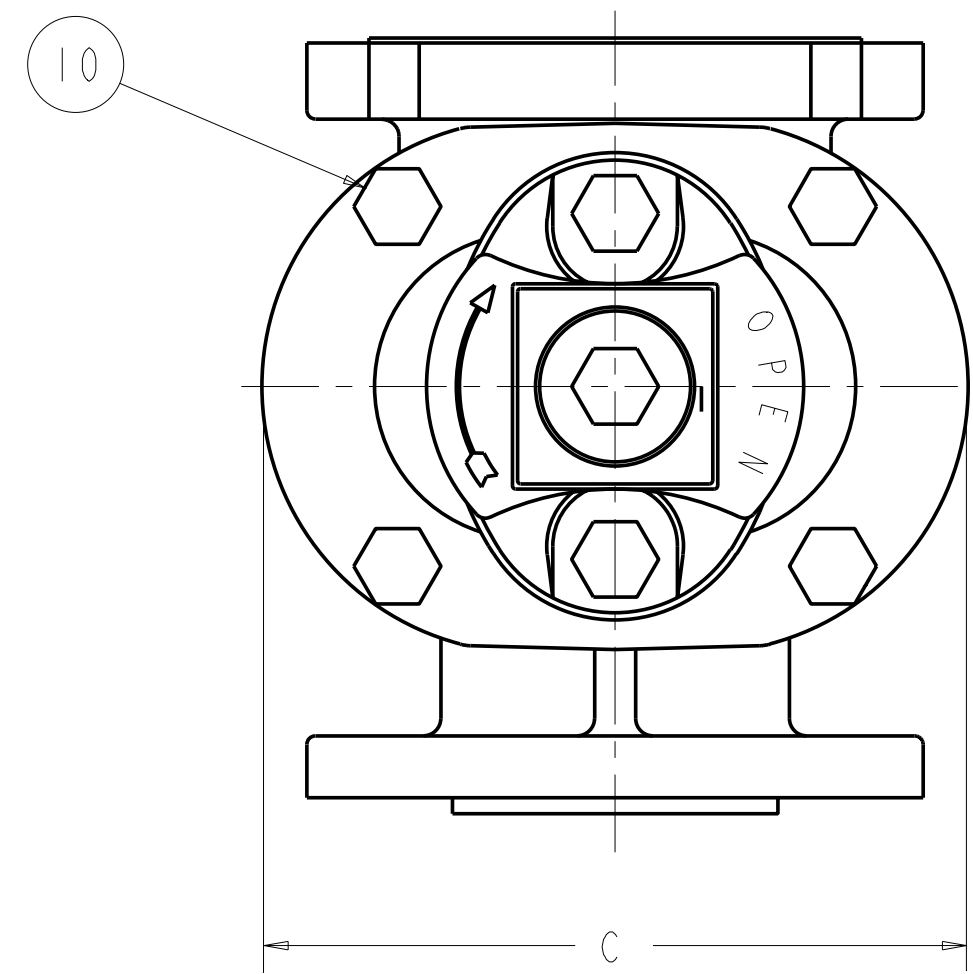
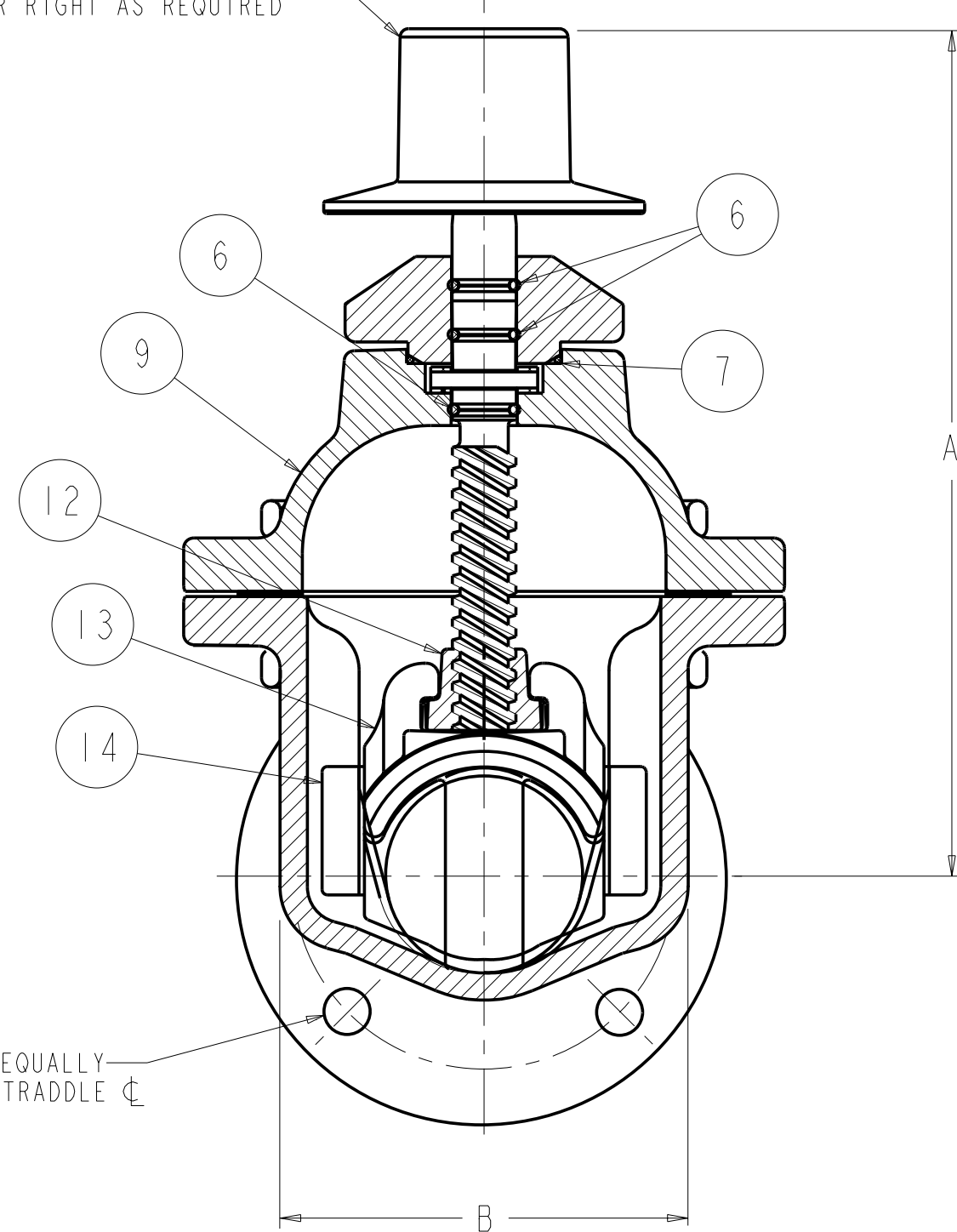


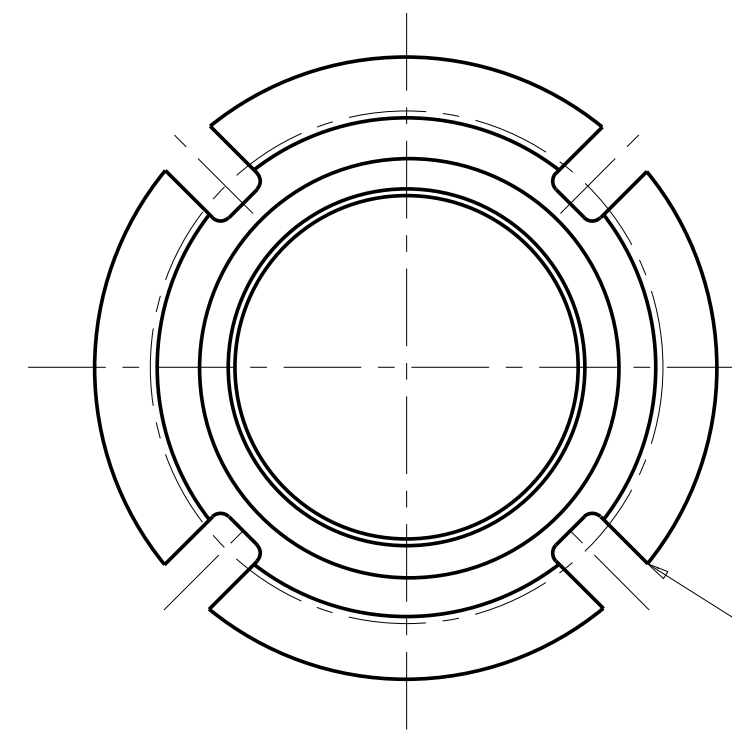
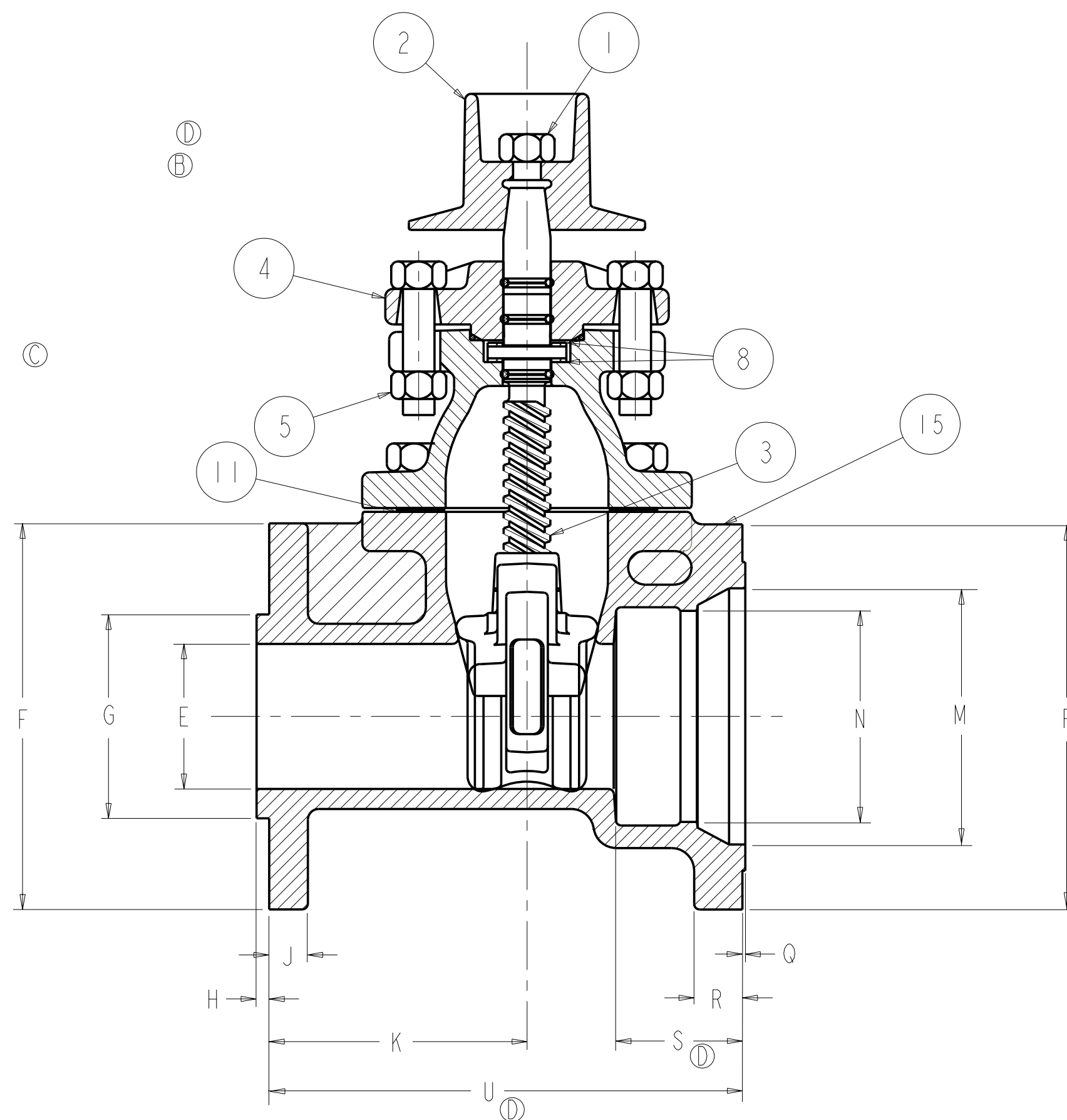
6689 2 IN & 3 IN MUELLER T-2360-6 FLANGE X MECH. JOINT ENDS RESILIENT WEDGE TAPPING VALVE



2" SQUARE WRENCH NUT OR "D" DIA HANDWHEEL
OPEN LEFT OR RIGHT AS REQUIRED



4 - .75 DIA. HOLES EQUALLY
SPACED ON "L" B.C. - STRADDLE ϕ



4 - .75 SLOTS EQUALLY SPACED
ON "T" B.C. - STRADDLE ϕ

PART LIST					
ITEM	DESCRIPTION	REQ'D	MATERIAL	ASTM	
1	CAP SCREW	1 (A)	304 STAINLESS STEEL	A193	GRADE B8
2	WRENCH NUT	1	CAST IRON [SEE NOTE 2] (F)	A126	CLASS B
3	STEM	1	BRONZE	B138	ALLOY C67600
4	STUFFING BOX	1	CAST IRON [SEE NOTE 2] (F)	A126	CLASS B
5	STUFFING BOX BOLT STUFFING BOX NUT	2 (A)	304 STAINLESS STEEL 304 STAINLESS STEEL	A193 F594	GRADE B8 GROUP 1
6	O-RING	3	RUBBER	D2000	NITIRLE
7	O-RING	1	RUBBER	D2000	NITIRLE
8	ANTI-FRICTION WASHER	2	CELCON		
9	BONNET	1	CAST IRON [SEE NOTE 2] (F)	A126	CLASS B
10	BONNET BOLT BONNET NUT	"V" (A)	304 STAINLESS STEEL 304 STAINLESS STEEL	A193 F594	GRADE B8 GROUP 1
11	BONNET GASKET	1	RUBBER	D2000	NEOPRENE
12	DISC NUT	1	BRONZE	B62	ALLOY C83600 (A)
13	DISC	1	SEE NOTE 1 & 2 (E) (F)		
14	GUIDE CAP	2	CELCON		
15	BODY	1	CAST IRON [SEE NOTE 2] (F)	A126	CLASS B

(E) NOTES:

1. RUBBER ENCAPSULATED CAST IRON DISC
CAST IRON - ASTM A126 - CLASS B
RUBBER - SBR - ASTM D2000

(F) 2. MANUFACTURER'S OPTION TO UPGRADE MAT'L
TO D1 - A536 GR 65-45-12

DIMENSIONS FOR MUELLER RESILIENT WEDGE TAPPING VALVE (this drawing only)

SIZE	A	B	C	D	E	F	G	H	J	(D) K	L	M	N	P	Q	R	S	T	(D) U	V	URNS TO OPEN
2	9.88	4.77	7.02	6.00	2.30	6.00	2.97	.16	.69	(E) 4.36	4.75	(E) 3.53	(E) 2.61	6.25	.06	.81	2.29	4.75	(E) 8.33	4	8
3	12.38	6.01	8.63	8.00	3.30	7.50	3.97	(E) .18	.75	(E) 4.55	6.00	(E) 4.98	(E) 4.08	7.50	.06	.94	2.56	6.19	(E) 8.80	6	11

ECO 1343769 CHANGED TO STAINLESS STEEL BOLTS & NUTS WERE COATED STEEL BOLTS ADDED C83600 CAP 04/07/05	ECO 1345596 ADDED ITEM 16 WIPER RING SIZES 4-12 CAP 05/03/05	ECO 1366910 REMOVED WIPER RING ONLY ON SIZES 4-12 CAP 11/11/05	ECO 1372615 REMOVED #16 BALLON FOR WIPER. 4.46 WAS 4.36. 4.75 WAS 4.56. 8.55 WAS 8.40. 8.99 WAS 8.81. RELOCATED DIM'S U & S TO FLANGE FACE KLC 12/01/05	ECO 1381141 .18 WAS .19 4.36 WAS 4.46 4.55 WAS 4.75 3.53 WAS 3.50 4.98 WAS 5.00 8.33 WAS 8.55 2.61 WAS 2.62 CAP 01/31/06	18 WAS .19 ADDED NUMBERS TO NOTES "1" WAS "+" ADDED MANUFACTURER'S OPTION ADDED NOTE 2 MCB 11/7/07
--	--	--	---	--	--

APPROVED
By CHAD POOLE at 6:07 pm, Nov 18, 2007

MUELLER CONFIDENTIAL
Title and ownership of this engineering data
remains in Mueller Co. No use is to be made
of this data except as specifically authorized
by Mueller Co. Assent on the part of recipients
to these conditions is presumed.

DR BY: JLC	DATE: 07/24/00	UNLESS OTHERWISE NOTED BREAK CAST CORNERS!	THIRD ANGLE PROJECTION	C.D. NO.
CHKD: TRJ	DATE: 07/24/00	BREAK MACH CORNERS!	PURCH: NO	FINISH: ASSY
ENGR: RWV	DATE: 07/24/00	TOLERANCES UNLESS OTHERWISE NOTED	REF. NO.	SCALE: NONE
MPR:		LINEAR: ±	ANGULAR: ±	STR. NO.
MFG:		MATERIAL: NOTED		
TOOL:		DESCR: 2" & 3" RWTW - T2360		
FBRY:		NUMBER: 6689		