

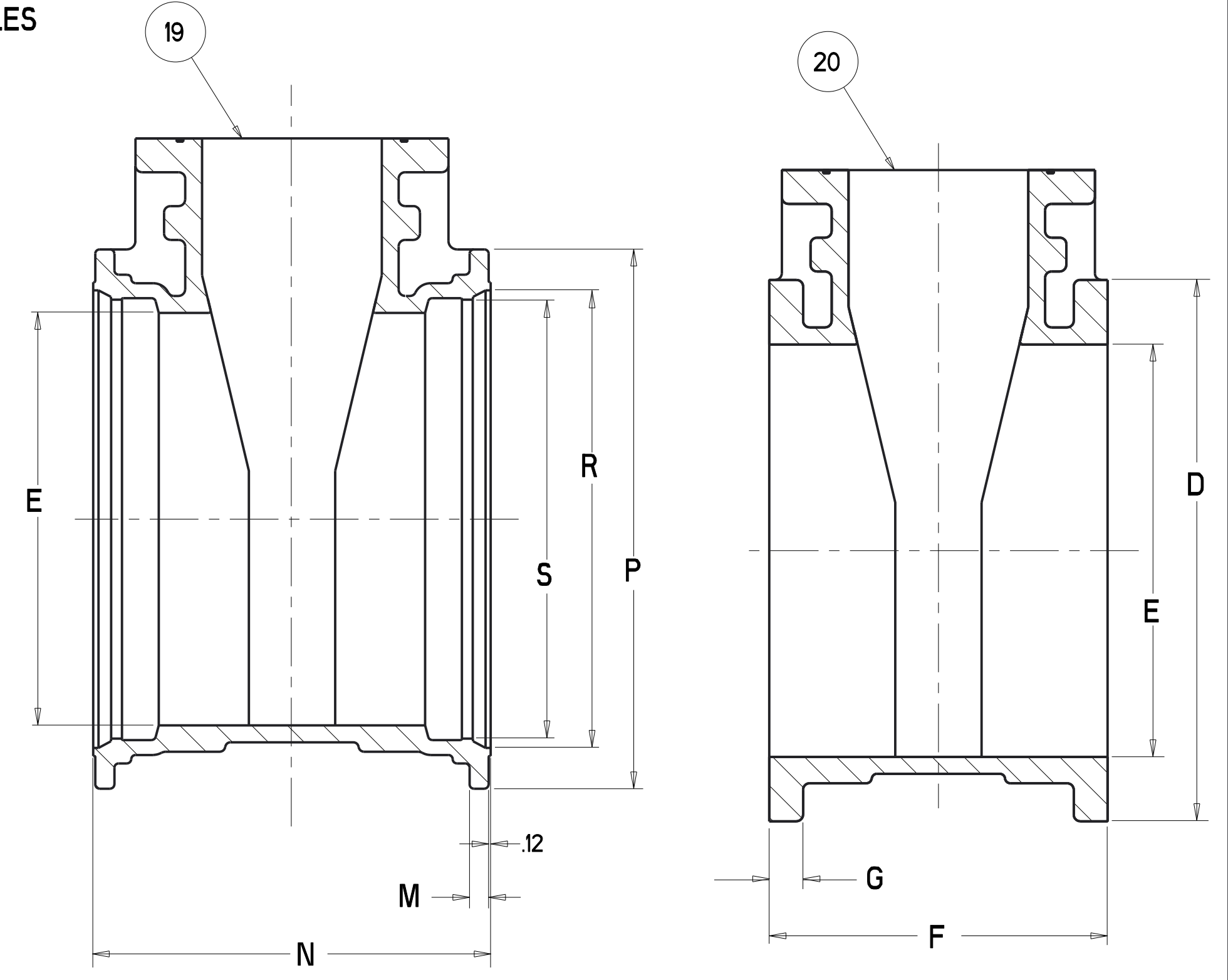
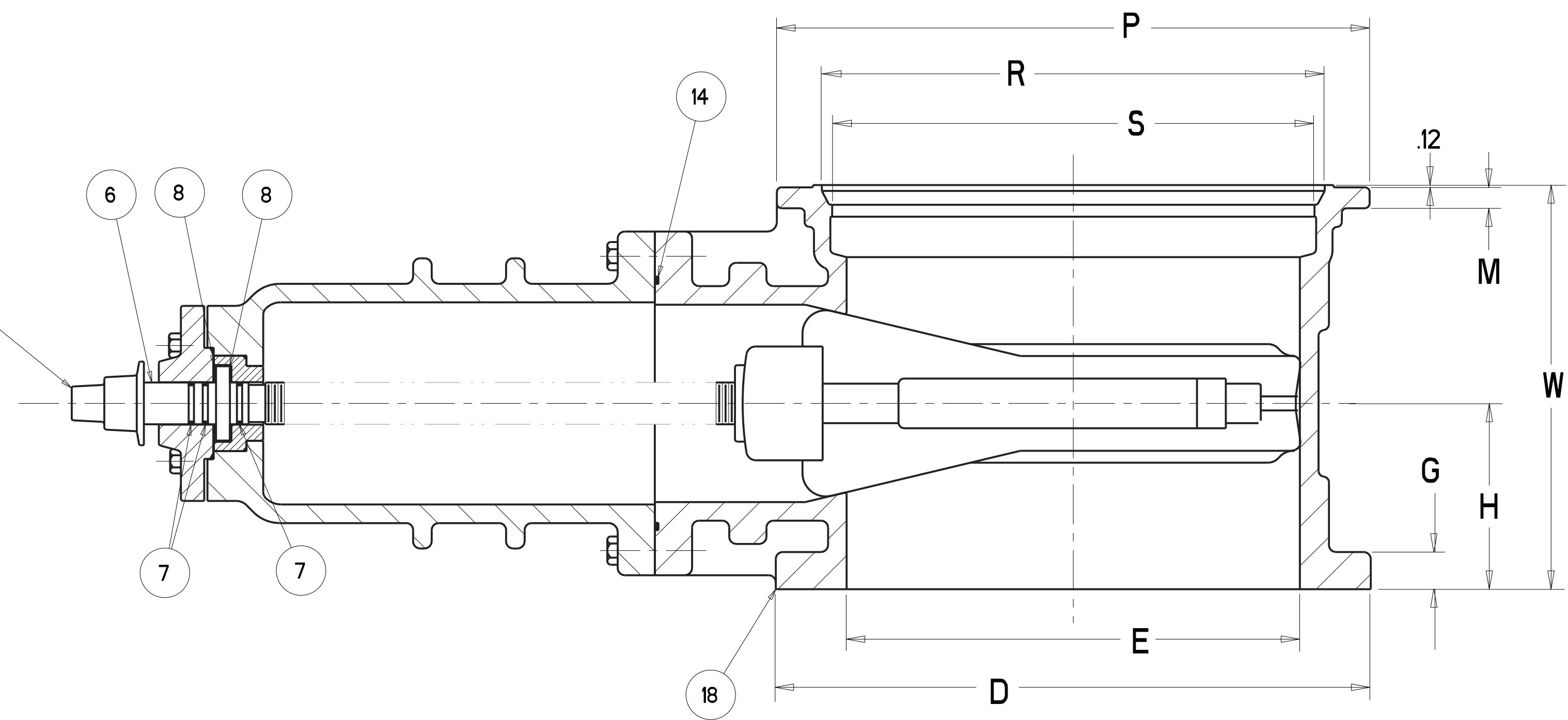
PARTS LIST					
ITEM	DESCRIPTION	REQ'D	MATERIAL	ASTM	SEE NOTE
1	CAP SCREW	1	STEEL	A307	CLASS B
2	WRENCH NUT	1	CAST IRON (SEE NOTE 4)	A126	CLASS B
3	STUFFING BOX	1	DUCTILE IRON	A536	GR. 65-45-12
4	HEX BOLT & NUT	"AA"	STEEL	A307	SEE NOTE 3
5	O-RING	1	RUBBER	D2000	EPDM
6	STEM	1			SEE NOTE 1
7	O-RING	3	RUBBER	D2000	EPDM
8	WASHER	2	BRASS		
9	BONNET	1	DUCTILE IRON	A536	GR. 65-45-12
10	EYEBOLT	2	STEEL		GALVANIZED
11	BONNET BUSHING	1	BRONZE	B62	SEE NOTE 5
12	O-RING	1	RUBBER	D2000	EPDM
13	HEX BOLT & NUT	"L"	STEEL	A307	SEE NOTE 3
14	O-RING	1	RUBBER	D2000	EPDM
15	DISC NUT	1	BRONZE	B62	
16	DISC	1			SEE NOTE 2
17	GUIDE CAP	2	CELCON	M90	
18	BODY FL x MJ	1	DUCTILE IRON	A536	GR. 65-45-12
19	BODY MJ x MJ	1	DUCTILE IRON	A536	GR. 65-45-12
20	BODY FL x FL	1	DUCTILE IRON	A536	GR. 65-45-12
21	PIPE PLUG	2	SUPPLIED WHEN TAPPED		

- NOTES:
- 1) 16" TO 24" VALVES - BRONZE ASTM B584 ALLOY 86400 OR 86500
 - 2) RUBBER ENCAPSULATED DUCTILE IRON DISC
RUBBER - EPDM ASTM D2000
DUCTILE IRON ASTM A536 GRADE 65-45-12
 - 3) BOLTS ARE - SAE J429 GRADE 2
NUTS - ASTM A563 GRADE B
FASTENERS - PLATED TO ASTM F1941 CLASS Fe/Zn 12C
 - 4) MANUFACTURER'S OPTION TO UPGRADE MATERIAL TO DUCTILE IRON A536 GRADE 65-45-12
 - 5) 16 IN. VALVES DO NOT HAVE A BONNET BUSHING

MECH. JOINT END
"X" NO. & SIZE BOLT HOLES
AND OR SLOTS
EQUALLY SPACED ON
"Y" DIA. B.C.

FLANGE END
"J" - NO. & SIZE BOLT HOLES
EQUALLY SPACED ON
"K" - DIA. B.C.

2" SQUARE WRENCH NUT OR
"Z" DIA. HANDWHEEL OPEN LEFT
OR RIGHT AS REQUIRED



VALVE SIZE	A	C	D	E	F	G	H	J	K	L	M	N	P	R	S	W	X	Y	Z	AA	TURNS TO OPEN
16	37.88	26.58	23.50	16.00	16.06	159	8.03	16 - .112	21.25	12	150	19.75	22.56	18.40	17.28	17.91	8 - .88	21.00	18.00	2	49
18	44.19	30.50	25.00	18.38	17.00	105	8.50	16 - .125	22.75	12	150	21.00	24.88	20.74	19.64	19.00	12 - .88	23.25	18.00	4	57
20	48.25	33.75	27.50	20.38	18.00	178	9.00	20 - .125	25.00	12	160	21.50	27.25	22.84	21.74	19.75	14 - .88	25.50	20.00	4	63
24	53.88	39.50	32.00	24.38	20.00	125	10.00	20 - .138	29.50	16	112	23.50	31.88	27.05	25.94	21.75	16 - .88	30.00	30.00	4	75

ECO 1244120

ECO 1264657 1.25 WAS 1.12 6711 WAS 6706 ECM 7/30/02

ECO 1265481 200WP-400 TEST FOR 24" VALVE CAP 08/09/02

ECO 1292931 8.50 WAS 17.00 9.00 WAS 18.00 10.00 WAS 20.00 CAP 07/28/05

ECO 1352438 CHANGED # OF "P" FOR CLARIFICATION OF CAP 07/28/05

ECO 1367411 CHANGED LETTERING TO CONFORM WITH "L" LIKE DRAWINGS REQUESTED PER SALES DEPT SEE OBSOLETE DRAWINGS 670/6705 AND CURRENT 6743 FOR LETTERING SCHEM CAP 11/14/05

ECO 1405798 CHANGED O-RING AND DISC MATERIAL TO EPDM CORRECTED: 1.78 WAS 1.25, 1.05 WAS 1.06, 1.60 WAS 1.12, 21.74 WAS 21.75, 33.75 WAS 33.00 ADDED NOTES WBE 10/11/06

ECO 1456392 ADDED MANUFACTURER'S NOTE ADDED DETAIL VIEW & ITEM 21 CAP 12/11/07

ECO 1481707 ADDED 16 IN. DIMENSIONS ADDED NOTE 5 MCB 8/19/08

ECO 1501991 REMOVED TEXT "SIZES 24" AND GREATER" NAF 4/17/09

ECO 1698981 1.05 WAS 1.69 1.25 WAS 2.00 AD 6/3/15

APPROVED
By Matt Sutterfield at 9:31 am, Jun 04, 2015

SR BY: JLC	8/3/01	UNLESS OTHERWISE NOTED	THIRD ANGLE PROJECTION	C.D. NO.
CHKD: TRJ	8/6/01	BREAK CAST CORNERS!		
ENGR: RWV	8/7/01	BREAK MACH CORNERS!		
MGR:			PURCH: NO	FINISH: ASSY
MFG:			REF. NO.	SCALE: NONE
TOOL:		UNLESS OTHERWISE NOTED	ANGULAR	STR. NO.
FBY:		LINEAR		
MAT'L:				
NOTED				
16"-24" RWGV'S ALL END CONFIGURATIONS				
Mueller Co.				NUMBER 6711