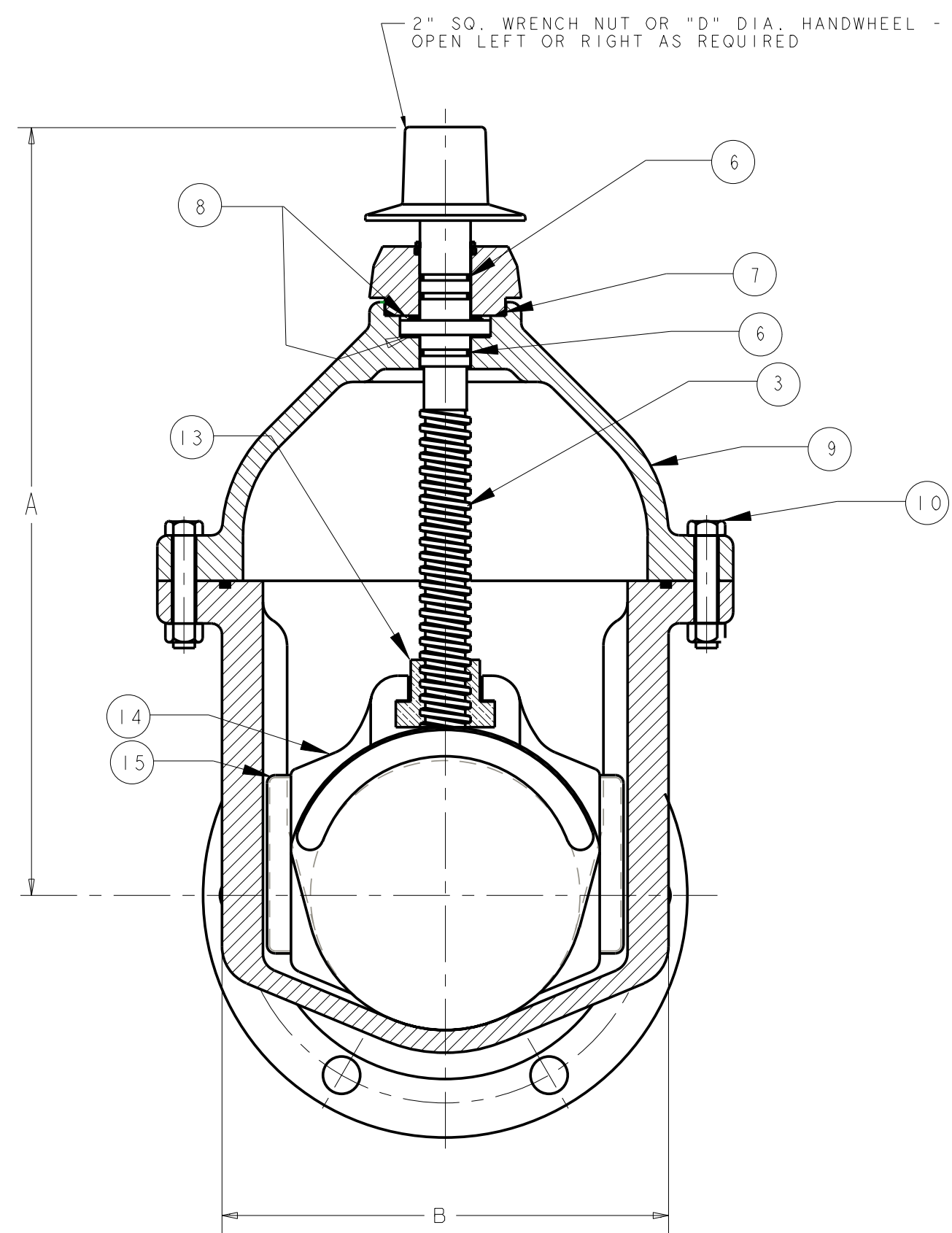
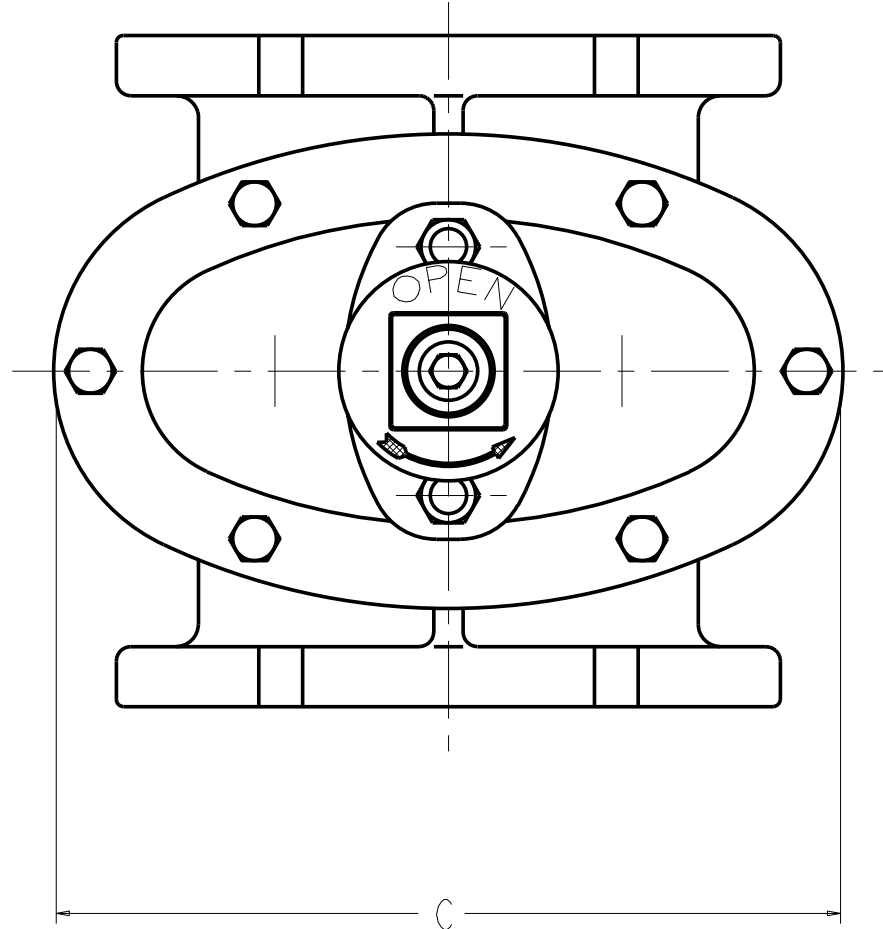
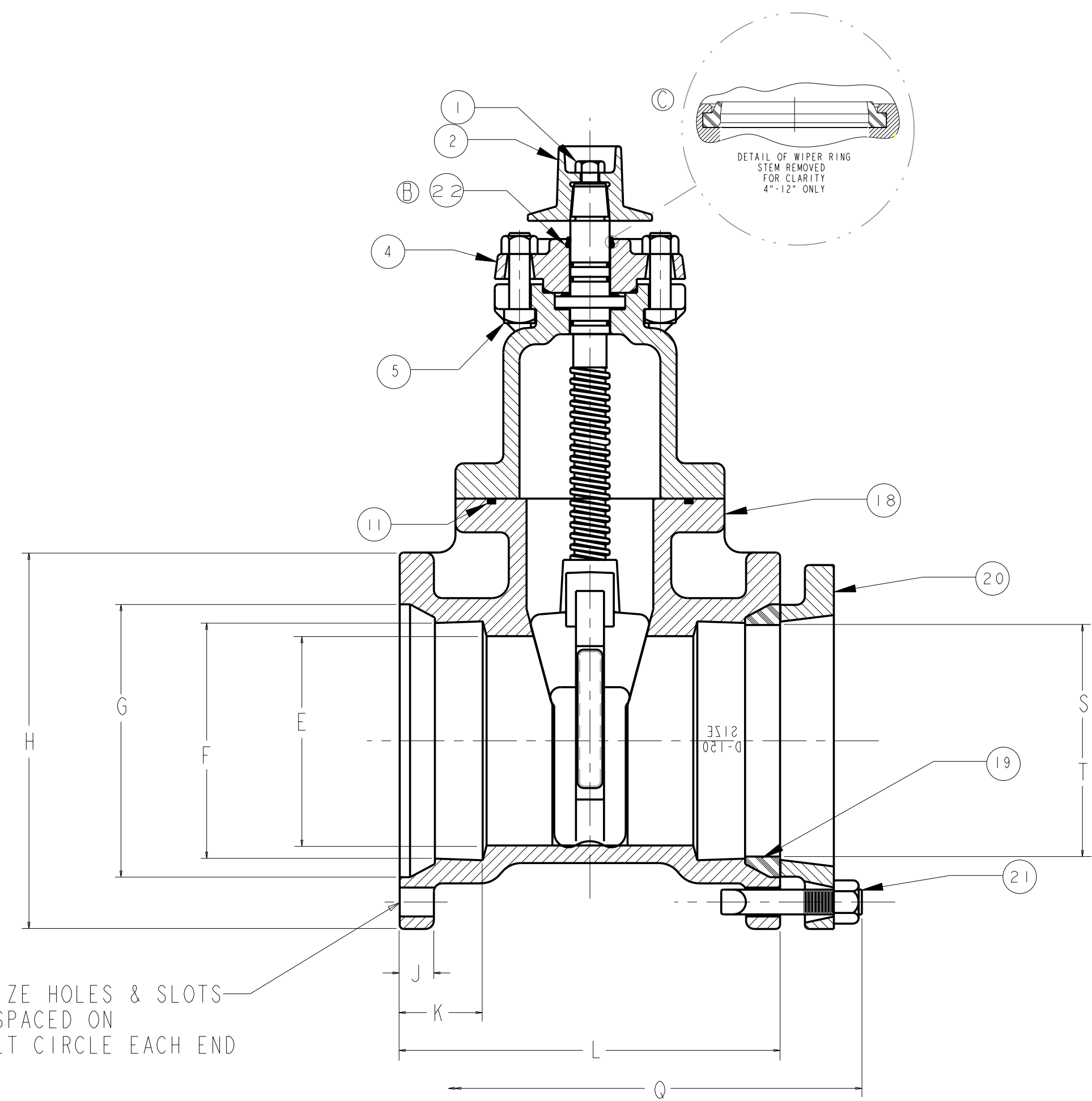


4 IN - 8 IN MUELLER C-2362-42 RESILIENT WEDGE CUT-IN VALVE LESS ACCESSORIES
 NRS - AWWA - 250W - 500 TEST
 UL/FM - 200W - 400 TEST
 CATALOG NO. C-2362-44 W/DUCK TIPPED GASKETS
 CATALOG NO. C-2362-45 W/PLAIN END GASKETS



2" SQ. WRENCH NUT OR "D" DIA. HANDWHEEL - ITEM NO. 17
 OPEN LEFT OR RIGHT AS REQUIRED



N - NO. & SIZE HOLES & SLOTS
 EQUALLY SPACED ON
 P - DIA. BOLT CIRCLE EACH END

PART LIST						
ITEM	DESCRIPTION	REQ'D	MATERIAL	ASTM		
1	CAP SCREW (A)	1	304 STAINLESS STEEL	A193	GRADE B8	
2	WRENCH NUT	1	CAST IRON [SEE NOTE 2] (E)	A126	CLASS B	
3	STEM	1	BRONZE	B138	ALLOY C67600	
4	STUFFING BOX	1	CAST IRON [SEE NOTE 2] (E)	A126	CLASS B	
5	STUFFING BOX BOLT STUFFING BOX NUT (A)	2	304 STAINLESS STEEL 304 STAINLESS STEEL	A193 F594	GRADE B8 GROUP 1	
6	O-RING	3	RUBBER	D2000	R34 (E)	
7	O-RING	1	RUBBER	D2000	R34 (E)	
8	ANTI-FRICTION WASHER	2	CELCON		M90 (E)	
9	BONNET	1	DUCTILE IRON (E)	A536	65-45-12 (E)	
10	BONNET BOLT BONNET NUT (A)	"M"	304 STAINLESS STEEL 304 STAINLESS STEEL	A193 F594	GRADE B8 GROUP 1	
11	O-RING	1	RUBBER	D2000	R34 (E)	
13	DISC NUT	1	BRONZE	B62	ALLOY C83600	
14	DISC	1	SEE NOTES 1 & 2 (E)			
15	GUIDE CAP	2	CELCON		M90 (E)	
17	HANDWHEEL	1	CAST IRON [SEE NOTE 2] (E)	A126	CLASS B	
18	BODY	1	DUCTILE IRON (E)	A536	65-45-12 (E)	
19	MECH. JOINT GASKET	2	RUBBER	D2000	R42 (E)	
20	PIPE GLAND	2	CAST IRON	A126	CLASS B	
21	TEE HEAD BOLT & NUT	"R"	STEEL	A242	TYPE 1	
22	WIPER RING (E)	1	RUBBER			

(E) (D) NOTES:
 1. RUBBER ENCAPSULATED CAST IRON DISC
 CAST IRON - ASTM A126 - CLASS B
 RUBBER - SBR - ATM D2000
 2. MANUFACTURER'S OPTION TO UPGRADE MAT'L
 TO DI - A536 GR 65-45-12
 ITEMS NOS. 19, 20 & 21 AND LETTERS "Q" - "T"
 PERTAIN TO CATALOG NOS. C02362-44 & 45 ONLY

S - DUCK TIPPED GASKET
 - PLAIN END GASKET

DIMENSIONS FOR RESILIENT WEDGE VALVE - INCHES (this drawing only)

VALVE SIZE	A	B	C	D	E	F	G	H	J	K	L	M	N	P	Q	R	S	(D) T	TURNS TO OPEN
4	14.19	(D)8.25	(D)10.79	11.00	4.30	(D)5.12	6.27	(D)9.38	(D)0.94	2.50	(D)9.97	4	4	7.75	15.00	8	4.73	4.93	14
6	18.00	10.50	13.50	13.00	6.30	(D)7.22	8.37	(D)11.38	(D)1.03	2.50	11.50	6	6	9.75	16.50	12	6.80	7.00	20.5
8	21.50	(D)13.21	(D)16.36	14.00	8.30	(D)9.42	10.58	(D)13.75	1.12	2.50	(D)12.56	6	6	12.13	18.50	12	8.95	9.16	26.5

(A) ECO 1343785
 CHANGED TO STAINLESS
 STEEL BOLTS/NUTS
 WERE ZINC COATED STEEL
 CAP 04/07/05

(B) ECO 1345617
 ADDED ITEM 22
 WIPER RING
 CAP 05/03/05

(C) ECO 1381327
 8.25 WAS 8.19
 13.21 WAS 13.12
 10.79 WAS 10.81
 16.36 WAS 16.38
 5.12 WAS 5.17
 7.22 WAS 7.27

(D) 9.42 WAS 9.47
 9.38 WAS 9.44
 11.38 WAS 11.44
 13.75 WAS 13.81
 0.94 WAS 1.00
 1.03 WAS 1.06
 9.97 WAS 10.00

(E) ECO 1388692
 DUCTILE IRON A536 64-45-12
 WAS CAST IRON A126 CLASS B
 ADDED M90, R42 WAS MUELLER R42
 R34 WAS NITRILE
 2362 WAS 2360
 CAP 04/17/06

(F) ECO 1452367
 ADDED MANUFACTURER'S OPTION
 ADDED NOTE 2
 MCB 11/11/07

APPROVED
 By CHAD POOLE at 6:09 pm, Nov 18, 2007

MUELLER CONFIDENTIAL
 Title to and ownership of this engineering data
 remains in Mueller Co. No use is to be made
 of this data except as specifically authorized
 by Mueller Co. Assent on the part of recipients
 to these conditions is presumed.

SR BY: JLC	10/02/01	UNLESS OTHERWISE NOTED	THIRD ANGLE PROJECTION	C.D. NO.
CHNG: TRJ	10/02/01	BREAK CAST CORNERS!		PART. NO.
ENGR: RWV	10/02/01	BREAK MACH CORNERS!		
MFR:		TOLERANCES	PURCH. NO.	FINISH SCALE
MFG:		UNLESS OTHERWISE NOTED	REF. NO.	SCALE
TOOL:		LINER ±	ANGULAR ±	NONE
DRY:			STR. NO.	
NOTE				
MATERIAL		DESCRIPTION		NUMBER
Mueller Co.		4"-8" RWGV C-2362-42 (E)		6714

6714