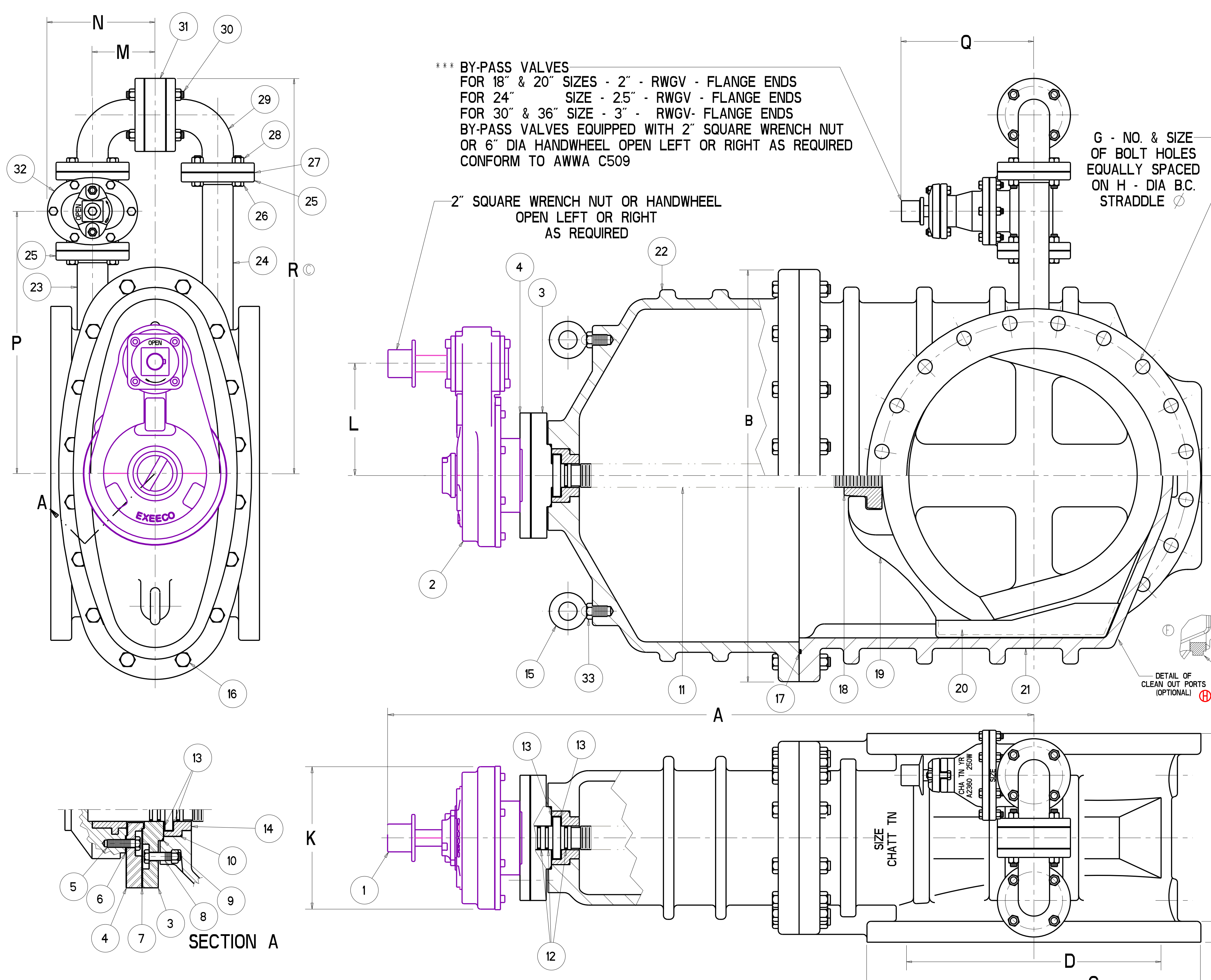
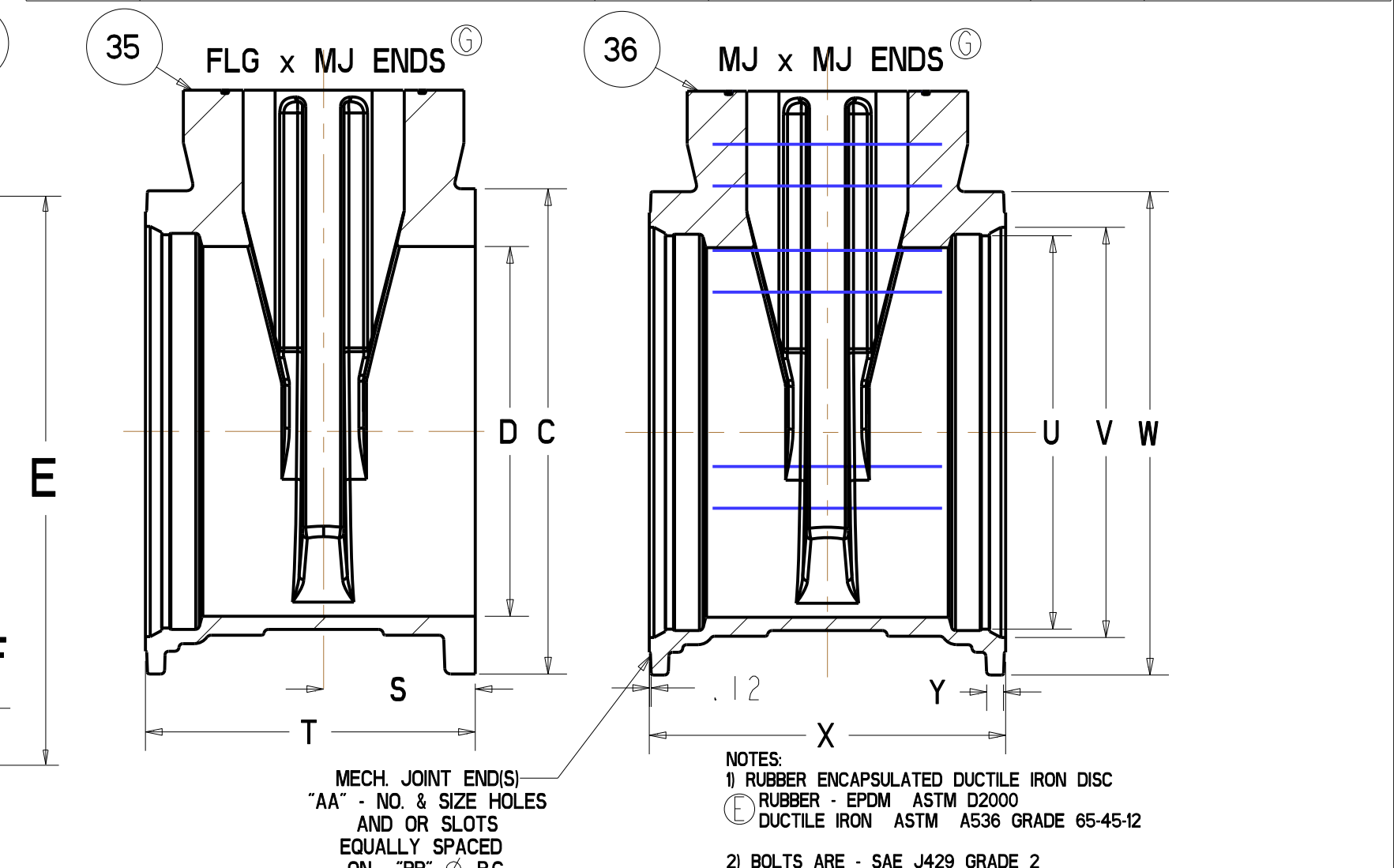


AWWA C515 18" - 36" A2361 RESILIENT WEDGE GATE VALVES - W/ROTORK SPUR GEARING - W/ SIDE BY-PASS



PARTS LIST					
ITEM	DESCRIPTION	REQ'D	MATERIAL	ASTM	
1	WRENCH NUT	1	CAST IRON (SEE NOTE 4)	A126	CLASS B
2	ROTORK SPUR GEAR IS-5	1	CAST IRON	A48	35B/40B
3	STUFFING BOX	1	HOT ROLLED STEEL	A36	
4	ADAPTER PLATE	1	HOT ROLLED STEEL	A36	
5	SOCKET HEAD SCREW	4	STEEL		SEE NOTE 2
6	GASKET	1	RUBBER	D2000	R51
7	O-RING	1	RUBBER	D2000	EPDM
8	SOCKET HEAD BOLT & NUT	4	STEEL		SEE NOTE 2
9	O-RING	1	RUBBER	D2000	EPDM
10	O-RING	1	RUBBER	D2000	EPDM
11	STEM	1	BRONZE		SEE NOTE 3
12	O-RING	3	RUBBER	D2000	EPDM
13	ANTI-FRICTION WASHER	2	BRASS		
14	BONNET BUSHING	1	BRONZE	B62	ALLOY C83600
15	EYE BOLT	2	STEEL		GALVANIZED
16	HEX BOLT & NUT	"J"	STEEL		SEE NOTE 2
17	O-RING	1	RUBBER	D2000	EPDM
18	DISC NUT	1	BRONZE	B62	ALLOY C83600
19	DISC ENCAPSULATED	1			SEE NOTE 1
20	GUIDE CAP	2	CELCON		M90
21	BODY	1	DUCTILE IRON	A536	GR 65-45-12
22	BONNET	1	DUCTILE IRON	A536	GR 65-45-12
23	SHORT NIPPLE	1	STEEL PIPE		
24	LONG NIPPLE	1	STEEL PIPE		
25	PIPE FLANGE	2	STEEL		
26	HEX BOLT	12	STEEL		SEE NOTE 2
27	PIPE GASKET	5	REINFORCED NEOPRENE	D2000	
28	HEX NUT	20	STEEL		SEE NOTE 2
29	PIPE ELBOW	2	CAST STEEL		
30	STUD	4	STEEL		SEE NOTE 2
31	SPACER	1	STEEL		
32	BY-PASS VALVE	1	***		
33	HEX NUT	2	STEEL	A136	
34	PIPE PLUG	2	SUPPLIED WHEN TAPPED		
35	BODY - FLG X MJ ENDS	1	DUCTILE IRON	A536	GR 65-45-12
36	BODY - MJ X MJ ENDS	1	DUCTILE IRON	A536	GR 65-45-12



VALVE SIZE	A	B	C	D	E	F	G	H	J	K	L	M	N	P	Q	R	S	T	U	V	W	X	Y	AA	BB	URNS TO OPEN 18"-36" RATIO 4:1:1	HANDWHEEL DIAMETER
18	49.64	30.50	25.00	18.38	17.00	169	16 - 1.25	22.75	12	10.24	8.00	5.00	8.50	21.50	9.88	32.50	8.50	19.00	19.64	20.74	24.88	21.00	1.06	12 - .88	23.25	234	18.00
20	52.75	33.75	27.50	20.38	18.00	178	20 - 1.25	25.00	12	10.24	8.00	5.00	8.50	22.50	9.88	33.50	9.00	19.75	21.74	22.84	27.25	21.50	1.60	14 - .88	25.50	258	18.00
24	59.15	39.50	32.00	24.38	20.00	2.00	20 - 1.38	29.50	16	10.24	8.00	6.00	10.31	25.06	12.38	37.31	10.00	21.75	25.94	27.05	31.88	23.50	1.12	16 - .88	30.00	308	18.00
30	70.83	48.00	38.75	30.38	26.00	2.12	28 - 1.38	36.00	20	10.24	8.00	7.08	11.67	27.70	12.38	43.20	13.00	29.75	32.18	33.47	39.53	33.50	1.25	20 - 1.125	36.88	381	18.00
36	83.14	56.50	46.00	36.38	30.00	2.37	32 - 1.63	42.75	24	10.24	8.00	8.75	13.40	31.75	12.38	47.25	15.00	33.75	38.48	39.77	46.41	37.50	1.45	24 - 1.125	43.75	455	24.00

ECO 1341798  
 ECO 1343427  
 ECO 1369985  
 ECO 1383349  
 ECO 1385117  
 ECO 1404656  
 ECO 1453589  
 ECO 1479341  
 ECO 1511857  
 CAP 04/04/05  
 CAP 11/17/05  
 CAP 03/10/05  
 CAP 03/11/05  
 CAP 03/11/05  
 CAP 02/21/06  
 CAP 03/08/06  
 CAP 09/29/06  
 CAP 11/12/07

ADDED "REINFORCED NEOPRENE"  
 CHANGED NOTE 3 TO CORRECT ALLOY MATERIALS  
 ADDED R51  
 ADDED R34  
 ADDED ALLOY 83600

ADDED "REINFORCED NEOPRENE"  
 TO TABLE CHANGED D.I.A. AND O-RING MATERIAL TO EPDM  
 1.66 WAS 1.69  
 83.14 WAS 83.08  
 CAP 03/08/06

ADDED HANDWHEEL D.I.A. TO TABLE CHANGED DISC AND O-RING MATERIAL TO EPDM  
 49.64 WAS 49.41  
 52.75 WAS 53.01  
 70.83 WAS 70.85  
 1.69 WAS 1.66  
 KWE 09/29/06

ADDED NOTE 4  
 372 WAS 381  
 444 WAS 455  
 ADDED ITEM 34  
 ADDED DETAIL VIEW CAP 11/12/07

ADDED MJ/MJ AND FL/MJ END CONFIGURATIONS  
 MCB 07/25/08

REMOVED NOTE "SIZES 24" AND LARGER"  
 H.D 7/28/09

**APPROVED**  
 By Nicholas Franklin at 3:19 pm, Aug 18, 2009

SR BY	CAP	03/10/05	UNLESS OTHERWISE NOTED	THIRD ANGLE PROJECTION	C.D. NO.
CHNG	PSG	03/11/05	BREAK CAST CORNERS!		PART. NO.
ENGR	RWV	03/11/05	BREAK MACH CORNERS!		
MFG			TOLERANCES	NO	ASSY
FIN			UNLESS OTHERWISE NOTED	REF. NO.	FINISH
TOOL			LINEAR	±	NONE
FBRY			ANGULAR	±	
MAT. L			NOTED		
Mueller Co.			AWWA C515 18"-36" A2361 RWGV'S W/ROTORK SPUR GEAR		
6750			6750		