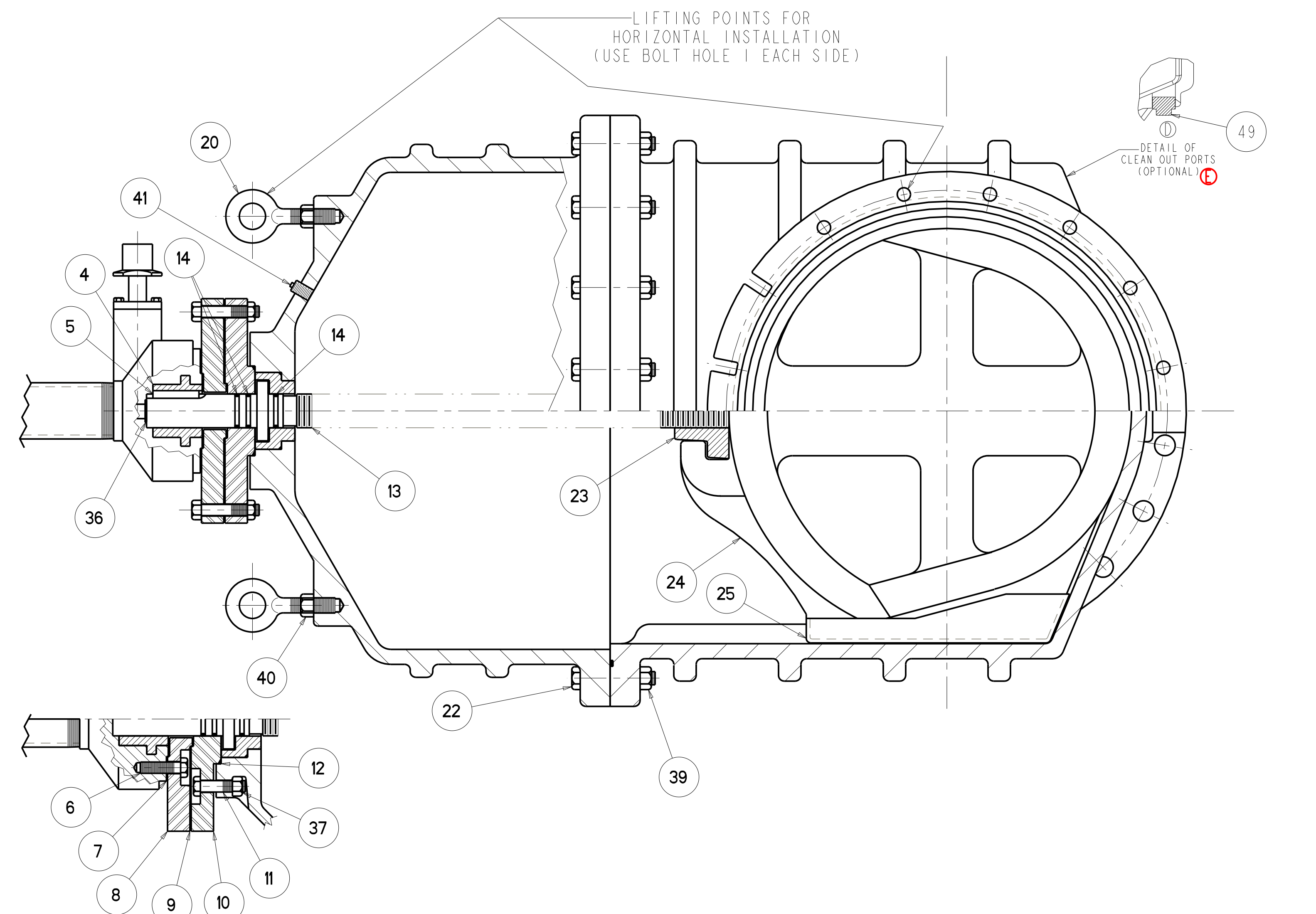
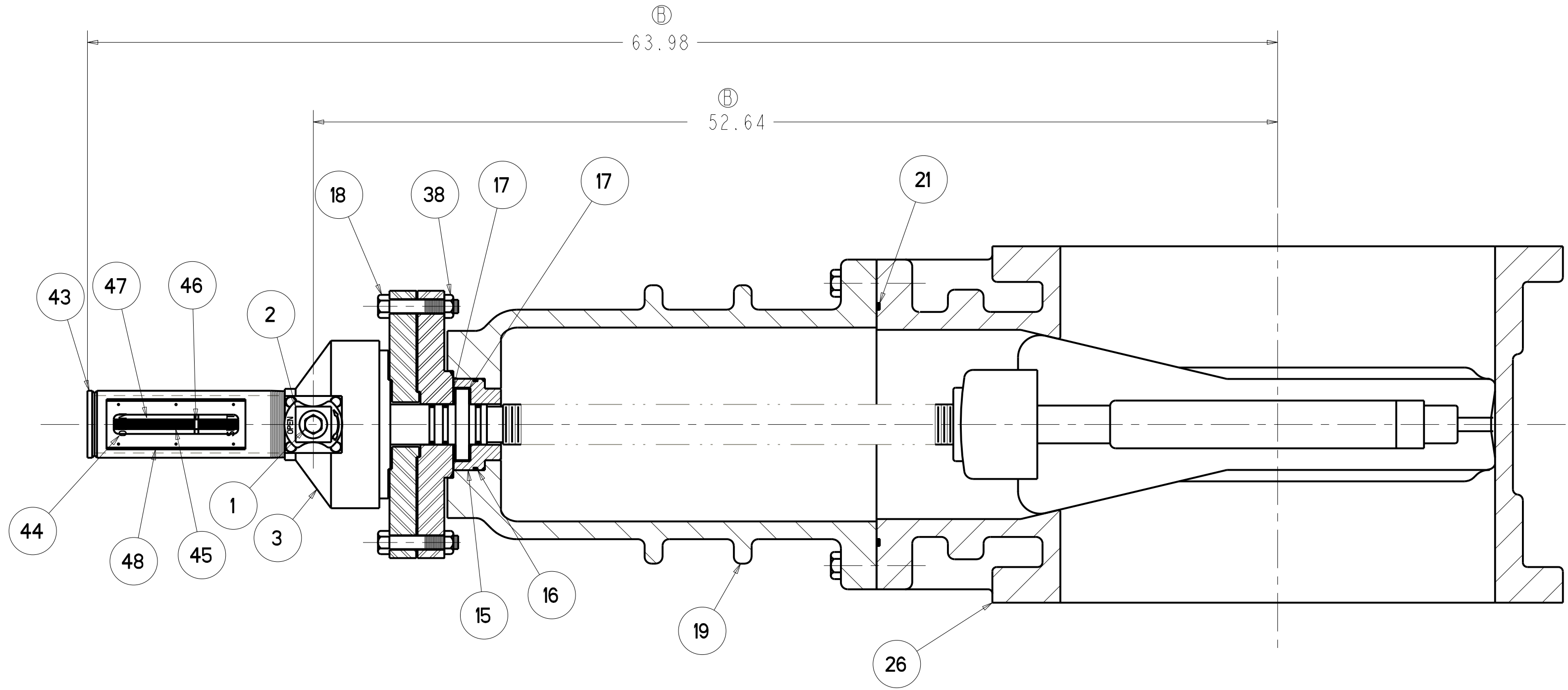


24" RWGV FLANGE ENDS - W/BEVEL GEARING - WITH POSITION INDICATOR



SECTION A



PARTS LIST - 240A236106LN102

ITEM	DESCRIPTION	REQ'D	MATERIAL	ASTM	NOTES
1	CAP SCREW 8mm X 30mm	1	STEEL		SEE NOTE 3 (C)
2	WRENCH NUT	1	CAST IRON (SEE NOTE 4)	A126	CLASS B
3	BEVEL GEAR UNIT	1	SEE NOTE 5		
4	STEM NUT	1	BRASS		
5	KEY 1/2" X 3 1/2"	1	STEEL	A108	GRADE 1018
6	SOCKET HEAD SCREW 5/8" X 1 3/4"	4	STEEL		SEE NOTE 3 (C)
7	GASKET	1	RUBBER	D2000	R51 (B)
8	ADAPTER	1	STEEL	A36	
9	O-RING 4 1/8" x 4 3/8" x 1/8" #243	1	RUBBER	D2000	EPDM (B) (C)
10	STUFFING BOX W/ SPUR GEARING	1	STEEL	A36	
11	SOCKET HEAD BOLT 3/4" X 2 3/4"	4	STEEL		SEE NOTE 3 (C)
12	O-RING 5 5/8" X 6" X 3/16" #358	1	RUBBER	D2000	EPDM (C)
13	STEM	1	BRONZE	B584	C86400 OR C86500
14	O-RING 2 1/4" X 1 7/8" X 3/16" #328 (B)	3	RUBBER	D2000	EPDM (B) (C)
15	BONNET BUSHING	1	BRONZE	B62	
16	O-RING 4 7/8" X 5 1/8" X 1/8" #249	1	RUBBER	D2000	EPDM (B) (C)
17	WASHER	2	BRASS		
18	HEX BOLT 3/4" X 4"	4	STEEL	J429	SEE NOTE 3 (C)
19	BONNET	1	DUCTILE IRON	A536	GR. 65-45-12
20	EYEBOLT 1.00" (B)	2	STEEL		GALVANIZED
21	O-RING	1	RUBBER	D2000	EPDM (B) (C)
22	HEX BOLT 7/8" X 5 1/2" (B)	16	STEEL		SEE NOTE 3 (C)
23	DISC NUT	1	BRONZE	B62	
24	DISC	1			SEE NOTE 1 (B)
25	GUIDE CAP	2	CELCON		M90
26	BODY	1	DUCTILE IRON	A536	GR. 65-45-12
36	HOLD-DOWN WASHER 5/8"	1	STEEL	A164	TYPE B (B)
37	HEAVY HEX NUT 3/4" (B)	4	STEEL		SEE NOTE 3 (C)
38	HEX NUT 3/4"	4	STEEL		SEE NOTE 3 (C)
39	HEX NUT 7/8" (B)	16	STEEL		SEE NOTE 3 (C)
40	HEAVY HEX NUT 1.00" (B)	2	STEEL		SEE NOTE 3 (C)
41	SQUARE HEAD PIPE PLUG 1/4" - 18 NPT	1	304 STAINLESS STEEL (B)	A193	GRADE B8 (B)
42	84 X 40 PALLET	1	WOOD		NOT SHOWN
43	HOUSING SUB ASSEMBLY	1	STEEL		
44	DECAL FOR POSITION INDICATOR	1			
45	INDICATING STEM 36" RWGV OL	1	BRONZE		
46	POINTER POSITION INDICATOR OL	1	BRONZE		
47	WINDOW	1	PLEXIGLASS OR LEXAN		
48	WINDOW GASKET	1	RUBBER	(B) D200	
49	PIPE PLUG	2			SUPPLIED WHEN TAPPED

- NOTES:
- 1) RUBBER ENCAPSULATED DUCTILE IRON DISC
 - (C) RUBBER - EPDM ASTM D2000
DUCTILE IRON ASTM A536 GRADE 65-45-12
 - 2) NUMBER OF TURNS TO FULLY CLOSED/OPEN 338 (A)
 - (C) 3) BOLTS - SAE J429 GRADE 2
NUTS - ASTM A563 GRADE B
FASTENERS - PLATED TO ASTM F1941 CLASS Fe/Zn 12C
 - (B) 4) MANUFACTURER'S OPTION TO UPGRADE MATERIAL TO DUCTILE IRON A536 GRADE 65-45-12
 - (B) 5) VALVE WILL BE FURNISHED WITH ONE OF THE LISTED OPERATORS AT THE MANUFACTURER'S DISCRETION. MASTERGEAR A13, RATIO 4.5:1, TURNS TO OPEN 338 ROTORK HOB414, RATIO 4:1, TURNS TO OPEN 300

ECO 1383242 63.98 WAS 66.76 52.64 WAS 53.58 ADDED R51 ADDED R34 TYPE B WAS TYPE RS GRADE B8 WAS GRADE 2	304 STAINLESS STEEL WAS STEEL A139 WAS J429 ADDED D2000 3/4 X 2 3/4 WAS 7/8 X 4 1/4 2 1/4 X 1 7/8 X 3/16 #328 WAS NOTE 1 WAS NOTE 2 2 3/8 X 2 3/4 X 3/16 #332 7/8 X 5 1/2 WAS 1 X 7 1/2	3/4 WAS 7/8 7/8 WAS 1 1.00 WAS 1 1/4 1.00 WAS 1 1/4 ADDED NOTE REMOVED PRESSURE RATING KWE 10/20/06	ECO 1406951 CHANGED O-RING AND DISC MATERIAL TO EPDM ADDED NOTE REMOVED PRESSURE RATING KWE 10/20/06	ECO 1458144 ADDED NOTES 4 & 5 ADDED DETAIL VIEW ADDED ITEM 49 CAP 02/20/08	ECO 1511777 REMOVED NOTE 'SIZES 24" AND LARGER' H D 7/28/09
---------------------------------------------------------------------------------------------------------------------------	--------------------------------------------------------------------------------------------------------------------------------------------------------------------------------------------------------------	-----------------------------------------------------------------------------------------------------------------------	------------------------------------------------------------------------------------------------------------------------	----------------------------------------------------------------------------------------	-------------------------------------------------------------------------

APPROVED
By Nicholas Franklin at 3:19 pm, Aug 18, 2009

SR BY: CAP	03/02/05	UNLESS OTHERWISE NOTED	THIRD ANGLE PROJECTION	C. D. NO.
CHKD: PSG	03/02/05	BREAK CAST CORNERS!		PART. NO.
ENGR: RWV	03/02/05	BREAK MACH CORNERS!		
MFR:		TOLERANCES	PURCH: NO	FINISH: ASSY
MFG:		UNLESS OTHERWISE NOTED	REF. NO.	SCALE: NONE
TOOL:		LINEAR	ANGULAR	STR. NO.
FBY:		±	±	
MATERIAL: NOTED				
DESCR: 24" FLANGE ENDS RWGV W/BEVEL GEARING & POSITION INDICATOR WITHOUT BTM BY-PASS				
				NUMBER: 6755