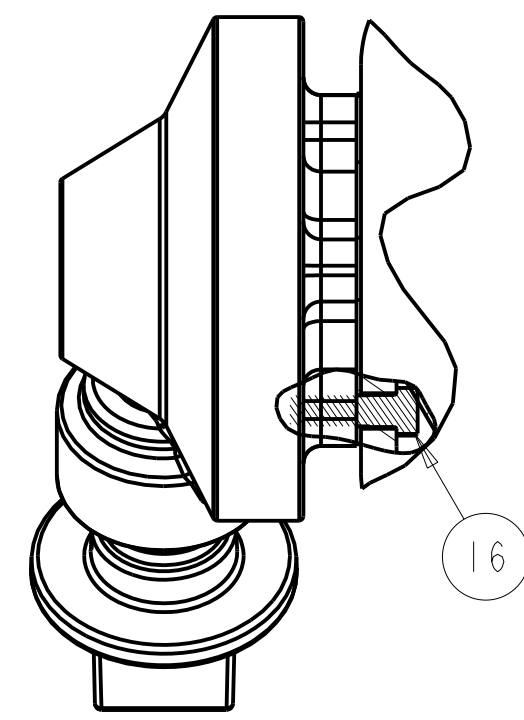
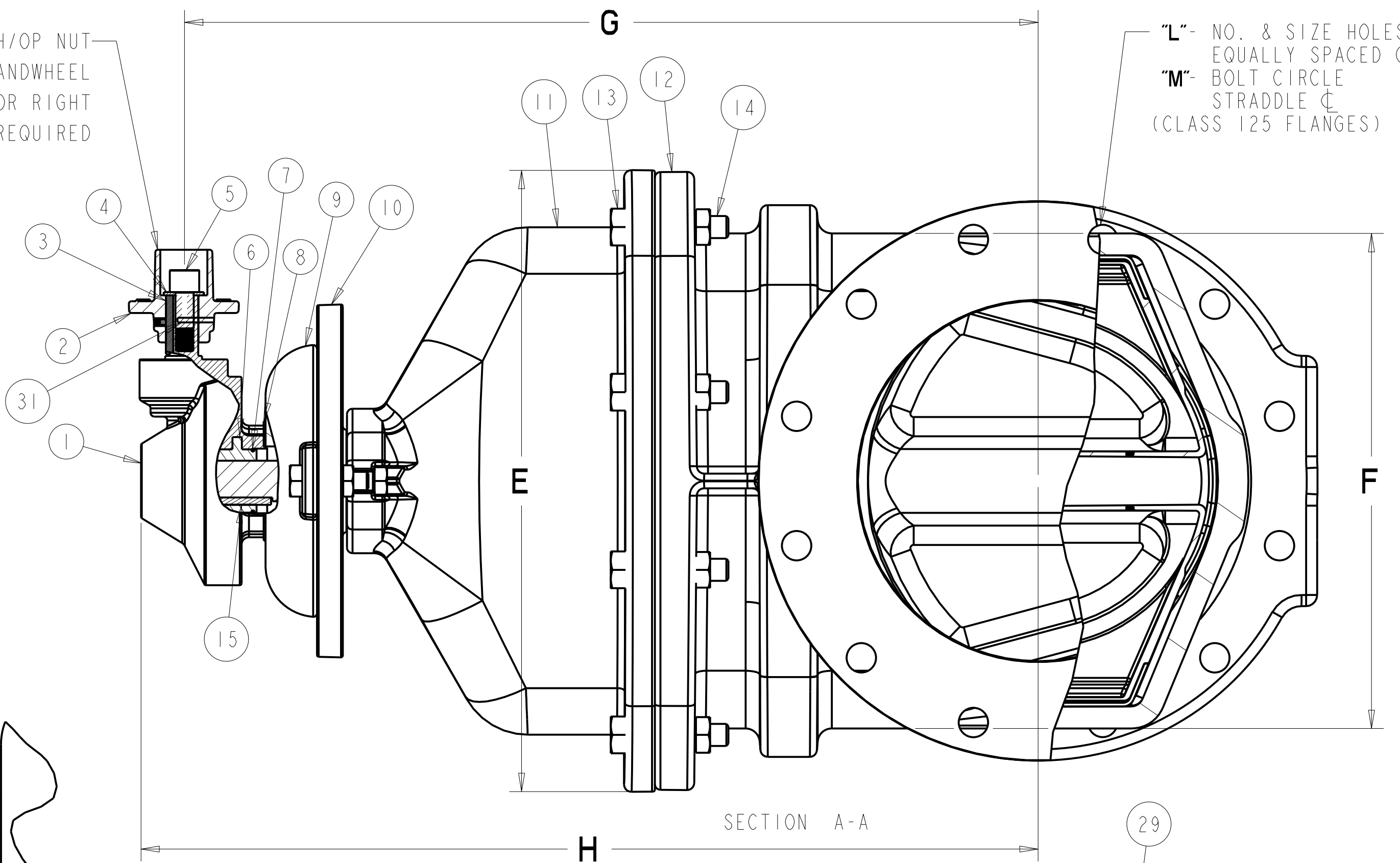
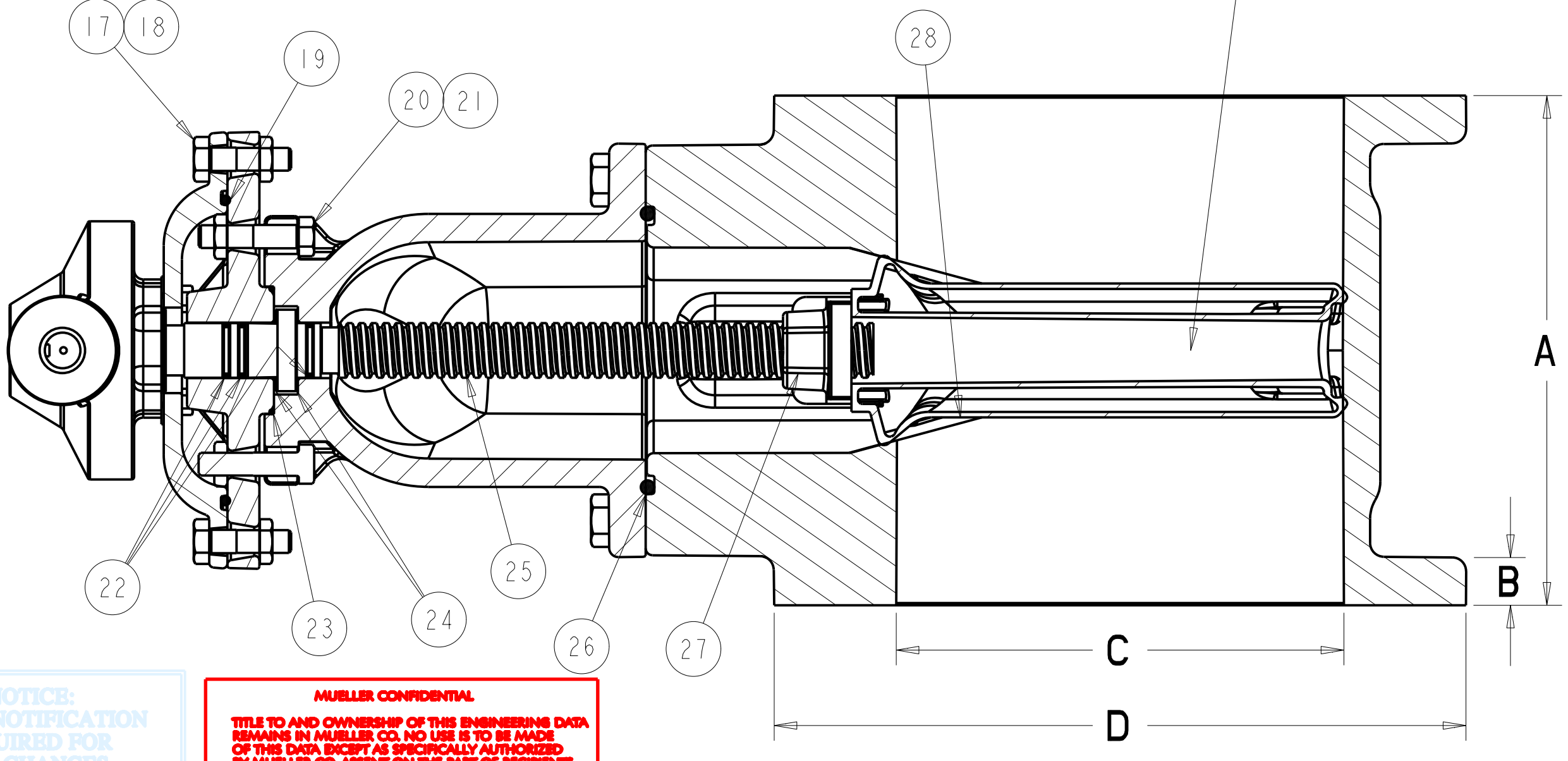


ITEM	DESCRIPTION	REQ'D	MATERIAL	ASTM	
1	BEVEL GEAR (SEE NOTE 3)	1	CAST IRON		
2	WRENCH/OP NUT	1	CAST IRON [SEE NOTE 2]	A126	CLASS B
3	KEY	1	STEEL		
4	HOLD DOWN WASHER	1	STEEL		
5	HEX. SOC. SCREW	1	STEEL		
6	GEAR STEM NUT	1	STEEL		
7	O-RING	1	RUBBER	D2000	
8	GEAR GASKET	1	RUBBER	D2000	
9	ADAPTER	1	CAST IRON [SEE NOTE 2]	A126	CLASS B
10	STUFFING BOX	1	CAST IRON [SEE NOTE 2]	A126	CLASS B
11	BONNET	1	DUCTILE IRON	A536	65-45-12
12	BODY	1	DUCTILE IRON	A536	65-45-12
13	BONNET BOLT	"P"	304 STAINLESS STEEL	F593	GROUP 1-CW (A)
14	BONNET BOLT NUT	"P"	304 STAINLESS STEEL	F594	GROUP 1-CW (A)
15	KEY	1	STEEL		
16	CAP SCREW	4	304 STAINLESS STEEL	F593	GROUP 1-CW (A)
17	ADAPTER BOLT	2	304 STAINLESS STEEL	F593	GROUP 1-CW (A)
18	ADAPTER BOLT NUT	2	304 STAINLESS STEEL	F594	GROUP 1-CW (A)
19	ADAPTER O-RING	1	EPDM RUBBER	D2000	
20	STUFFING BOX BOLT	2	304 STAINLESS STEEL	F593	GROUP 1-CW (A)
21	STUFFING BOX BOLT NUT	2	304 STAINLESS STEEL	F594	GROUP 1-CW (A)
22	STEM O-RINGS	3	EPDM RUBBER	D2000	
23	STUFFING BOX O-RING	1	EPDM RUBBER	D2000	
24	ANTI FRICTION WASHER	2	CELCON		M-90
25	STEM	1	SILICON BRONZE	B98	C66100 OR C65500 (A)
26	BONNET / BODY O-RING	1	EPDM RUBBER		
27	DISC NUT	1	BRONZE	B62	ALLOY C83600
28	DISC	1	SEE NOTES 1 & 2		
29	GUIDE CAP	2	CELCON		M-90
30	SET SCREW	1	STEEL		
31	PIN	1	STEEL		

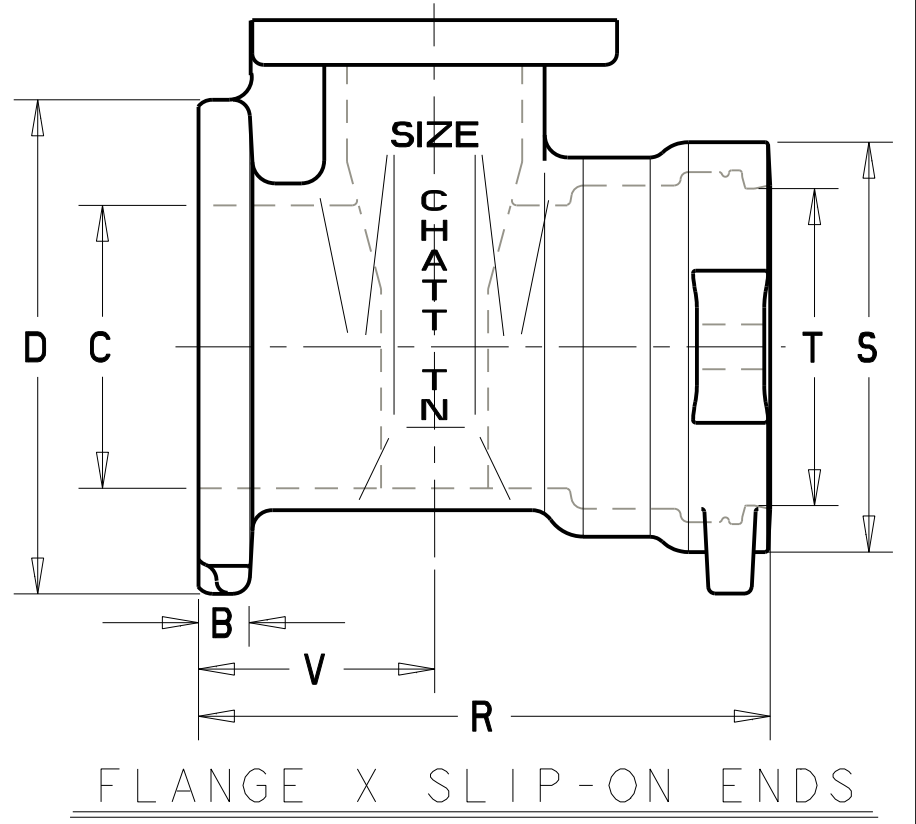
2" SQUARE WRENCH/OP NUT
OR 12.00" DIA HANDWHEEL
OPEN LEFT OR RIGHT
AS REQUIRED



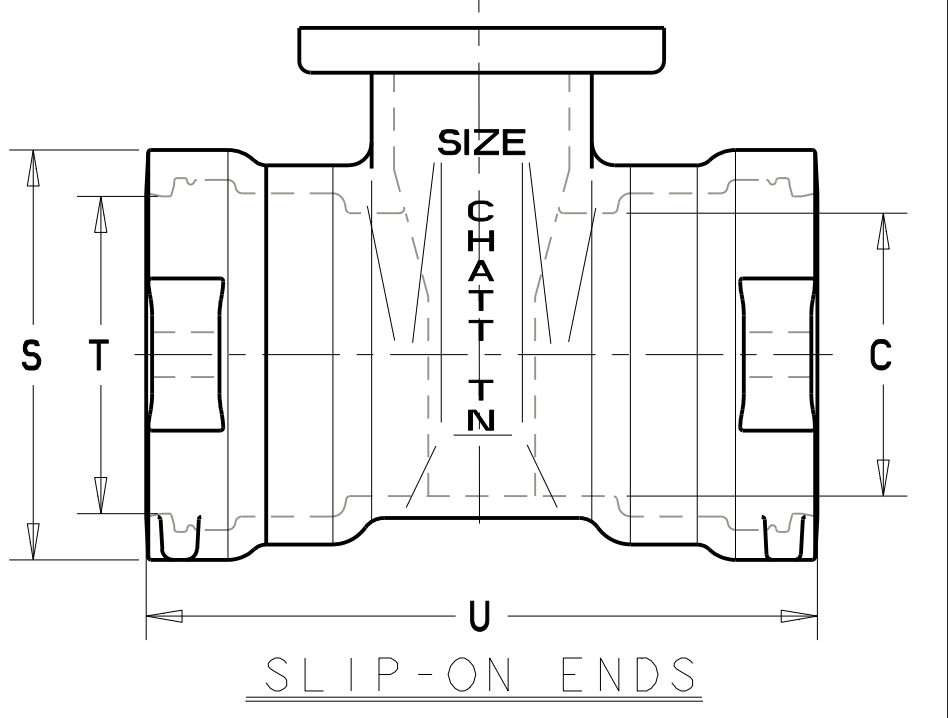
SECTION E-E



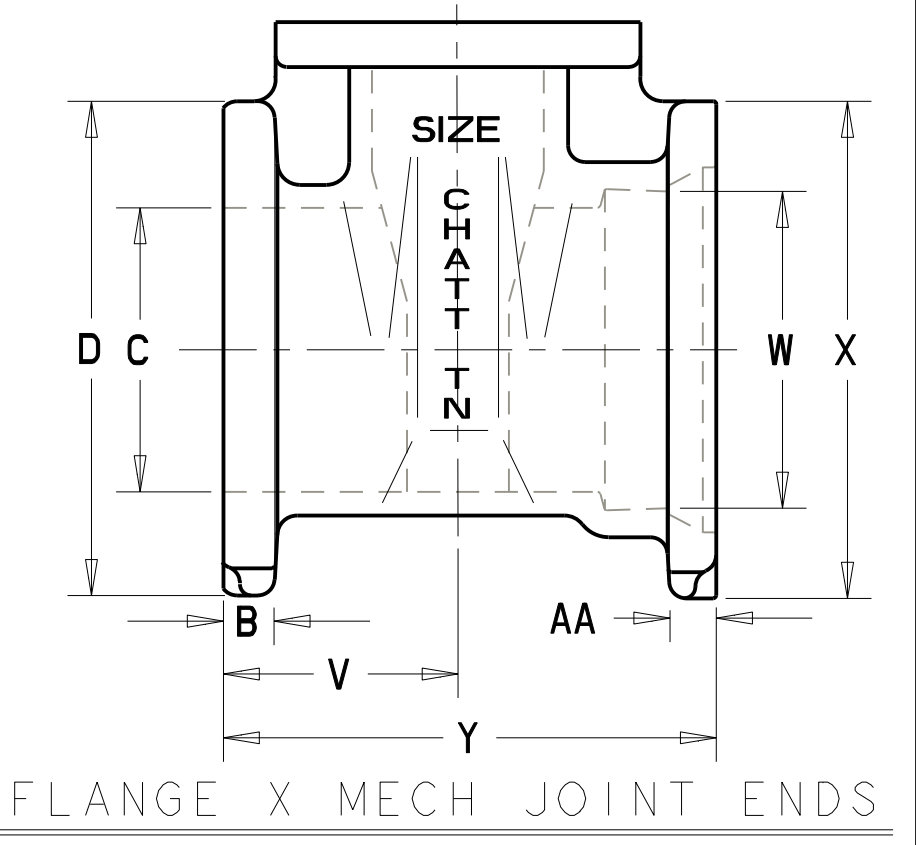
SECTION B-B
SCALE 0.300



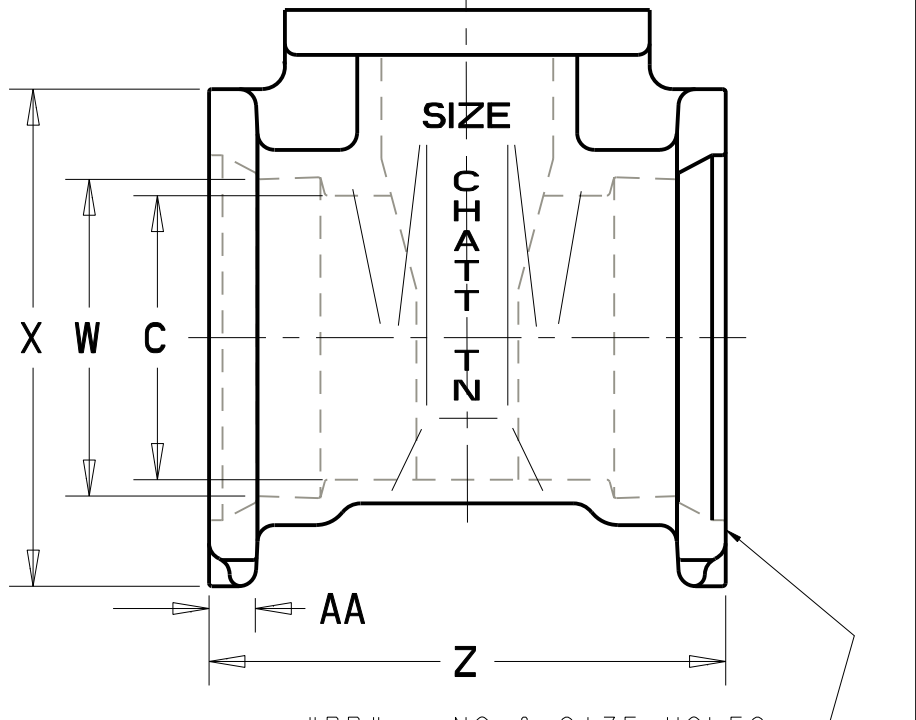
FLANGE X SLIP-ON ENDS



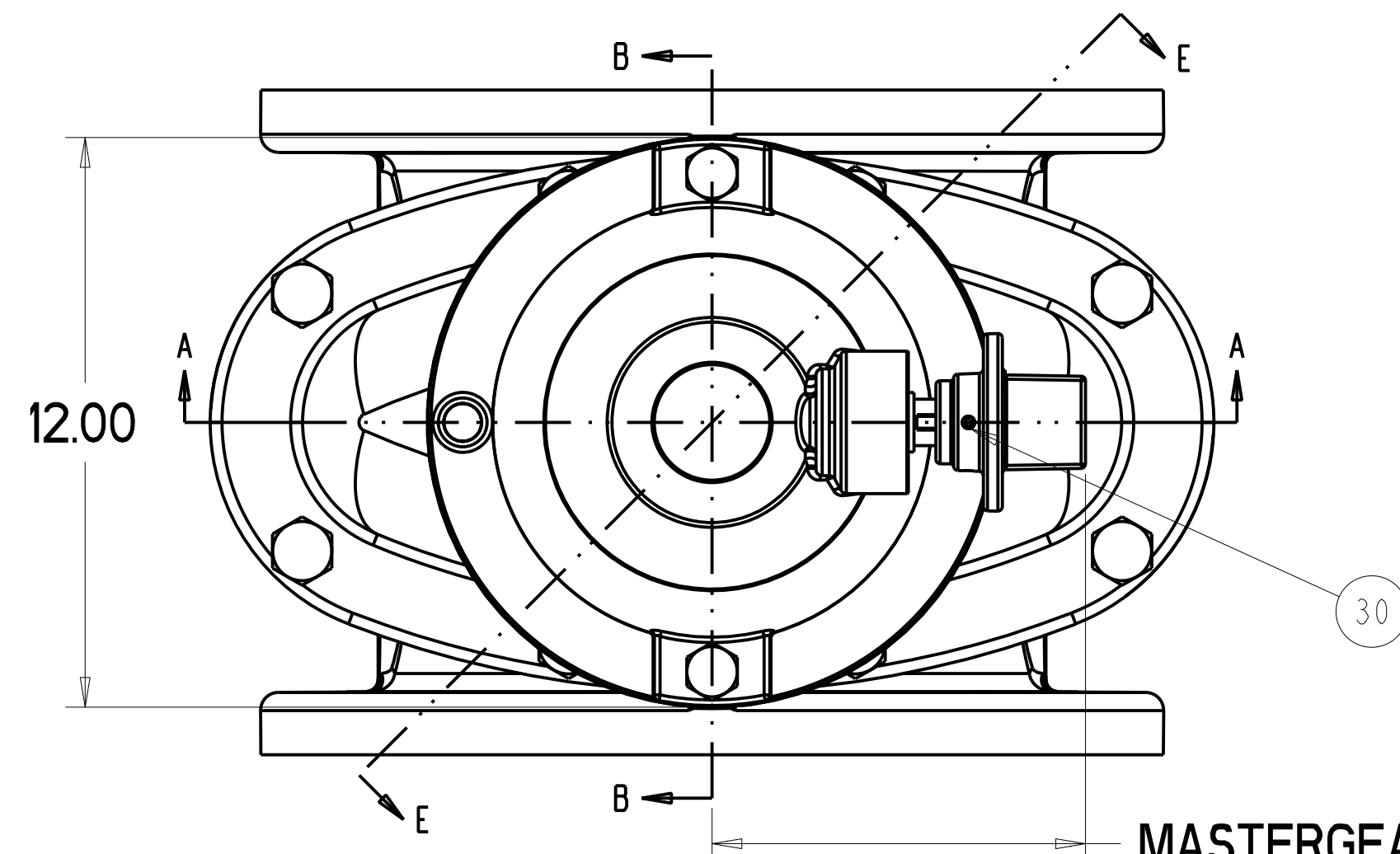
SLIP-ON ENDS



FLANGE X MECH JOINT ENDS



MECHANICAL JOINT ENDS



MASTERGEAR A03 - 7.72
ROTORK HOB210- 9.77

NOTICE:
UL/PM NOTIFICATION
REQUIRED FOR
ALL CHANGES

MUELLER CONFIDENTIAL
TITLE TO AND OWNERSHIP OF THIS ENGINEERING DATA
REMAINS IN MUELLER CO. NO USE IS TO BE MADE
OF THIS DATA EXCEPT AS SPECIFICALLY AUTHORIZED
BY MUELLER CO. ASSENT ON THE PART OF RECIPIENTS
TO THESE CONDITIONS IS PRESUMED.

SIZE	A	B	C	D	E	F	G	H	L	M	P	R	S	T	U	V	W	X	Y	Z	AA	BB	CC	URNS TO OPEN MASTERGEAR RATIO 2.31	URNS TO OPEN ROTORK RATIO 2:1
3	8.00	0.80	3.30	7.50	8.63	6.01	13.75	15.88	4 - 0.75	6.00	6	NA	NA	NA	NA	4.55	4.06	7.50	8.80	9.62	0.94	4 - 0.75	6.19	25.3	22
4	9.00	0.94	4.30	9.00	10.79	8.25	15.56	17.69	8 - 0.75	7.50	4	10.91	6.88	4.92	12.81	4.50	4.90	9.12	9.50	10.00	1.00	4 - 0.88	7.50	32	28
6	10.50	1.06	6.30	11.00	13.50	10.50	19.28	21.41	8 - .880	9.50	6	12.73	9.12	7.02	14.96	5.25	7.00	11.12	11.06	11.60	1.09	6 - 0.88	9.50	47	41
8	11.50	1.19	8.30	13.50	16.36	13.21	22.68	24.81	8 - .880	11.75	6	14.72	11.38	9.30	17.94	5.75	9.15	13.37	12.09	12.68	1.18	6 - 0.88	11.75	61	53
10	13.00	1.25	10.30	16.00	19.99	16.48	23.99	26.45	12 - 1.00	14.25	8	15.75	13.50	11.38	18.50	6.50	11.20	15.62	13.94	14.88	1.25	8 - 0.88	14.00	76	66
12	14.00	1.31	12.30	19.00	21.00	16.83	28.68	31.14	12 - 1.00	17.00	8	16.35	15.75	13.33	18.70	7.00	13.30	17.88	14.50	15.00	1.31	8 - 0.88	16.25	89	77

- NOTES:
1. RUBBER ENCAPSULATED CAST IRON DISC
CAST IRON - ASTM A126 CLASS B
RUBBER - EPDM - ASTM D2000
2. MANUFACTURER'S OPTION TO UPGRADE
MAT'L TO DI - A536 GR 65-45-12
3. VALVES WILL BE FURNISHED WITH
ONE OF THE LISTED OPERATORS AT
THE MANUFACTURER'S DISCRETION
MASTERGEAR A03 OR ROTORK HOB210.

DR BY: CAP	02/02/07	UNLESS OTHERWISE NOTED	THIRD ANGLE PROJECTION	C.D. NO.
CHKD: JWB	02/02/07	BREAK CAST CORNERS!	PURCH: N/A	FINISH: ASSY
ENGR: RWV	02/02/07	BREAK MECH CORNERS!		
MFR:		TOLERANCES	REF. NO.	SCALE: NONE
MFG:		UNLESS OTHERWISE NOTED	STR. NO.	
TOOL:		LINEAR	ANGULAR	
FDRT:		±	±	

APPROVED
By Charles Hines at 8:24 am, Jun 16, 2011

MAT'L	SEE TABLE	DESCR.	3"-12" RWGV A2362 - OPT. 9306	NUMBER	6819
		MUELLER CO.		W/ BEVEL GEARING, W/ EVERDUR STEM	

6819 3"-12" RWGV A2362 - OPT. 9306 - W/ BEVEL GEARING, W/ EVERDUR STEM