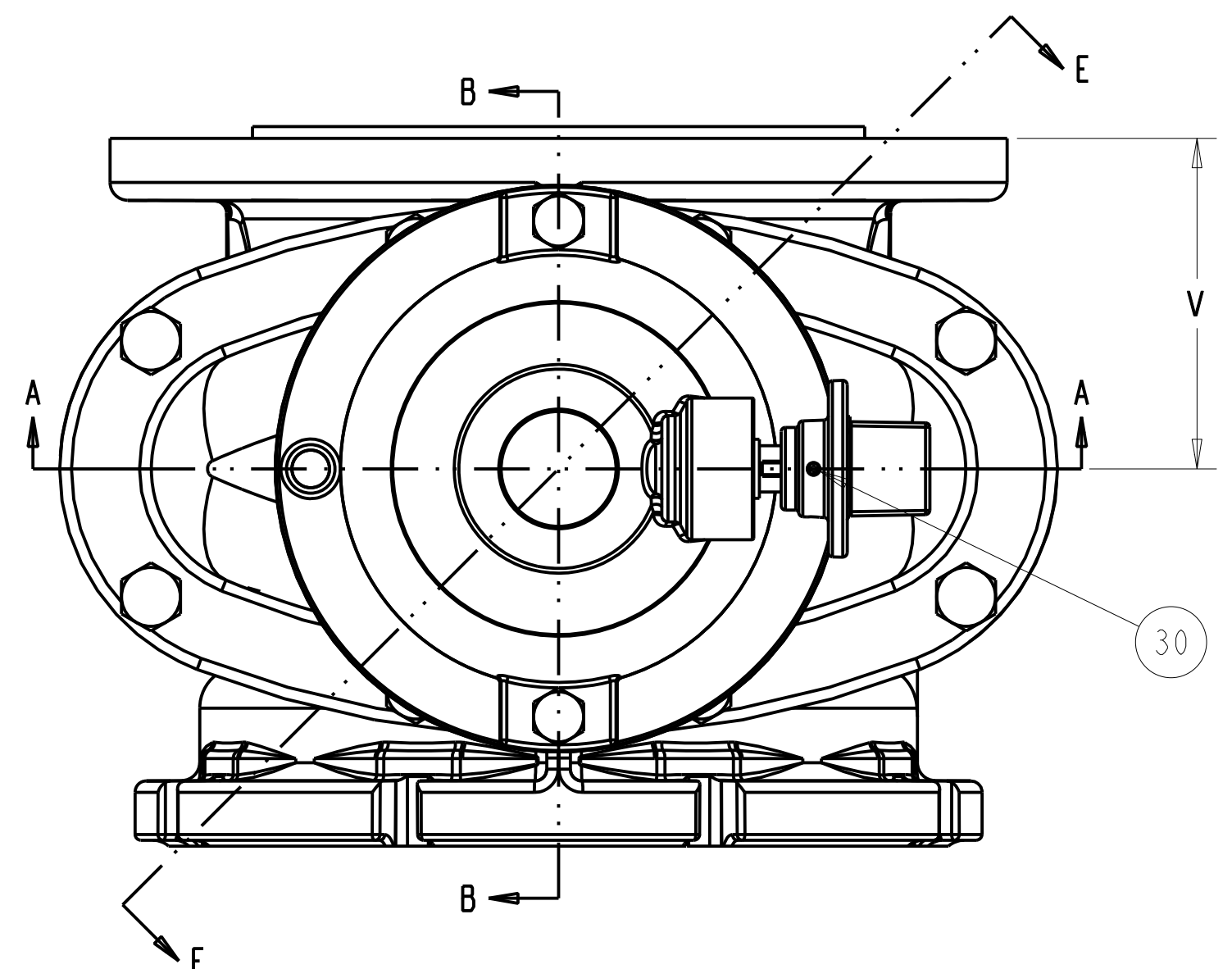
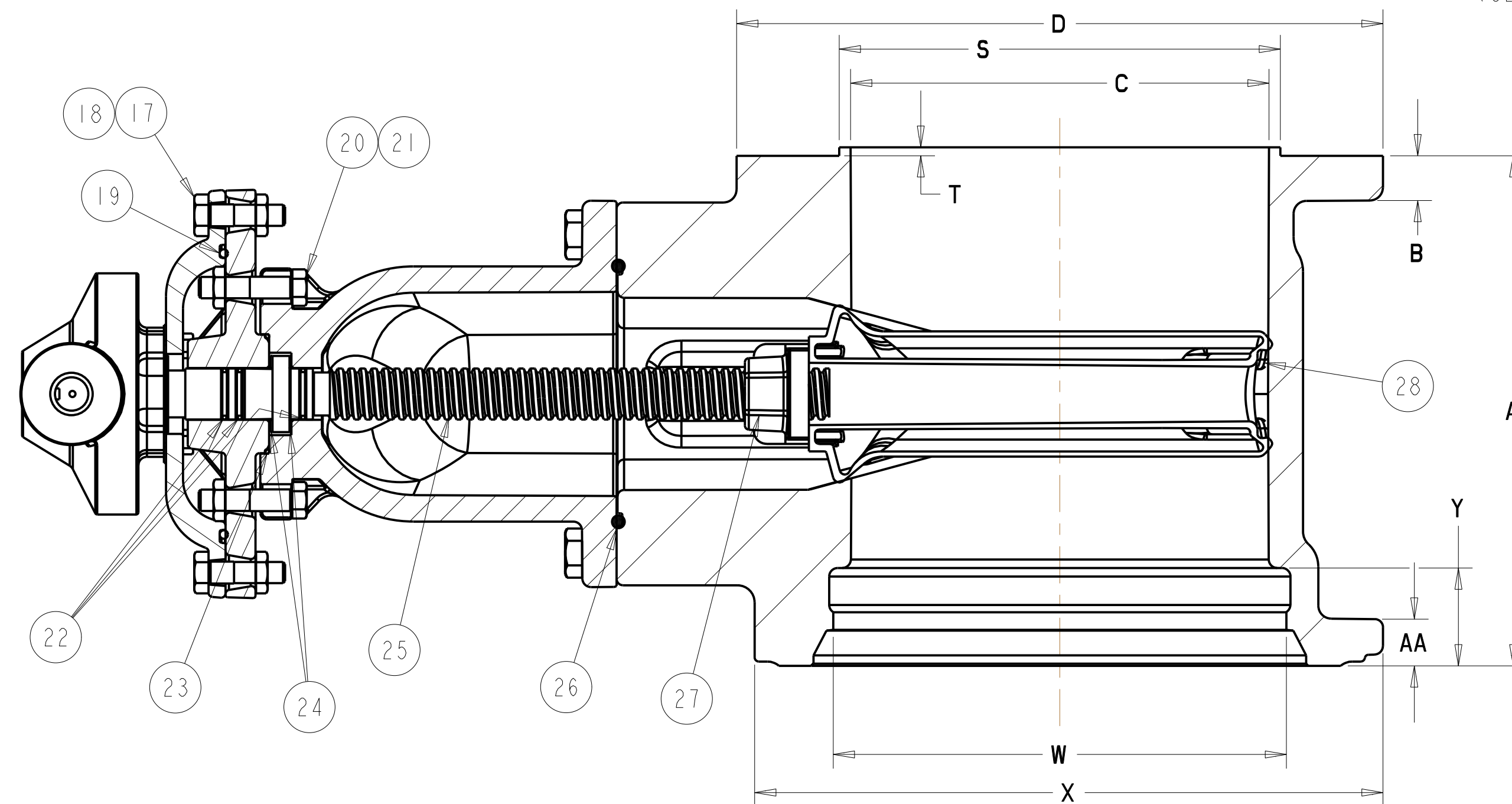
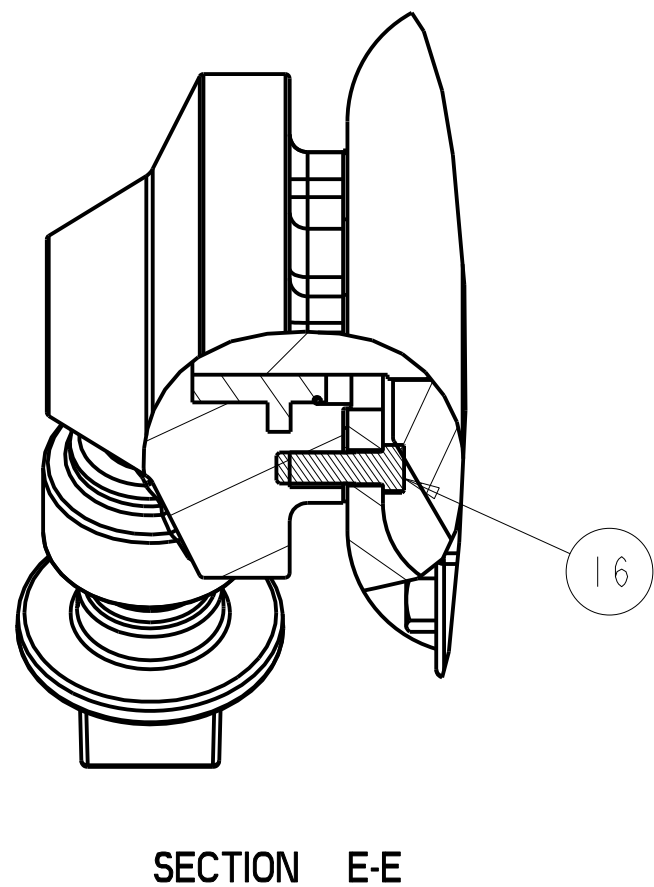
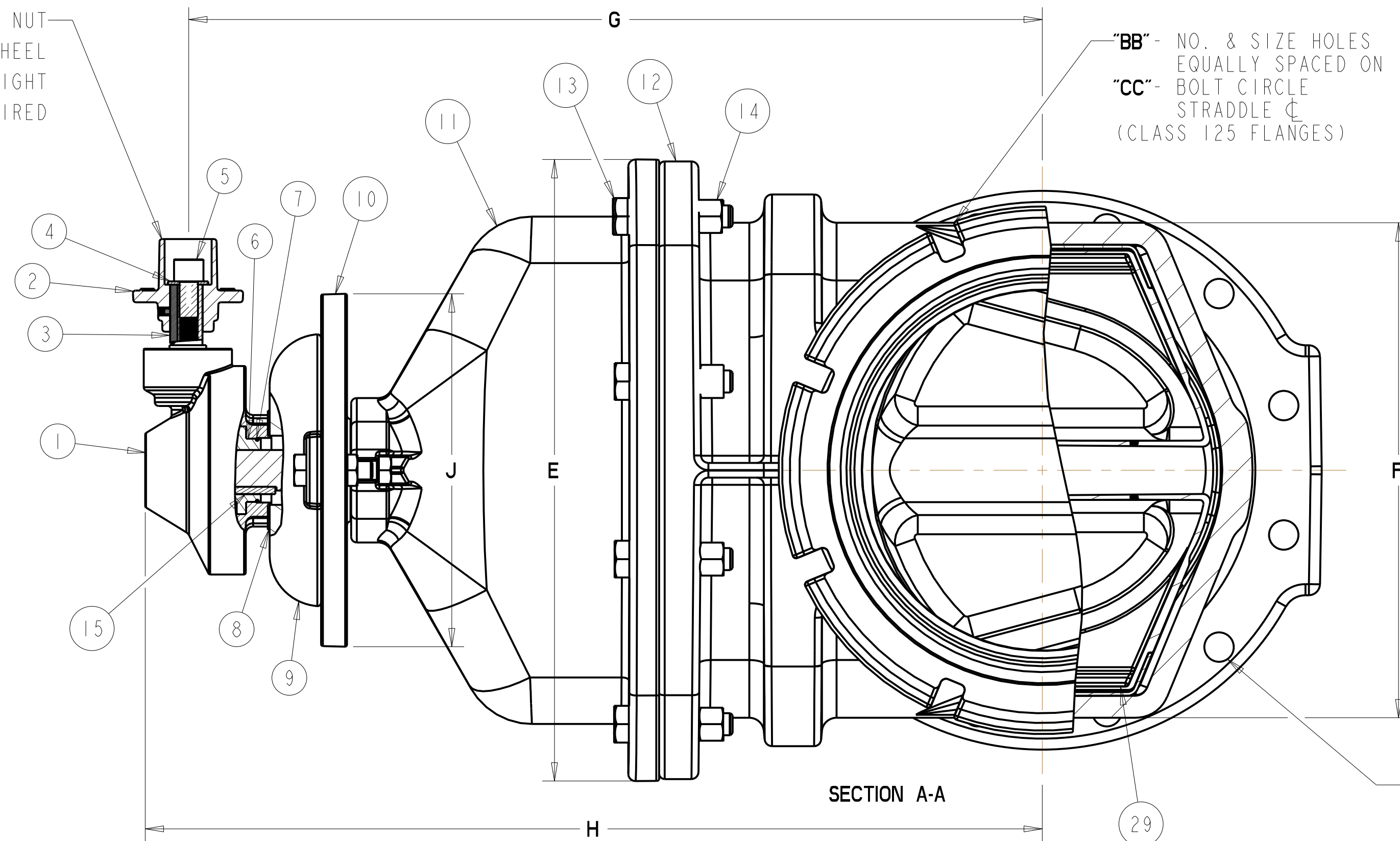


ITEM	DESCRIPTION	REQ'D	MATERIAL	ASTM	
1	BEVEL GEAR (SEE NOTE 3)	1	CAST IRON		
2	WRENCH/OP NUT	1	CAST IRON [SEE NOTE 2]	A126	CLASS B
3	KEY	1	STEEL		
4	HOLD DOWN WASHER	1	STEEL		
5	HEX. SOC. SCREW	1	STEEL		
6	GEAR STEM NUT	1	STEEL		
7	O-RING	1	RUBBER	D2000	
8	GEAR GASKET	1	RUBBER	D2000	
9	ADAPTER	1	CAST IRON [SEE NOTE 2]	A126	CLASS B
10	STUFFING BOX	1	CAST IRON [SEE NOTE 2]	A126	CLASS B
11	BONNET	1	CAST IRON [SEE NOTE 2]	A126	CLASS B
12	BODY	1	CAST IRON [SEE NOTE 2]	A126	CLASS B
13	BONNET BOLT	"P"	304 STAINLESS STEEL	A193	GROUP B8
14	BONNET BOLT NUT	"P"	304 STAINLESS STEEL	F594	GROUP 1
15	KEY	1	STEEL		
16	CAP SCREW	4	304 STAINLESS STEEL	A193	GROUP B8
17	ADAPTER BOLT	2	304 STAINLESS STEEL	A193	GROUP B8
18	ADAPTER BOLT NUT	2	304 STAINLESS STEEL	F594	GROUP 1
19	ADAPTER O-RING	1	RUBBER	D2000	
20	STUFFING BOX BOLT	2	304 STAINLESS STEEL	A193	GROUP B8
21	STUFFING BOX BOLT NUT	2	304 STAINLESS STEEL	F594	GROUP 1
22	STEM O-RINGS	3	RUBBER	D2000	
23	STUFFING BOX O-RING	1	RUBBER	D2000	
24	ANTI FRICTION WASHER	2	CELCON		M-90
25	STEM	1	BRONZE	B138	ALLOY C87600
26	BONNET BODY O-RING	1	RUBBER		
27	DISC NUT	1	BRONZE	B62	ALLOY C83600
28	DISC	1	SEE NOTES 1 & 2		
29	GUIDE CAP	2	CELCON		M-90
30	SET SCREW	1	STEEL		

2" SQUARE WRENCH/OP NUT
OR 12.00" DIA HANDWHEEL
OPEN LEFT OR RIGHT
AS REQUIRED



SIZE	A	B	C	D	E	F	G	H	J	L	M	P	S	T	V	W	X	Y	AA	BB	CC	TURNS TO OPEN MASTERGEAR RATIO 2.3:1	TURNS TO OPEN ROTORK RATIO 2:1
3	8.80	0.80	3.30	7.50	8.63	6.01	13.75	15.88	12.00	4 - 0.75	6.00	6	3.984 3.954	0.18	4.55	4.06	7.50	2.56	0.94	4 - 0.75	6.19	25	22
4	11.73	0.94	4.30	9.00	10.79	8.25	15.56	17.69	12.00	8 - 0.75	7.50	4	4.984 4.954	0.18	6.05	4.90	9.12	3.21	1.00	4 - 0.88	7.50	32	28
6	12.75	1.06	6.30	11.00	13.50	10.50	19.28	21.41	12.00	8 - .880	9.50	6	6.984 6.954	0.25	6.50	7.00	11.12	3.03	1.09	6 - 0.88	9.50	47	41
8	14.37	1.19	8.30	13.50	16.36	13.21	22.68	24.81	12.00	8 - .880	11.75	6	8.984 8.954	0.25	7.50	9.15	13.37	3.22	1.18	6 - 0.88	11.75	61	53
10	15.70	1.25	10.30	16.00	19.99	16.48	23.99	26.45	12.00	12 - 1.00	14.25	8	10.984 10.954	0.25	8.27	11.20	15.62	2.50	1.25	8 - 0.88	14.00	76	66
12	14.99	1.31	12.30	19.00	21.00	16.83	28.68	31.14	12.00	12 - 1.00	17.00	8	12.984 12.954	0.25	7.00	13.30	17.88	2.88	1.31	8 - 0.88	16.25	89	77

NOTES:
1. RUBBER ENCAPSULATED CAST IRON DISC
CAST IRON - ASTM A126 CLASS B
RUBBER - SBR - ASTM D2000
2. MANUFACTURER'S OPTION TO UPGRADE
MAT'L TO D1 - A536 GR 65-45-12
3. VALVES WILL BE FURNISHED WITH
ONE OF THE LISTED OPERATORS AT
THE MANUFACTURER'S DISCRETION
MASTERGEAR A03 OR ROTORK HOB210.

SR BY	WAF	05/11/09	UNLESS OTHERWISE NOTED	THIRD ANGLE PROJECTION	C.D. NO.
CHKD	CGH	05/11/09	BREAK CAST CORNERS!		PART. NO.
ENGR	JWR	05/11/09	BREAK MACH CORNERS!		
MFR			TOLERANCES	PURCH.	FINISH
MFG			UNLESS OTHERWISE NOTED	N/A	ASSY
TOOL			LINEAR	SCALE	NONE
FDRT			ANGULAR	STR. NO.	
MAT'L SEE TABLE			DESCR. 3" - 12" T-2360 RWTV WITH BEVEL GEARING		
APPROVED			NUMBER 6839		

APPROVED
By Jason W. Bradley at 5:21 pm, May 11, 2009

6839 3" - 12" T-2360 RWTV WITH BEVEL GEARING