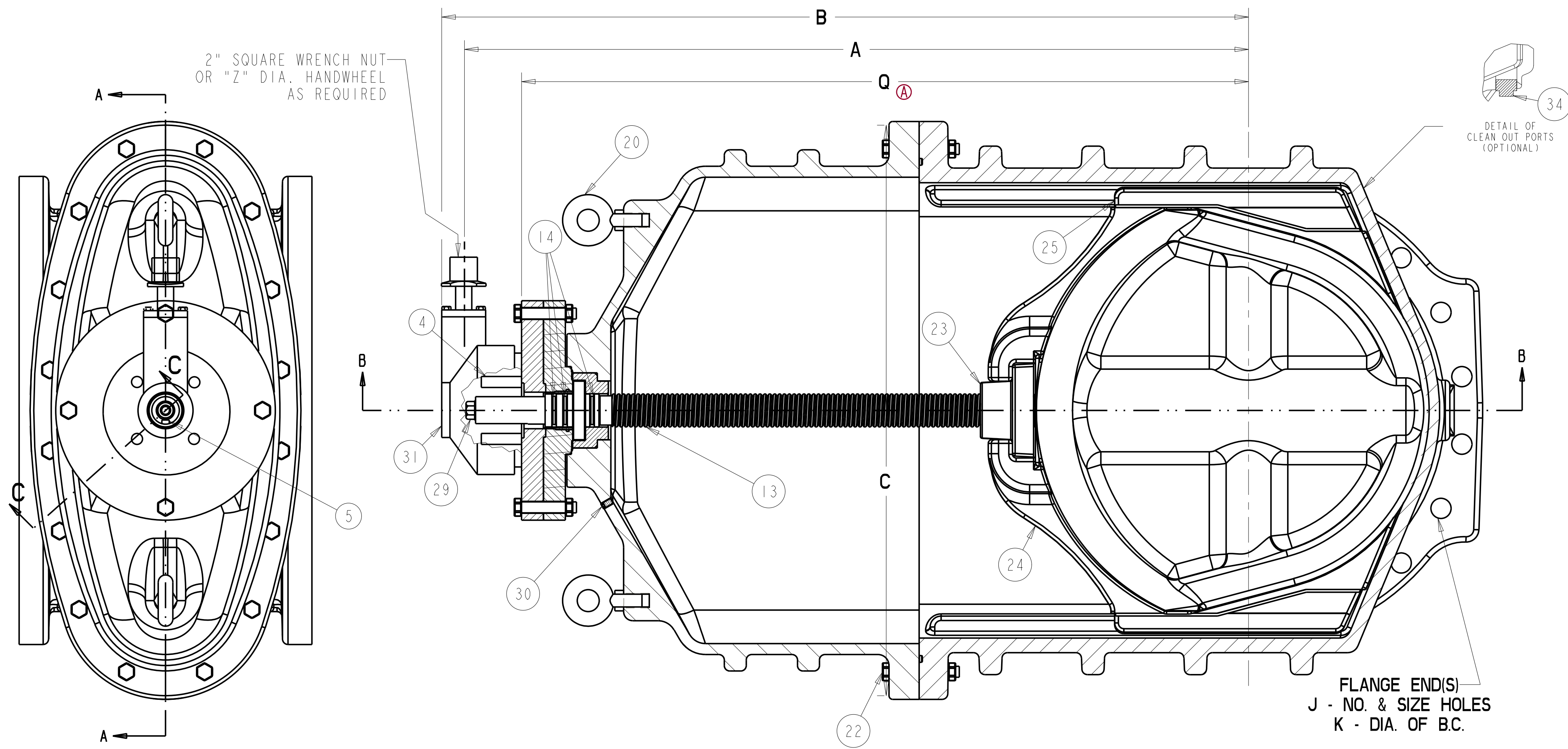
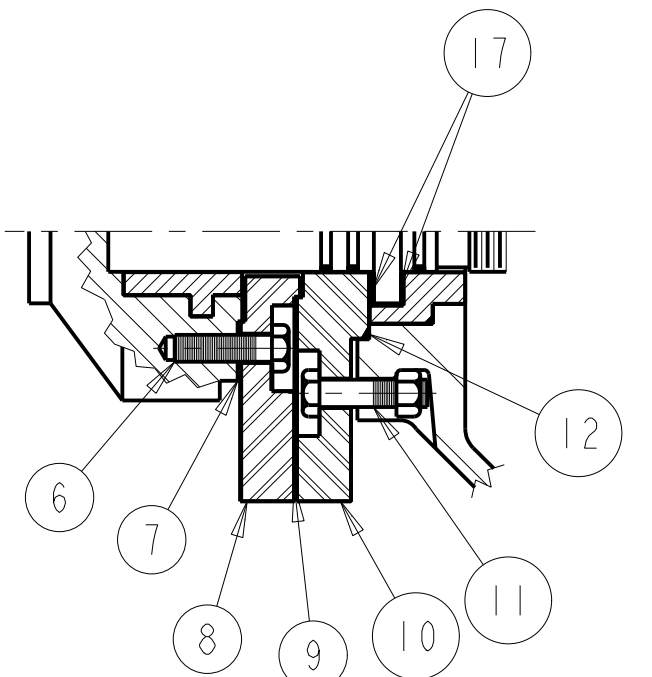
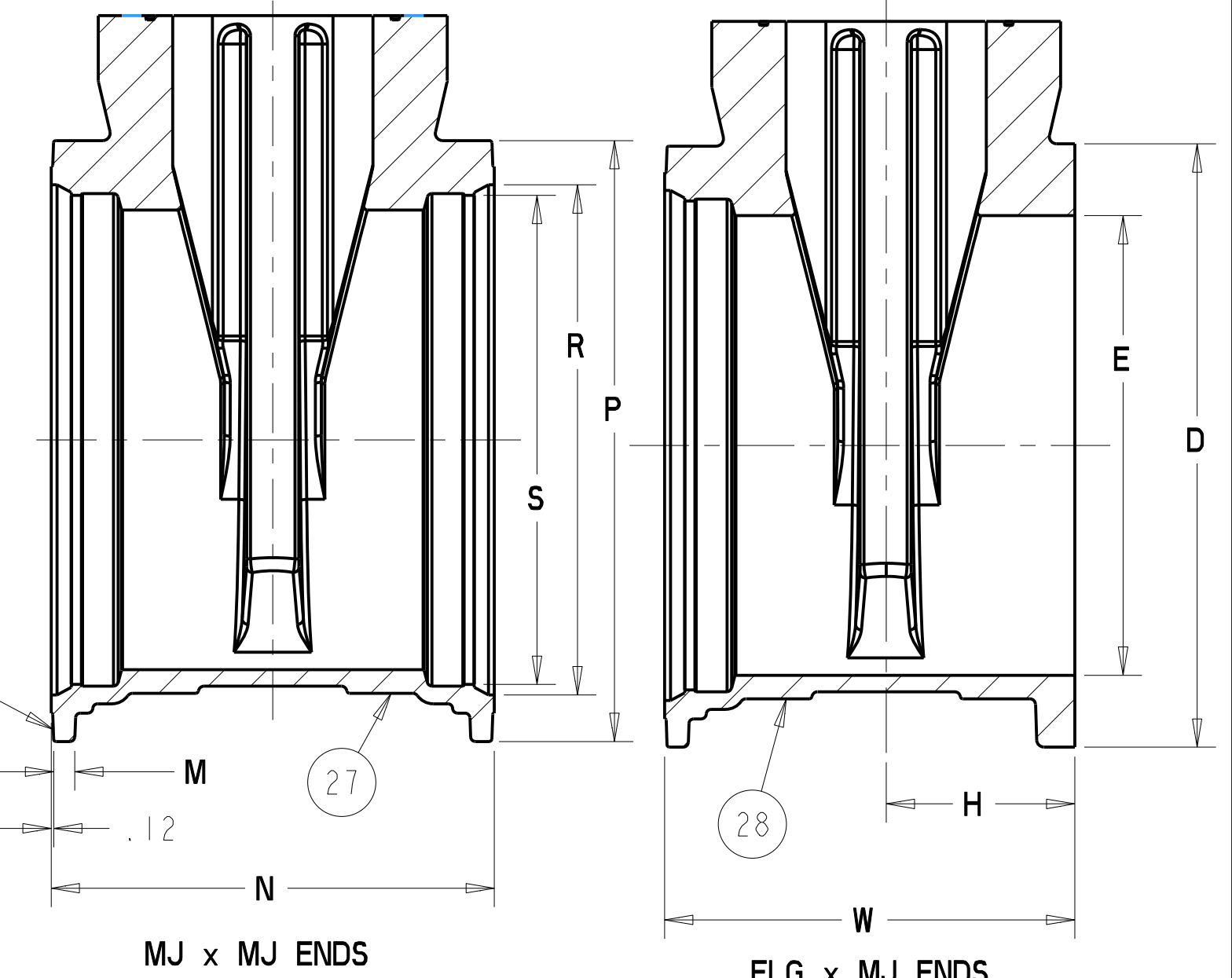


16" - 36" RESILIENT WEDGE GATE VALVES - RWGV WITH BEVEL GEAR, 304SS STEM & FASTENERS



PARTS LIST					
ITEM	DESCRIPTION	REQ'D	MATERIAL	ASTM	
1	CAP SCREW	1	304 STAINLESS STEEL		SEE NOTE 2
2	WRENCH NUT	1	CAST IRON [SEE NOTE 3]	A126	CLASS B
3	BEVEL GEAR UNIT	1			SEE NOTE 4
4	STEM NUT	1	BRASS		
5	KEY	1	STEEL		
6	SOCKET HEAD SCREW	4	304 STAINLESS STEEL		SEE NOTE 2
7	GASKET	1	RUBBER	D2000	
8	ADAPTER	1	STEEL	A36	
9	GASKET	1	RUBBER	D2000	
10	STUFFING BOX	1	STEEL	A36	
11	SOCKET HEAD BOLT & NUT	4	304 STAINLESS STEEL		SEE NOTE 2
12	O-RING	1	EPDM RUBBER	D2000	
13	STEM	1	304 STAINLESS STEEL	A276 A473	
14	O-RING	3	EPDM RUBBER	D2000	
15	BONNET BUSHING	1	BRONZE	B62	
16	O-RING	1	EPDM RUBBER	D2000	
17	WASHER	2	BRASS		
18	HEX BOLT & NUT	4	304 STAINLESS STEEL		SEE NOTE 2
19	BONNET	1	DUCTILE IRON	A536	GR. 65-45-12
20	EYEBOLT	2	STEEL		GALVANIZED
21	O-RING	1	EPDM RUBBER	D2000	
22	HEX BOLT & NUT	"L"	304 STAINLESS STEEL		SEE NOTE 2
23	DISC NUT	1	BRONZE	B62	
24	DISC	1			SEE NOTE 1
25	GUIDE CAP	2	CELCON	M90	
26	BODY - FLG ENDS	1	DUCTILE IRON	A536	GR. 65-45-12
27	BODY - MJ ENDS	1	DUCTILE IRON	A536	GR. 65-45-12
28	BODY FLG X MJ ENDS	1	DUCTILE IRON	A536	GR. 65-45-12
29	HOLD-DOWN WASHER & BOLT	1	STEEL		SEE NOTE 5
30	PIPE PLUG	1	304 STAINLESS	A193	GRADE B8
31	ACTUATOR PIPE PLUG	1	CAST IRON		
32	STUFFING BOX SLEEVE	1	DELTRIN		
33	O-RING	1	EPDM RUBBER	D2000	
34	PIPE PLUG	2	SUPPLIED WHEN TAPPED		

- NOTES:
- RUBBER ENCAPSULATED DUCTILE IRON DISC
RUBBER - SBR 16" - EPDM (18" AND UP) ASTM D2000
DUCTILE IRON ASTM A536 GRADE 65-45-12
 - BOLTS - ASTM A193 GRADE B8
NUTS - ASTM F594 GROUP 1
 - MANUFACTURER'S OPTION TO UPGRADE MATERIAL TO
DUCTILE IRON A536 GRADE 65-45-12.
 - VALVES WILL BE FURNISHED WITH ONE OF THE LISTED OPERATORS
AT THE MANUFACTURER'S DISCRETION.
16" - 24" MASTERGEAR OR ROTORK
30" & 36" LIMITORQUE OR ROTORK.
 - STEEL BOLT AND NUT SPECIFICATIONS:
BOLTS - SAE J429 GRADE 2
NUTS - ASTM A563 GRADE B
FASTENERS - PLATED TO ASTM F1941 CLASS Fe/Zn 12C



VALVE SIZE	A	B	C	D	E	F	G	H	J	K	L	M	N	Q	P	R	S	W	X	Y	Z	URNS TO OPEN MASTERGEAR, RATIO 4.5:1 LIMITORQUE, RATIO 4:1	URNS TO OPEN ROTORK, RATIO 4:1	WEIGHT
16	37.95	39.92	26.58	23.50	16.00	16.06	1.59	8.03	16-1.20	21.25	12	1.10	19.75	34.13	22.56	18.40	17.28	17.91	12-.875	21.00	12	221	196	1,000
18	43.98	45.95	30.50	25.00	18.38	17.00	1.69	8.50	16-1.25	22.75	12	1.06	21.00	40.16	24.88	20.74	19.64	19.00	12-.875	23.25	12	257	228	1,350
20	47.10	49.07	33.75	27.50	20.38	18.00	1.78	9.00	20-1.25	25.00	12	1.60	21.50	43.28	27.25	22.84	21.74	19.75	14-.875	25.50	18	284	252	1,800
24	53.57	55.54	39.50	32.00	24.38	20.00	2.00	10.00	20-1.38	29.50	16	1.12	23.50	49.75	31.88	27.05	25.94	21.75	16-.875	30.00	18	338	300	2,300
30	65.34	67.31	48.00	38.75	30.38	26.00	2.12	13.00	28-1.38	36.00	20	1.25	33.50	61.33	39.53	33.47	32.18	29.75	20-1.125	36.88	18	372	372	5,000
36	77.60	79.57	56.50	46.00	36.38	30.00	2.37	15.00	32-1.63	42.75	24	1.45	37.50	73.59	46.41	39.77	38.48	33.75	24-1.125	43.75	18	444	444	8,400

ECO 1525618
ECO 1570443
HD 8/23/11
UPDATED COL. A & B. ADDED COL. Q.
37.95 WAS 37.03, 38.92 WAS 39.24,
43.98 WAS 49.41, 45.95 WAS 46.06,
47.10 WAS 53.01, 49.07 WAS 49.25,
53.57 WAS 59.15, 55.54 WAS 55.50,
65.34 WAS 70.81, 67.31 WAS 66.52,
77.60 WAS 83.08, 79.57 WAS 78.75

APPROVED
By Charles Hines at 8:15 am, Aug 25, 2011

SR BY: JAB	DATE: 1/22/10	UNLESS OTHERWISE NOTED	THIRD ANGLE PROJECTION	C.D. NO.
CHKD: NAF	DATE: 1/22/10	BREAK CAST CORNERS!		PART. NO.
ENGR: CBH	DATE: 1/22/10	BREAK MACH CORNERS!		
MGR:		TOLERANCES	PURCH. NO.	FINISH
INFO:		UNLESS OTHERWISE NOTED	REF. NO.	SCALE
TOOL:		LINEAR	ANGULAR	NONE
FDRT:		±	±	STR. NO.
NOTED				
MATERIAL		DESCR.		NUMBER
		16"-36" RWGV'S W/ BEVEL GEAR 304SS STEM & FASTENERS		6856