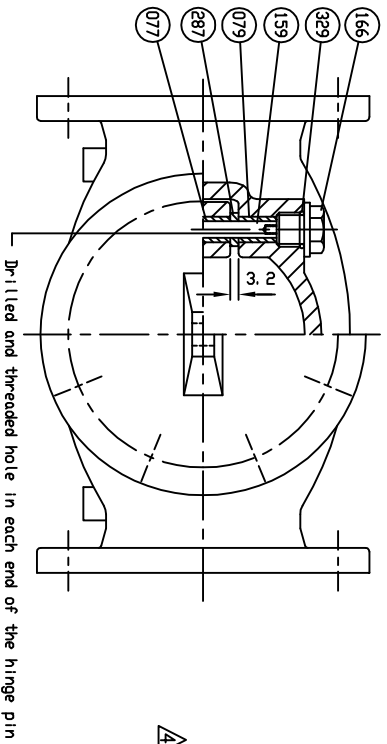
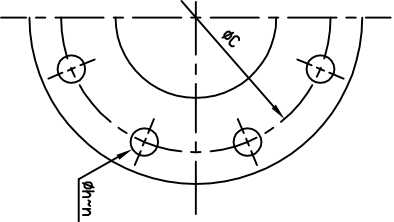
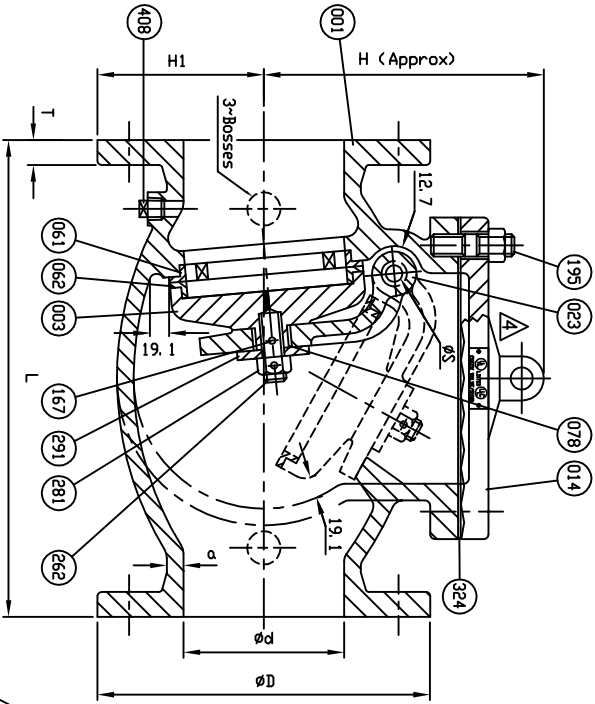


REFERENCE ONLY

ISSUE #	DATE	CHANGE DESCRIPTION	BY
01	09/20/2010	BODY MARKING CHANGED (BEFORE RELEASE DATED)	JC
02	09/21/2010	PRESSURE RATINGS CHANGED (BEFORE RELEASE DATED)	JC
03	03/24/11	PLUG SIZE ADDED FOR ALL VALVES (EGR# 484)	JC
04	09/15/11	ADD UL TAG INFO TO DRAWINGS (EGR# 553)	AA



DETAIL A FOR TAG PLATE

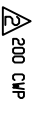


SIZE	ANSI B16.1 CL.125	PLUG SIZE			
		ØD	ØC	Øh	n
1/2 (65)	8.50	7.01	5.51	0.75	4
3 (80)	9.50	7.52	5.98	0.75	4
4 (100)	11.50	9.02	7.52	0.75	8
6 (150)	14.00	10.98	9.49	0.87	8
8 (200)	19.50	14.69	11.77	0.87	8
10 (250)	24.50	15.98	14.25	1.00	12
12 (300)	27.50	19.02	17.01	1.00	12



UL LISTED ULC

SIZE (INCH)



CI-CF



A2120BB

20..



NO.	PARTS	MATERIAL	ASTM DESIGNATION	Q'TY
408	Plug (B)	Malleable Iron	A 47	1
329	D-Ring	Rubber (Buna N)	D 2000 BK 707	1
324	Cover Gasket	Rubber (Buna N)	D 2000 BK 707	1
291	Washer	Brass	B 21	1
287	Spacer	Brass	B 62	2
281	Disc Nut	Brass	B 21	1
262	Disc Stud	Brass	B 21	1
195	Cover Stud & Nut	Zinc Coated Steel	A 307 Grade B	1set
167	Pin	Stainless Steel	A 276 Type 304	2
166	Plug (A)	Brass	B 21	1
159	Hinge Pin	Stainless Steel	A 276 Type 304	1
079	Body Bushing	Bronze	B 62	1
078	Arm Bushing	Bronze	B 62	1
062	Disc Seat Ring	Bronze	B 62	1
061	Body Seat Ring	Bronze	B 62	1
023	Arm	Cast Iron	A 126 Class B	1
014	Cover	Cast Iron	A 126 Class B	1
003	Disc	Cast Iron	A 126 Class B	1
001	Body	Cast Iron	A 126 Class B	1

MUELLER COMPANY

SWING CHECK VALVE
SIZE 2 1/2" (65) - 12" (300)

A2120BB

M50607

REV. 4

500 WEST ELSTON ST. P.O. BOX 671 DECATUR, IL 62525
 DR. JON CULPANI DATE 01/07/10 REF. DWG. USA1784E
 N.T.S. CHK. P.P.P. E.C.K. PHONE: 217-423-4471