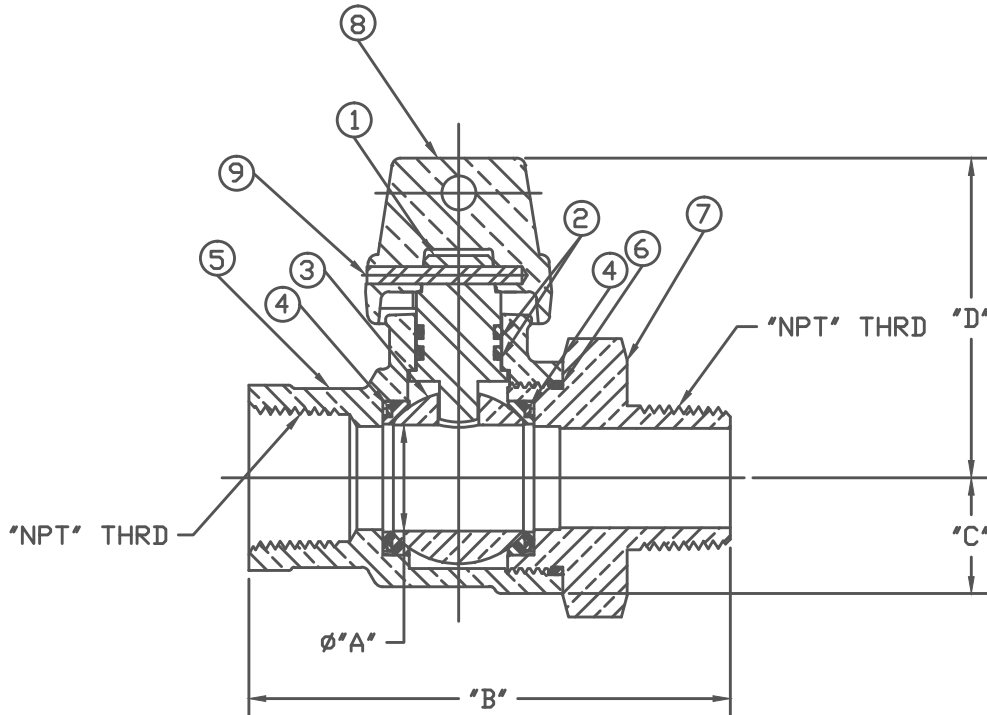


No.	DESCRIPTION	MATERIAL
1	STEM	LOW LEAD BRASS ALLOY
2	O-RING	EPDM ASTM D2000
3	BALL	LOW LEAD BRASS ALLOY
4	GASKET - SEAL	NITRILE ASTM D2000
5	BODY	CAST LOW LEAD BRASS ALLOY
6	O-RING	EPDM ASTM D2000
7	END PIECE	CAST LOW LEAD BRASS ALLOY
8	CAP	CAST BRASS ASTM B62 ALLOY C83600
9	SOLID PIN	AISI 303 STAINLESS STEEL



SIZE	ØA	B	C	D
3/4R	.62	3.40	.75	2.12
3/4	.75	3.50	.84	2.32
1R	.75	3.93	.84	2.32
1	1.00	4.39	1.15	2.57
1-1/2	1.50	5.36	1.50	3.37
2	2.00	6.03	1.82	3.92

NOTE: ALL WETTED PARTS ARE LOW LEAD BRASS ALLOY

FILEPATH: PROD-ENG/MUELLER/ASYSUBMITTALS/B20285N

				DRFTR	JGarvin	2/21/12	<b>Mueller Co.</b>	
				CHKR				
				ENGR				
				MGR				
				BY	DATE	UNLESS OTHERWISE NOTED		THIRD ANGLE PROJECTION
				STK No:		SURFACE PREPARATION:		REF. No.
				MAT'L:		BREAK CORNER(S) ---- .000		
				DESCR.		SURFACE FINISH -- XX RMS		NONE
				DESCR.		TOLERANCE(S):		
				DESCR.		LINEAR ----- ± .000		B20285N
				DESCR.		ANGULAR ----- ± 0°00'		
REV	ECR	DESCRIPTION	DATE	BY	CHKR	INLINE BALL CURB VALVE LOW LEAD BRASS (FIP x MIP)		
PER EST NO: DXXXX EST FIN WT = 0.0000 lbs								

PART NUMBER  
B20285N  
442-MRKTG