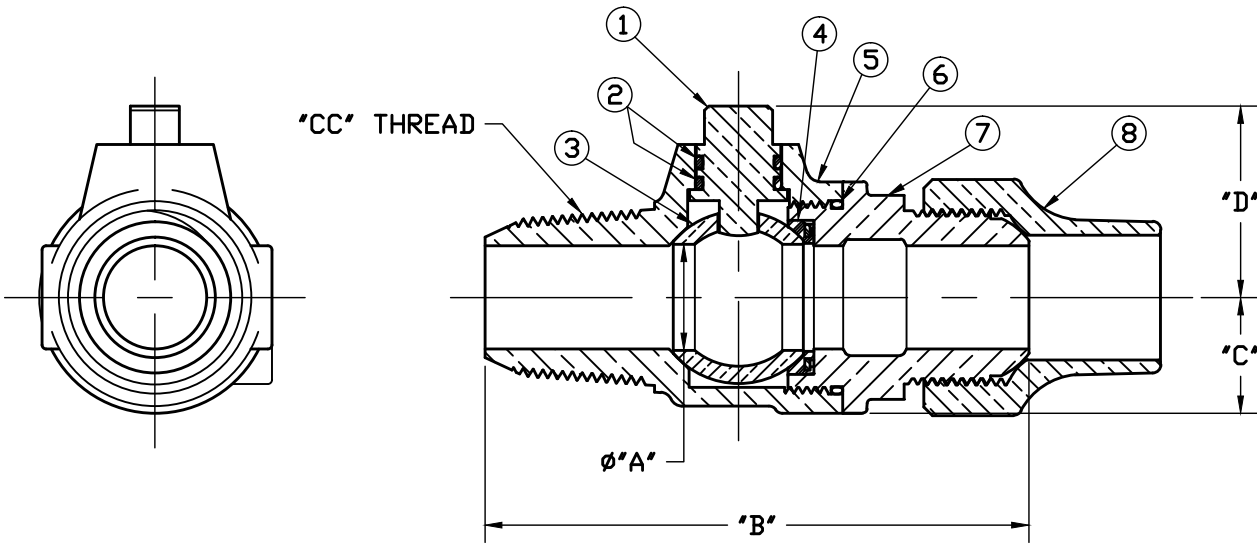


No.	DESCRIPTION	MATERIAL
1	STEM	LOW LEAD BRASS ALLOY
2	O-RING	EPDM D2000
3	BALL	LOW LEAD BRASS ALLOY
4	GASKET - SEAL	NITRILE D2000
5	BODY	CAST LOW LEAD BRASS ALLOY
6	O-RING	EPDM D2000
7	END PIECE	CAST LOW LEAD BRASS ALLOY
8	TUBE NUT	CAST BRASS ASTM B62 ALLOY C83600



SIZE	øA	B	C	D
3/4	.75	3.95	.84	1.39
3/4x1	.75	4.08	.84	1.39
1	1.00	4.87	1.15	1.59
1-1/2	1.50	6.11	1.50	2.24
2	2.00	7.21	1.82	2.56

NOTE: ALL WETTED PARTS ARE LOW LEAD BRASS ALLOY

FILEPATH: PROD-ENG/MUELLER/ASYSUBMITTALS/B25000N

DRFTR	JGarvin	6/3/11	Mueller Co.		
CHKR					
ENGR					
MGR					
			UNLESS OTHERWISE NOTED	THIRD ANGLE PROJECTION	
			SURFACE PREPARATION:	REF. No. SCALE	
			BREAK CORNER(S) ---- .000		
			SURFACE FINISH -- XX RMS	NONE	
			TOLERANCE(S):		
			LINEAR ----- ± .000		
			ANGULAR ----- ± 0°00'		
			STK No:		
			MAT'L:		
			DESCR.		
			BALL CORPORATION VALVE	PART NUMBER	
			LOW LEAD BRASS("CC" x "CS")	B25000N	
REV	ECR	DESCRIPTION	DATE	BY	CHKR
PER EST NO: DXXXX EST FIN WT = 0.0000 lbs					

PART NUMBER
B25000N
442-MRKTG