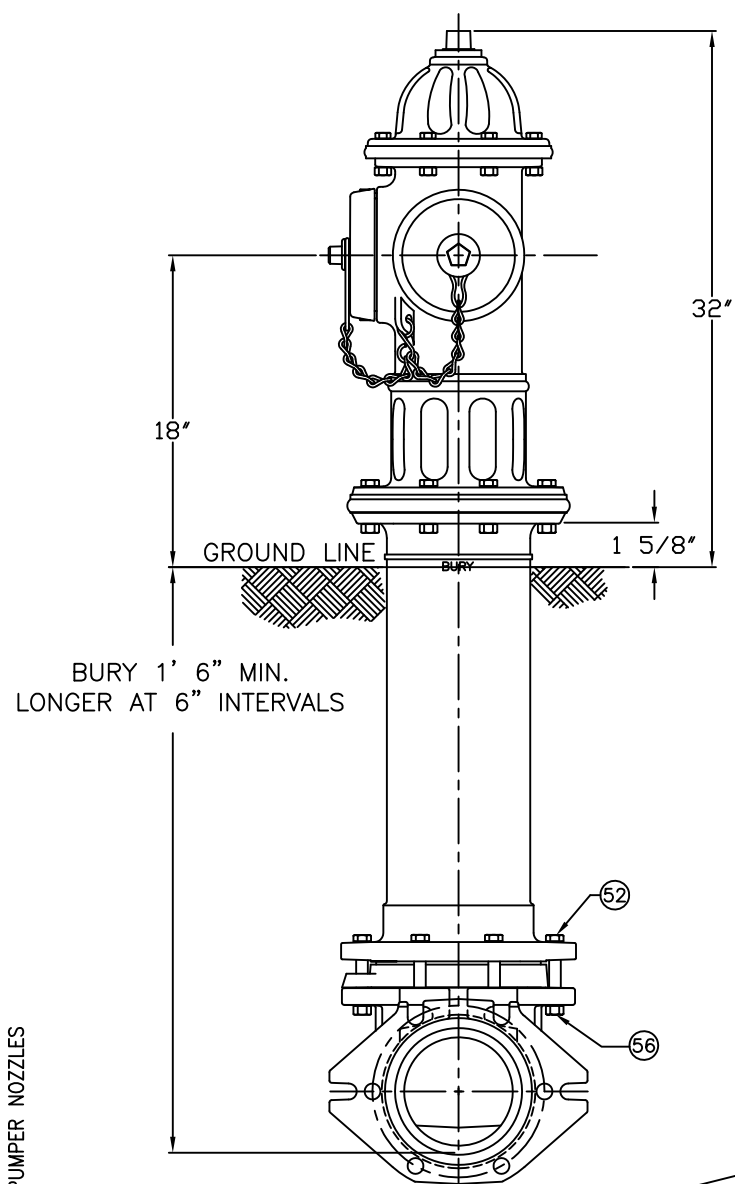


5 1/4" A425 SUPER CENTURION "200" W/ TWO PUMPER NOZZLES  
200 P.S.I. W.P.- 400 P.S.I. TEST

DWG. FH. 105



PARTS LIST					ITEM	DESCRIPTION	REQ'D	MATERIAL	A.S.T.M.	
1	OPERATING NUT	1	BRONZE	B-584	ALLOY C83600	22	CAP CHAIN	3	STEEL	ELECTRO GALV.
2	WIPER RING	1	RUBBER	D-2000	EPDM	23	CHAIN HOOK	1	STEEL	ELECTRO GALV.
3	HOLD DOWN NUT O-RING	1	RUBBER	D-2000	BUNA N	24	UPPER BARREL	1	CAST IRON	A-126 CLASS B
4	HOLD DOWN NUT	1	BRONZE	B-584	ALLOY C83600	25	SAFETY STEM COUPLING	1	STAINLESS STEEL	A-890 1.5% SILICON MAX.
5	BONNET O-RING	1	RUBBER	D-2000	BUNA N	26	SAFETY FLANGE BOLT	8	STEEL	A-307 ELECTROGALV. GR. B
6	ANTI-FRICTION WASHER	1	CELCON		GRADE M90-04	27	SAFETY FLANGE GASKET	1	CELLULOSE	
7	OIL FILLER PLUG	1	BRASS	B-16	ALLOY 360	28	SAFETY FLANGE	1	CAST IRON	A-126 CLASS B
8	BONNET	1	CAST IRON	A-126	CLASS B	29	COTTER PIN	2	STAINLESS STEEL	A-276 302
9	HEX BOLT	8	STEEL	A-307	ELECTROGALV. GR. B	30	CLEVIS PIN	2	STAINLESS STEEL	A-276 305
10	BONNET GASKET	1	CELLULOSE			31	LOWER STEM	1	CARBON STEEL	A-576 GRADE 1144T
11	UPPER STEM	1	CARBON STEEL	A-576	GR 1144T	32	LOWER BARREL	1	CAST IRON	A-126 CLASS B
12	STEM O-RING	1	RUBBER	D-2000	BUNA N	33	STEM PIN	1	STAINLESS STEEL	A-276 302
13	NOZZLE LOCK	3	STAINLESS STEEL	A-276	305 OR 410	34	DRAIN VALVE FACING	2	H.D. POLYETHYLENE	LS 5660-00
14	PUMPER NOZZLE	2	BRONZE	B-584	ALLOY C89833	35	DRAIN VALVE FACING SCREW	4	STAINLESS STEEL	A-276 302
15	PUMPER NOZZLE CAP GASKET	2	RUBBER	D-2000	NEOPRENE	36	UPPER VALVE PLATE	1	BRONZE	B-584 ALLOY C89833
16	PUMPER NOZZLE O-RING	2	RUBBER	D-2000	BUNA N	37	BOTTOM SEAT O-RING	1	RUBBER	D-2000 BUNA N
17	PUMPER NOZZLE CAP	2	CAST IRON	A-126	CLASS B	38	DRAIN RING	1	BRONZE	B-584 ALLOY 844
18						39	SEAT RING	1	BRONZE	B-584 ALLOY C89833
19						40	DRAIN RING HOUSING	1	CAST IRON	A-126 CLASS B
20						41	MAIN VALVE	1	RUBBER	D-2000 NATURAL
21						42	LOWER VALVE PLATE	1	CAST IRON	A-126 CLASS B
						43	LOCK WASHER	1	STAINLESS STEEL	A-276 302

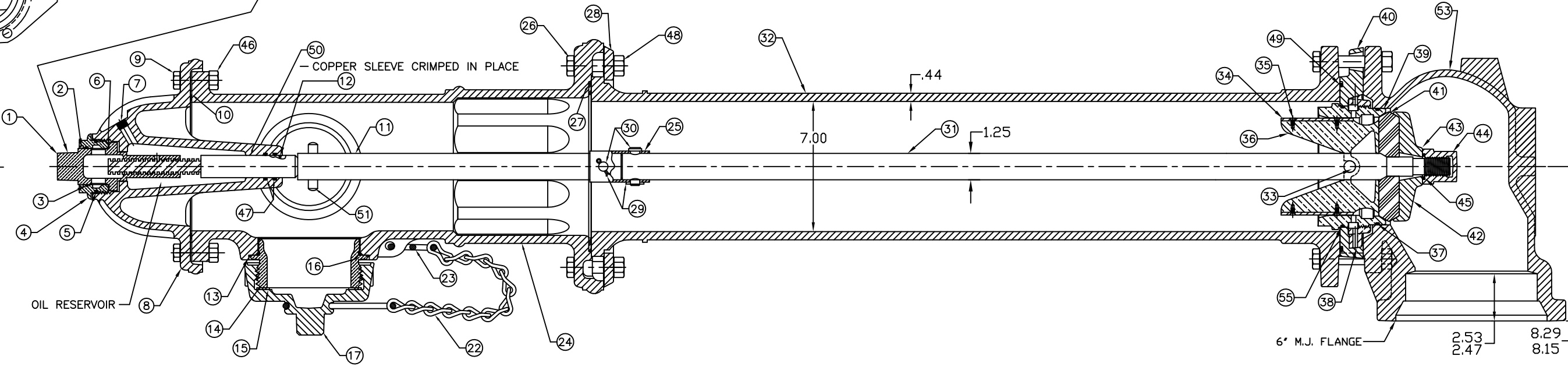
ITEM	DESCRIPTION	REQ'D	MATERIAL	A.S.T.M.	
44	VALVE NUT	1	CAST IRON	A-126	CLASS B
45	VALVE NUT SEAL	1	RUBBER		NITRILE
46	HEX NUT	8	STEEL		ELECTRO. GALV.
47	STEM O-RING	2	RUBBER	D-2000	BUNA N
48	SAFETY FLANGE NUT	8	STEEL		ELECTRO. GALV.
49	DRAIN RING HOUSING O-RING	1	RUBBER	D-2000	BUNA N
50	SLEEVE	1	COPPER	B-75	ALLOY 122
51	UPPER STEM PIN	1	STAINLESS STEEL	A-276	302
52	HEX BOLT	6	STEEL	A-307	ELECTROGALV. GR. B
53	SHOE	1	CAST IRON	A-126	CLASS B
* 54	PIPE GLAND	1	CAST IRON	A-126	CLASS B
55	TOP SEAT O-RING	1	RUBBER	D-2000	BUNA N
56	HEX NUT	6	STEEL	A-307	ELECTROGALV. GR. B
* 57	MECH. JOINT GASKET	1	RUBBER	D-2000	NATURAL
* 58	T-HEAD BOLT	6	STEEL	A-242	TYPE 1
* 59	HEX NUT	6	STEEL	A-242	TYPE 1

SEE CAT. RECORD FOR RESPECTIVE PARTS OR SUB. ASS'YS

\* NOT SHOWN

NOTE: SIZE AND STYLE OF OPERATING NUT, SHOE SIZE, AND THREADING OF NOZZLES IS PER CUSTOMER SPECS.

OPEN LEFT APPROXIMATELY 17 1/4 TURNS TO OPEN OP. NUT DIMENSIONS PER CUSTOMER SPECS. STANDARD 1-1/2 PENT.



REV.	DESCRIPTION	REF.	DATE
C	REVISE ITMES 1, 4, 14, 36, & 39	JMG	11-8-13
B	REVISE MATL ON ITEMS #11 & 31	ANC	2-24-12
A	REVISE ITEMS # 11 & 31	ANC	11-20-08

<small>INCH</small> <small>INITIAL RELEASE</small> <small>DRW'N</small> JEH 7-19-01 <small>CHK'N</small> <small>APP</small> JMG 7-19-01 <small>E.O. NUMBER</small>	<b>TOLERANCES - MACHINING</b> <small>UNLESS OTHERWISE NOTED</small> <small>BREAK EDGES</small> <small>MACH. .006/.016</small> <small>FINISH SURFACES</small> <small>125</small> <small>FRACTIONS ±1/64</small> <small>DECIMALS 2 PL ±.025</small> <small>3 PL ±.010</small> <small>ANGLES ±1°</small>	<small>THIRD ANGLE PROJECTION</small> <small>PURCH.</small> <small>FINISH</small> <small>REF. NO.</small> <small>N.T.S.</small> <small>STK. NO.</small>
<small>MAT'L</small> SEE TABLE <small>DESCR.</small> 5 1/4" A425 SUPER CENTURION "200" W/ TWO PUMPER NOZZLES		<small>REVISION</small> C <small>NUMBER</small> FH 105 <small>SHEET 1 OF 1</small>