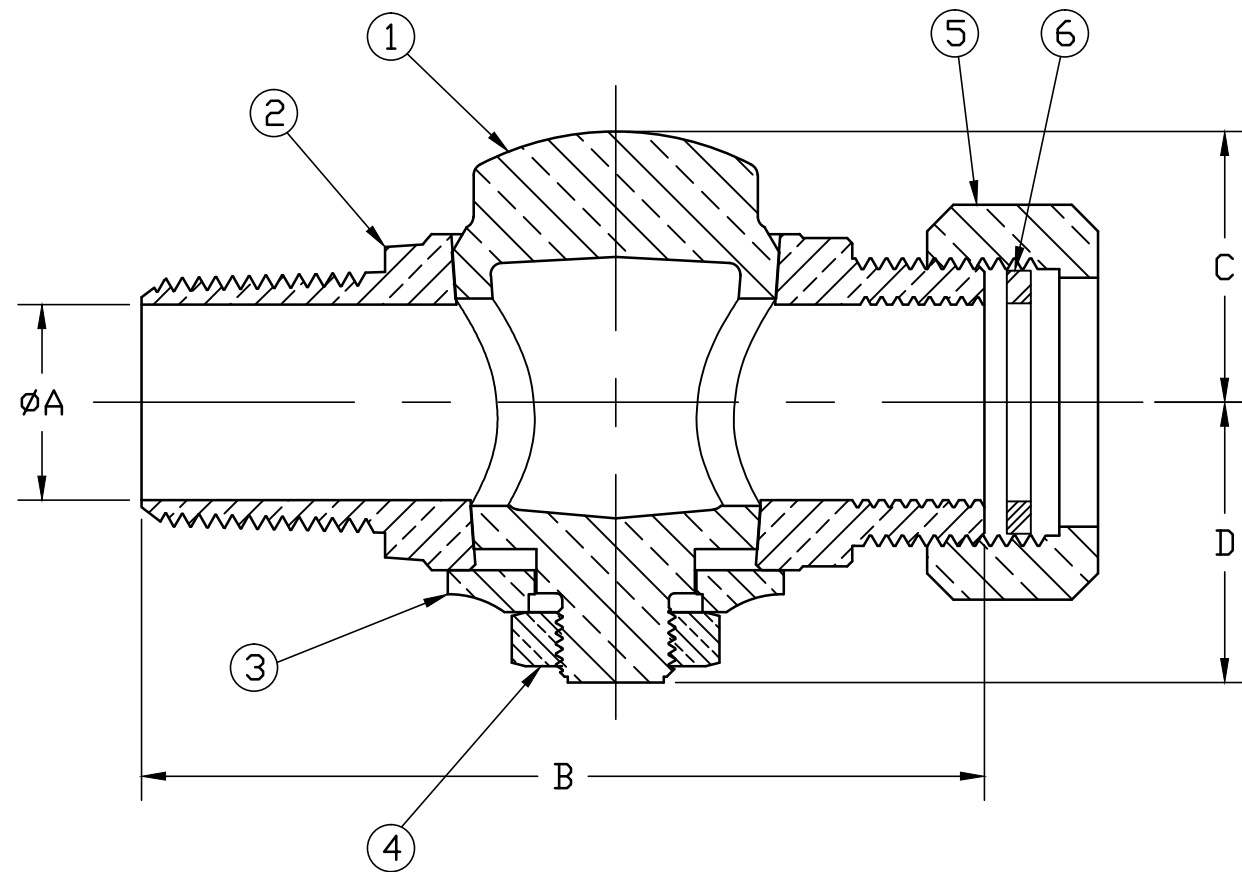


No.	DESCRIPTION	MATERIAL
1	KEY	CAST LOW LEAD BRASS ALLOY
2	BODY	CAST LOW LEAD BRASS ALLOY
3	KEY WASHER	CAST BRASS ASTM B62 ALLOY C83600
4	KEY NUT	CAST BRASS ASTM B62 ALLOY C83600
5	COUPLING NUT	CAST BRASS ASTM B62 ALLOY C83600
6	WASHER	VEGETABLE TANNED LEATHER



SIZE	øA	B	C	D
1"	1.016	4.390	1.410	1.460

NOTE: ALL WETTED PARTS ARE LOW LEAD BRASS ALLOY

FILEPATH: PROD-ENG\MUELLER\ASYSUBMITTALS\H9995N

						DRFTR	RWB	9/11/13	<b>Mueller Co.</b>	THIRD ANGLE PROJECTION 						
						CHKR										
						ENGR										
						MGR										
									UNLESS OTHERWISE NOTED	REF. No. SCALE NONE						
									SURFACE PREPARATION: BREAK CORNER(S) ---- .000 SURFACE FINISH -- XX RMS TOLERANCE(S): LINEAR ----- ± .000 ANGULAR ----- ± 0°00'							
									BY	DATE						
									STK No:							
									MAT'L:							
									DESCR.	CORPORATION STOP VALVE - LLB (AWWA IP x MUELLER COUPLING)						
										DWG NUMBER H9995N						
									REV	ECR	DESCRIPTION	DATE	BY	CHKR	PER EST NO: DXXXX	EST FIN WT = 0.0000 lbs

DWG NUMBER  
H9995N  
442-MRKTNG

TITLE TO AND OWNERSHIP OF THIS ENGINEERING DATA REMAINS IN Mueller Co. NO USE IS TO BE MADE OF THIS DATA EXCEPT AS SPECIFICALLY AUTHORIZED BY Mueller Co. ASSENT ON THE PART OF THE RECIPIENT TO THESE CONDITIONS IS PRESUMED