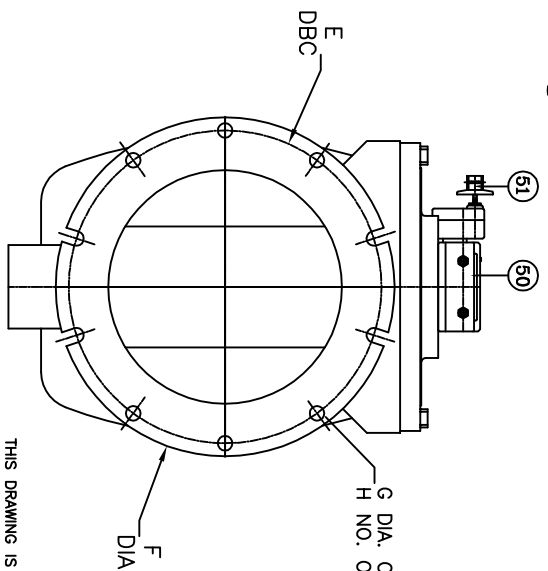
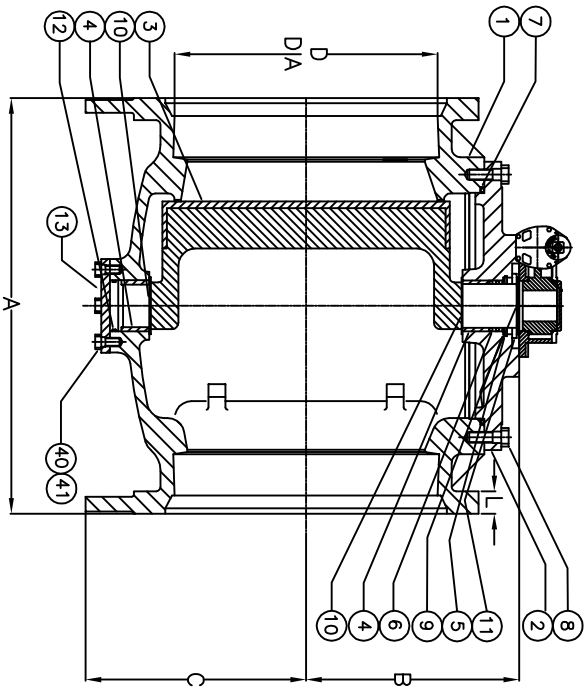
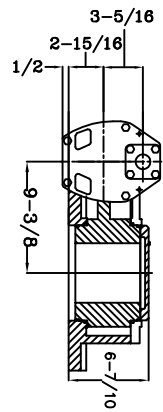
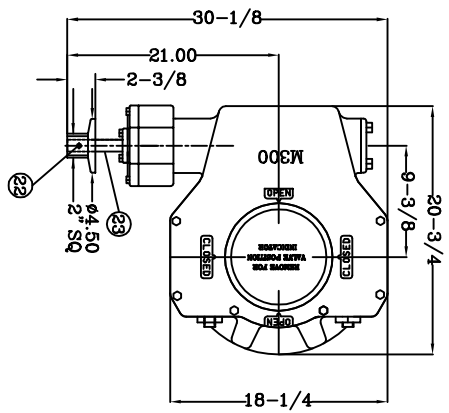
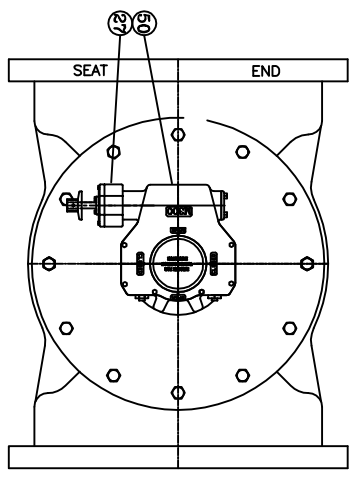


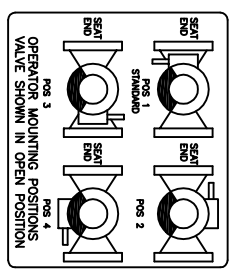
REFERENCE ONLY

DRAWINGS ARE FOR INFORMATION PURPOSES ONLY. PLEASE REQUEST CERTIFIED DRAWINGS BEFORE PREPARING PIPING DIAGRAMS



THIS DRAWING IS THE PROPERTY OF HENRY PRATT VALVE COMPANY AND MUST NOT BE USED IN ANY WAY PREJUDICIAL TO THEIR INTERESTS

VALVE SIZE	A	B	C	D	E	F	G	H	L
36	27.63	29	36	43.75	46	1.13	24	2	
42	27.63	29	42	50.63	53	1.38	28	2	



51	1	2" NUT	DUCTILE IRON
50	1	M-BURIED GEAR	-
41	AR	LOCKWASHER	STEEL/ZINC
40	AR	CAP SCREW	STEEL/ZINC
27	2	SPUR GEAR	-
23	1	GEAR STEM	STEEL SAE 1045
22	1	SPRINGPIN	STEEL
17	2	O-RING	BUA-N
13	1	TRUNION COVER	CAST IRON
12	1	O RING	ELAS. AS SPEC.
11	1	SUPPORT WASHER	STEEL
10	2	WASHER	PITE
9	1	WASHER	STEEL
8	AR	CAP SCREW	STEEL/ZINC
7	1	O RING	ELAS. AS SPEC.
6	2	U CUP SEALS	ELAS. AS SPEC.
5	2	RETAINING RING	SPRING STEEL
4	2	SLEEVE BEARING	BRONZE/SS
3	1	PLUG ELASTOMER AS SPEC.	A126 CL B
2	1	CAP	A126 CL B
1	1	BODY	A126 CL B

REV	DATE	REVISIONS	BY	TITLE
1				PRATT VALVE CO.

BY	DATE	SCALE
JC	09/09	NONE

CHK'D	DIMENSIONS
	INCHES

DWG. NO.
HP 49725

TITLE
3.6" AND 4.2" MJ ENDS, w/ M300 GEAR AND 2" NUT