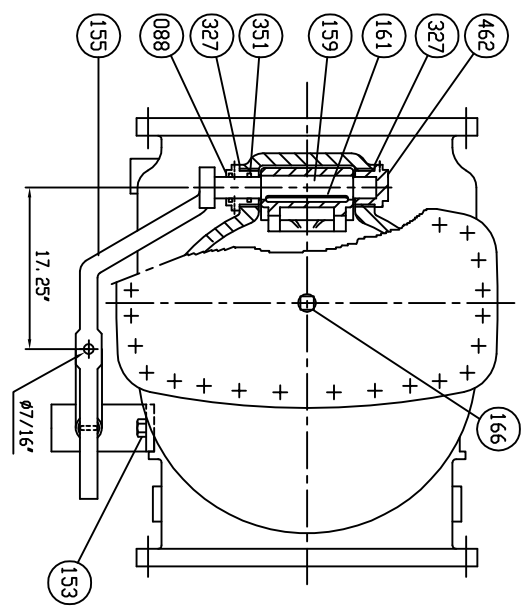
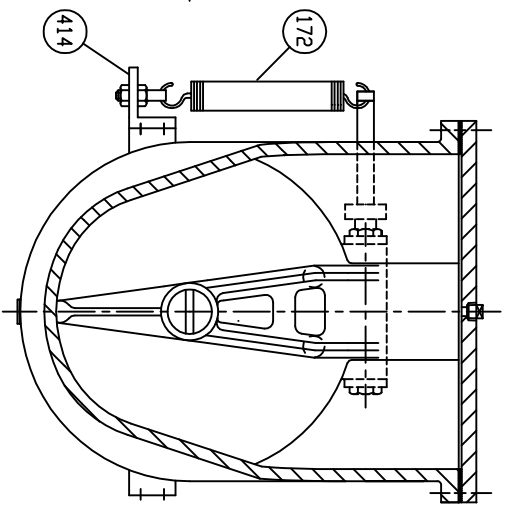
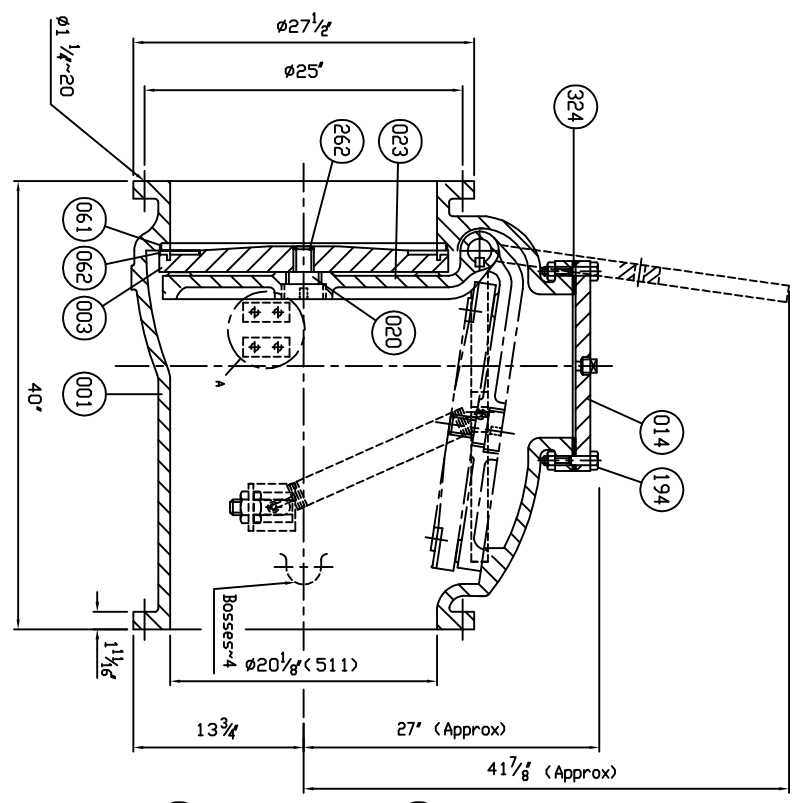
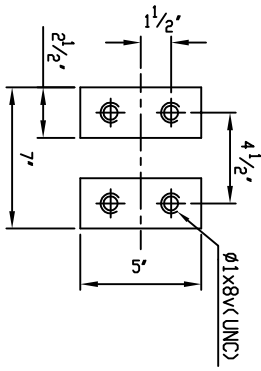
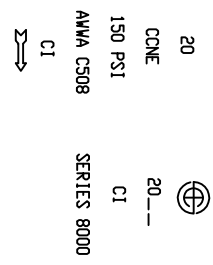


SUPPLIED WITH 8 MILS AMERLOCK 2 RED OXIDE EPOXY INTERIOR AND EXTERIOR OF THE VALVE

REFERENCE ONLY



Marking



Remark - Flanged dimensions follow ANSI B16.1 CL. 125

NO.	PARTS	MATERIAL	ASTM DESIGNATION	QTY
462	Retaining Plug	Brass	B 21	1
414	Arm B	Zinc Coated Steel	A 36	1 set
351	D-Ring	Rubber (Buna N)	D 2000 BK 707	2
327	Gasket	Rubber (Buna N)	D 2000 BK 807	2
324	Cover Gasket	Rubber (Buna N)	D 2000 BK 807	1
262	Disc Bolt	Stainless Steel	A 276 Type 304	1
194	Cover Bolt & Nut	Stainless Steel	A 276 Type 316	1 set
172	Spring	Zinc Coated Steel	A 36	1
166	Plug 1/2"	Stainless Steel	A 276 Type 304	1
161	Key	Stainless Steel	A 276 Type 304	1
159	Hinge Pin	Stainless Steel	A 276 Type 304	1
155	Weight Arm	Ductile Iron	A 536 Gr. 65-45-12	1
153	Bolt	Zinc Coated Steel	A 307 Grade B	2
088	Seat Nut	Brass	B 21	1
062	Disc Seat Ring	Rubber (Buna N)	D 2000 BK 807	1
061	Body Seat Ring	Bronze	B 62	1
023	Arm	Ductile Iron	A 536 Gr. 65-45-12	1
020	Sleeve	Stainless Steel	A 276 Type 304	1
014	Cover	Cast Iron	A 126 Class B	1
003	Disc	Cast Iron	A 126 Class B	1
001	Body	Cast Iron	A 126 Class B	1

TEST	TEST PRESSURE
HYDR SHELL	300 PSI.
HYDR VALVE SEAT	150 PSI.
HYDR BACK SEAT	PSI.
AIR SEAT	PSI.
STEAM	PSI.
WORKING PRESSURE	150 PSI.

MUELLER CO.

500 WEST ELDRIDGE ST. P.O. BOX 671 DECATUR, IL 62526
 PHONE: 217-423-4471

DATE: 03/19/13
 REF. DWG: USA1433C

TITLE: SIZE 20" SWING CHECK VALVE AMWA C508
 BRONZE BODY SEAT RING & BUNA N DISC SEAT RING
 WITH ONE LEVER AND SPRING

TYPE: A2602-6B1LS
 DWG NO. M80050
 REV.