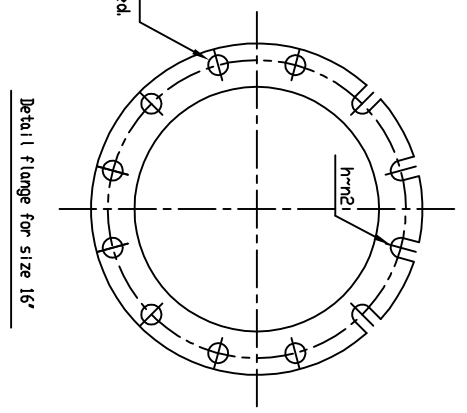
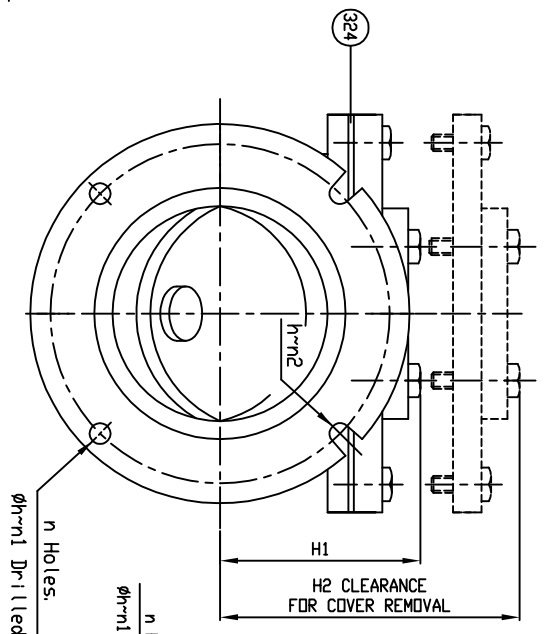
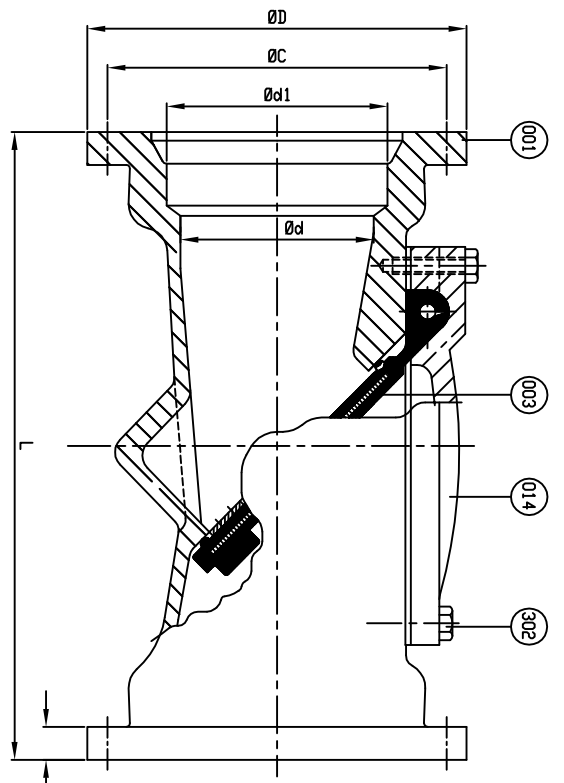
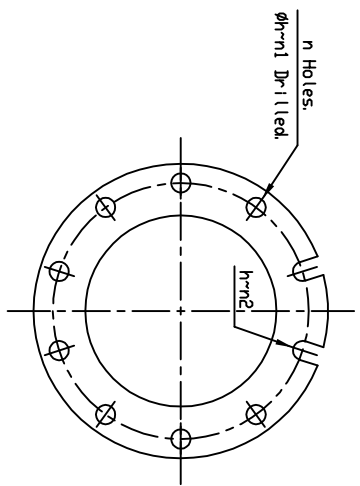
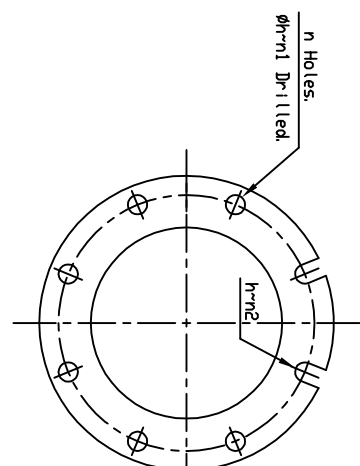
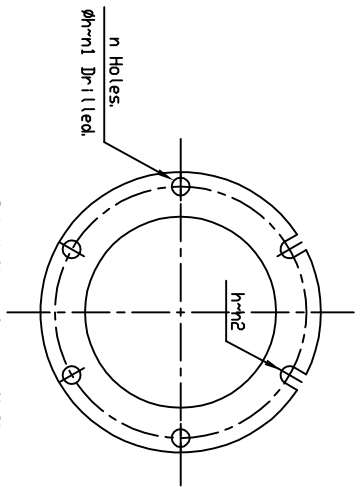


REFERENCE ONLY



NOTES:

- 1- VALVES SUPPLIED WITH 304SS COVER BOLTS
- 2- SUPPLIED WITH 8 MILS AMERLOCK 2 RED OXIDE EPOXY



Remark - Dimensions in inches
- End flanges mechanical joint conform to ANSI/AWWA C111/A21.11

SIZE	L	φD	φC	φd1	φh	n	h	n1	n2	T	H1	H2
1n (mm)												
3 (80)	13	7.69	6.19	4.06	3/4	4	3/4	2	2	0.94	3.90	4.69
4 (100)	14.96	9.12	7.50	4.90	7/8	4	7/8	2	2	1	4.65	5.63
6 (150)	19.3	11.12	9.50	7	7/8	6	7/8	4	2	1.06	6.22	7.28
8 (200)	23.81	13.37	11.75	9.15	7/8	6	7/8	4	2	1.12	7.80	8.98
10 (250)	28.34	15.69	14	11.20	7/8	8	7/8	6	2	1.19	10.20	11.54
12 (300)	33	17.94	16.25	13.30	7/8	8	7/8	6	2	1.25	11.38	12.80
14 (350)	35	20.31	18.75	15.44	7/8	10	7/8	8	2	1.31	12.00	13.89
16 (400)	37	22.56	21	17.54	7/8	12	7/8	8	4	1.38	13.58	15.16

NO.	PARTS	MATERIAL	ASTM DESIGNATION	QTY
324	Cover Gasket	Rubber (Buna N)	D 2000 BK 807	1
302	Cover Bolt	Stainless Steel	A 276 Type 304	1 set
014	Cover	Ductile Iron	A 536 Grade 65-45-12	1
003	Disc	Steel & Rubber/Buna N	A 36 & D 2000 BK 707	1
001	Body	Ductile Iron	A 536 Grade 65-45-12	1

HYDRD SHELL	500	PSI.
HYDRD VALVE SEAT <td>250 <td>PSI.</td> </td>	250 <td>PSI.</td>	PSI.
HYDRD BACK SEAT <td>— <td>PSI.</td> </td>	— <td>PSI.</td>	PSI.
AIR SEAT <td>— <td>PSI.</td> </td>	— <td>PSI.</td>	PSI.
STEAM <td>— <td>PSI.</td> </td>	— <td>PSI.</td>	PSI.
WORKING PRESSURE <td>250 <td>PSI.</td> </td>	250 <td>PSI.</td>	PSI.
TEST PRESSURE <td>— <td>PSI.</td> </td>	— <td>PSI.</td>	PSI.



SCALE	N.T.S.	DRG	JON COLPAN	DATE	10/18/10	REV.	001	DWG.	USA1845B
CHK		APP		EGN					

3" - 16" FIG. 850MJ MECHANICAL JOINT FLEX CHECK VALVE W/ (BUNA N) TRIM

TYPE	850MJ-1	DWG NO.	MS50635	REV.	1
------	---------	---------	---------	------	---