

**SECTION
D-1**

**STAINLESS STEEL
TAPPING SLEEVE**



UL / FM

Rev. 2-15

Shaded area indicates change

FIRE PROTECTION PRODUCTS

H-304 - Stainless Steel Tapping Sleeve

- Sizes-4"-24" main and outlet (see chart below for available size combinations).
- 304L Stainless steel, carbon steel, or ductile iron outlet flange which meets or exceeds all applicable requirements of ANSI B16.1, class 125 and in accordance with MSS-SP60; mechanical joint outlet fits directly on standard MJ connection (flange on sleeve outlet replaces MJ gland on connection.)
- Certified to ANSI/NSF 61.
- 3/4" NPT brass test plug (Stainless Steel optional).
- 4"-12" sizes--250 psig (1725 kPa/17 barg) maximum working pressure.
- 14"-24" sizes--200 psig (1400 kPa/14 barg) maximum working pressure.



H-304SS

How to determine a Mueller Tapping Sleeve Part Number

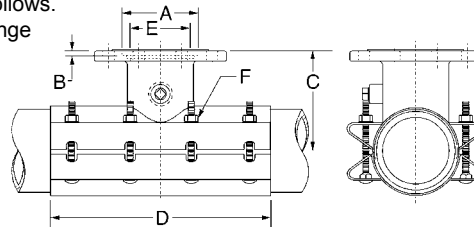
Select the appropriate numbers from the pipe information chart that follows.

Example: For 6"x6" with 7.30-7.50 O.D. Range and stainless steel flange
Resulting Part No. **0606H304SS0750**

* H-304 is constant for all Mueller Stainless Steel Tapping Sleeves listed here.

** SS = stainless steel, CS = carbon steel, DI = ductile iron

Main Size	Outlet Size	Model No.	Flange Material	Maximum O.D.
06	06	H-304*	SS**	0750



H-304MJ

Sleeve O.D. Range

Nominal Pipe Size	Outlet Flange	Sleeve O.D. Range (inches)
4"	4"	4.50 - 4.90
		4.80 - 5.00
6"	4", 6"	6.59 - 6.99
		6.89 - 7.30
		7.10 - 7.50
		7.40 - 7.80
8"	4", 6"	7.90 - 8.30
	4", 6", 8"	8.62 - 9.06
		9.04 - 9.45
		9.20 - 9.60
		9.60 - 10.00
10"	4", 6", 8"	9.90 - 10.30
	4", 6", 8", 10"	10.73 - 11.13
		11.05 - 11.45
		11.70 - 12.10
		12.00 - 12.40
12"	4", 8", 10", 12"	12.50 - 12.90
		13.16 - 13.56
		13.60 - 14.09
		14.10 - 14.58
		14.10 - 14.58
14"	4", 6", 8", 10", 12"	12.50 - 12.90
		13.16 - 13.56
		13.60 - 14.09
		14.10 - 14.58
		14.10 - 14.58
16"	4", 6", 8", 10", 12"	17.40 - 17.80
		17.54 - 17.94
		17.85 - 18.25
		18.15 - 18.55
		18.60 - 19.00
18"	4", 6", 8", 10", 12"	19.30 - 19.70
		19.70 - 20.10
		19.70 - 20.10
20"	4", 6", 8", 10", 12"	21.40 - 21.80
		21.90 - 22.30
		22.30 - 22.70
24"	4", 6", 8", 10", 12"	23.30 - 23.70
		23.80 - 24.10
		25.60 - 26.00

Size	Main Outlet	Outlet Flange Dimensions (in.)		Sleeve Dimensions (in.)			Bolts Per Side
		A	B	C	D	E	
4"	4"	5.0315	.25	7.00	15.00	4.00	4
6"	4"	5.0315	.25	7.50	15	4.50	4
6"	6"	7.0315	.31	8.00	15	4.50	4
8"	4"	5.0315	.25	8.50	15	4.50	4
8"	6"	7.0315	.31	9.00	15	6.50	4
8"	8"	9.0315	.31	9.50	18	8.00	6
10"	4"	5.0315	.25	10.00	15	4.50	4
10"	6"	7.0315	.31	10.50	15	6.50	4
10"	8"	9.0315	.31	11.00	18	8.50	6
10"	10"	11.0315	.31	11.50	24	10.00	8
12"	4"	5.0315	.25	12.00	15	4.50	4
12"	6"	7.0315	.31	12.00	15	6.50	4
12"	8"	9.0315	.31	12.00	18	8.50	6
12"	10"	11.0315	.31	12.00	24	10.50	8
12"	12"	13.0315	.31	12.00	30	12.00	8
14"	4"	5.0315	.25	13.63	15	4.50	4
14"	6"	7.0315	.31	13.63	15	6.50	4
14"	8"	9.0315	.31	13.63	18	8.50	6
14"	10"	11.0315	.31	13.63	24	10.50	8
14"	12"	13.0315	.31	13.63	30	12.50	8
16"	4"	5.0315	.25	14.59	15	4.50	4
16"	6"	7.0315	.31	14.59	15	6.50	4
16"	8"	9.0315	.31	14.59	18	8.50	6
16"	10"	11.0315	.31	14.59	24	10.50	8
16"	12"	13.0315	.31	14.59	30	12.50	8
18"	4"	5.0315	.25	16.00	15	4.50	4
18"	6"	7.0315	.31	16.00	15	6.50	4
18"	8"	9.0315	.31	16.00	18	8.50	6
18"	10"	11.0315	.31	16.00	24	10.50	8
18"	12"	13.0315	.31	16.00	30	12.50	8
20"	4"	5.0315	.25	16.88	15	4.50	4
20"	6"	7.0315	.31	16.88	15	6.50	4
20"	8"	9.0315	.31	16.88	18	8.50	6
20"	10"	11.0315	.31	16.88	24	10.50	8
20"	12"	13.0315	.31	16.88	30	12.50	8
24"	4"	5.0315	.25	19.00	24	4.50	8
24"	6"	7.0315	.31	19.00	24	6.50	8
24"	8"	9.0315	.31	19.00	24	8.50	8
24"	10"	11.0315	.31	19.00	24	10.50	8
24"	12"	13.0315	.31	19.00	30	12.50	10

Mueller tapping sleeves, cut-in sleeves and crosses meet applicable AWWA Standards. Currently, there are no UL listings nor standards for these products.

†With MJ option, this flange is replaced by an integral SS outlet pipe extension and MJ gland welded permanently in place allowing the sleeve to bolt directly to the outlet of any standard MJ valve. Dimensions for MJ option are compatible with standard connections, and A and B dimensions in chart do not apply.