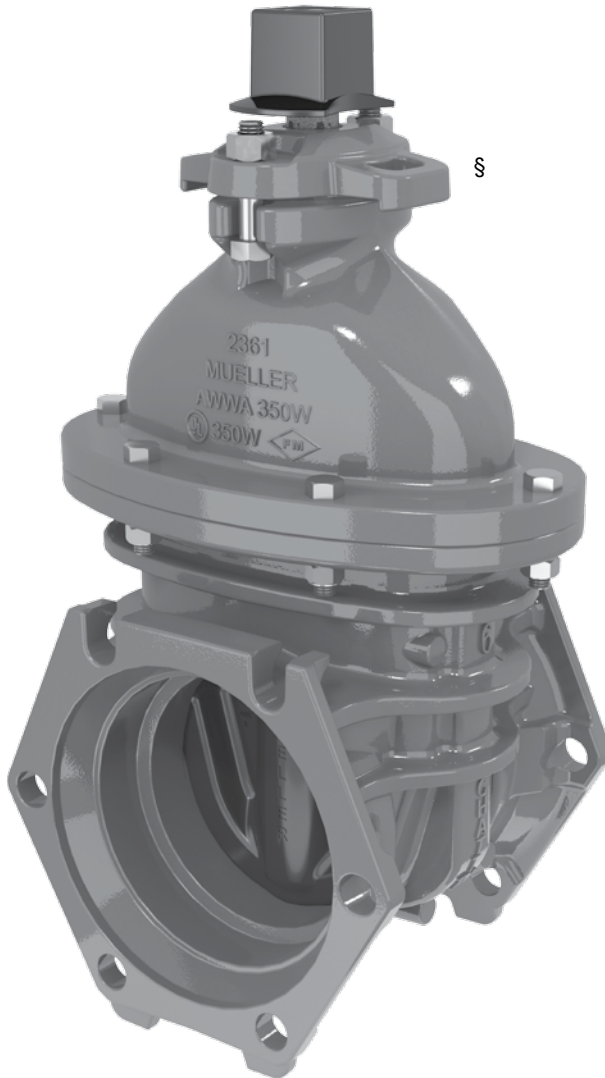


MUELLER 2300 Series Resilient Wedge Gate Valves

Mueller Resilient Wedge Gate Valves have features to make them easier to operate, preserve sealing capability, and interior coating integrity for many years of reliable service. In addition to popular end connection options, Mueller brand RW valves can be ordered with Mueller’s exclusive AquaGrip® System that incorporates an o-ring sealed compression connection and integral pipe restraint in one “ready to use” easy and quick to install package.

Mueller 4" – 12" 2361 Series Resilient Wedge Gate Valve Features



- 350 PSIG (2400 kPa/24 barg) MAXIMUM WORKING PRESSURE – Hydrostatically tested at 700 psig (4800 kPa/48 barg).
- DUAL-PURPOSE LIFTING LUGS – new dual-purpose lifting lugs provide stability for the valve box. Accommodates strap or hooks; provides valve box alignment, eliminating need for valve box adapter.
- AMERICAN MADE QUALITY – factory in Chattanooga, TN with ISO 9001 certification. Certified to ANSI/NSF 61 & 372. Manufactured and tested in compliance with ANSI/AWWA Standard C515. UL 262 Listed and FM 1120/1130 Approved.
- DUCTILE IRON - Valve body, bonnet, disc, stuffing box, and op nut.
- T-HEAD BOLT RETENTION – improved T-head bolt retention feature eliminates need for anti-rotation bolts.
- TRIPLE O-RING SEALS – two above thrust collar and one below, retain lubricant in this critical area. Top two are replaceable with valve fully open and under pressure. Fourth O-ring serves as dirt seal.
- TWO ANTI-FRICTION WASHERS WITH LUBRICATION – made of polymer, one above and one below the thrust collar, reduce operating torque to open or close valve.
- STEM – forged manganese bronze bar stock is upset, then machined to form a thrust collar for superior strength in this critical area.
- GUIDE CAP BEARINGS – made of polymer and snapped over rubber covered wedge guides, provide bearing surfaces that protect both wedge and interior body coating from wear and aid in easy operation – even the largest valves installed horizontally. Rollers, tracks and scrapers are not needed.
- SMOOTH, OVERSIZED FLOW WAY – full, round, unobstructed flow way accommodates full size cutters, provides superior flow characteristics and reduces pumping costs.**
- MUELLER PRO-GARD® FUSION BONDED EPOXY COATING – 10 mils* thick protects all inside and outside iron surfaces, and complies with AWWA C550.
- INTEGRAL LEGS – stands upright for easier handling and storage.
- 10-YEAR LIMITED WARRANTY – assured reliability (see separate Mueller Warranty document for terms).
- MUELLER VALVES ARE DESIGNED FOR POTABLE WATER APPLICATIONS.

*Nominal

**16" valve requires 1/2" undersized cutter, 54" valve requires 48" cutter

Mueller 14" – 54" 2361 Series Resilient Wedge Gate Valve Features

In addition to all the features of the smaller 2361 series valves, large size Mueller 2361 series RW valves offer these features:

- STEM – 18"-54" manganese bronze casting with integral thrust collar.



SIZE	AWWA C515 WORKING PRESSURE	UL WORKING PRESSURE	FM WORKING PRESSURE
14"-16"	250	250	250
18"-24"	250	175*	-
30"-48"	250	-	-
54"	250†	-	-

† AWWA C515 does not recognise valves larger than 48"

* UL Listed without gearing

Certified to NSF 61 & 372