

MUELLER 110[®] COMPRESSION INFORMATION

Tubing, pipe and liners used with MUELLER 110 Compression Connection

Nominal size of connection	Material*	Tubing or pipe O.D. range - inches	Tubing or pipe wall thickness range - inches	Tubing or pipe I.D. range - inches	Liner part number
1/2" CTS	Type "K" copper	0.622 - 0.628	0.045 - 0.053	-	-
3/4" CTS	Type "K" copper	0.872 - 0.878	0.061 - 0.069	-	-
	Polyethylene	0.871 - 0.879	0.097 - 0.107	0.657 - 0.685	504281
1" CTS	Type "K" copper	1.121 - 1.129	0.061 - 0.069	-	-
	Polyethylene	1.120 - 1.130	0.125 - 0.137	0.846 - 0.880	504385
1-1/4" CTS	Type "K" copper	1.371 - 1.379	0.060 - 0.070	-	-
	Polyethylene	1.370 - 1.380	0.153 - 0.168	1.034 - 1.074	505142
1-1/2" CTS	Type "K" copper	1.621 - 1.630	0.067 - 0.077	-	-
	Polyethylene	1.619 - 1.631	0.181 - 0.199	1.221 - 1.269	506139
2" CTS	Type "K" copper	2.120 - 2.130	0.076 - 0.090	-	-
	Polyethylene	2.119 - 2.131	0.236 - 0.260	1.599 - 1.659	506141
3/4" IPS	3/4" Sch. 80 PVC	1.046 - 1.054	0.154 - 0.174	0.698 - 0.746	509760
1" IPS	1" Sch. 80 PVC	1.310-1.320	0.179-0.200	-	-

*Type "K" soft copper tubing per ASTM B88; CTS polyethylene (PE) per ASTM D-2737 - SDR-9; IPS polyethylene (PE) per ASTM D-2239 - PE SDR-7; IPS polyvinylchloride (PVC) per ASTM D1785

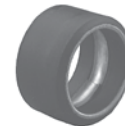


Liner

MUELLER 110 Compression Connection replacement parts

Size	Kit	Gasket part number†	Connection nut
1/2" CTS		681516	147542
3/4" CTS	682600	581949	507831
1" CTS	682601	581951	507835
1-1/2" CTS		581955	507847
2" CTS		581957	507851
3/4" IPS PE		89599	508826
1" IPS PE		89788	508827

†Gasket and gripper band assembly



Gasket



Nut

Adapter Nut for pre-1976 style Mueller 110 Compression Connection for CTS tubing

Kit includes one standard Gasket (same used with current style 110 connections) and a special Nut that adapts to the older style connection threads on the fittings. It is installed in the same way as the current style connection (Gasket conductor spring should be toward fitting body).

Size	Connection kit
3/4" CTS	682552
1" CTS	682551



Mueller 110[®] Compression - Electrical Thaw Connection

Size	Nuts with Set Screw	Gaskets only
3/4"	92655	581949
1"	92656	581951
1-1/2"	92657	581955
2"	92658	581957

