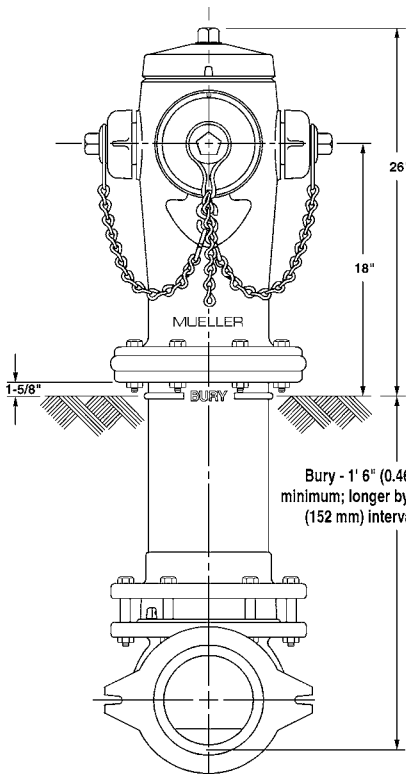


Rev. 4-14 Shaded area indicates changes

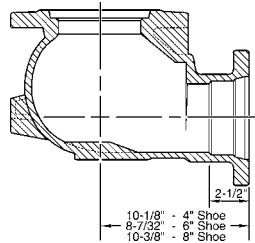
- **Catalog numbers -**
A-441 5-1/4" main valve opening 2-way (2 hose nozzles)
A-442 5-1/4" main valve opening 3-way (2 hose nozzles and 1 pumper nozzle)
- Modern, sleek exterior design
- Meets all applicable parts of ANSI/AWWA C502 Standard
- Post type dry barrel design
- Dry top design with O-ring sealed oil reservoir
- Traffic feature with stainless steel safety stem coupling
- Compression type main valve closes with pressure for positive seal; it is made of rubber and is conveniently reversible providing a spare for long service life
- Operating nut available in wide variety of shapes and sizes
- Field replaceable hose and pumper nozzles
- Hose and pumper nozzles have large radius, full flow openings for low friction loss
- Contoured shoe is designed for full flow
- Dual bronze drain valves provide effective barrel drainage
- 250 psig (1725 kPa/17 barg) maximum working pressure, 500 psig (3450 kPa/35 barg) test pressure



Dimensions

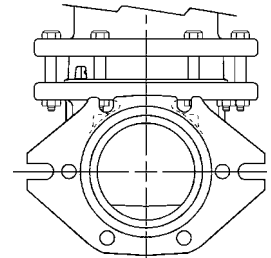


Mechanical joint standard and D-150

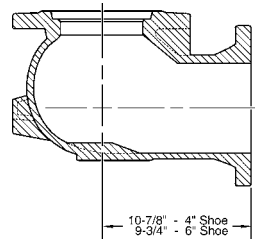


Non-rotating bolt design: cast-in pads eliminate need for anti-rotation bolts.

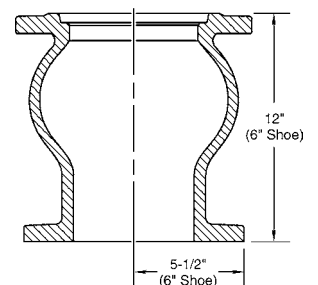
Front view detail of Mechanical joint (Standard only)



Flange
ASME B16.1 Class 125
PN 10/16 Drilling



Vertical Flange



Slip-on

