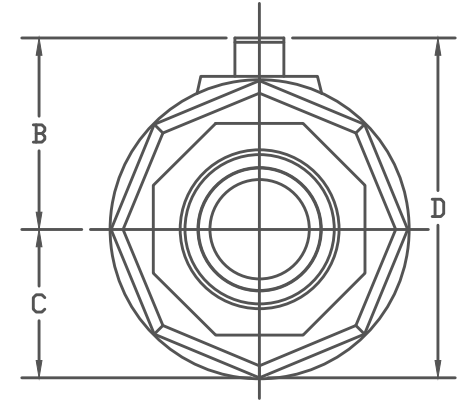
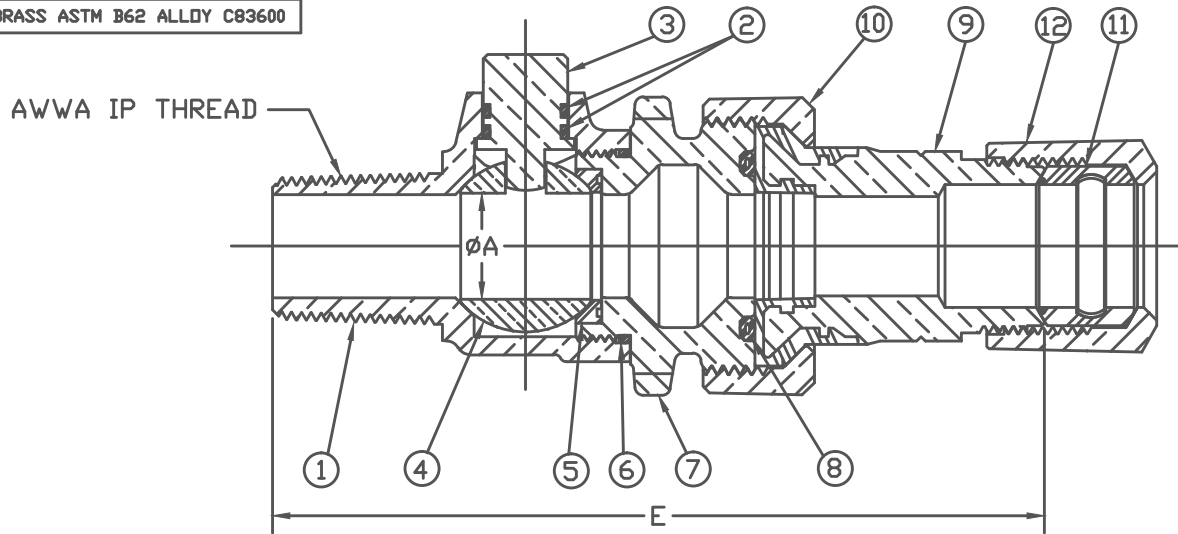


No.	DESCRIPTION	MATERIAL
1	BODY	CAST LOW LEAD BRASS ALLOY
2	O-RING	EP RUBBER ASTM D2000
3	STEM	LOW LEAD BRASS ALLOY
4	BALL	LOW LEAD BRASS ALLOY
5	GASKET	NITRILE RUBBER ASTM D2000
6	O-RING	EP RUBBER ASTM D2000
7	END PIECE	CAST LOW LEAD BRASS ALLOY
8	O-RING	NITRILE RUBBER ASTM D2000
9	INS. TAILPC ASS'Y	LOW LEAD BRASS ALLOY w/ MOLDED NYLON
10	COUP. NUT	CAST BRASS ASTM B62 ALLOY C83600
11	CTS GSKT ASSY	SBR RUBBER ASTM D2000
12	CONN. NUT	CAST BRASS ASTM B62 ALLOY C83600

SIZE	ØA	B	C	D	E
3/4"	.750	1.391	1.078	2.469	5.599
1"	1.000	1.591	1.353	2.944	6.334
2"	2.010	2.558	2.165	4.723	8.988



NOTE: ALL WETTED PARTS ARE LOW LEAD BRASS ALLOY

FILEPATH: PROD-ENG\MUELLER\ASYSUBMITTALS\N35028N

				DRFTR	Garvir	3/6/12	Mueller Co.	
				CHKR				
				ENGR				
				MGR				
				BY		DATE	UNLESS OTHERWISE NOTED	THIRD ANGLE PROJECTION
				STK No:			SURFACE PREPARATION:	REF. No.
				MAT'L:			BREAK CORNER(S) ---- .000	
				DESCR:		BALL CORPORATION VALVE ASS'Y - LLB	SURFACE FINISH -- XX RMS	SCALE
				PART NUMBER		N35028N	TOLERANCE(S):	NONE
				PER EST NO: XXXXX		EST FIN WT = 0.0000 lbs	LINEAR ----- ± .000	
							ANGULAR ----- ± 0°00'	

PART NUMBER
N35028N
442-MRKTG