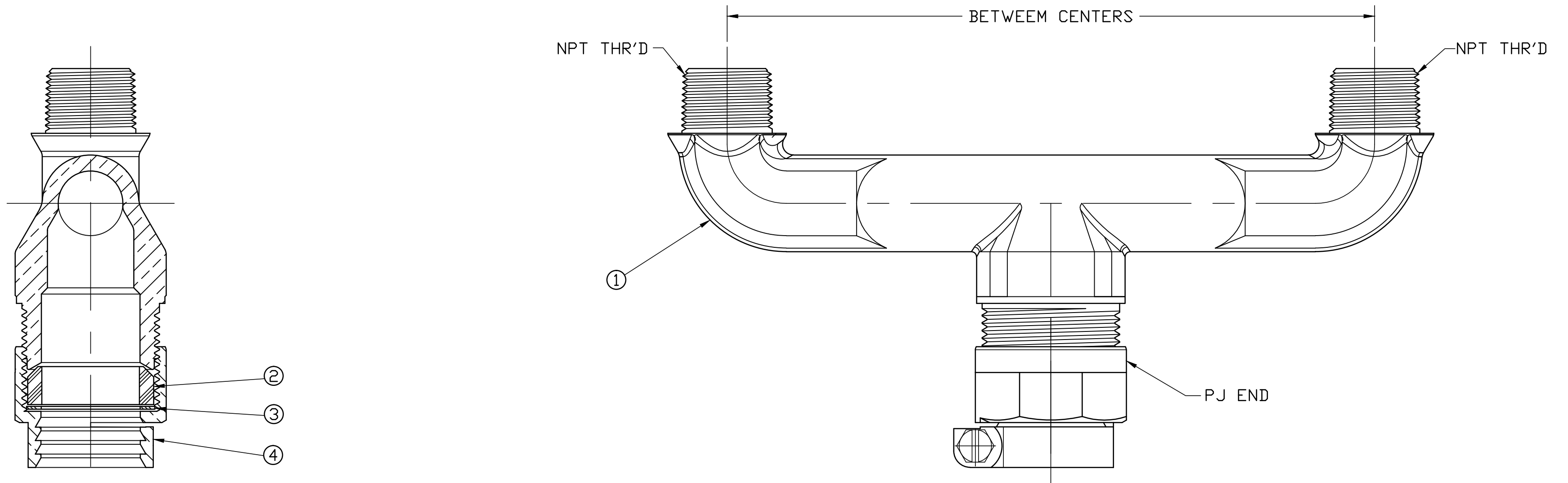


DWG NUMBER  
P15363N

44-MRKTNG

No.	DESCRIPTION	MATERIAL
1	BRANCH	CAST LOW LEAD BRASS ALLOY
2	PJ GASKET	ASTM D2000 (BUNA N)
3	PJ WASHER	POLYPROPYLENE
4	PJ CPLG NUT	CAST BRASS ASTM B62 ALLOY C83600

PJ SIZE	NPT SIZE	BRANCH BETWEEN CENTERS
3/4"	3/4"	7-1/2"
1"	3/4"	6-1/2"
1"	3/4"	7-1/2"
1"	3/4"	13-1/2"
1-1/2"	3/4"	7-1/2"
1"	1"	7-1/2"
1-1/2"	1"	7-1/2"



ALL WETTED PARTS ARE LOW LEAD BRASS ALLOY

FILEPATH: PROD-ENG\MUELLER\ASYSUBMITTALS\P15363N

DRFTR	RWB	8/16/13	<b>Mueller Co.</b>	UNLESS OTHERWISE NOTED SURFACE PREPARATION: BREAK CORNERS) ---- .000 SURFACE FINISH -- XX RMS TOLERANCE(S): LINEAR ----- ± .000 ANGULAR ----- ± 0°00'	THIRD ANGLE PROJECTION 
CHKR					
ENGR					
MGR					
BY	DATE		REF. No.	SCALE	
STK No:				NONE	
MAT'L:					
DESCR.	LLB U-BRANCH CONNX. PJ CTS x MIP x MIP			PART NUMBER P15363N	
REV	ECR	DESCRIPTION	DATE	BY	CHKR
PER EST NO: XXXXX EST FIN WT = 0.0000 lbs					

TITLE TO AND OWNERSHIP OF THIS ENGINEERING DATA REMAINS IN MUELLER CO. NO USE IS TO BE MADE OF THIS DATA EXCEPT AS SPECIFICALLY AUTHORIZED BY MUELLER CO. ASSENT ON THE PART OF THE RECIPIENT TO THESE CONDITIONS IS PRESUMED.