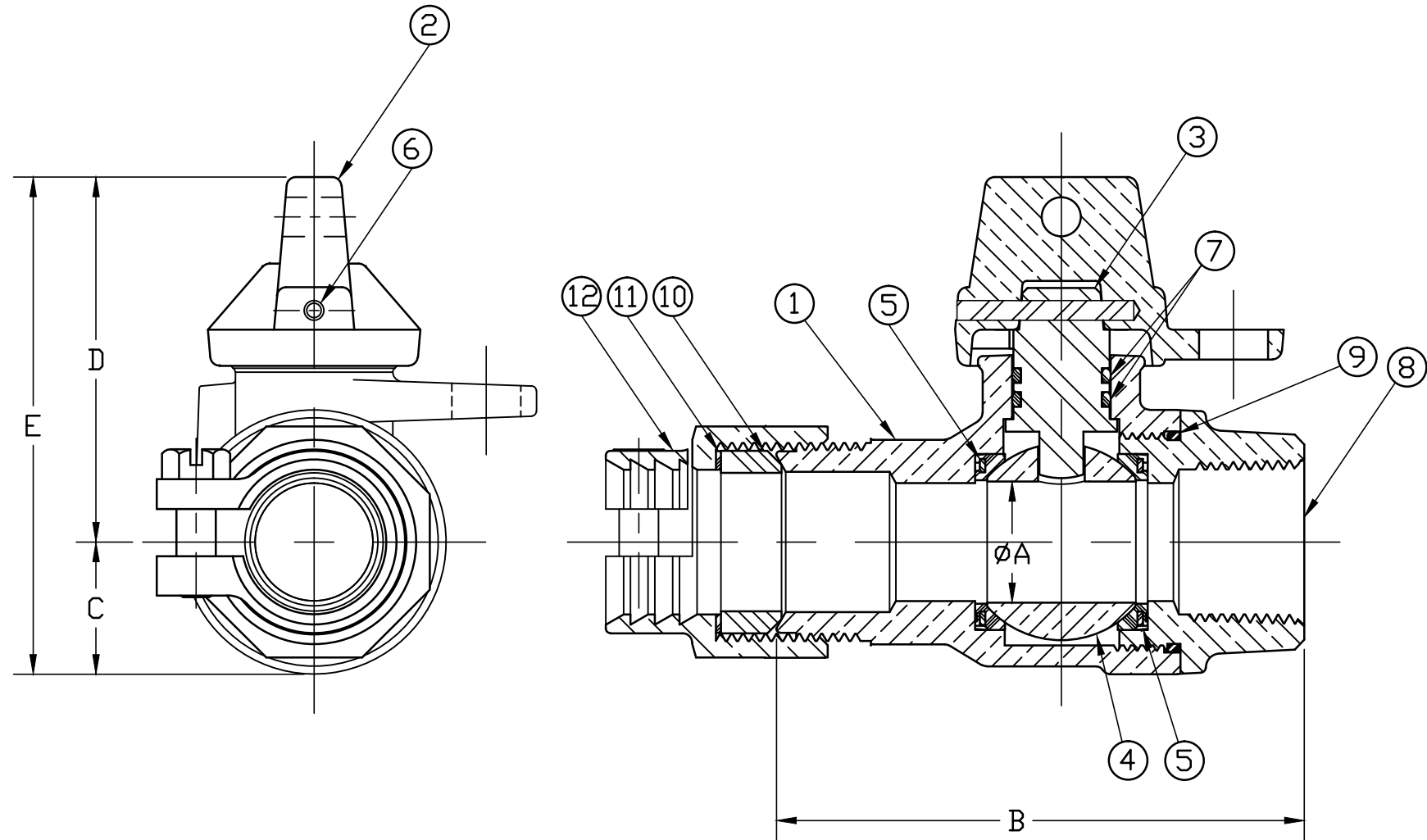


No.	DESCRIPTION	REQ'D	MATERIAL DESCRIPTION
1	BODY	1	CAST LOW LEAD BRASS ALLOY
2	CAP	1	CAST BRASS ASTM B62 ALLOY C83600
3	STEM	1	LOW LEAD BRASS ALLOY
4	BALL	1	LOW LEAD BRASS ALLOY
5	GASKET	2	ASTM D2000 (NITRILE)
6	SOLID PIN	1	AISI 303 STAINLESS STEEL
7	O-RING	2	ASTM D2000 (EP)
8	END PIECE	1	CAST LOW LEAD BRASS ALLOY
9	O-RING	1	ASTM D2000 (EP)
10	PJ GASKET	1	ASTM D2000 (BUNA N)
11	WASHER	1	POLYPROPYLENE
12	CLPG NUT SUB	1	CAST BRASS ASTM B62 ALLOY C83600

SIZE	ØA	B	C	D	E
3/4"	.75	3.35	.84	2.32	3.16
3/4"R	.63	3.35	.84	2.32	3.16
1"R	.77	4.51	1.15	2.57	3.72
1"	1.00	4.51	1.15	2.57	3.72
1 1/2"	1.50	4.69	1.66	3.34	5.00
2"	2.00	5.24	2.00	3.89	5.89



ALL WETTED PARTS ARE LOW LEAD BRASS ALLOY

FILEPATH: PRD-ENG\MUELLER\APPROVED\P25170N

DWG NUMBER
P25170N
MRKTNG

TITLE TO AND OWNERSHIP OF THIS ENGINEERING DATA REMAINS IN Mueller Co. NO USE IS TO BE MADE OF THIS DATA EXCEPT AS SPECIFICALLY AUTHORIZED BY Mueller Co. ASSENT ON THE PART OF THE RECIPIENT TO THESE CONDITIONS IS PRESUMED

DRFTR	RWB	8/16/13	Mueller Co.		
CHKR					
ENGR					
MGR					
			UNLESS OTHERWISE NOTED	THIRD ANGLE PROJECTION	
			SURFACE PREPARATION:		
			BREAK CORNER(S) ---- .000		
			SURFACE FINISH ---XXX RMS	REF. No.	
			TOLERANCE(S):	SCALE	
			LINEAR ----- ± .000	FULL	
			ANGULAR ----- ± 0°00'		
			STK No:		
			MAT'L:		
			DESCR.		
			INLINE LLB BALL METER VALVE	DWG NUMBER	
			CTS PJ x FIP	P25170N	
REV	ECR	DESCRIPTION	DATE	BY	CHKR
PER EST NO: DXXXX EST FIN WT = 0.0000 lbs					