

# MUELLER® E-5™ DRILLING AND MACHINE REPAIR PARTS AND REPAIR KIT

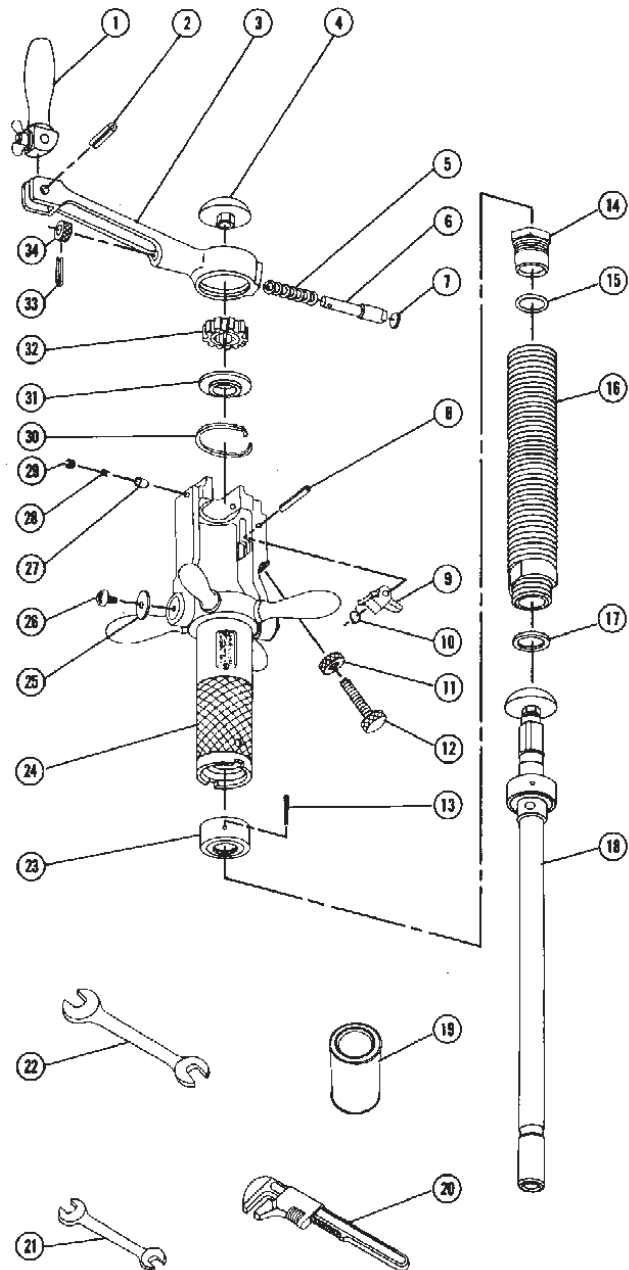
**Mueller Co.**

# 2.7

Rev. 8-04

Item No.	Part Number	Part Name
1	80085	Crank handle
2	500635	Handle pin
3	51484	Handle
4	83431	Knob
5	37883	Spring
6	51426	Ratchet dog
7	51427	Plug
8	502027	Pivot arm pin
9	502025	Pivot arm
10	502026	Pivot arm spring
11	502029	Lock nut
12	502028	Operating screw
13	48130	Friction collar pin
14	51432	Packing gland
15	46726	O-ring
16	503159	Body
17	47756	Body gasket
18	580999	Boring bar complete
19	88366	Cutting grease
20	91664	Wrench
21	59787	Wrench
22	96536	Wrench
23	580610	Friction collar
24	580895	Feed tube and yoke
25	50133	Washer
26	79745	Retaining screw
27	500851	Detent pin
28	59810	Spring
29	305006	Screw
30	51428	Retaining ring
31	503163	Wheel bushing
32	503162	Ratchet wheel
33	500803	Operating pin
34	37863	Detent knob

Operating instruction manual form number 9335; page 2.3



## Repair Kit

Item No.	Part Number	Part Name
	<b>681846</b>	<b>Complete Kit; includes following:</b>
13	48130	Friction collar pin (1)
15	46726	O-ring (1)
17	47756	Body gasket (1)
19	88366	Cutting grease (1)
23	580610	Friction collar (1)

Storage chest 580971  
(not illustrated)

NOTE: These illustrations are for parts identification only. DO NOT use these illustrations for assembly or disassembly of machine. MUELLER CO. offers a machine repair service. Contact MUELLER® Customer Service Center for details.

**TO ORDER SPECIFY QUANTITY, PART NUMBER AND PART NAME  
(include catalog number and model number of machine)**