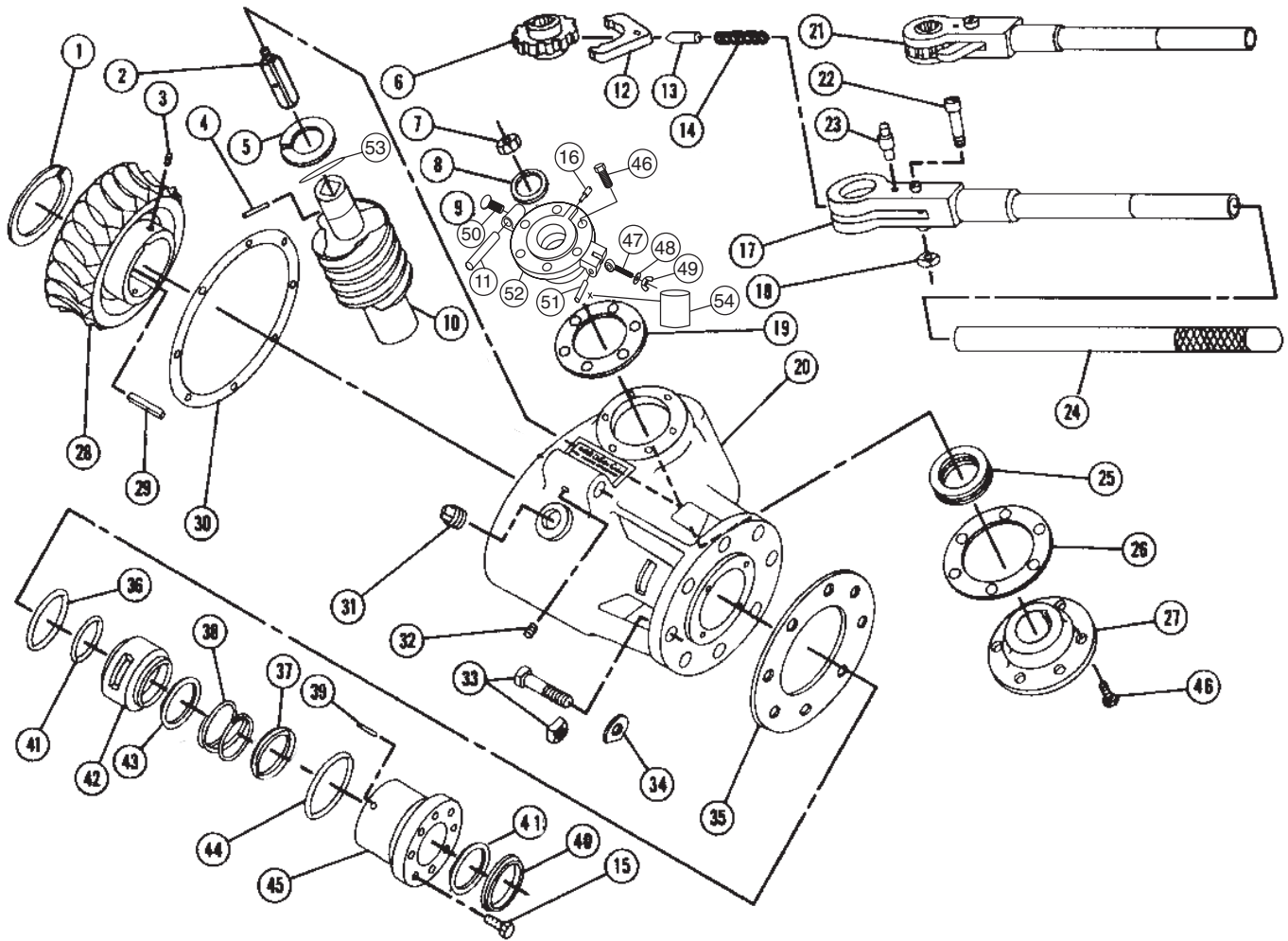


# 3.14



# MUELLER® C1-36-99002 DRILLING MACHINE REPAIR PARTS

Rev. 8-04 Shaded area indicates change



NOTE: These illustrations are for parts identification only. DO NOT use these illustrations for assembly or disassembly of machine. MUELLER CO. offers a machine repair service. Contact MUELLER® Customer Service Center for details.

Item No.	Part Number	Part Name	Item No.	Part Number	Part Name	Item No.	Part Number	Part Name
1	54426	Thrust washer	17	80111	Handle	35	55449	Gasket
2	507160	Drive shaft	18	46255	Nut	36	508429	O-ring
3	90472	Set screw	19	55467	Top bearing gasket	37	44245	Convex follower
4	507162	Rollpin	20	526512	Drive box	38	98000	Spring
5	54472	Thrust washer	21	85308	Ratchet complete	39	47092	Rollpin (2)
6	40137	Ratchet wheel	22	40138	Bolt	40	501158	Wiper ring
7	94825	Nut	23	40139	Stud	41	508430	O-ring (2)
8	78827	O-ring	24	86391	Handle extension	42	508427	Spacer
9	580815	Top bearing complete (includes: 8, 11,16,46, 47, 48, 49, 50, 51, 52)	25	55541	Ball bearing	43	45115	Packing ring (4)
10	507161	Worm	26	55478	Bottom bearing gasket	44	52162	Gland seal o-ring
11	54488	Pivot	27	54443	Bottom bearing	45	501151	Packing gland
12	40004	Ratchet dog	28	55563	Worm gear	46	55098	Socket head cap screw (6)
13	40006	Spring pin	29	54467	Key	47	52389	Eyebolt
14	40007	Spring	30	55609	Gasket	48	54012	Washer
15	55098	Hex cap screw (4)	31	64134	Plug	49	94341	Wing Nut
16	72484	Latch	32	98957	Set screw	50	91665	Thumb Screw
			33	56682	Bolt and nut (8)	51	48131	Roll Pin
			34	55409	Washer (8)	52	502707	Bearing

\* Order both parts when replacing either one.