

IRON METER YOKES (SEE NOTE AT BOTTOM OF PAGE) AND EQUIPMENT

Mueller Co.

8B.1

Rev. 9-09



Iron meter yoke for 5/8" meters

H-5010

Catalog size	5/8
Meter size	5/8



Iron meter yoke for 5/8" meters
With stabilizing prongs to support yoke on 3/4" iron pipe stakes when yoke is attached to plastic service lines.

H-5010P

Catalog size	5/8
Meter size	5/8



Iron meter yoke for 5/8"x3/4" meters

H-5020

Catalog size	5/8x3/4
Meter size	5/8x3/4



Iron meter yoke for 5/8"x3/4" meters. With stabilizing prongs to support yoke on 3/4" iron pipe stakes when yoke is attached to plastic service lines.

H-5020P

Catalog size	5/8x3/4
Meter size	5/8x3/4



Iron meter yoke for 3/4" meters

H-5030

Catalog size	3/4
Meter size	3/4



Iron meter yoke for 3/4" meters
With stabilizing prongs to support yoke on 3/4" iron pipe stakes when yoke is attached to plastic service lines.

H-5030P

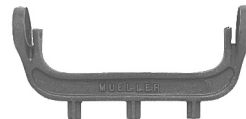
Catalog size	3/4
Meter size	3/4



Iron meter yoke for 1" meters

H-5040

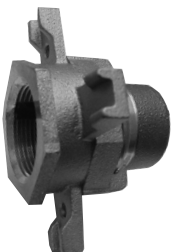
Catalog size	1
Meter size	1



Iron meter yoke for 1" meters
With stabilizing prongs to support yoke on 3/4" iron pipe stakes when yoke is attached to plastic service lines.

H-5040P

Catalog size	1
Meter size	1



Expansion handwheel

Three piece, O-ring sealed for positive, trouble free operation.

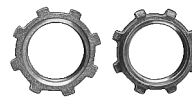
H-14234

Catalog size	5/8	3/4	1
Meter size	5/8	5/8x3/4, 3/4	1

For optional Garlock gasket (white) at meter end, add suffix 990006"

The lock nuts needed for attaching valves and couplings to the yoke are supplied with each valve or coupling. Lock nuts have durable rubber gaskets to seal the meter to the yoke ends. Additional lock nuts and gaskets can be ordered separately. Since the lock nut threading on valves, stops and couplings is uniform, lock nuts are easily switched when making a changeover from 5/8" meters to 5/8"x3/4" and 3/4" water meters.

Note: A complete assembly consists of a bar and expansion wheel from this page and inlet and outlet fittings from this section (8B).



Part number	Catalog size	Meter size
509326	5/8	5/8
509316	3/4	5/8x3/4, 3/4
526268	1	1
310814	5/8	5/8
310502	3/4	5/8x3/4, 3/4
311335	1	1

MUELLER Couplings are manufactured and tested in accordance with ANSI/AWWA C800.

8B - C.I. YOKES