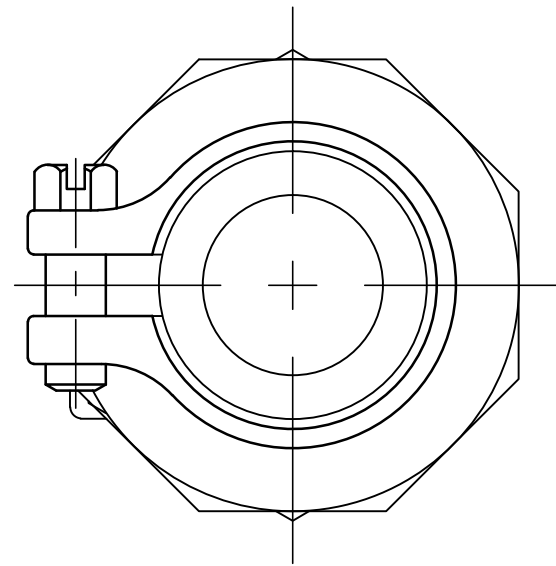
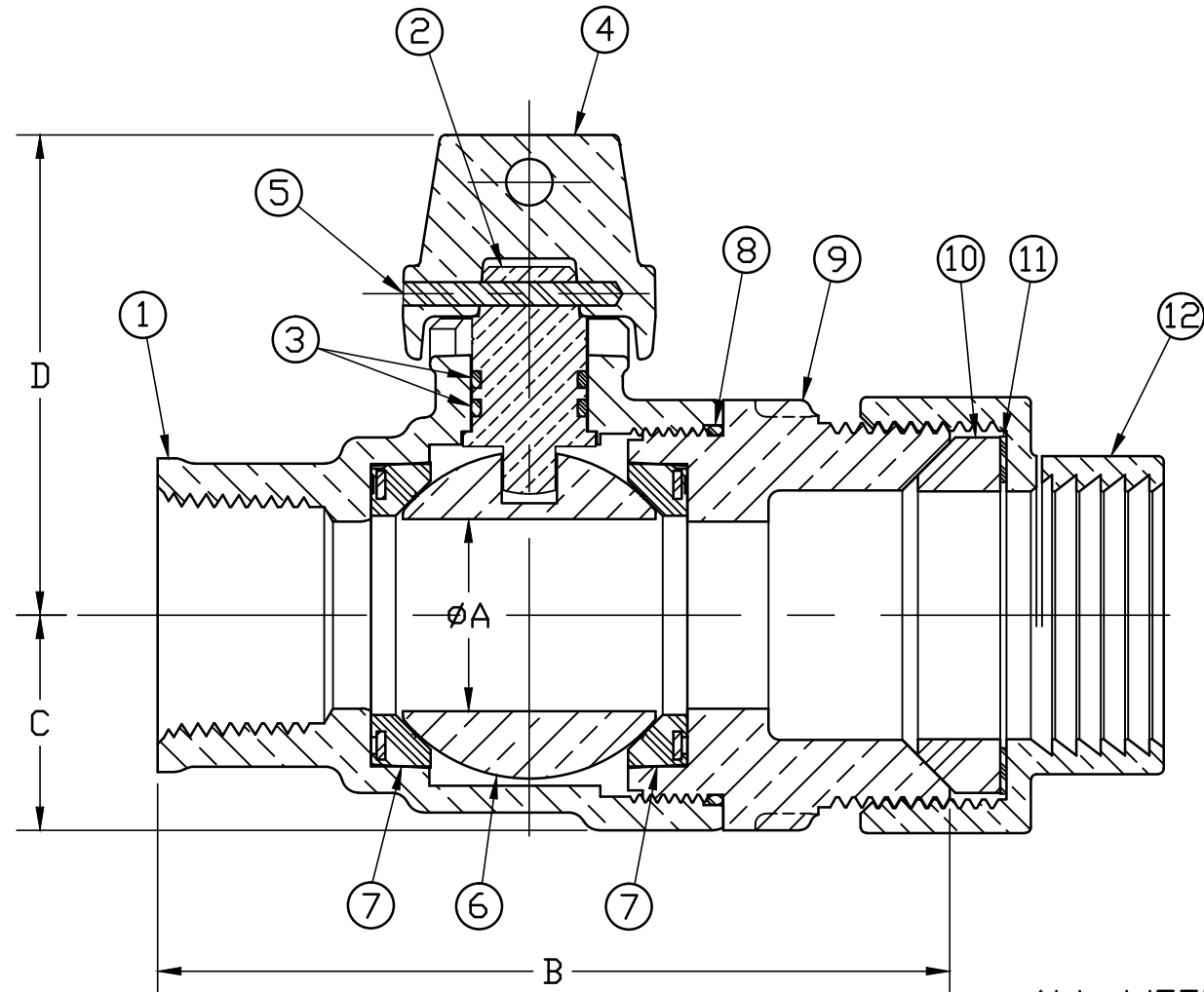


No.	DESCRIPTION	MATERIAL
1	BODY	CAST LOW LEAD BRASS ALLOY
2	STEM	LOW LEAD BRASS ALLOY
3	O-RING	EPDM D2000
4	CAP	CAST BRASS ASTM B62 ALLOY C83600
5	SOLID PIN	AISI 303 STAINLEES STEEL
6	BALL	LOW LEAD BRASS ALLOY
7	GASKET - SEAL	NITRILE D2000
8	O-RING	EPDM D2000
9	END PIECE	CAST LOW LEAD BRASS ALLOY
10	COMP GSKT	BUNA N ASTM D2000
11	WASHER	POLYPROPYLENE
12	CPLG NUT	CAST BRASS ASTM B62 ALLOY C83600



ALL WETTED PARTS ARE LOW LEAD BRASS ALLOY

FILEPATH: PROD-ENG\MUELLER\ASYSUBMITTALS\V25100N

SIZE	ØA	B	C	D	E
1	1.000	4.233	1.150	2.566	3.716
1-1/2	1.500	4.906	1.500	3.372	4.872
2	2.000	5.776	1.820	3.919	5.739

DRFTR	RWB	4/27/16	<b>Mueller Co.</b>	UNLESS OTHERWISE NOTED SURFACE PREPARATION: BREAK CORNER(S) ---- .000 SURFACE FINISH -- XX RMS TOLERANCE(S): LINEAR ----- ± .000 ANGULAR ----- ± 0°00'	THIRD ANGLE PROJECTION	
CHKR					REF. No.	SCALE
ENGR						FULL
MGR			BY	DATE		
STK No:						
MAT'L:						
DESCR.			INLINE LLB BALL CURB VALVE FIP x PJ (IPS PVC)			DWG NUMBER V25100N
REV	ECR	DESCRIPTION	DATE	BY	CHKR	PER EST NO: DXXXX EST FIN WT = 0.00000 lbs

DWG NUMBER  
V25100N  
442-MRKTG

TITLE TO AND OWNERSHIP OF THIS ENGINEERING DATA REMAINS IN Mueller Co. NO USE IS TO BE MADE OF THIS DATA EXCEPT AS SPECIFICALLY AUTHORIZED BY Mueller Co. ASSENT ON THE PART OF THE RECIPIENT TO THESE CONDITIONS IS PRESUMED.