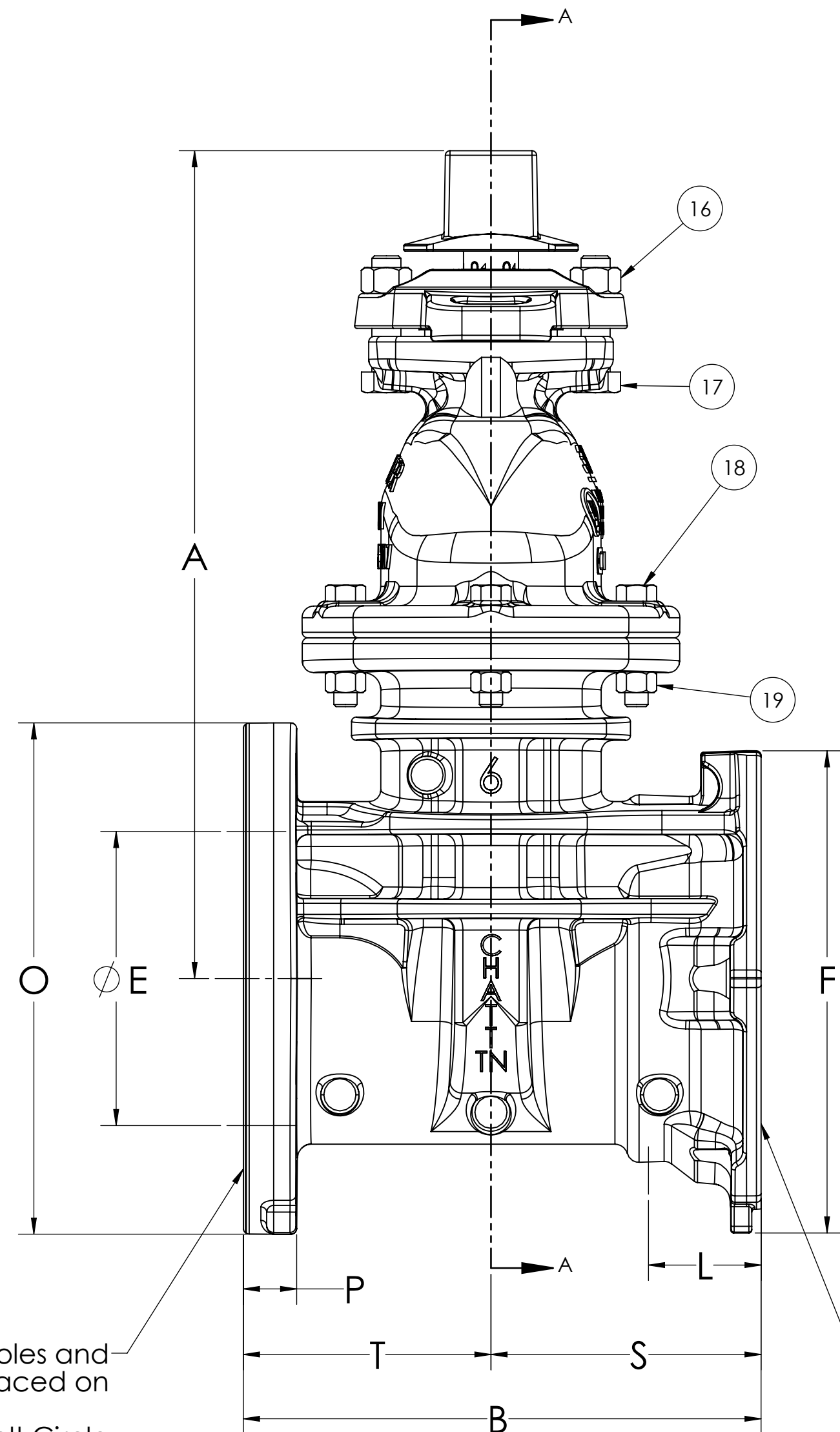


SECTION A-A - TYPICAL

Q - No. and Size of Holes and Slots Equally Spaced on

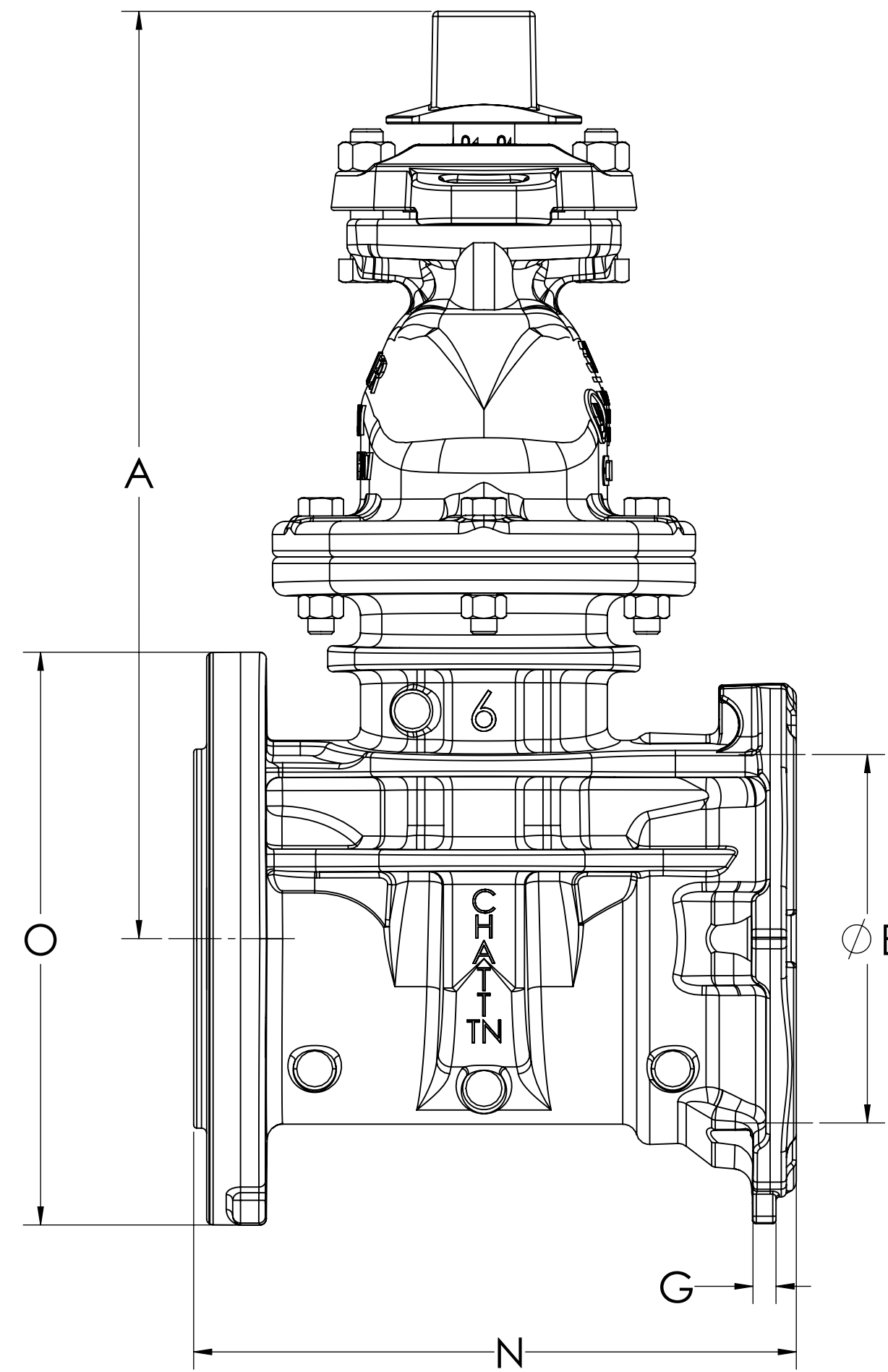
ØR - Bolt Circle FL End



FL x MJ

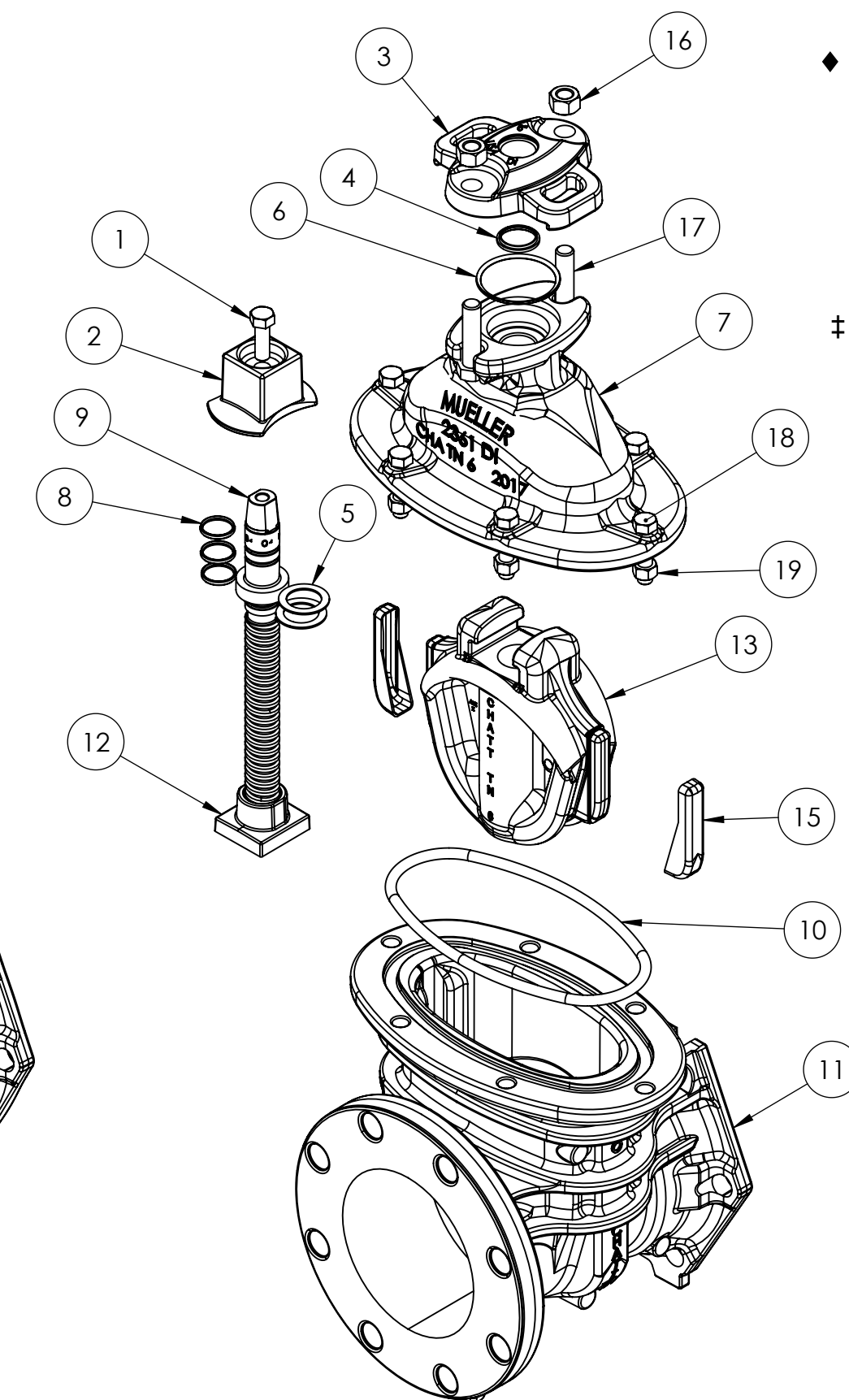
H - No. and Size of Holes and Slots Equally Spaced on

ØJ - Bolt Circle MJ End



TAPPING - FL x MJ

ITEM NO.	DESCRIPTION	B. QTY.	MATERIAL	ASTM	NOTES
1	Cap Screw	1	316 Stainless Steel	F593	Group 2 - CW
2	Wrench Nut	1	Ductile Iron	A536	
3	Stuffing Box	1	Ductile Iron	A536	
4	Wiper Ring (dirt seal)	1	Thermoplastic Polyurethane	D412/ D624 D2240/D792	HY-52D
5	Anti-friction Washer	2	Acetal		
6	Stuffing Box O-Ring	1	Nitrile Rubber		R34
7	Bonnet	1	Ductile Iron	A536	
8	Stem O-ring	3	Nitrile Rubber		R34
9	Stem	1	Bronze	‡	See Note
10	Bonnet O-ring	1	Nitrile Rubber		R34
11	Body FL x MJ Ends	1	Ductile Iron	A536	
12	Stem Nut	1	Bronze	B584	C89833 / NSF 372
13	Encapsulated Disc	1	◆	D2000	See Note
14	Disc Casting	1	Ductile Iron	A536	
15	Guide Cap	2	Acetal		
16	Stuffing box nuts	2	316 Stainless Steel	F594	Group 2 - CW
17	Stuffing box bolts	2	316 Stainless Steel	F593	Group 2 - SH
18	Bonnet bolts	"M"	316 Stainless Steel	F593	Group 2 - SH
19	Bonnet nuts	"M"	316 Stainless Steel	F594	Group 2 - CW
20	Body FL x MJ Ends - Tapping		Ductile Iron	A536	



◆ Rubber Encapsulated Ductile Iron Disc
Ductile Iron - ASTM A536
Rubber Options
1. SBR - ASTM D2000
2. EPDM - ASTM D2000

‡ Bronze Stem Options:
1. Manganese - ASTM B138
• Alloy C67600
2. Everdur - ASTM B98
• Alloy C66100

APPROVED
By Matthew Sliger at 2:51 pm, Nov 02, 2017

ECO# 1864417

Valve Size	A	B	C	ØE (Thru Ø)	F	G	H	ØJ (Bolt Circle Ø)	L	M	Turns to Open	N	O	P	Q	ØR (Bolt Circle Ø)	S	T	Weight FL x MJ	Weight T FL x MJ
4	14.19	9.5	10.79	4.30	8.40	0.50	4-0.88	7.50	2.50	4	14	9.81	9.00	1.00	8-0.75	7.50	5	4.5	80	82
6	18.00	11.06	13.5	6.30	10.41	0.45	6-0.88	9.50	2.50	6	20.5	11.43	11.25	1.13	8-0.88	9.50	5.81	5.25	136	138
8	21.50	12.09	16.36	8.30	12.68	0.50	6-0.88	11.75	2.50	6	26.5	12.46	13.50	1.15	8-0.88	11.75	6.34	5.75	198	200
10	25.50	13.94	20	10.30	15.24	0.62	8-0.88	14.00	2.50	8	33	14.31	16.00	1.29	12-1.00	14.25	7.44	6.5	299	302
12	28.62	14.5	21	12.30	18.024	0.62	8-0.88	16.25	2.50	8	38.5	14.87	19.00	1.33	12-1.00	17.00	7.5	7	398	400

MUELLER CONFIDENTIAL
TITLE TO AND OWNERSHIP OF THIS ENGINEERING DATA REMAINS IN MUELLER CO. NO USE IS TO BE MADE OF THIS DATA EXCEPT AS SPECIFICALLY AUTHORIZED BY MUELLER CO. ASSENT ON THE PART OF THE RECEIPTS TO THESE CONDITIONS IS PRESUMED.

UNLESS OTHERWISE SPECIFIED: DIMENSIONS ARE IN INCHES TOLERANCES:
ANGULAR: ±
TWO DECIMAL: ±
THREE DECIMAL: ±



MATERIAL SEE TABLE
FINISH

DRAWN	JMH	DATE	7/19/2017
CHECKED	AO		
ENG APPR.	MS		
MFG APPR.			
Q.A.			

DESCR.		2361 RWGV 350W w/ 316 Fasteners		
SIZE	DWG. NO.	REV		
D	7425	0		
SCALE:	WEIGHT (lbs): SEE TABLE	SHEET 1 OF 1		

DO NOT SCALE DRAWING