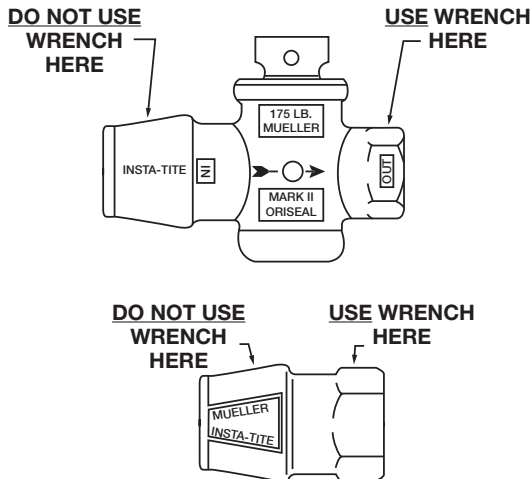


### Installation Instructions

1. Wrenches, pliers, etc. MUST NOT be used on the grip ring end of the Mueller Insta-Tite® Connection. Use wrenches, pliers, etc. only on wrench flats of the valve or fitting.



2. Keep the interior of the connection clean and free of dirt, sand, etc. If the connection does become soiled, wash thoroughly with clean water.
3. Cut pipe square and even (90° perpendicular to run of pipe).

4. Bevel end of pipe. Beveling the pipe allows it to slide into the connection more easily. Use Mueller Pipe Beveling Tool.
5. Center the end of the pipe squarely in the end of the Mueller Insta-Tite® Connection and push straight in, DO NOT ROTATE INSTA-TITE® CONNECTION ON PIPE ONCE CONNECTION IS MADE.

As a check for proper assembly, we suggest marking the pipe to indicate the amount of pipe that should be stabbed into the Mueller Insta-Tite® Connection. The length for each size connection is listed in the chart below.

When the pipe is fully inserted, the mark should align with the front edge of the connection body.

6. After pipe is inserted, pull on the pipe to ensure proper grip.
7. If the connection is to be buried in sandy or “gritty” soil, tape should be wrapped around the connection and down onto the pipe to cover the gap at the mouth of the connection.

Size	Type of Pipe	Depth of Insertion
3/4"	IPS-ASTM D-2239 or NBS PS11-69 (SDR-7) 160 psi (White grip ring)	2"
1"	IPS-ASTM D-2239 or NBS PS11-69 (SDR-7) 160 psi (White grip ring)	2"
3/4"	CTS-ASTM D-2737 160 psi (Red grip ring)	1-3/4"
1 "	CTS-ASTM D-2737 160 psi (Red grip ring)	1-7/8"

### Disassembly of Mueller Insta-Tite® Connections

1. To remove the pipe from a Mueller Insta-Tite® Connection, slip a pipe removal tool into the connection between the pipe and grip ring and pull the pipe from the connection (use two pipe removal tools on 1" size connections).
2. To reuse the Mueller Insta-Tite® Connection after the pipe has been removed, a new grip ring must be used.

### Phone: (800) 423-1323

By deviating from the above listed instructions, you will void any product warranty and release Mueller Co. and its affiliated entities from any and all liability associated with the installation or use of this product. For details on the product's warranty, terms, and conditions, please visit [www.muellercompany.com](http://www.muellercompany.com).