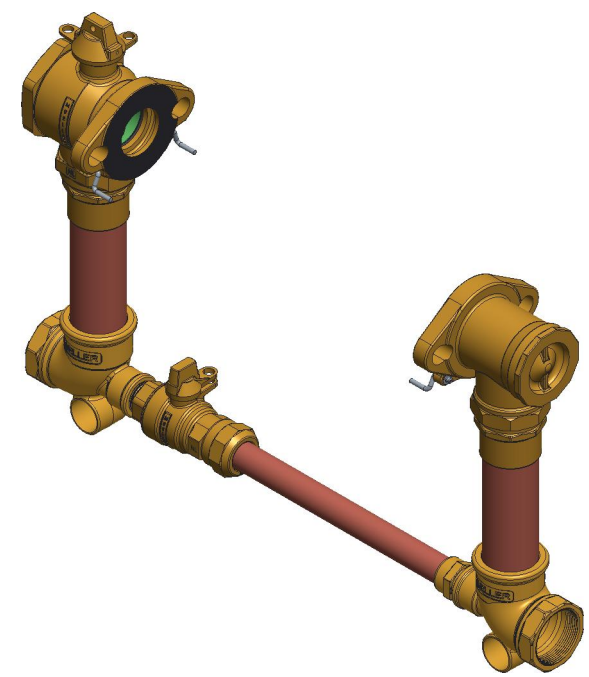
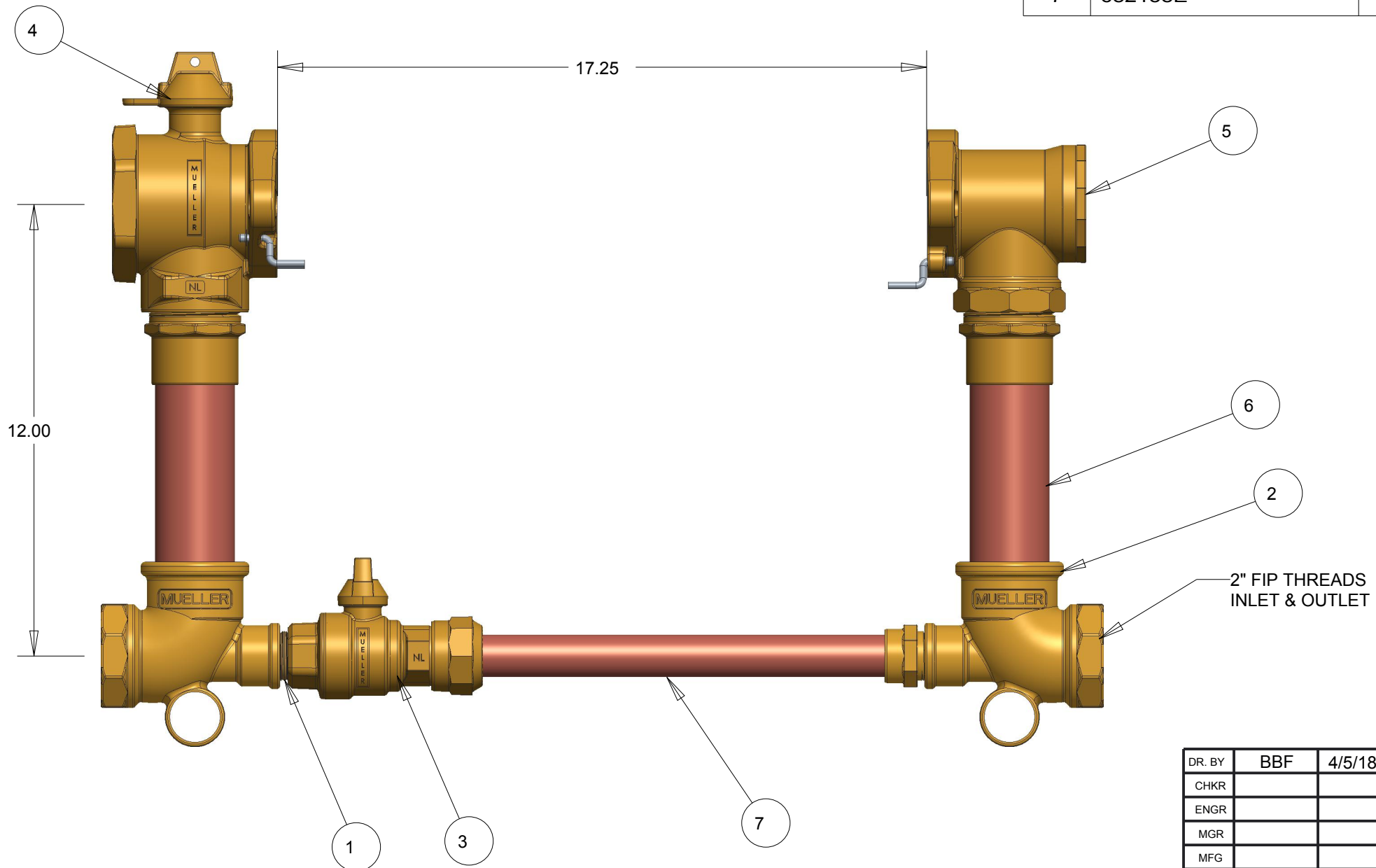


ITEM NO	PART NUMBER	QTY	DESCRIPTION
1	047139	1	1" CLOSED NIPPLE
2	530146	2	TEE (2" FIP X 2" SOLDER X 1" FIP)
3	330B25170N	1	1" INLINE BALL VALVE (110 X FIP)
4	550B2428601N	1	2" FULL PORT BALL VALVE
5	550H14244N	1	2" DUAL CHECK VALVE
6	680378E	2	RISER SUB ASSEMBLY
7	682158E	1	BY PASS SUB ASSEMBLY



**OPTION CODE: 01**  
 \* NO CHECK VALVE ON BY-PASS

DR. BY	BBF	4/5/18	UNLESS OTHERWISE NOTED	THIRD ANGLE PROJECTION	C.B. NO.
CHKR			BREAK CAST CORNER(S)---		
ENGR			BREAK MACH CORNER(S)---	PURCH.	FINISH
MGR			TOLERANCES	REF. NO.	PATT. NO.
MFG			UNLESS OTHERWISE NOTED	SCALE	
TOOL			LINEAR                      ANGULAR	NONE	
FDRY			±                                      ±	STK. NO.	
MAT'L:					
			DESCR. 2" COPPER METER SETTER 12" RISER HEIGHT LOW LEAD BRASS	NUMBER 105B2423--2-01N	

105B2423--2-01N