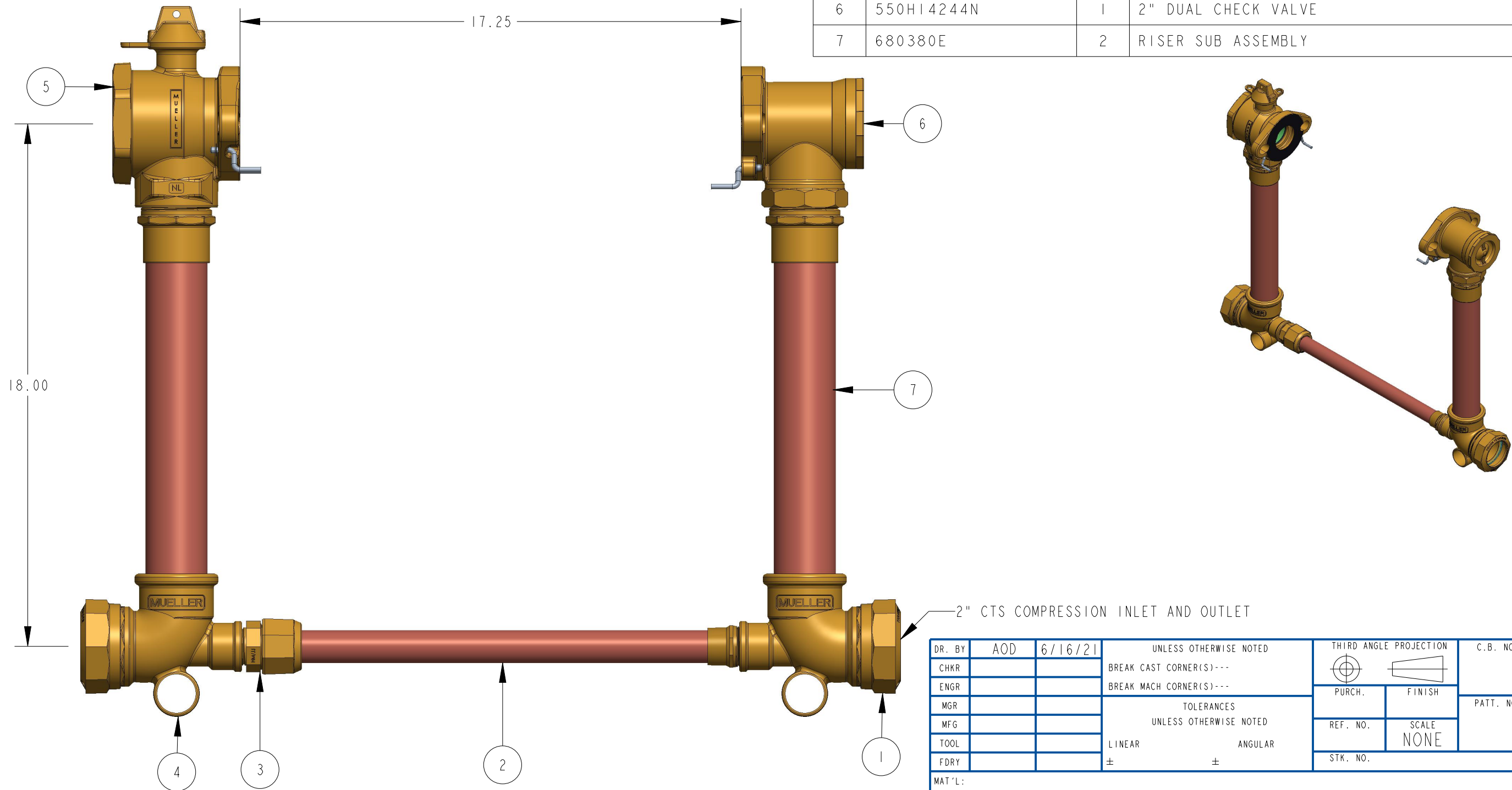


ITEM NO	PART NUMBER	QTY	DESCRIPTION
1	507851	2	2" CTS COMPRESSION
2	681558	1	TIE BAR SUB ASSEMBLY
3	330H15428N	1	1" MIP X 1" CTS COMPRESSION TAILPIECE
4	549756E	2	TEE (2" CTS COMP X 2" SOLDER X 1" FIP)
5	550B2428601N	1	2" FULL PORT BALL VALVE
6	550H14244N	1	2" DUAL CHECK VALVE
7	680380E	2	RISER SUB ASSEMBLY



106B2422--2-02N

DR. BY	AOD	6/16/21	UNLESS OTHERWISE NOTED		THIRD ANGLE PROJECTION	C.B. NO.
CHKR			BREAK CAST CORNER(S)---			
ENGR			BREAK MACH CORNER(S)---		PURCH.	PATT. NO.
MGR			TOLERANCES		FINISH	
MFG			UNLESS OTHERWISE NOTED		REF. NO.	SCALE
TOOL			LINEAR	ANGULAR	STK. NO.	NONE
FDRY			±	±		
MAT'L:						
		DESCR.	2" COPPER METER SETTER 18" RISER HEIGHT LOW LEAD BRASS		NUMBER	106B2422--2-02N