

MUELLER®

Mega-Lite® Drilling Machine

TABLE OF CONTENTS	PAGE
Equipment	2
Operating Instructions	3-4
Parts Information	5
Travel Charts	6-11

⚠ WARNING:

1. Read and follow instructions carefully. Proper training and periodic review regarding the use of this equipment is essential to prevent possible serious injury and/or property damage. The instructions contained herein were developed for using this equipment on fittings manufactured by Mueller Co., and may not be applicable for any other use.
2. Do not exceed the pressure ratings of any components or equipment. Exceeding the rated pressure may result in serious injury and/or property damage.
3. Safety goggles and other appropriate protective gear should be used. Failure to do so could result in serious injury.
4. Pressure test, check for and repair leaks in all fittings and components each time one is installed or any joint or connection is broken. Failure to find and repair a leak from any source in the fittings, by-pass lines or equipment could result in an explosion and subsequent serious injury and/or property damage.
5. Mueller Drilling Machines and Equipment have been carefully designed and engineered to work together as a unit. The use of equipment manufactured by someone other than Mueller Co. may cause excessive wear or a malfunction of the Mueller machines.



Reliable Connections®

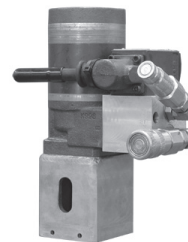
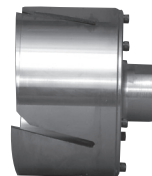
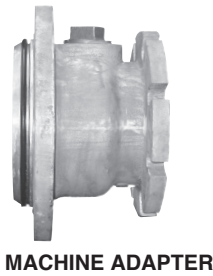
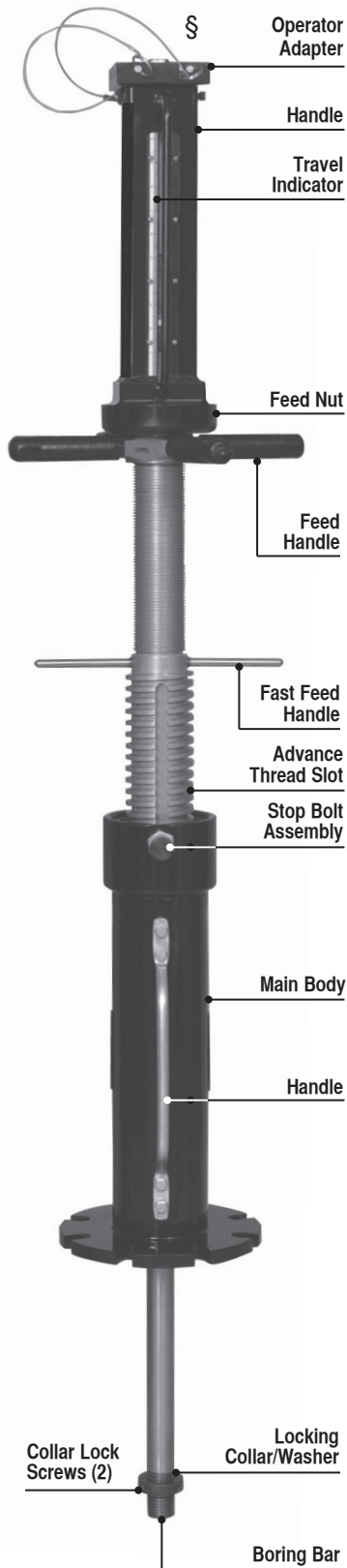
Customer Service Center
Decatur, Illinois
800.798.3131
www.muellercompany.com
moreinfo@muellercompany.com

All warranties, expressed or implied, for Mueller Drilling Machines are rendered null and void if the machines are used with shell cutters or equipment manufactured by someone other than Mueller Co.

Mega-Lite® Drilling Machine

Equipment

OPTIONAL EQUIPMENT



MEGA-LITE SHELL CUTTERS, PILOT DRILLS & DRILL EXTENSIONS

Nominal Shell Cutter Size	3"	4"	6"	8"	10"	12"
Shell Cutter for Plastic Pipe	—	537052	537053	682574	682575	682576
Plastic Pipe Pilot Shell Cutter	—	681919	681919	681919	681919	681919
Pilot Cutter Extension	—	537047	537048	537048	537049	537049
Shell Cutter for Ductile Pipe	537071	537072	537073	537074	537075	537076
Pilot Drill	682573	682573	682573	682573	682573	682573
Pilot Drill Extension	—	—	—	537044	537045	537046

MACHINE SET-UP

1. Attach proper size Tapping Sleeve to pipe to be drilled, using standard procedures.
2. Attach appropriate Tapping Valve to fitting, using standard procedures. Test sleeve and valve assembly.
3. Select correct Shell Cutter and Pilot Drill according to size of Tapping Sleeve, Tapping Valve, and type of pipe. Inspect Shell Cutter and Pilot Drill for cracks, defects and sharpness. If Shell Cutter is dull or has missing or cracked teeth inserts, return to Mueller for rework and sharpening. Dull or damaged Pilot Drill, insert, or plastic pipe Shell Cutter should be replaced.
4. Select the proper Adapter according to size and type of Gate Valve, and bolt it to flange on Main Body of Machine, using Machine Gasket (Part No. 55449). Check to be sure gasket is in good condition and in place.
5. Advance Boring Bar until its end is exposed sufficiently beyond Adapter flange to attach cutting tool. Boring Bar is advanced by disengaging Stop Bolt from Advance Thread Slot, then by turning Fast Feed Handles **clockwise**. If this does not expose enough Boring Bar: engage Stop Bolt in Advance Thread Slot then turn Feed Handles **clockwise**. (Before advancing fast feed handles, be sure Stop Bolt is completely retracted. Failure to do so could cause damage to threads.)
6. Attach Boring Bar Extension if required – see Table 1. Thread Extension completely onto Boring Bar end, then back off 1/4 turn. Tighten Locking Collar and Washer against end of extension and tighten two Lock Screws on collar.

NOTE: This equipment has been tested and verified to provide sufficient travel and clearance when used on Mueller® brand tapping sleeves and valves only.

Table 1.

Shell Cutter	Mech. Joint	AquaGrip®	Flanged
4" P Pipe	—	—	—
6" P Pipe	—	N	N
8" P Pipe	—	—	—
10" P Pipe	X	X	N
12" P Pipe	X	X	X
3" DI Pipe			
4" DI Pipe	—	—	—
6" DI Pipe	—	N	N
8" DI Pipe	—	—	—
10" DI Pipe	X	X	N
12" DI Pipe	X	X	X

Data based on Mueller valves, other manufacturer's valves must be checked upon application.

P Pipe = Plastic Pipe

DI Pipe = Ductile Iron Pipe

X = Boring Bar Extension must be used

N = Boring Bar Extension must not be used

— = Boring Bar Extension usage optional

7. Attach drilling tool(s) onto Boring Bar, or to Extension as appropriate. The end of Boring Bar should be flush with the inside surface of Shell Cutter backing plate (hub) – tighten Locking Collar and Washer against Hub and tighten collar Lock Screws. Tighten Pilot Drill securely into threads inside end of Boring Bar.
8. If cutting metallic, HDPE or PVC pipe, apply Mueller Cutting Grease liberally to teeth of Shell Cutter and to cutting edges of Pilot Drill. Only apply Cutting Grease to outside surface of plastic pipe Shell Cutters. DO NOT use Cutting Grease when working on A/C pipe.

9. Retract Boring Bar to its rearmost position by reversing the procedure used in step 5.

10. To verify that tools will clear the valve gate and allow it to close after the drilling operation is complete, make sure Gate Valve is closed at this time, then attach Machine with Adapter and Adapter Gasket to Gate Valve. Check to be sure Adapter Gasket is in good condition. Cutter must not interfere with operation of Gate Valve.

11. Open Tapping Valve.

12. Advance Boring Bar until Pilot Drill contacts main. To advance, disengage Stop Bolt from Advance Thread Slot, then turn Fast Feed Handles **clockwise**. If Pilot Drill does not contact main before running out of Advance Threads, turn Fast Feed Handles **counterclockwise** until Stop Bolt can be engaged in Advance Thread Slot. Turn Fast Feed Handles **clockwise** until Pilot Drill contacts main.

13. If not already done as part of step 12, engage Stop Bolt in Advance Thread Slot (it may be necessary to turn Fast Feed Handles **counterclockwise** slightly).

14. Retract Pilot Drill slightly off main by turning Feed Handles **counterclockwise** 1/2 turn.

NOTE: Never start cutting tools in a bind as this could cause tool breakage.

15. Check available drilling travel using the Travel Indicator.

Mega-Lite® Drilling Machine

Operating Instructions

16. Compare available travel to what is required for size of pipe and Shell Cutter, referring to charts on pages 6-8. Proceed only if there is sufficient travel available.

17. Be sure that control valve on Power Operator is closed, then attach Power Operator to the back of the machine.

If Using Air Power Operator

- a) Attach lubricator whip hose to Operator.
- b) Attach air supply hose to end of lubricator hose.
- c) Verify lubricator reservoir contains sufficient air tool oil.
- d) Turn on air supply and adjust pressure to 90psig at the Operator.

Air Power Operator Requirements

Free Speed	52 RPM
Required Air Pressure	90 psig
Air Consumption at Maximum Power	36 scfm
Stall Torque	254 fl-lbs
Weight	15 lbs

If Using Hydraulic Power Operator

- a) Attach supply and return lines to hydraulic connectors.
- b) Turn on hydraulic supply and adjust flow rate and pressure according to above specifications. Check for proper rotation direction. Tool should be turning **clockwise** when viewed from the operator end of machine.

Hydraulic Power Operator Requirements

Flow Range	3-5 GPM
Free Speed @ 4 GPM	51 RPM
Maximum Continuous Operating Pressure	850 psig
Maximum Intermittent Pressure	1950 psig
Weight	30 lbs

18. Open Operator control valve, which starts rotation of Boring Bar. Feed cutting tools at a slow steady rate using firm pressure on Feed Handles, turning in **clockwise** direction. Proper feed rate can be determined by feel as Feed Handles are turned. Too fast - pressure on Feed Handles will be heavy with the impression cutting tool is being forced or "pushed." Too slow - pressure on Feed Handles will be slight with little resistance felt. Correct feed rate should remove any slack in Feed Handles without any sounds of straining from the Machine or Power Operator.

19. Complete cut in pipe.

20. When Boring Bar has traveled distance determined in step 15, stop Power Operator by closing feed valve.

NOTE: Operator sound and speed will change and Feed Handles will turn easily once cut is complete. Check to be sure cut is complete by turning Feed Handles to advance Boring Bar slightly. If Boring Bar advances easily, cut is complete.

21. Remove Power Operator from Machine.

22. Retract cutting tools from pipe by using Feed Handles to rotate Feed Nut in **counterclockwise** direction. Disengage Stop Bolt and continue turning Fast Feed Handles **counterclockwise** until Boring Bar is in rear most position.

23. Close Tapping Valve.

24. Remove Machine and Adapter from Tapping Valve.

25. With Machine removed from Tapping Valve, advance Boring Bar until Locking Collar behind Shell Cutter is accessible. To advance, disengage Stop Bolt from Advance Thread Slot, then turn Feed Handles **clockwise**. If additional Boring Bar movement is needed, turn Feed Handles **counterclockwise** until Stop Bolt can be engaged in Advance Thread Slot, and turn Feed Handles **clockwise** until Locking Collar is accessible.

26. Loosen two Lock Screws and back collar away from Shell Cutter.

27. Remove Shell Cutter and remove coupon from inside.

28. Remove Pilot Drill from end of Boring Bar.

29. Remove Adapter.

30. After use, dirt and excess cutting grease should be cleaned from Machine. To prevent rust on Boring Bar, it should be given a light coat of oil while fully extended.

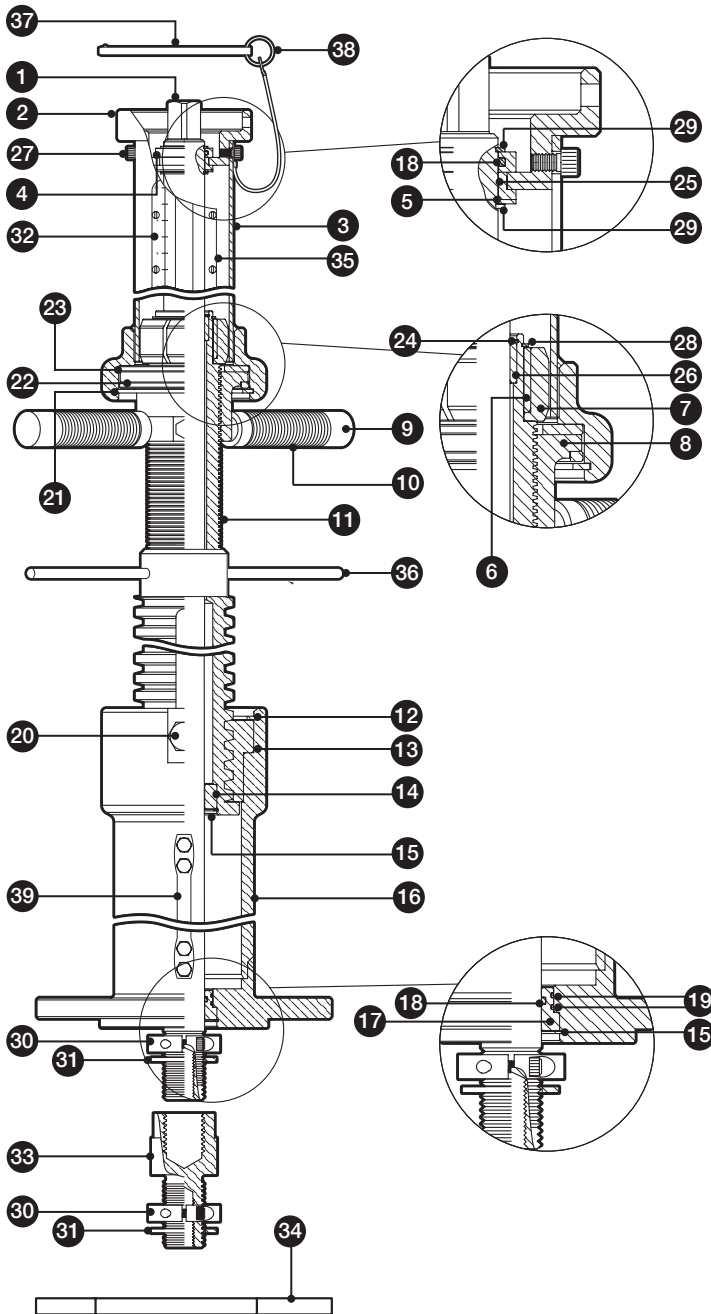
31. Retract Boring Bar until approximately 1/2 remains extended and store Machine in its protective box. (Oiled Boring Bar will pull lubricant into seals and guides as it is retracted.)

32. Dress cutting edges of tools to remove debris, if necessary.

Mega-Lite® Drilling Machine

Parts Information

MEGA-LITE MACHINE PARTS §

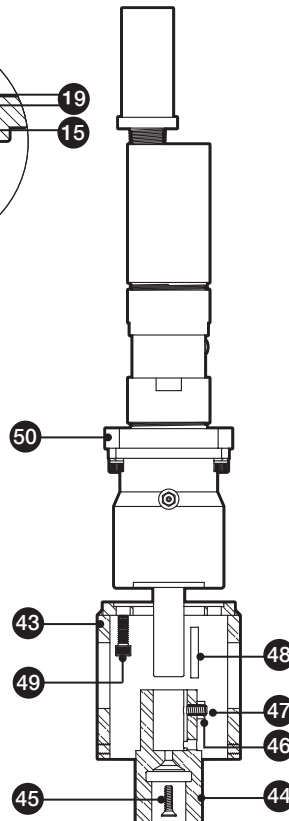


ID	PART #	DESCRIPTION
1	537000	Boring Bar
2	537001	Operator Adapter Plate
3	682570	Square Feed Connector Sub Assy
4	537367	Washer
5	537369	Lower Thrust Washer
6	537006	Inner Square
7	537007	Square Plastic Bearing
8	537092	Feeding Nut
9	537009	Feeding Nut Handle
10	537010	Grip
11	537011	Machine Body
12	537013	Threaded Insert Retaining Ring
13	537093	Threaded Insert
14	537015	Body Bottom Bearing
15	537016	Body Bearing Retaining Ring
16	537018	Flanged Cylinder
17	537020	Pressure Bearing
18	312862	Bearing Washer
19	537022	O-Ring (030)
20	682639	Stop Bolt
21	537024	Feed Nut Retaining Ring
22	537025	Feed Nut Lower Bearing Washer
23	537026	Feed Nut Upper Bearing Washer
24	537027	Body Top Bearing Retaining Ring
25	312692	Bearing
26	537029	Body Top Bearing
27	301123	Hex Socket Head Cap Screw
28	537032	Square Bearing Retaining Ring
29	312689	Retaining Ring
30	537034	Collar
31	537035	Washer
32	537036	Travel Indicator
33	537043	Boring Bar Extension
34	55449	Machine Gasket
35	537084	Plexiglas Cover
36	537083	Fast Feed Handle
37	537085	Lock Pin
38	537086	Lanyard Assembly
39	537087	Body Handle
40	312690	Adapter Plate Bushing
41	537368	Upper Thrust Washer
42	307365	O-Ring

TO ORDER: Specify Quantity, Part Number and Part Name (include catalog number and model number of machine).

Hydraulic Operator Not Shown: Individual repair parts not available. Contact Mueller Customer Service for information.

NOTE: These illustrations are for parts identification only. DO NOT use these illustrations for assembly or disassembly of machine. Mueller Co. offers a machine repair service. Contact Mueller Customer Service Center for details.



AIR OPERATOR PARTS

ID	PART #	DESCRIPTION
43	537037	Operator Adapter
44	537039	Power Operator Coupling
45	537042	Flat Head Socket Screw
46	508317	Hex Nut
47	501303	Set Screw
48	79492	Key
49	92741	Hex Socket Head Cap Screw
50	537067	Air Operator

Mega-Lite® Drilling Machine

Travel Charts

DUCTILE IRON – Dimensions in Inches

PIPE SIZE	CUTTER OD	CLASS						
		50	51	52	53	54	55	56
4"	2.50		2 1/8	2 1/8	2 1/8	2 1/4	2 1/4	2 1/4
	3.50		2 5/8	2 5/8	2 3/4	2 3/4	2 7/8	2 7/8
6"	2.50	2	2	2	2	2 1/8	2 1/8	2 1/8
	3.50	2 1/4	2 1/4	2 1/4	2 1/4	2 3/8	2 3/8	2 3/8
	5.50	3 1/4	3 1/4	3 3/8	3 3/8	3 1/2	3 5/8	3 5/8
8"	2.50	1 7/8	1 7/8	2	2	2	2	2 1/8
	3.50	2 1/8	2 1/8	2 1/8	2 1/8	2 1/4	2 1/4	2 1/4
	5.50	2 3/4	2 3/4	2 3/4	2 7/8	2 7/8	2 7/8	3
	7.50	4 5/8	4 5/8	4 3/4	4 3/4	4 7/8	5	5
10"	2.50	1 7/8	1 7/8	2	2	2	2	2
	3.50	2	2	2 1/8	2 1/8	2 1/8	2 1/8	2 1/4
	5.50	2 1/2	2 1/2	2 5/8	2 5/8	2 5/8	2 5/8	2 3/4
	7.50	3 7/8	4	4	4	4 1/8	4 1/8	4 1/8
12"	9.50	5	5	5 1/8	5 1/4	5 1/4	5 3/8	5 3/8
	2.50	1 7/8	1 7/8	1 7/8	2	2	2	2
	3.50	2	2	2	2 1/8	2 1/8	2 1/8	2 1/8
	5.50	2 3/8	2 3/8	2 1/2	2 1/2	2 1/2	2 1/2	2 5/8
	7.50	3 5/8	3 5/8	3 3/4	3 3/4	3 3/4	3 3/4	3 7/8
14"	9.50	4 1/8	4 1/4	4 1/4	4 1/4	4 3/8	4 3/8	4 1/2
	11.50	5 3/4	5 3/4	5 7/8	6	6	6 1/8	6 1/4
	2.50	1 7/8	1 7/8	1 7/8	2	2	2	2
	3.50	2	2	2	2 1/8	2 1/8	2 1/8	2 1/8
	5.50	2 1/4	2 3/8	2 3/8	2 3/8	2 3/8	2 1/2	2 1/2
	7.50	3 3/8	3 1/2	3 1/2	3 1/2	3 1/2	3 5/8	3 5/8
16"	9.50	3 3/4	3 3/4	3 7/8	3 7/8	3 7/8	4	4
	11.50	4 3/4	4 7/8	4 7/8	5	5	5	5 1/8
	2.50	1 7/8	1 7/8	1 7/8	2	2	2	2
	3.50	2	2	2	2	2 1/8	2 1/8	2 1/8
	5.50	2 1/4	2 1/4	2 1/4	2 3/8	2 3/8	2 3/8	2 3/8
18"	7.50	3 1/4	3 3/8	3 3/8	3 3/8	3 3/8	3 1/2	3 1/2
	9.50	3 1/2	3 1/2	3 5/8	3 5/8	3 5/8	3 3/4	3 3/4
	11.50	4 3/8	4 3/8	4 3/8	4 1/2	4 1/2	4 1/2	4 5/8
	2.50	1 7/8	1 7/8	1 7/8	2	2	2	2
	3.50	2	2	2	2	2 1/8	2 1/8	2 1/8
20"	5.50	2 1/4	2 1/4	2 1/4	2 1/4	2 3/8	2 3/8	2 3/8
	7.50	3 1/4	3 1/4	3 1/4	3 1/4	3 3/8	3 3/8	3 3/8
	9.50	3 3/8	3 3/8	3 3/8	3 3/8	3 1/2	3 1/2	3 1/2
	11.50	4	4	4 1/8	4 1/8	4 1/8	4 1/4	4 1/4
	2.50	1 7/8	1 7/8	1 7/8	2	2	2	2
	3.50	2	2	2	2	2	2 1/8	2 1/8
24"	5.50	2 1/8	2 1/8	2 1/8	2 1/4	2 1/4	2 3/8	2 3/8
	7.50	3	3	3 1/8	3 1/8	3 1/8	3 1/8	3 1/4
	9.50	3	3	3	3 1/8	3 1/8	3 1/8	3 1/4
	11.50	3 1/2	3 1/2	3 1/2	3 1/2	3 5/8	3 5/8	3 5/8
	2.50	1 7/8	1 7/8	2	2	2	2	2
30"	3.50	2	2	2	2	2 1/8	2 1/8	2 1/8
	5.50	2 1/8	2 1/8	2 1/8	2 1/4	2 1/4	2 1/4	2 1/4
	7.50	2 7/8	3	3	3	3 1/8	3 1/8	3 1/8
	9.50	2 7/8	2 7/8	2 7/8	3	3	3	3 1/8
	11.50	3 1/8	3 1/4	3 1/4	3 1/4	3 3/8	3 3/8	3 3/8
	2.50	1 7/8	2	2	2	2 1/8	2 1/8	2 1/4
36"	3.50	2	2	2	2 1/8	2 1/8	2 1/4	2 1/4
	5.50	2 1/8	2 1/8	2 1/8	2 1/4	2 1/4	2 3/8	2 3/8
	7.50	2 7/8	2 7/8	3	3	3 1/8	3 1/8	3 1/8
	9.50	2 3/4	2 3/4	2 7/8	2 7/8	2 7/8	3	3
	11.50	3	3 1/8	3 1/8	3 1/8	3 1/4	3 1/4	3 3/8

Mega-Lite® Drilling Machine

Travel Charts

DUCTILE IRON – Dimensions in Inches

PIPE SIZE	CUTTER OD	CLASS				
		150	200	250	300	350
4"	2.50	2 1/8	2 1/8	2 1/8	2 1/8	2 1/8
	3.50	2 5/8	2 5/8	2 5/8	2 5/8	2 5/8
6"	2.50	2	2	2	2	2
	3.50	2 1/4	2 1/4	2 1/4	2 1/4	2 1/4
	5.50	3 1/4	3 1/4	3 1/4	3 1/4	3 1/4
8"	2.50	1 7/8	1 7/8	1 7/8	1 7/8	1 7/8
	3.50	2	2	2	2	2
	5.50	2 3/4	2 3/4	2 3/4	2 3/4	2 3/4
	7.50	4 1/2	4 1/2	4 1/2	4 1/2	4 1/2
10"	2.50	1 7/8	1 7/8	1 7/8	1 7/8	1 7/8
	3.50	2	2	2	2	2
	5.50	2 1/2	2 1/2	2 1/2	2 1/2	2 1/2
	7.50	3 7/8	3 7/8	3 7/8	3 7/8	3 7/8
	9.50	4 7/8	4 7/8	4 7/8	4 7/8	4 7/8
12"	2.50	1 3/4	1 3/4	1 3/4	1 3/4	1 7/8
	3.50	1 7/8	1 7/8	1 7/8	1 7/8	2
	5.50	2 1/4	2 1/4	2 1/4	2 1/4	2 3/8
	7.50	3 1/2	3 1/2	3 1/2	3 1/2	3 5/8
	9.50	4 1/8	4 1/8	4 1/8	4 1/8	4 1/8
	11.50	5 5/8	5 5/8	5 5/8	5 5/8	5 5/8
14"	2.50	1 3/4	1 3/4	1 7/8	1 7/8	1 7/8
	3.50	1 7/8	1 7/8	1 7/8	2	2
	5.50	2 1/4	2 1/4	2 1/4	2 1/4	2 1/4
	7.50	3 3/8	3 3/8	3 3/8	3 3/8	3 3/8
	9.50	3 5/8	3 5/8	3 3/4	3 3/4	3 3/4
	11.50	4 5/8	4 5/8	4 3/4	4 3/4	4 3/4
16"	2.50	1 3/4	1 3/4	1 7/8	1 7/8	1 7/8
	3.50	1 7/8	1 7/8	1 7/8	2	2
	5.50	2 1/8	2 1/8	2 1/4	2 1/4	2 1/4
	7.50	3 1/4	3 1/4	3 1/4	3 1/4	3 1/4
	9.50	3 3/8	3 3/8	3 1/2	3 1/2	3 1/2
	11.50	4 1/4	4 1/4	4 1/4	4 1/4	4 3/8
18"	2.50	1 3/4	1 3/4	1 7/8	1 7/8	1 7/8
	3.50	1 7/8	1 7/8	1 7/8	2	2
	5.50	2 1/8	2 1/8	2 1/8	2 1/4	2 1/4
	7.50	3 1/8	3 1/8	3 1/8	3 1/8	3 1/4
	9.50	3 1/4	3 1/4	3 1/4	3 1/4	3 3/8
	11.50	3 7/8	3 7/8	4	4	4
20"	2.50	1 3/4	1 3/4	1 7/8	1 7/8	1 7/8
	3.50	1 7/8	1 7/8	1 7/8	2	2
	5.50	2	2	2 1/8	2 1/8	2 1/8
	7.50	3	3	3 1/8	3 1/8	3 1/8
	9.50	3	3	3 1/8	3 1/4	3 1/4
	11.50	3 5/8	3 5/8	3 3/4	3 3/4	3 3/4
24"	2.50	1 3/4	1 7/8	1 7/8	1 7/8	1 7/8
	3.50	1 3/4	1 7/8	1 7/8	2	2
	5.50	2	2 1/8	2 1/8	2 1/8	2 1/8
	7.50	2 7/8	3	3	3	3
	9.50	2 7/8	3	3	3	3
	11.50	3 1/4	3 3/8	3 1/2	3 1/2	3 1/2
30"	2.50	1 7/8	1 7/8	1 7/8	2	2
	3.50	1 7/8	1 7/8	2	2	2
	5.50	2	2	2 1/8	2 1/8	2 1/8
	7.50	2 7/8	2 7/8	3	3	3
	9.50	2 3/4	2 3/4	2 7/8	2 7/8	2 7/8
	11.50	3 1/8	3 1/8	3 1/4	3 1/4	3 1/4
36"	2.50	1 7/8	1 7/8	2	2	2
	3.50	1 7/8	2	2	2	2 1/8
	5.50	2	2	2 1/8	2 1/8	2 1/4
	7.50	2 7/8	2 7/8	2 7/8	3	3
	9.50	2 5/8	2 3/4	2 3/4	2 3/4	2 7/8
	11.50	3	3	3	3 1/8	3 1/8

PVC (CI) – Dimensions in Inches

4 – 12 DR		25		18		14	
14 – 36 DR		41	32.5		25	21	18
PIPE SIZE	CUTTER OD*	CLASS					
		100	125	150	165	200	235
4"	3.38	2 1/8		2 1/4		2 3/8	
6"	3.38	1 7/8		2		2 1/8	
	5.00	2 5/8		2 3/4		3	
8"	3.38	1 7/8		2		2 1/8	
	5.00	2 1/4		2 1/2		2 3/4	
	6.63	3 1/8		3 3/8		3 3/4	
10"	3.38	1 7/8		2		2 1/4	
	5.00	2 1/4		2 1/2		2 5/8	
	6.63	2 3/4		3		3 3/8	
12"	8.38	3 3/4		4 1/8		4 1/2	
	3.38	1 7/8		2 1/8		2 3/8	
	5.00	2 1/4		2 1/2		2 3/4	
	6.63	2 5/8		2 7/8		3 1/4	
14"	8.38	3 3/8		3 5/8		4	
	10.00	4 3/8		4 3/4		5 1/4	
	3.38	1 5/8	1 3/4		2		2 1/4
	5.00	1 7/8	2		2 1/4		2 1/2
16"	6.63	2 1/4	2 3/8		2 5/8		2 7/8
	8.38	2 7/8	3		3 1/8		3 1/2
	10.00	3 1/2	3 5/8		3 7/8		4 1/4
	3.38	1 3/4	1 7/8		2		2 3/8
18"	5.00	1 7/8	2		2 1/4		2 1/2
	6.63	2 1/4	2 3/8		2 5/8		2 7/8
	8.38	2 3/4	2 7/8		3		3 3/8
	10.00	3 1/4	3 3/8		3 5/8		4
20"	3.38	1 3/4	1 7/8		2 1/8	2 1/4	2 3/8
	5.00	2	2 1/8		2 1/4	2 1/2	2 5/8
	6.25	2 1/4	2 3/8		2 5/8	2 3/4	3
	8.38	2 5/8	2 3/4		3	3 1/8	3 3/8
24"	10.00	3 1/8	3 1/4		3 1/2	3 5/8	3 7/8
	3.38	1 3/4	2		2 1/8	2 3/8	2 1/2
	5.00	2	2 1/8		2 3/8	2 1/2	2 3/4
	6.63	2 1/4	2 3/8		2 5/8	2 3/4	3
30"	8.38	2 1/2	2 3/4		3	3 1/8	3 3/8
	10.00	3	3 1/8		3 3/8	3 5/8	3 7/8
	3.38	1 7/8	2 1/8		2 3/8	2 1/2	2 3/4
	5.00	2	2 1/4		2 1/2	2 3/4	3
36"	6.63	2 1/4	2 3/8		2 3/4	2 7/8	3 1/8
	8.38	2 1/2	2 3/4		3	3 1/4	3 1/2
	10.00	2 7/8	3		3 3/8	3 5/8	3 7/8
	3.38	2 1/4	2 1/2		2 7/8	3 1/4	
36"	5.00	2 1/4	2 1/2		3	3 1/4	
	6.63	2 3/8	2 3/4		3 1/8	3 3/8	
	8.38	2 5/8	2 7/8		3 1/4	3 5/8	
	10.00	2 7/8	3 1/8		3 1/2	3 7/8	

*SHELL CUTTER FOR PLASTIC PIPE

PVC (IP) – Dimensions in Inches

PIPE SIZE	CUTTER OD*	CLASS (DR)				
		100 (41)	125 (32.5)	160 (26)	200 (21)	250 (17)
4"	3.38	2	2 1/8	2 1/8	2 1/4	2 3/8
6"	3.38	1 3/4	1 3/4	1 7/8	2	2
	5.00	2 1/2	2 5/8	2 5/8	2 3/4	3
8"	3.38	1 5/8	1 3/4	1 3/4	1 7/8	2
	5.00	2 1/8	2 1/4	2 3/8	2 1/2	2 5/8
	6.63	3	3 1/8	3 1/4	3 3/8	3 5/8
10"	3.38	1 5/8	1 3/4	1 7/8	2	2 1/8
	5.00	2 1/4	2 1/4	2 1/4	2 1/4	2 1/4
	6.63	2 5/8	2 5/8	2 3/4	3	3 1/8
	8.38	3 1/2	3 3/4	3 7/8	4 1/8	4 3/8
12"	3.38	1 5/8	1 3/4	1 7/8	2	2 1/8
	5.00	2	2	2 1/8	2 3/8	2 1/2
	6.63	2 3/8	2 1/2	2 5/8	2 3/4	3
	8.38	3 1/8	3 1/4	3 3/8	3 5/8	3 7/8
	10.00	4 1/8	4 1/4	4 1/2	4 3/4	5
14"	1.61	1 5/8	1 3/4	1 7/8	2	2 1/4
	5.00	2	2	2 1/8	2 3/8	2 1/2
	6.63	2 3/8	2 1/2	2 5/8	2 3/4	3
	8.38	3	3 1/8	3 1/4	3 3/8	3 5/8
	10.00	3 3/4	3 7/8	4 1/8	4 1/4	4 5/8
16"	3.38	1 3/4	1 3/4	2	2 1/8	2 3/8
	5.00	1 7/8	2	2 1/4	2 3/8	2 5/8
	6.63	2 1/4	2 3/8	2 1/2	2 3/4	3
	8.38	2 3/4	2 7/8	3 1/8	3 1/4	3 1/2
	10.00	3 3/8	3 1/2	3 3/4	4	4 1/4
18"	3.38	1 3/4	1 7/8	2	2 1/4	2 3/8
	5.00	2	2	2 1/4	2 3/8	2 5/8
	6.63	2 1/4	2 3/8	2 1/2	2 3/4	3
	8.38	2 5/8	2 3/4	3	3 1/4	3 1/2
	10.00	3 1/4	3 3/8	3 1/2	3 3/4	4
20"	3.38	1 3/4	1 7/8	2 1/8	2 1/4	2 1/2
	5.00	2	2 1/8	2 1/4	2 1/2	2 3/4
	6.63	2 1/4	2 3/8	2 1/2	2 3/4	3
	8.38	2 5/8	2 3/4	3	3 1/8	3 1/2
	10.00	3	3 1/4	3 3/8	3 5/8	4
24"	3.38	1 7/8	2	2 1/4	2 1/2	2 3/4
	5.00	2	2 1/8	2 3/8	2 5/8	3
	6.63	2 1/4	2 3/8	2 5/8	2 7/8	3 1/8
	8.38	2 1/2	2 3/4	2 7/8	3 1/4	3 1/2
	10.00	2 7/8	3 1/8	3 1/4	3 5/8	3 7/8
30"	3.38	2	2 1/4	2 1/2	2 3/4	3 1/8
	5.00	2 1/8	2 3/8	2 5/8	2 7/8	3 1/4
	6.63	2 1/4	2 1/2	2 3/4	3 1/8	3 1/2
	8.38	2 1/2	2 3/4	3	3 3/8	3 3/4
	10.00	2 3/4	3	3 1/4	3 5/8	4
36"	3.38	2 1/8	2 3/8	2 3/4	3 1/8	3 1/2
	5.00	2 1/4	2 1/2	2 3/4	3 1/8	3 5/8
	6.63	2 3/8	2 5/8	3	3 3/8	3 3/4
	8.38	2 5/8	2 7/8	3 1/8	3 1/2	4
	10.00	2 3/4	3	3 3/8	3 3/4	4 1/4

*SHELL CUTTER FOR PLASTIC PIPE

HD PE (IP) – Dimensions in Inches

PIPE SIZE	CUTTER OD*	CLASS (DR)					
		DR21	DR17	DR 15.5	DR13.5	DR11	DR9
4"	3.38	2 1/8	2 1/4	2 1/4	2 3/8	2 5/8	2 7/8
6"	3.38	1 7/8	2	2	2 1/8	2 1/4	2 3/8
	5.00	2 3/4	2 7/8	2 7/8	3	3 3/8	3 3/4
8"	3.38	1 7/8	2	2	2 1/8	2 1/4	2 1/2
	5.00	2 3/8	2 1/2	2 5/8	2 5/8	2 7/8	3 1/8
	6.63	3 1/4	3 1/2	3 5/8	3 3/4	4 1/8	4 7/8
10"	3.38	1 7/8	2	2 1/8	2 1/8	2 3/8	2 5/8
	5.00	2 1/4	2 3/8	2 1/2	2 5/8	2 7/8	3 1/8
	6.63	2 7/8	3	3 1/8	3 1/4	3 1/2	3 7/8
	8.38	4	4 1/4	4 3/8	4 5/8	5 1/8	
12"	3.38	1 7/8	2 1/8	2 1/8	2 1/4	2 1/2	2 3/4
	5.00	2 1/4	2 3/8	2 1/2	2 5/8	2 7/8	3 1/8
	6.63	2 3/4	2 7/8	3	3 1/8	3 3/8	3 3/4
	8.38	3 1/2	3 5/8	3 3/4	4	4 3/8	4 3/4
	10.00	4 1/2	4 7/8	5	5 1/4	6	
14"	3.38	2	2 5/8	2 1/4	2 3/8	2 5/8	3
	5.00	2 1/4	2 3/8	2 1/2	2 5/8	2 7/8	3 1/4
	6.63	2 5/8	2 7/8	3	3 1/8	3 3/8	3 3/4
	8.38	3 1/4	3 1/2	3 5/8	3 3/4	4 1/8	4 5/8
	10.00	4 1/8	4 3/8	4 5/8	4 3/4	5 1/4	5 1/8
16"	3.38	1 1/2	2 1/4	2 1/4	2 1/2	2 3/4	3 1/8
	5.00	2 1/4	2 1/2	2 1/2	2 3/4	3	3 3/8
	6.63	2 5/8	2 7/8	2 7/8	3 1/8	3 3/8	3 7/8
	8.38	3 1/8	3 1/4	3 3/8	3 5/8	4	4 1/2
	10.00	3 5/8	3 7/8	4	4 1/4	4 5/8	5 1/8
18"	3.38	2 1/8	2 1/4	2 3/8	2 5/8	2 7/8	3 1/4
	5.00	2 1/4	2 1/2	2 5/8	2 3/4	3 1/8	3 1/2
	6.63	2 5/8	2 7/8	3	3 1/8	2 1/2	3 7/8
	8.38	3 1/8	3 1/4	3 3/8	3 5/8	4	4 1/2
	10.00	3 5/8	3 7/8	4	4 1/4	4 5/8	5 1/8
20"	3.38	2 1/8	2 3/8	2 1/2	2 3/4	3	3 1/2
	5.00	2 3/8	2 5/8	2 3/4	2 7/8	3 1/4	3 3/4
	6.63	2 5/8	2 7/8	3	3 1/4	3 5/8	4
	8.38	3	3 1/4	3 3/8	3 5/8	4	4 1/2
	10.00	3 1/2	3 3/4	3 7/8	4 1/8	4 5/8	5 1/8
24"	3.38	2 3/8	2 5/8	2 3/4	3	3 3/8	3 7/8
	5.00	2 1/2	2 3/4	2 7/8	3 1/8	3 5/8	4 1/8
	6.63	2 3/4	3	3 1/8	3 3/8	3 7/8	4 3/8
	8.38	3	3 3/8	3 1/2	3 3/4	4 1/8	4 3/4
	10.00	3 3/8	3 3/4	3 7/8	4 1/8	4 5/8	5 1/8
30"	3.38	2 5/8	2 7/8	3 1/8	3 3/8	4	4 1/2
	5.00	2 3/4	3	3 1/4	3 1/2	4	4 5/8
	6.63	2 7/8	3 1/4	3 3/8	3 3/4	4 1/4	4 7/8
	8.38	3 1/8	3 1/2	3 5/8	4	4 1/2	5 1/8
	10.00	3 1/2	3 3/4	4	4 1/4	4 7/8	5 1/2
36"	3.38	2 7/8	3 1/4	3 1/2	3 7/8	4 3/8	5 1/8
	5.00	3	3 3/8	3 5/8	3 7/8	4 1/2	5 1/4
	6.63	3 1/8	3 1/2	3 3/4	4 1/8	4 3/4	5 1/2
	8.38	3 3/8	3 3/4	4	4 1/4	5	5 3/4
	10.00	3 1/2	4	4 1/4	4 5/8	5 1/4	6

*SHELL CUTTER FOR PLASTIC PIPE

HD PE (DI) – Dimensions in Inches

PIPE SIZE	CUTTER OD*	CLASS (DR)					
		DR21	DR17	DR 15.5	DR13.5	DR11	DR9
4"	3.38	2 1/8	2 1/8	2 1/4	2 1/4	2 1/2	2 5/8
6"	3.38	1 7/8	2	2	2 1/8	2 1/4	2 1/2
	5.00	2 5/8	2 3/4	2 7/8	3	3 1/4	3 5/8
8"	3.38	1 7/8	2	2	2 1/8	2 1/4	2 1/2
	5.00	2 3/8	2 1/2	2 1/2	2 5/8	2 7/8	3 1/8
	6.63	3 1/8	3 3/8	3 1/2	3 5/8	3 7/8	4 3/8
10"	3.38	1 7/8	2	2 1/8	2 1/4	2 3/8	2 5/8
	5.00	2 1/4	2 3/8	2 1/2	2 5/8	2 7/8	3 1/8
	6.63	2 7/8	3	3 1/8	3 1/4	3 1/2	3 7/8
	8.38	3 7/8	4 1/8	4 1/4	4 3/8	4 7/8	5 1/2
12"	3.38	1 7/8	2 1/8	2 1/8	2 1/4	2 1/2	2 3/4
	5.00	2 1/4	2 3/8	2 1/2	2 5/8	2 7/8	3 1/8
	6.63	2 3/4	2 7/8	3	3 1/8	3 3/8	3 3/4
	8.38	3 3/8	3 5/8	3 3/4	3 7/8	4 1/4	4 3/4
	10.00	4 3/8	4 5/8	4 7/8	5 1/8	5 5/8	6 1/2
14"	3.38	2	2 1/8	2 1/4	2 3/8	2 5/8	3
	5.00	2 1/4	2 1/2	2 1/2	2 3/4	3	3 1/4
	6.63	2 5/8	2 7/8	2 7/8	3 1/8	3 3/8	3 3/4
	8.38	3 1/4	3 3/8	3 1/2	3 3/4	4	4 1/2
	10.00	3 7/8	4 1/8	4 1/4	4 1/2	5	5 1/2
16"	3.38	2 1/8	2 1/4	3	2 1/2	2 7/8	3 1/4
	5.00	2 1/4	2 1/2	2 5/8	2 3/4	3 1/8	3 1/2
	6.63	2 5/8	2 7/8	3	3 1/8	3 1/2	3 7/8
	8.38	3 1/8	3 3/8	3 1/2	3 5/8	4	4 1/2
	10.00	3 5/8	4	4 1/8	4 1/4	4 3/4	5 1/4
18"	3.38	2 1/8	2 3/8	2 1/2	2 5/8	3	3 3/8
	5.00	2 3/8	2 5/8	2 3/4	2 7/8	3 1/4	3 5/8
	6.25	2 5/8	2 7/8	3	3 1/4	3 1/2	4
	8.38	3	3 1/4	3 3/8	3 5/8	4	4 1/2
	10.00	3 1/2	3 3/4	4	4 1/8	4 5/8	5 1/8
20"	3.38	2 1/4	2 1/2	2 5/8	2 7/8	3 1/4	3 5/8
	5.00	2 3/8	2 5/8	2 3/4	3	3 3/8	3 7/8
	6.63	2 5/8	2 7/8	3	3 1/4	3 5/8	4 1/8
	8.38	3	3 1/4	3 1/2	3 5/8	4 1/8	4 5/8
	10.00	3 1/2	3 3/4	3 7/8	4 1/8	4 5/8	5 1/8
24"	3.38	2 3/8	2 3/4	2 7/8	3 1/8	3 1/2	4 1/8
	5.00	2 1/2	2 7/8	3	3 1/4	3 3/4	4 1/4
	6.63	2 3/4	3 1/8	3 1/4	3 1/2	4	4 1/2
	8.38	3	3 3/8	3 1/2	3 3/4	4 1/4	4 7/8
	10.00	3 3/8	3 3/4	3 7/8	4 1/8	4 5/8	5 1/4
30"	3.38	2 5/8	3	3 1/4	3 1/2	4 1/8	4 3/4
	5.00	2 3/4	3 1/8	3 3/8	3 5/8	4 1/4	4 7/8
	6.63	3	3 3/8	3 1/2	3 7/8	4 3/8	5
	8.38	3 1/4	3 5/8	3 3/4	4 1/8	4 5/8	5 3/8
	10.00	3 1/2	3 7/8	4	4 3/8	5	5 5/8
36"	3.38	3	3 3/8	3 5/8	4	4 5/8	5 3/8
	5.00	3 1/8	3 1/2	3 3/4	4 1/8	4 3/4	5 1/2
	6.63	3 1/4	3 5/8	3 7/8	4 1/4	4 7/8	5 3/4
	8.38	3 3/8	3 7/8	4 1/8	4 1/2	5 1/8	5 7/8
	10.00	3 5/8	4 1/8	4 1/4	4 5/8	5 3/8	6 1/8

*SHELL CUTTER FOR PLASTIC PIPE



Reliable Connections[®]

Water (U.S.)

1.800.423.1323

www.muellercompany.com

moreinfo@muellercompany.com

International

1.423.490.9555

www.mueller-international.com

international@muellercompany.com

Copyright © 2017 Mueller Co., LLC. All Rights Reserved.

The trademarks, logos and service marks displayed in this document herein are the property of Mueller Co., LLC, its affiliates or other third parties.

Products marked with a section symbol (§) are subject to patents or patent applications. For details, visit www.mwppat.com. These products are intended for use in potable water applications. Please contact your Mueller Sales or Customer Service Representative concerning any other application(s).

Form 12360 - Rev 01/17