

MUELLER®

Adjusta-Coil™ Meter Box

Built-in Grade adjustment • Meter access • Prevents freezing

The Adjusta-Coil meter box is our proven Thermal-Coil® design – with a “new twist.” The box can be adjusted to compensate for grade changes without adding separate extensions. Simply set this box in place and twist the top section, set the new grade level, then twist again to permanently and securely set the meter box height.

Depth ranges available

- 48” thru 120” bury depth (12” total adjustment range in 1” increments)
- 36” thru 48” bury depth (6” total adjustment range in 1” increments)
- Other ranges available

The Adjusta-Coil design has all the features of our Thermal-Coil® box

- Rigid .30” min. PVC shell that resists ovaling and adds to the insulating feature to resist frost bridging – it’s white inside for better interior visibility.
- Raise meter to ground level for easy access.
- New and improved platform
 - Stronger, yet lighter
 - Convenient handgrips
 - Platform locks in place when at ground level
- 15” diameter for single or tandem meters, 18” for larger or double meters.
- Rugged, yet light weight for easy field handling.
- Stainless Steel hardware.
- Shipped fully assembled and tested.
- Plus all the lid, bottom, inlet/outlet, and insulating pad options of the Thermal-Coil box.



Platform in raised position

Shown in extended position.



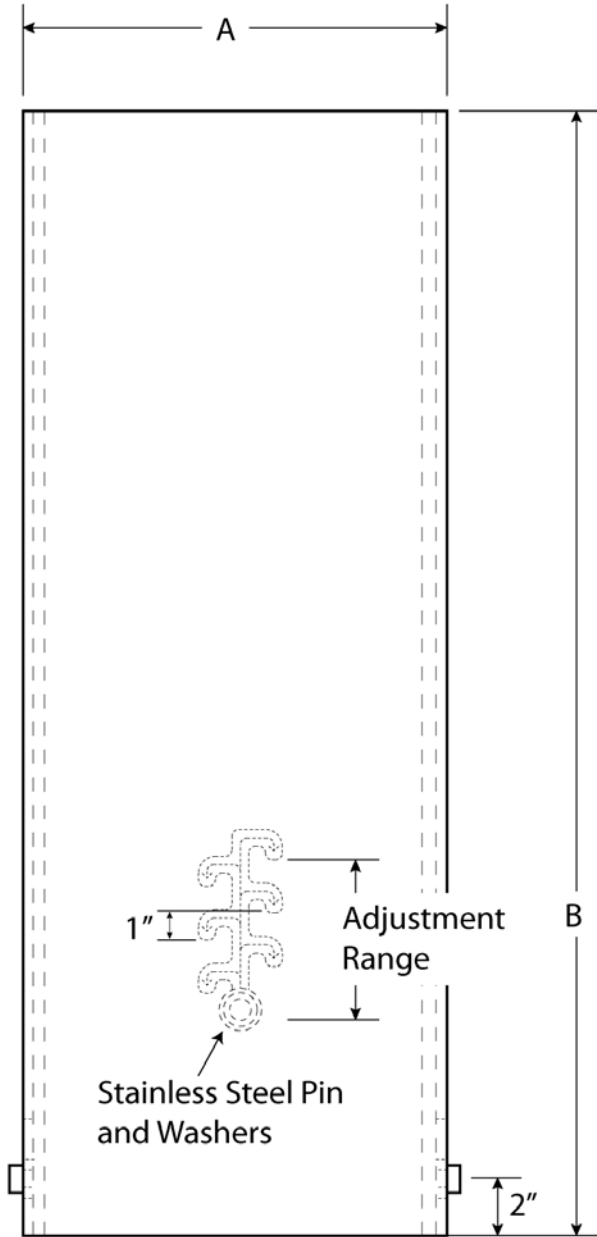
Mueller Co.
633 Chestnut St., Suite 1200
Chattanooga, TN 37450
www.muellercompany.com
moreinfo@muellercompany.com

Toll Free: 1.800.423.1323
Canada: 1.705.719.9965
International: 1.423.490.9555

Copyright © 2016 Mueller Co., LLC. All Rights Reserved.

The trademarks, logos and service marks displayed in this document herein are the property of Mueller Co., LLC, its affiliates or other third parties. Products above marked with a section symbol (§) are subject to patents or patent applications. For details, visit www.mwppat.com. These products are intended for use in potable water applications. Please contact your Mueller Sales or Customer Service Representative concerning any other application(s).

Form 12716 - Rev 3/16



A - Diameter
15"
18"

B - Bury Depth	Range
36"-42"	6"
42"-48"	
48"-60"	12"
54"-66"	
60"-72"	
66"-78"	
72"-84"	
78"-90"	
84"-96"	
90"-102"	
96"-108"	
102"-114"	
108"-120"	



Customer Service – Decatur, IL
 Water Division : 800-423-1323
www.muellercompany.com
 Canada – Mueller Canada Inc., Barrie, Ontario 705-719-9965