

# MUELLER

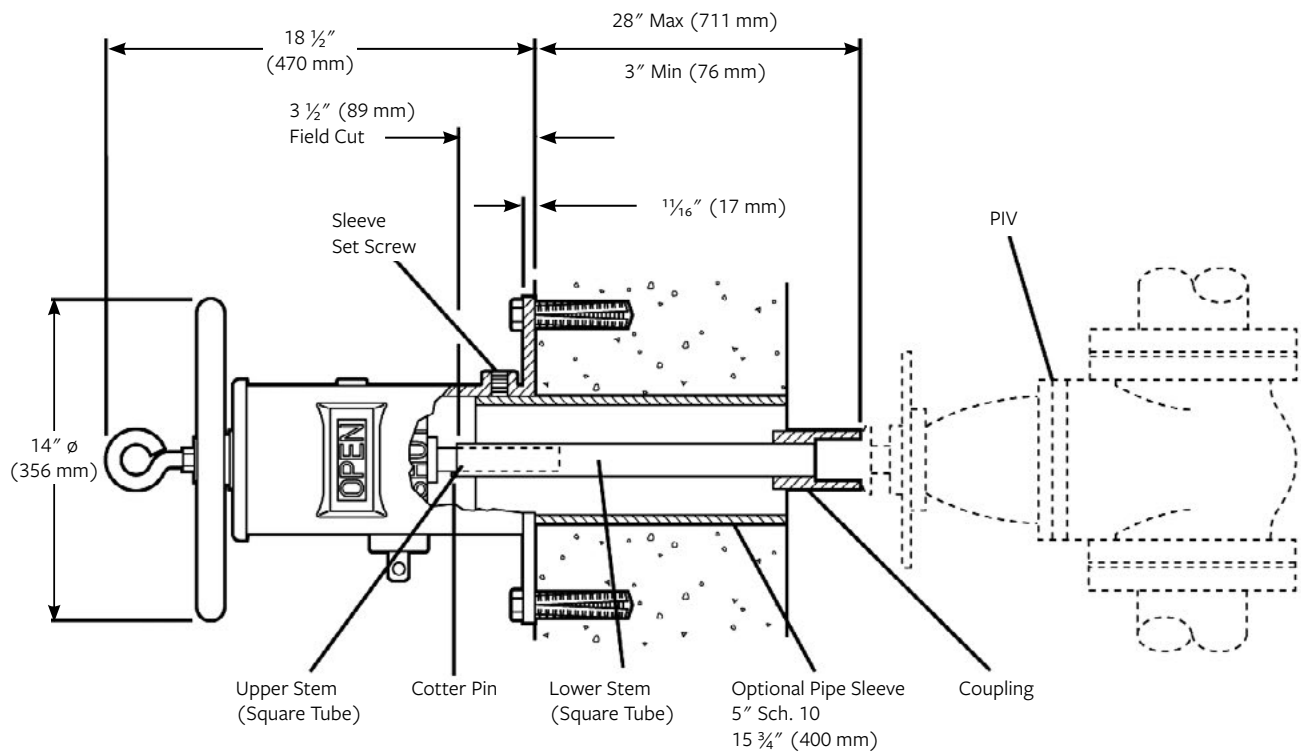
## WALL TYPE INDICATOR POST

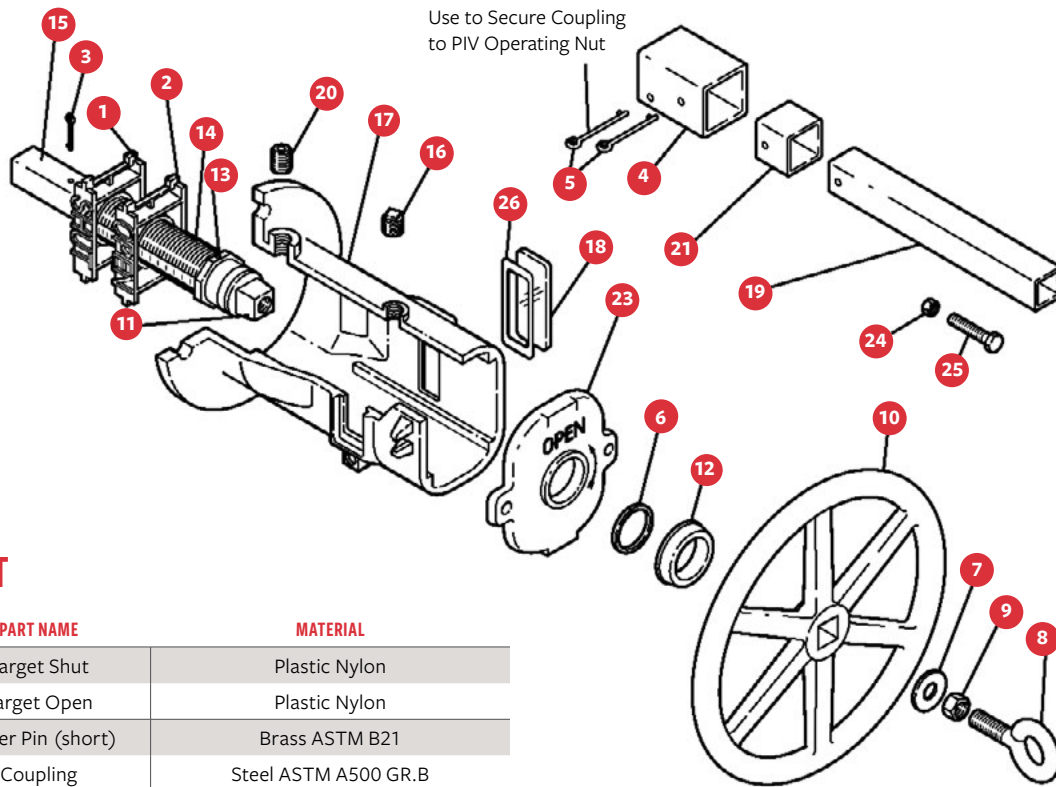
### PRODUCT FEATURES

- Compatible with 4" – 14"/DN100 – DN350 non-rising stem Post Indicator Valves, requiring 14 to 49 turns respectively to open.
- Open left or right options.
- Model A-20814.
- Withstands up to 900 ft-lb (1220 Nm) of operating torque.
- Handwheel operated, includes eye bolt attachment to facilitate use of chain and padlock.
- ½" NPT tapped boss for mounting optional supervisory switch.
- UL listed and FM approved.



### DIMENSIONS



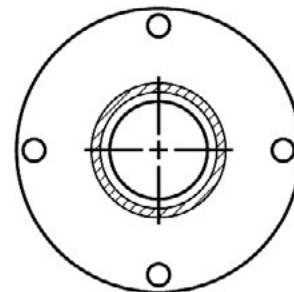


## PARTS LIST

| ID | PART NAME              | MATERIAL                         |
|----|------------------------|----------------------------------|
| 1  | Target Shut            | Plastic Nylon                    |
| 2  | Target Open            | Plastic Nylon                    |
| 3  | Cotter Pin (short)     | Brass ASTM B21                   |
| 4  | Coupling               | Steel ASTM A500 GR.B             |
| 5  | Cotter Pin (long)      | Brass ASTM B21                   |
| 6  | Retaining Ring         | Stainless Steel AISI 302         |
| 7  | Washer                 | Steel/Zinc Plated                |
| 8  | Eye Bolt               | Steel/Zinc Plated                |
| 9  | Hex Nut                | Steel/Zinc Plated ASTM A563 GR.A |
| 10 | Handwheel              | Ductile Iron ASTM A536           |
| 11 | Operating Nut          | Ductile Iron ASTM A536           |
| 12 | Cap                    | Polypropylene                    |
| 13 | Spring Pin             | Stainless Steel AISI 420         |
| 14 | Threaded Sleeve        | Nylon                            |
| 15 | Upper Stem             | Steel ASTM A513                  |
| 16 | Pipe Plug - Hex Socket | Steel                            |
| 17 | Post Head              | Cast Iron ASTM A126 CL.B         |
| 18 | Window                 | Plexiglass                       |
| 19 | Lower Stem             | Steel ASTM A500 GR.B             |
| 20 | Socket Head Set Screw  | Steel ANSI B18.3                 |
| 21 | Coupling Insert        | Steel ASTM A500 GR.B             |
| 23 | Indicator Post Cover   | Cast Iron ASTM A126 CL.B         |
| 24 | Hex Nut 1/2"           | Steel/Zinc Plated ASTM A563 GR.B |
| 25 | Hex Bolt 1/2" x 1 3/4" | Steel/Zinc Plated ANSI B18.2.1   |
| 26 | Window Gasket          | Rubber                           |

**WEIGHT: 59 LBS (27 KG)**

12"  $\phi$  (305 mm) Flange



3/4"  $\phi$  (19 mm) Bolt Holes on  
10 1/2"  $\phi$  (267 mm) Bolt Circle

**For more information about us or to view our full line of products, please visit [www.mueller-international.com](http://www.mueller-international.com) or call International Customer Service at:**

**UK: +44.1438.487410 Dubai: +971.4.214.6640 Singapore: +65.6816.3088 USA: +1.800.423.1323 | [international@muellerwp.com](mailto:international@muellerwp.com)**

Mueller refers to one or more of Mueller Water Products, Inc. a Delaware corporation ("MWP"), and its subsidiaries. MWP and each of its subsidiaries are legally separate and independent entities when providing products and services. MWP does not provide products or services to third parties. MWP and each of its subsidiaries are liable only for their own acts and omissions and not those of each other. MWP brands include Mueller®, Echologics®, Hydro Gate®, Hydro-Guard®, Jones®, Krausz®, MiNet®, Milliken®, Pratt®, Pratt Industrial®, Singer®, and U.S. Pipe Valve & Hydrant. Please see [muellerwp.com/brands](http://muellerwp.com/brands) to learn more.

© 2020 Mueller Water Products, Inc. All Rights Reserved. The trademarks, logos and service marks displayed in this document are the property of Mueller Water Products, Inc., its affiliates or other third parties. Products above marked with a section symbol (§) are subject to patents or patent applications. For details visit [www.muellerwp.com](http://www.muellerwp.com).

F 12809 3/20

**MUELLER**