

MUELLER

WATER DISTRIBUTION PRODUCTS

Full-Line Product Offering





OUR MISSION

“To be a trusted provider of branded products and services known for superior quality, reliability and the lowest total cost of ownership that help our customers operate their businesses more efficiently and protect lives and property.

We manage our business to realize leadership, sales, and value creation over the long term.”

- Greg Rogowski
President, Mueller

TABLE OF CONTENTS

- Hydrants and Hydrant Security.....2
- Main Valves.....3
- Pipe Repair Products.....4
- Service Brass.....5
- Machines and Tools.....7
- Hydro-Guard®.....8
- Company History9
- Delivery and Service 11

COMPANY OVERVIEW

We are North America’s largest and only full-line supplier of potable Water Distribution Products. Our products are used throughout the water system from source to customer.

We catalog thousands of items to suit the needs of virtually any water system application, and for use with any water main or service line pipe material. Mueller® Water Distribution Products are available through Authorized Mueller Stocking Distributors in all parts of the United States, and are sold around the world through qualified distributors and representatives.

Note that the Jones design uses an O-ring seal and does not depend upon threaded plastic components, which are notoriously weak and difficult to seal against leakage.

CORE VALUES

Mueller has a set of Core Values to help us think, act and work together to benefit all of our stakeholders – from our employees who are our most valued assets, to our customers who expect quality products and service.

These Core Values are not an end in themselves. Rather, they form the foundation of our culture, define behaviors required of us all and guide our decision making.

As a company and as individuals, we will:

- Act with integrity – do the right thing
- Treat each other with respect
- Build relationships
- Promote a culture of innovation and continuous improvement
- Deliver exceptional results
- Foster a safe and environmentally responsible culture

HYDRANTS & HYDRANT SECURITY

Dry Barrel Fire Hydrants from Mueller are the most often installed brand in North America. Brands include: Super Centurion® 250 and 350 fire hydrants (to 350 psig/2400 kPa/24 barg working pressure); Super Centurion Monitor fire hydrants (250 psig/1725 kPa/17 barg); Modern Centurion fire hydrants (200 psig/1375 kPa/13 barg), and spin-in, flush

and post type hydrants. Mueller fire hydrants are known throughout the waterworks industry for superior flow characteristics, dependability, ease of repair, and aftermarket support. They feature a unique stainless steel safety stem coupling that breaks cleanly during traffic impact to minimize hydrant damage and allow quick and cost-effective repair.



SUPER CENTURION 250™



MODERN CENTURION



SUPER CENTURION 200™
SPIN-IN



FLUSH-TYPE HYDRANT



MONITOR HYDRANT



POST-TYPE HYDRANT



SUPER CENTURION
250/HS™



HYDRANT-DEFENDER®

MAIN VALVES

GATE VALVES

Resilient Wedge Gate Valves from Mueller feature a forged bronze stem (through 12") and thrust collar for superior strength, an elastomer-encapsulated ductile iron wedge and engineered plastic guides to stabilize the wedge and prevent binding. Sizes: 2" to 54" with working pressures to 350 psig (2400 kPa/24 barg). Connection options include: mechanical joint (MJ), flanged (FL), slip-on (SL), radial compression (RAD), and threaded (THD). Double disc gate valves are also available.



350 PSI DUCTILE IRON RESILIENT WEDGE GATE VALVE
(AVAILABLE 4" - 12")



175 - 250 PSI DUCTILE IRON RESILIENT WEDGE GATE VALVE
(AVAILABLE 14" - 54")

BUTTERFLY & CHECK VALVES

Mueller supplies top-performing butterfly valves and a variety of check valves. Lineseal® butterfly valves are available in either ductile iron or cast iron. Butterfly valves open with less torque required, lowering the cost of actuation. Sizes: 3" to 48" with working pressures to 250 psig (1725 kPa/17 barg). Connection options include flanged, slip-on, and MJ. Mueller offers a variety of check valves including, gravity swing, weight and spring-assisted lever, and a flexible disc style. All check valves feature internal parts that are easily accessible through valve top, so the valve does not have to be removed from the line for maintenance. Sizes: 2" to 36" and working pressures to 250 psig (1725 kPa/17 barg).



BUTTERFLY VALVE



CHECK VALVE



FLEX CHECK VALVE

PIPE REPAIR PRODUCTS

Pipe Repair products from Mueller are the right choice for emergency repair of water main or service line breaks and leaks. For making line connections, Mueller offers service saddles in bronze, ductile iron, and stainless steel. All saddles form a tight connection between the main and service line and feature an O-ring fit into a dimensionally controlled groove, which eliminates creep and seal blowout. Different designs are available for use on any type of pipe material or size of main.

Mueller all-stainless steel style pipe repair clamps are an ideal solution for emergency repair of water main or service line breaks and leaks. Mueller offers finger-lug, it's unique ultra-low profile design for tight spaces, or ductile iron finger lug styles. Sizes: ½" to 36" diameter and larger (by special order).

Tapping products include tapping sleeves and crosses in ductile and cast iron, as well as sleeves in stainless steel. Most tapping sleeves and crosses cover a pipe size range of 24" and valves to 48".



DUCTILE IRON SERVICE SADDLES



BRONZE SERVICE SADDLES



STAINLESS STEEL REPAIR CLAMPS



BRONZE SERVICE SADDLES



MINI-BAND™ PIPE-SAVER® CLAMPS



STAINLESS STEEL TAPPING SLEEVES

SERVICE BRASS

CORPORATION VALVES

Corporation valves from Mueller are available for virtually any service line installation. Products feature durable, low-lead brass construction and a wide variety of outlet connection choices. Valve types include ball, plug, and ground key styles. Sizes: 1/2" to 2" with working pressures to 300 psig (2075 kPa/20 barg).



CORPORATION VALVE

CURB VALVES AND BOXES

Curb valves & boxes from Mueller feature an extensive line of products and a full range of box accessories, including shut-off rods, augers and keys. Curb valve styles include Mueller 300™ ball valves, Oriseal® plug and ground key types.



BALL CURB VALVE



CURB BOX

PIPE FITTINGS

Service fittings from Mueller are duty-proven and available in styles to fit today's popular types of water service pipe and tubing. Products feature durable main body brass construction, assuring pressure-tight connections. Types include Mueller 110® and other compression connections, Insta-Tite® stab-in, copper flare, threaded and other specialty connections. There's a style for virtually any application.



MUELLER GRIP COMPRESSION CONNECTION



MUELLER 110 COMPRESSION CONNECTION



MUELLER 110 COMPRESSION CONNECTION



INSTA-TITE CONNECTION

SERVICE BRASS

METER VALVES & SETTERS

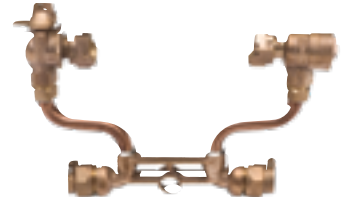
Meter setting materials from Mueller include both copper and cast iron yokes in hundreds of configurations sure to fit any application. Styles include: adjustable yokes, meter relocators, various straight and angle meter valves, and ball valve, Oriseal plug and ground key designs, in-line, angle and top entry dual check valves, cast iron meter boxes, meter couplings, pit and manhole covers, keys, locks, meter bushings and idlers.



MUELLER 300 BALL
ANGLE METER VALVE



ANGLE METER
CHECK VALVE



METER YOKE

METER BOXES

PVC meter boxes & vaults from Mueller offer strength and light-weight construction, for shipping and handling convenience. They come fully assembled and factory tested. Many styles are available for single and tandem installations, as well as protection against extreme cold weather. Choice of iron or composite plastic lids, which allow radio AMR monitoring and are virtually transparent to R.F. signals. Bury depths: 10" to 120". Meter box sizes: 15" to 36" diameters.



ADJUSTACOIL™ PVC METER BOX

SERVICE SADDLES

Service saddles from Mueller are available in bronze and ductile iron and are used for making service line connections. Different designs are available for use on any type of pipe material or size of main. All saddles form a tight connection between the main and service line and feature an O-ring fit into a dimensionally-controlled groove, which eliminates creep and seal blowout, or need for a gridded mat type gasket.



DUCTILE IRON SERVICE
SADDLES



BRONZE SERVICE SADDLES

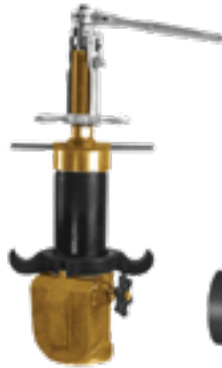
MACHINES AND TOOLS

Mueller manufactures both small and large varieties of drilling machines for use on dry or pressurized pipe of all types. Small drilling machines can bore holes $\frac{7}{16}$ " to 2" and are available in hand and power operated models, with drills and shell cutters matched to pipe type. Large drilling machines with hole ranges from 1½" to 18½" accommodate valves from 2" to 24".

Drilling & tapping machines from Mueller are used to tap water service lines with virtually any type and size of pipe. Products feature rugged design, with proven precision and dependability for superior everyday performance. Both dry install and under pressure application models are offered. Machines range: ½" to 2" corporation valve insertion.



B-101™ DRILLING AND TAPPING MACHINE



A-3™ DRILLING AND TAPPING MACHINE



“J”™ DRILLING AND TAPPING MACHINE



D-5™ DRILLING MACHINE



E-5™ DRILLING MACHINE



MEGA-CUT™ DRILLING MACHINE



TRU-CUT™ DRILLING MACHINE



PL-2™ DRILLING MACHINE



MEGA-LITE® DRILLING MACHINE



CL-12™ DRILLING MACHINE



C1-36-99002™ DRILLING MACHINE

HYDRO-GUARD

HYDRO-GUARD AUTOMATED FLUSHING SYSTEMS

The Hydro-Guard product line revolutionized the Water Distribution industry in 1998 with the introduction of automatic, programmable flushing systems. Designed to allow public and private Water distribution Utilities to maintain more consistency in the level of chlorine residual in water distribution lines, especially at the dead-end, the Hydro-Guard automatic flushing system utilizes a time-based schedule to flush when water usage is traditionally lower or when the residual level is at its lowest.

TEMPORARY (PORTABLE)

Hydro-Guard HG-6 automatic flushing system takes automatic and programmable flushing capabilities anywhere in the water distribution system where a fire hydrant is available. It's portable and adjustable so it can be connected to the hose nozzle of any brand of fire hydrant. It is the perfect solution for temporary or emergency flushing needs.

PERMANENT

Hydro-Guard permanent flushing systems fully automate the process for flushing water distribution lines. The units can be designed to operate reliably in warm, moderately cold, and cold climates. Designed for use with an integrated multi-event programmer, Hydro-Guard systems can flush a water line multiple times per day, seven days per week, with flush durations ranging from one minute to four hours per program. Water can be discharged atmospherically or direct into a pond or storm sewer.



HG-6



HG-1C



HG-2



HG-8 WARM
CLIMATE



HG-3HG-3



HG-3



HG-8 COLD
CLIMATE

HYDRO-GUARD SAMPLE STATIONS

The Hydro-Guard blow-off sampling station (B.O.S.S.) provides an easy way to take samples of potable water. Using a permanent, dedicated sampling point is the most reliable method of taking a water sample. Hydro-Guard sampling stations are for use in warm to moderate cold climates, with a thermal control valve option for use in regions subject to freezing temperatures. Units are available with a choice of UV-protected impact-resistant plastic or powder-coated steel enclosures that provide both security with their self-locking feature, and installation stability that needs no additional concrete pad or supporting post.



BSS-02 BLOW-OFF
SAMPLING STATION

HYDRO-GUARD

HYDRO-GUARD REMOTE PRESSURE MONITORING SYSTEM

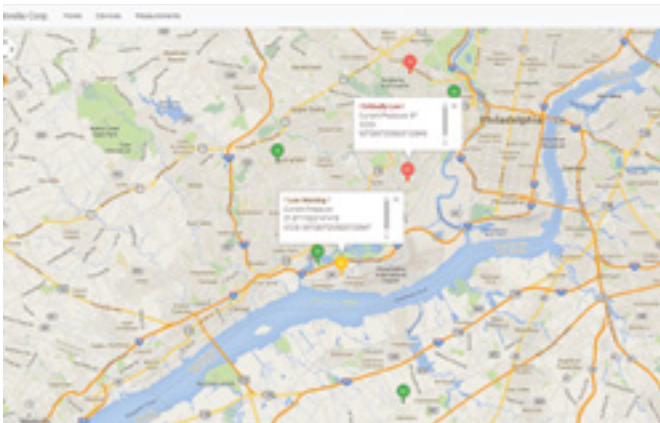
The Remote Pressure Monitoring System from Mueller is a user friendly and cost-effective technology to continuously and remotely monitor pressure at any point within a potable water distribution system. The technology involves threading a sensor onto a corporation valve to transmit pressure readings. The pressure sensor, reports at user-defined intervals via cellular service and a Mueller-hosted secure web server.



COMMUNICATION “BACKBONE” §



TYPICAL INSTALLATION §



MAP INTERFACE



USER ENVIRONMENT

COMPANY HISTORY

1857

Hieronymus Mueller arrives in Decatur, IL and opens a business.

1872

Water/Gas main Tapping Machine patent is issued; threaded Corporation Valves introduced.

1926

First rubber seated Butterfly Valves are introduced.

1969

Mueller 110 compression connection is patented.

1993

Chattanooga, TN and Albertville, AL plants certified ISO 9001.

2002

Hydrant-Defender security device introduced.

2004

Mega-Lite Drilling Machine introduced.

2010

Hersey Meters changed name to Mueller Systems Corporate Headquarters for Mueller is relocated from Decatur, IL to Chattanooga, TN.

2012

Mueller Technology Center opened in Chattanooga, TN.

2014

Mueller acquired Lined Valve Company, adding Knife Gate Valves to its product line.

2017

Mueller acquired Singer Valve Inc.

1900

Patent was issued for Water/Gas main Service Clamp.

1959

O-ring sealed Oriseal Water Valves became available.

1989

Albertville, AL Plant produced 1 millionth Fire Hydrant and declared Hydrant "Capital of the World."

1996

Henry Pratt Company and James Jones Company became Mueller subsidiaries.

2003

Mueller acquired Milliken Valve®.

2006

Mueller Water Products, Inc., the parent company of Mueller became a publicly traded company.

2011

Echologics® advanced leak detection and Hydro-Guard automatic flushing systems became part of Mueller Water Products, Inc.

2013

QR tags added to Fire Hydrants.

2014

Mueller introduces the 350 psi Super Centurion Fire Hydrant and Resilient Wedge Gate Valve. Remote Pressure Monitoring System is introduced.

DELIVERY AND SERVICE

The capacity to deliver the widest array of products and stand behind those products to ensure your satisfaction is our strength. The success of Mueller is dependent upon the success of those who are involved, both inside and outside our company.

Therefore, we feel our future is wholly dependent on long-term relationships with our employees, customers and suppliers. This is why we strive to be proactive and responsive to their needs, always looking for a “better way”. It’s an approach that has set us apart since 1857 and will assure our mutual achievement and prosperity in the future.

Mueller distributors inventory extensive stocks, helping to assure ready availability. Mueller sales representatives, strategically located around the world, are always ready to provide application and installation assistance and help with any special issues.



- Mueller Sales and Customer Service
- ▲ Mueller Operations
- ▲ Affiliate Operations

For more information about Mueller or to view our full line of water products, please visit www.muellerwp.com or call Mueller customer service at 1.800.423.1323.

Mueller refers to one or more of Mueller Water Products, Inc. a Delaware corporation (“MWP”), and its subsidiaries. MWP and each of its subsidiaries are legally separate and independent entities when providing products and services. MWP does not provide products or services to third parties. MWP and each of its subsidiaries are liable only for their own acts and omissions and not those of each other. MWP brands include Mueller®, Echologics®, Hydro Gate®, Hydro-Guard®, Jones®, Krausz®, Mi.Net®, Milliken®, Pratt®, Pratt Industrial®, Singer®, and U.S. Pipe Valve & Hydrant. Please see muellerwp.com/brands to learn more.

© 2020 Mueller Water Products, Inc. All Rights Reserved. The trademarks, logos and service marks displayed in this document are the property of Mueller Water Products, Inc., its affiliates or other third parties. Products above marked with a section symbol (§) are subject to patents or patent applications. For details visit www.mwppat.com.

