

HYDRO-GUARD[®]

a **MUELLER** brand

INSTALLATION INSTRUCTION MANUAL

Remote Pressure Monitoring Value Box and Bracket Installation

TABLE OF CONTENTS	PAGE
Valve Box Installation	2
Bracket Installation	3

VALVE BOX INSTALLATION



Prior To Installation

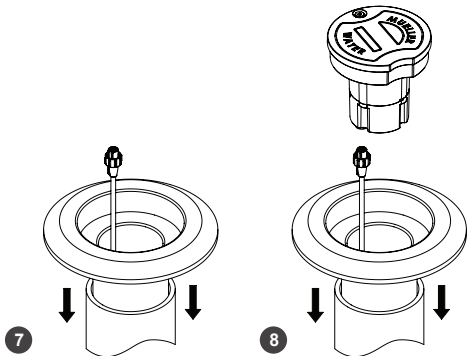
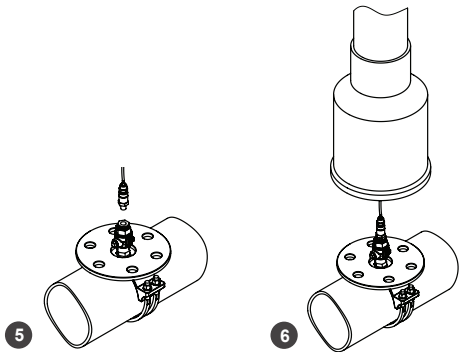
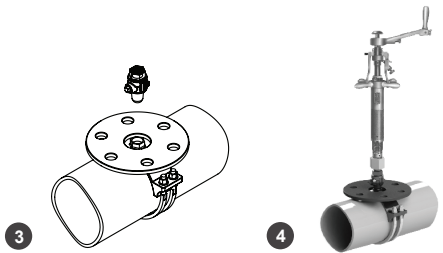
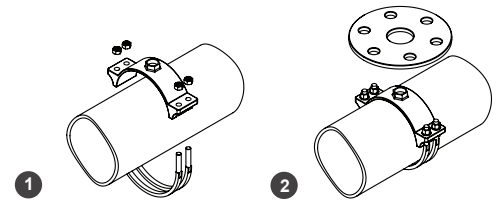
You will need to verify cell coverage at installation site before you begin. Place cell phone of same carrier (Verizon) at the planned installation location, and verify the signal quality. Indicator must have a minimum of two (2) bars.

Installation

1. Install service saddle.
2. Install guide plate.
3. Thread corporation valve into service saddle. Valve should be open.
4. Perform drilling operation.
5. Apply joint sealant, dry the connection inlet before inserting the pressure sensor; and then thread pressure sensor into corporation valve. **Open Valve**
6. Install valve box over the assembly.
7. Carefully back fill and pave area around valve box per direction by engineer of record. Be sure to keep the sensor connector within reach.

⚠ CAUTION: DO NOT PAVE OVER RTU! (Use valve box lid or cast iron blank)

8. Plug sensor cable into Black connector on RTU and hand tighten connector. Insert RTU into adjustable top. Be certain lid of RTU is flush with valve box frame.
9. Record location. Be sure to provide address, GPS coordinates – latitude and longitude (if available), who performed installation and the date of installation.



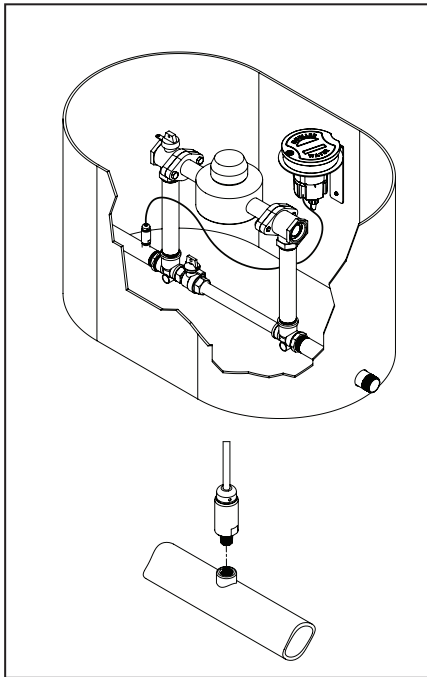
BRACKET INSTALLATION



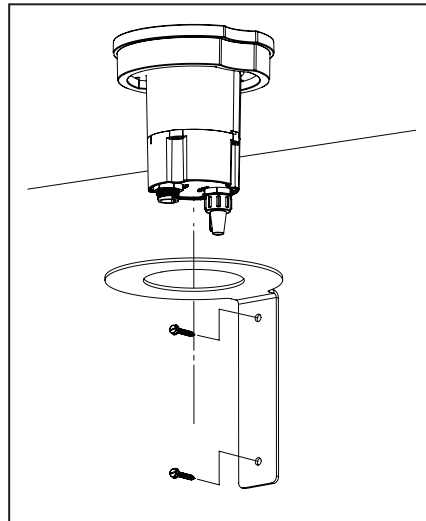
Prior To Installation

You will need to verify cell coverage at installation site before you begin. Place cell phone of same carrier (Verizon) at the planned installation location, and verify the signal quality. Indicator must have a minimum of two (2) bars.

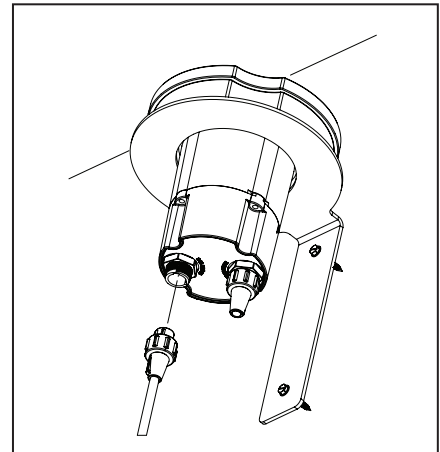
Installation



1. Apply joint sealant and thread pressure sensor into 1/4" NPT port. Turn on the water.



2. Install mounting bracket to wall of meter box/vault.



3. Plug sensor cable into Black connector on RTU and hand tighten connector.

NOTICE: The protective cap installed on the red connector must remain in place when the device is installed to protect the connector from damage.

MUELLER® | ECHOLOGICS® | HYDRO GATE® | HYDRO-GUARD® | HYMAX® | JONES® | KRAUSZ® | MI.NET® | MILLIKEN®
PRATT® | PRATT INDUSTRIAL® | SINGER® | U.S. PIPE VALVE AND HYDRANT

833.367.6835 – www.singervalue.com – moreinfo@singervalue.com

INTERNATIONAL - 1.423.490.9555 - www.mueller-international.com - international@muellercompany.com

Mueller refers to one or more of Mueller Water Products, Inc. a Delaware corporation (“MWP”), and its subsidiaries. MWP and each of its subsidiaries are legally separate and independent entities when providing products and services. MWP does not provide products or services to third parties. MWP and each of its subsidiaries are liable only for their own acts and omissions and not those of each other. MWP brands include Mueller®, Echologics®, Hydro Gate®, Hydro-Guard®, HYMAX®, Jones®, Krausz®, Mi.Net®, Milliken®, Pratt®, Pratt Industrial®, Singer®, and U.S. Pipe Valve & Hydrant. Please see muellerwp.com/brands and krauszusa.com to learn more.



© 2020 Mueller SV, Ltd. All Rights Reserved. The trademarks, logos and service marks displayed in this document are the property of Mueller Water Products, Inc., its affiliates or other third parties. Products marked with a section symbol (§) are subject to patents or patent applications. For details, visit www.mwppat.com. These products are intended for use in potable water applications. Please contact your Mueller Sales or Customer Service Representative concerning any other application(s).