

PRATT®

a MUELLER brand

IBV

Indicating Butterfly Valve

PRODUCT FEATURES

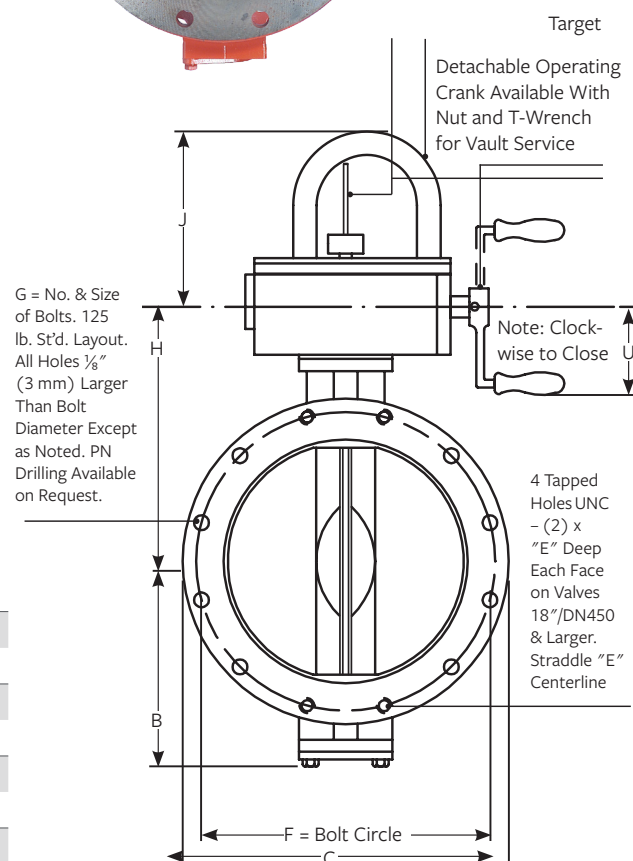
The Pratt® Indicating Butterfly Valve (IBV) is a manually operated rubber seat Butterfly Valve with a high visibility target. The IBV is designed for indoor or vault/chamber service in Fire Protection Systems.

- Flanged IBV size range: 3" – 24"/DN80 – DN600, UL Listed 250psig/17barg.
- 6" – 12"/DN150 - DN300, FM Approved 250psig/17barg; 14" – 16"/DN350 – DN400 175psig/12barg
- Conforms to AWWA C504 standards.
- Tested to UL 1091.
- Equipped with a weather proof Actuator.
- Does not require exercising.

DIMENSIONS - INCHES (MM)

| VALVE SIZE | B | C | E | F |
|------------|-----------|-----------|---------|-----------|
| 3"/DN80 | 3¾ (95) | 7½ (191) | 1⅜ (21) | 6 (152) |
| 4"/DN100 | 4½ (114) | 9 (229) | 1 (25) | 7½ (191) |
| 6"/DN150 | 5½ (140) | 11 (279) | 1⅛ (27) | 9½ (241) |
| 8"/DN200 | 6¾ (171) | 13½ (343) | 1⅜ (30) | 9½ (241) |
| 10"/DN250 | 9⅞ (251) | 16 (406) | 1⅞ (29) | 14¼ (362) |
| 12"/DN300 | 11⅜ (289) | 19 (483) | 1⅝ (33) | 17 (432) |
| 14"/DN350 | 12⅝ (321) | 21 (533) | 1⅞ (36) | 18¾ (476) |
| 16"/DN400 | 14½ (368) | 23½ (597) | 1½ (38) | 21¼ (540) |
| 18"/DN450 | 15¼ (387) | 25 (635) | 1⅝ (41) | 22¾ (578) |
| 20"/DN500 | 17 (432) | 27½ (698) | 1¾ (44) | 25 (635) |
| 24"/DN600 | 18⅝ (473) | 32 (813) | 1⅞ (48) | 29½ (749) |

| VALVE SIZE | #HOLES-ØG | H | J | U | WT-LBS (KG) |
|------------|--------------|-----------|-----------|-----------|-------------|
| 3"/DN80 | 4 – ⅝ (16) | 6⅜ (162) | 7⅜ (187) | 4⅞ (116) | 45 (20) |
| 4"/DN100 | 8 – ⅝ (16) | 7⅝ (190) | 7⅜ (187) | 4⅞ (116) | 90 (41) |
| 6"/DN150 | 8 – ¾ (19) | 8½ (216) | 7⅜ (187) | 4⅞ (116) | 115 (52) |
| 8"/DN200 | 8 – ¾ (19) | 9¾ (248) | 7⅜ (187) | 8⅞ (217) | 150 (68) |
| 10"/DN250 | 12 – ⅞ (22) | 11⅞ (309) | 7⅝ (194) | 8⅞ (217) | 260 (118) |
| 12"/DN300 | 12 – ⅞ (22) | 12⅝ (329) | 7⅝ (194) | 8⅞ (217) | 320 (145) |
| 14"/DN350 | 12 – 1 (25) | 14¾ (375) | 7⅝ (194) | 8⅞ (217) | 405 (184) |
| 16"/DN400 | 16 – 1 (25) | 16⅝ (415) | 9⅞ (251) | 12⅞ (319) | 500 (227) |
| 18"/DN450 | 16 – 1⅞ (29) | 17⅝ (437) | 9⅞ (251) | 12⅞ (319) | 610 (277) |
| 20"/DN500 | 20 – 1⅞ (29) | 19⅝ (494) | 11⅝ (283) | 12⅞ (319) | 850 (295) |
| 24"/DN600 | 20 – 1¼ (32) | 23⅝ (592) | 12⅞ (308) | 12⅞ (319) | 1285 (583) |

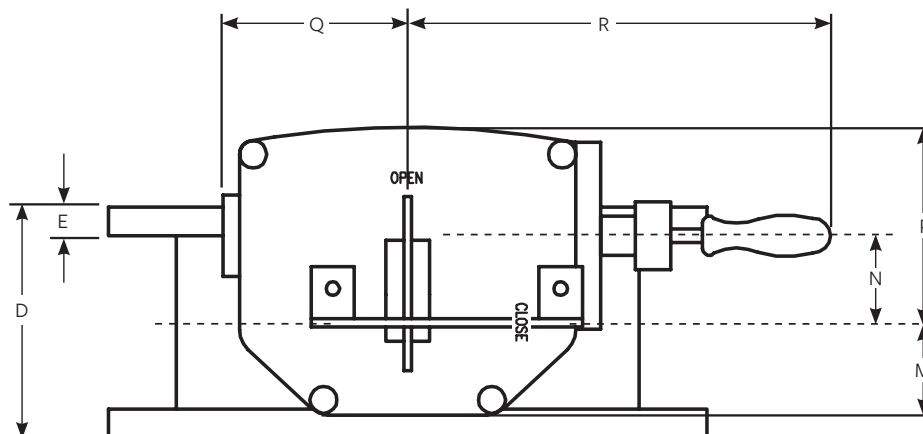


MUELLER

DIMENSIONS - INCHES (MM)

| VALVE SIZE | D | E |
|------------|---------|-------------------------------------|
| 3"/DN80 | 5 (127) | 1 ³ / ₁₆ (21) |
| 4"/DN100 | 5 (127) | 1 (25) |
| 6"/DN150 | 5 (127) | 1 ¹ / ₁₆ (27) |
| 8"/DN200 | 6 (152) | 1 ³ / ₁₆ (30) |
| 10"/DN250 | 8 (203) | 1 ¹ / ₈ (29) |
| 12"/DN300 | 8 (203) | 1 ⁵ / ₁₆ (33) |
| 14"/DN350 | 8 (203) | 1 ⁷ / ₁₆ (36) |
| 16"/DN400 | 8 (203) | 1 ¹ / ₂ (38) |
| 18"/DN450 | 8 (203) | 1 ⁵ / ₈ (41) |
| 20"/DN500 | 8 (203) | 1 ³ / ₄ (44) |
| 24"/DN600 | 8 (203) | 1 ⁷ / ₈ (48) |

Note: Dimensions +/- 1/16" (1.5 mm) up to 10"/DN250 valves, +/- 1/8" (3 mm) for 12"/DN300 and larger valves.



| VALVE SIZE | M | N | P | Q | R |
|-------------------------|-------------------------------------|-------------------------------------|--|---------------------------------------|---------------------------------------|
| 3" - 6"/DN80 - DN200 | 2 ¹ / ₈ (54) | 2 (51) | 4 ¹ / ₂ (114) | 4 ¹ / ₂ (114) | 11 (279) |
| 8"/DN200 | 2 ¹ / ₈ (54) | 2 (51) | 4 ¹ / ₂ (114) | 4 ¹ / ₂ (114) | 13 ⁵ / ₁₆ (339) |
| 10" - 14"/DN250 - DN350 | 3 ¹ / ₄ (83) | 3 ⁵ / ₃₂ (80) | 5 (143) | 5 ³ / ₈ (137) | 15 ⁷ / ₁₆ (392) |
| 16" - 18"/DN400 - DN450 | 3 ³ / ₈ (86) | 4 (102) | 7 ⁵ / ₁₆ (186) | 6 ³ / ₄ (171) | 18 ³ / ₄ (476) |
| 20"/DN500 | 4 ¹ / ₂ (114) | 5 ¹ / ₂ (140) | 8 ³ / ₄ (222) | 10 ¹ / ₈ (257) | 24 (610) |
| 24"/DN600 | 5 ¹ / ₂ (140) | 3 ⁵ / ₈ (92) | 10-1 ¹ / ₂ (265) | 15 ¹ / ₁₆ (405) | 26 ⁷ / ₈ (683) |

MATERIALS OF CONSTRUCTION

| | |
|-------|--|
| Body | Ductile Iron ASTM A536 |
| Disc | Ductile Iron (3" & 4"/DN80 & DN100 CF8M) |
| Seat | EPDM or NBR |
| Shaft | Stainless Steel 17-4 |

FLANGED CONNECTIONS

Pratt IBV valve bodies are available with Flanged connections. Each Valve is tested for five minutes with air pressure against a closed disc covered in a pool of water at the pressure above rated pressure full stop. Mechanical Joint and Wafer style end connections also available, please contact us for details.

For more information about us, or to view our full line of products, please visit www.mueller-international.com or call International Customer Service at:

UK: +44.1438.487410 Dubai: +971.4.214.6640 Singapore: +65.6816.3088 USA: +1.800.423.1323 | International@muellerwp.com

Mueller refers to one or more of Mueller Water Products, Inc., a Delaware corporation ("MWP"), and its subsidiaries. MWP and each of its subsidiaries are legally separate and independent entities when providing products and services. MWP does not provide products or services to third parties. MWP and each of its subsidiaries are liable only for their own acts and omissions and not those of each other. MWP brands include Mueller®, Echologics®, Hydro Gate®, Hydro-Guard®, Jones®, Krausz®, Mi.Net®, Milliken®, Pratt®, Pratt Industrial®, Singer®, and U.S. Pipe Valve & Hydrant. Please see muellerwp.com/brands to learn more.

© 2020 Mueller Water Products, Inc. All Rights Reserved. The trademarks, logos and service marks displayed in this document are the property of Mueller Water Products, Inc., its affiliates or other third parties. Products above marked with a section symbol (§) are subject to patents or patent applications. For details visit www.mwppat.com.

F 12977 3/20

MUELLER