

MUELLER

METER BOXES & VAULTS

Easy Access... Maximum Protection





PVC METER BOXES & VAULTS

Mueller® PVC Meter Boxes protect water meters from damage while providing operations personnel with easy access for fast inspection, reading, and maintenance. The body of the meter box is made from rigid PVC which has a high insulating “R” value that resists “frost bridging” inside the box. For extremely cold climates, an optional insulating pad is available which traps the rising warm air inside the box.

Mueller PVC Meter Boxes are shipped fully assembled, ready for meter installation. Their light weight design saves shipping costs and makes installation a one man job in most cases. Every meter box is factory-tested and features a 150 psig maximum working pressure. Various designs have been developed to fit water meter sizes from 5/8” to 2”, and are available with a wide variety of end connections, control valves, box depths, lids, and other options. Due to the almost endless combination of features available, each box is custom built by Mueller craftsmen to meet your specifications and provide you with the meter box you need.

DESIGN	CLIMATE RANGE	BOX DEPTHS	BOX DIAMETERS	MINIMUM WALL	3.125 HZ	6.25 HZ
Thermal-Coil®	Cold-Moderate	30" - 96"	15" & 18"	0.300"	Flexible Polybutylene	5/8" - 1"
Adjusta-Coil™	Cold-Moderate	36" - 120"	15" & 18"	0.300"	Flexible Polybutylene	5/8" - 1"
EZ-Setter®	Warm-Moderate	10" - 18"	15", 18", & 21"	0.300"	None	5/8" - 1"
Riser EZ-Setter	Warm-Moderate	14" - 26"	18" & 21"	0.300"	Rigid Type K Copper	5/8" - 1"
EZ-Vault®	Cold-Warm	30" - 60"	24", 27", & 36"	0.486"	None	1 1/2" - 2"
Air Release Thermal-Coil	Cold-Moderate	30" - 96"	15" & 18"	0.300"	Flexible Polybutylene	3/4" - 1" Coil
Air Release Rigid	Cold-Moderate	30" - 96"	18"	0.300"	None	2" Coil



THERMAL-COIL



RISER EZ-SETTER



EZ-VAULT (SHOWN WITH BYPASS)

SPECIALTY PVC METER BOXES

ADJUSTA-COIL VAULTS

The Adjusta-Coil meter box is our proven Thermal-Coil design – with a “twist.” The box can be adjusted to compensate for grade changes without adding separate extensions. Simply set this box in place and twist the top section, set the new grade level, then twist again to permanently and securely set the meter box height.

DEPTH RANGES AVAILABLE

- 48” through 120” bury depth (12” total adjustment range in 1” increments)
- 36” through 48” bury depth (6” total adjustment range in 1” increments)
- Other ranges available

FEATURES

- Rigid .30” min. PVC shell that resists ovaling and adds to the insulating feature to resist frost bridging
- White inside for better interior visibility
- Raise meter to ground level for easy access
- Strong but light platform features convenient handgrips, and locks in place when at ground level
- 15” diameter for single or tandem meters, 18” for larger or double meters
- Rugged, yet light weight for easy field handling
- Shipped fully assembled and tested
- Plus all the lid, bottom, inlet/outlet, and insulating pad options of the Thermal-Coil box



PLATFORM IN RAISED POSITION



SHOWN IN EXTENDED POSITION

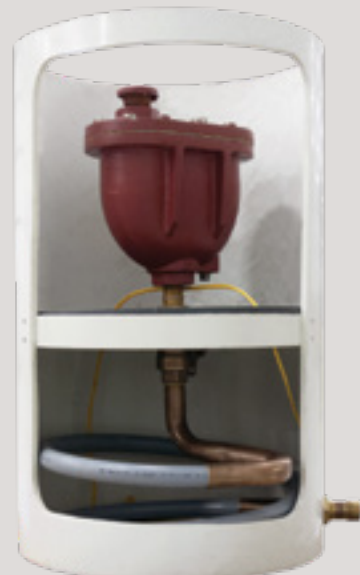
AIR RELEASE VALVE VAULTS

The Mueller Air Release Valve Vault provides a means to quickly install an Air Release Valve*. To make the air release valve more accessible, Mueller provides a steel mounting platform and an inline ball valve that can be controlled from ground level using a built-in key extension rod. The Air Release Valve Vault is available in both 15” and 18” diameter sizes with a wide range of bury depths.

FEATURES

- Mounted on a steel platform for support of the air release valve (2”) or on a platform that can be raised and lowered using Mueller’s Thermal-Coil design ($\frac{3}{4}$ ” & 1” only)
- Threaded connection for ease of installation
- NTP connection for the air release valve*
- Housed in a PVC protective, in-ground housing (ASTM D-224 & D-1794)
- Can be covered using a locking or non-locking lid

* Air release valve supplied by Henry Pratt or others



AIR RELEASE VALVE WITH THERMAL-COIL DESIGN

CAST IRON METER BOXES

LOW-COST SECURITY AND DURABILITY FOR BURIED METERS

Simplify installation and provide protection for buried meters with the Mueller Cast Iron Meter Box. Its compact assembly includes all the parts you need to install $\frac{5}{8}$ " x $\frac{3}{4}$ " water meters, plus a standard locking lid and stabilizing ribs on the upper section (non-locking lid optional).

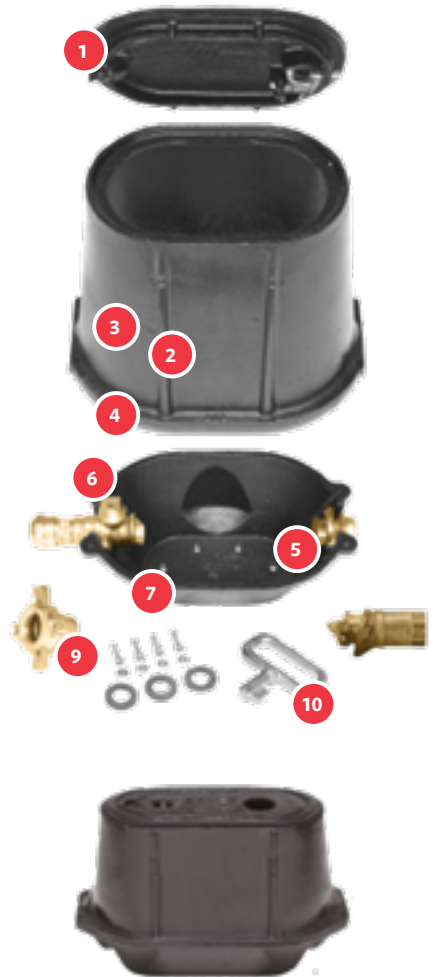
A lip on the box's upper section extends over the edges of the lower section. The two sections can be bolted together, or left unbolted to allow the parts to shift, preventing transfer of loads from the upper section to the meter or service piping. Upper section heights of 7" and 9" are available.

- 1 Locking Lid Standard (Non-Locking Available)
- 2 Stabilizing Ribs for Concrete Installation
- 3 7" or 9" Upper Section
- 4 Upper Section (Boltable) Overlaps Lower
- 5 Meter Support Saddles
- 6 Ball or Inverted Key Meter Valve Inlet
- 7 Available in 60 Degree Angle or Horizontal Mounting
- 8 Available with $\frac{3}{4}$ " F.I.P. Outlet or $\frac{3}{4}$ " F.I.P. Double Check Valve Outlet**
- 9 Expansion Handwheel
- 10 Locking Lid Wrench

** Check valve is pre-assembled to outlet end of regular box. For "stretch" box options, it is packed as a separate piece to be attached to meter before installing meter in box.

ADDITIONAL FEATURES

- Wide selection of inlet connection types for all common service pipe and tubing materials
- For convenience in installation, saddles on inlet valve and outlet connection support the meter while it is tightened in place
- Easy turning brass expansion handwheel
- Standard lid marking is "Water Meter"
- Optional electronic meter reading lid



"STRETCH" BOX OPTION

A longer version of the box, called a "stretch" box, is available to accommodate a water meter with a double check valve inside the box. The "Stretch" Box is offered with a 7" high cast iron upper section. An optional cast iron grade-change ring can add up to 3" to the box height. This box is supplied standard with an ASSE double check valve.

METER BOX ACCESSORIES

LIDS



COMPOSITE METER LID



FLAT METER LID (NO LOCK)



FLAT METER LID WITH READER LID

THERMAL SHELLS, EXTENSIONS, AND INSULATING PADS



THERMAL SHELLS



BOX EXTENSIONS



INSULATING PAD

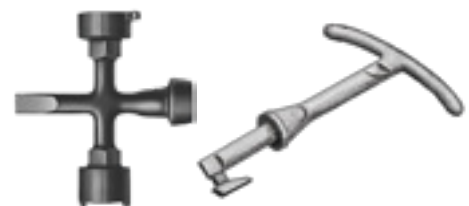
LID FRAMES, KEYS, AND COVERS



TRANSITION RING & FRAME



CAST IRON COVERS



LID KEYS

OUR PRODUCTS

Mueller has built its reputation on producing innovative water distribution products of superior quality – a reputation that is literally “on the line” every day throughout the world. Mueller products and those of its affiliates are used throughout the water system... from the source to the consumer. And we are committed to continuing research and development of new products and services to meet the growing needs of the water infrastructure industry. Mueller is the largest and only full-line supplier of potable water distribution products in North America and its markets continue to expand globally.

OUR PEOPLE

The capacity to deliver the widest array of products and stand behind those products to ensure your satisfaction is our strength. The success of Mueller is dependent upon the success of those who are involved, both inside and outside our company. Therefore, we feel our future is wholly dependent on long-term relationships with our employees, customers and suppliers. This is why we strive to be proactive and responsive to their needs, always looking for a “better way”. It’s an approach that has set us apart since 1857 and will assure our mutual achievement and prosperity in the future.

OTHER INNOVATIVE MUELLER PRODUCTS



HYDRO-GUARD® HG-8 AUTOMATIC FLUSHING SYSTEM

- Permanent, programmable flushing system for water distribution lines
- Helps utilities maintain more consistency in the level of chlorine residual, especially at dead ends
- Uses the field-proven design of the Mueller Thermal-Coil meter box
- Adjustable platform can be raised to the surface easily, then lowered for normal service
- Internal components operate below the frost line for protection against freezing temperatures
- Composite lid at ground level disguises unit and provides easy access

For more information about Mueller or to view our full line of water products, please visit www.muellerwp.com or call Mueller customer service at 1.800.423.1323.

Mueller refers to one or more of Mueller Water Products, Inc. a Delaware corporation (“MWP”), and its subsidiaries. MWP and each of its subsidiaries are legally separate and independent entities when providing products and services. MWP does not provide products or services to third parties. MWP and each of its subsidiaries are liable only for their own acts and omissions and not those of each other. MWP brands include Mueller®, Echologics®, Hydro Gate®, Hydro-Guard®, Jones®, Krausz®, Mi.Net®, Milliken®, Pratt®, Pratt Industrial®, Singer®, and U.S. Pipe Valve & Hydrant. Please see muellerwp.com/brands to learn more.

© 2020 Mueller Water Products, Inc. All Rights Reserved. The trademarks, logos and service marks displayed in this document are the property of Mueller Water Products, Inc., its affiliates or other third parties. Products above marked with a section symbol (§) are subject to patents or patent applications. For details visit www.mwppat.com.